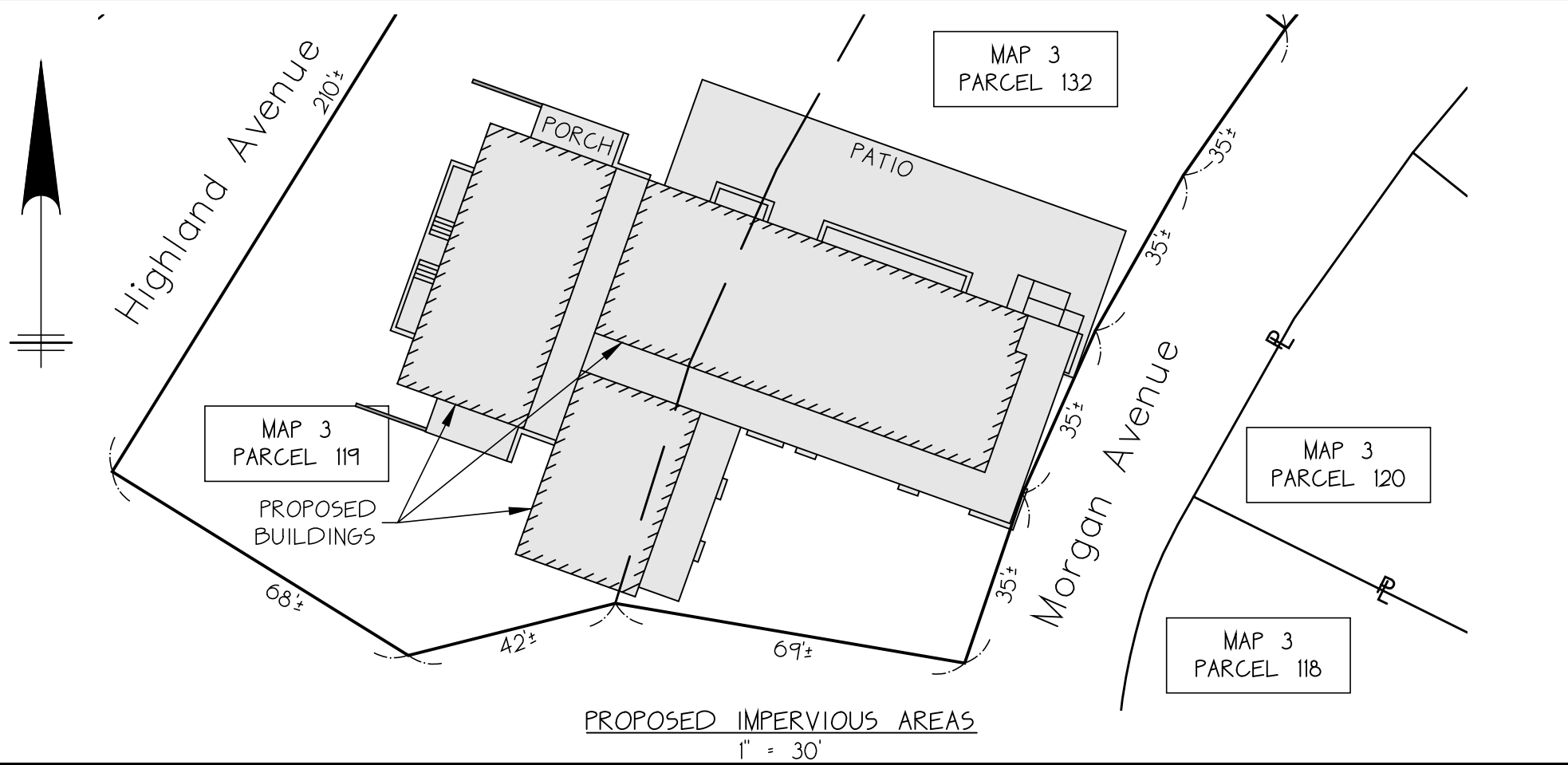


	IMPERVIOUS AREAS	PERCENTAGE
EXISTING	4,409± S.F.	15.9%
PROPOSED	8,997± S.F.	32.5%

APPROXIMATE LOT AREA:
ASSESSOR PARCELS 3-119 AND 3-132= 27,656± SQ. FT.



*Existing & Proposed Impervious Areas Sketch
in
Oak Bluffs, Massachusetts
Assessor Parcels 3-119 & 3-132
prepared for
Eric P. Van Allen
Scale 1"=20' September 20, 2021
Revision Date October 13, 2021*



*P.O. Box 4458
107 Beach Road, Suite 202
Vineyard Haven, MA 02568
Phone (508) 693-9933 Fax (508) 693-4933*