

Oak Bluffs Water District Proposed Solar Basemap

Trails
Special Designation

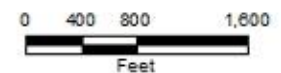
- Trail - Existing
- Trail - Planned
- Ancient Way
- Special Way
- Ancient and Special Way
- Connector Road
- Basement
- Fire Trail

Oak Bluffs (pub. 2014)
POLY_TYPE

- Parcel
- Road/Right of Way
- Water

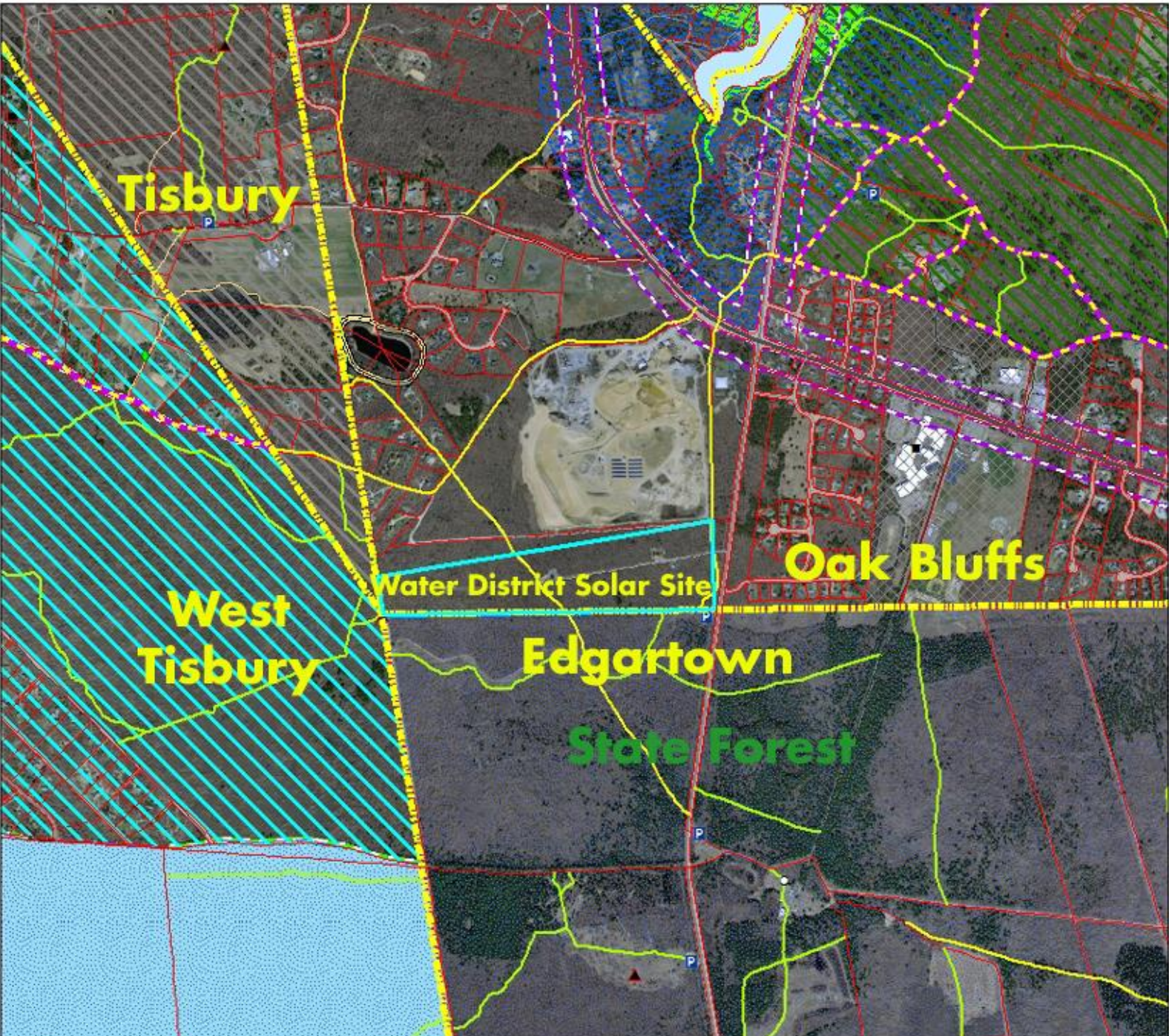
Oak Bluffs Overlay Zoning
DESCRIBE

- Coastal District
- Capeland Plan District
- Floodplain District (Final dFIRM 2010)
- Island Roads District - Major Roads Zone
- Island Roads District - Special Ways Zone
- Lagoon Pond District
- Oak Bluffs Harbor District
- Sengelkotadket Pond District
- Southern Woodlands District
- Special Places District
- Wireless Communication District



Disclaimer: This map is for planning purposes only. The data is not adequate for boundary determination or location information. The user bears sole responsibility for any use of this data as it is not intended to be used for any purpose other than that for which it was prepared by the author.

Created by Paul Pika
Date: December 21, 2012
File Name: Oak Bluffs Solar Basemap
Data Source:
Coordinate System: Oregon State Plane North, NAD83, meters



Oak Bluffs Water District Proposed Solar Basemap

PWSO EP_PT_WithoutWPA_400ft

Trails

Special Designation

- Trail - Existing
- Trail - Planned
- Ancient Way
- Special Way
- Ancient and Special Way
- Connector Road
- Basement
- Fire Trail

Oak Bluffs (pub. 2014)

POLY_TYPE

- Parcel
- Road/Right of Way
- Water

Oak Bluffs Overlay Zoning

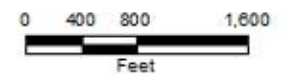
DESCRIBE

- Coastal District
- Copeland Plan District
- Floodplain District (Final dPRR 2010)
- Island Roads District - Major Roads Zone
- Island Roads District - Special Ways Zone
- Lagoon Pond District
- Oak Bluffs Harbor District
- Sengelstadter Pond District
- Southern Woodlands District
- Special Places District
- Wireless Communication District
- State listed Rare Species

Proposed Solar Farm

State Forest

Gravel Pit

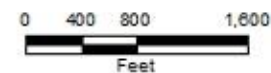
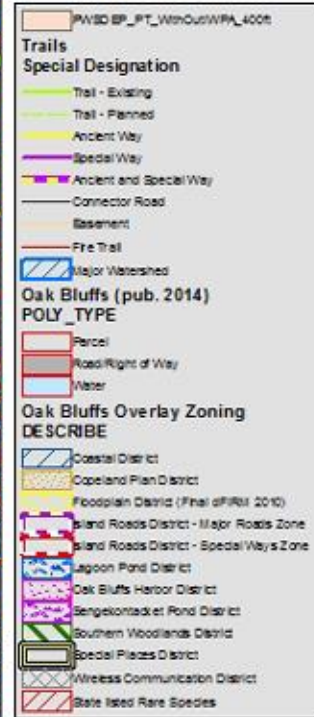


Disclaimer: This map is for planning purposes only. The data is not suitable for boundary determination or property transaction. The copyright of this is not the District's for the data displayed on this map by the user.

Created by Paul Cole,
GIS Developer, GIS
City of Oak Bluffs, 2014
Oak Bluffs
Coordinates: datum: Geoplot, spheroid: NAD83, units: meters

Lagoon Pond Watershed

Oak Bluffs Water District Proposed Solar Basemap



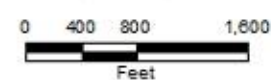
Disclaimer: This map is for planning purposes only. The data are not suitable for boundary determination or property transaction. The compiler of this is not responsible for any errors that may be made in the use of this data.

Created by Paul Dale,
GIS Developer, City of
Oak Bluffs, 10/11/2011
Coordinate System: GCS:North America NAD83, meters

Zone 2 Area of Contribution

Oak Bluffs Water District Proposed Solar Basemap

	ZONES_POLY_DISSOLVE
	PWSD_EP_PT_WithoutWPA_400ft
Trails	
Special Designation	
	Trail - Existing
	Trail - Planned
	Ancient Way
	Special Way
	Ancient and Special Way
	Connector Road
	Basement
	Fire Trail
Oak Bluffs (pub. 2014)	
POLY_TYPE	
	Parcel
	Road/Right of Way
	Water
Oak Bluffs Overlay Zoning	
DESCRIBE	
	Coastal District
	Copeland Plan District
	Floodplain District (Final dPRM 2010)
	Island Roads District - Major Roads Zone
	Island Roads District - Special Ways Zone
	Lagoon Pond District
	Oak Bluffs Harbor District
	Sengekontacket Pond District
	Southern Woodlands District
	Special Places District
	Wireless Communication District
	State listed Rare Species



Disclaimer: This map is for planning purposes only. The data is not adequate for boundary determination or acquisition transaction. The copyright is reserved by the user.

Created by Paul Pika
 Date: December 21, 2012
 File Name: Solar_Site_Base
 Data Source:
 Coordinate System: Oregon State Plane North, NAD83, meters

Oak Bluffs Water District Proposed Solar Basemap

PWSD EP_PT_WithoutWPA_4008

Trails
Special Designation

- Trail - Existing
- Trail - Planned
- Ancient Way
- Special Way
- Ancient and Special Way
- Connector Road
- Basement
- Fire Trail

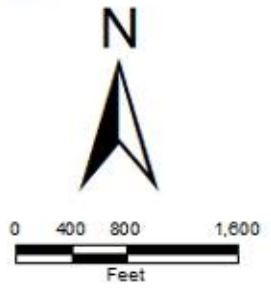
Oak Bluffs (pub. 2014)
POLY_TYPE

- Parcel
- Road/Right of Way
- Water

Oak Bluffs Overlay Zoning
DESCRIBE

- Coastal District
- Copeland Plan District
- Floodplain District (Final of RR# 2010)
- Island Roads District - Major Roads Zone
- Island Roads District - Special Ways Zone
- Lagoon Pond District
- Oak Bluffs Harbor District
- Sengekontacket Pond District
- Southern Woodlands District
- Special Places District
- Wireless Communication District
- State listed Rare Species

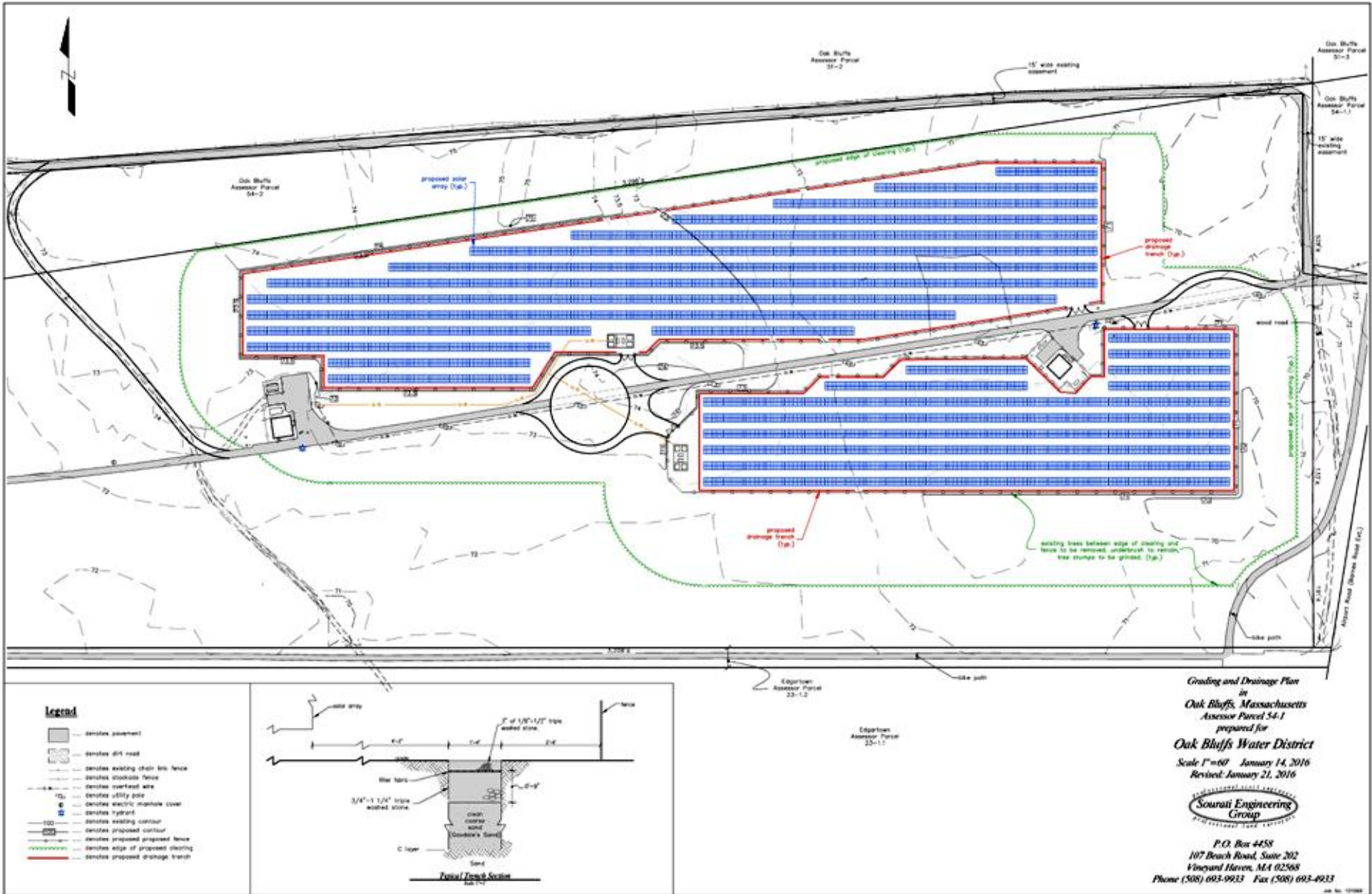
Green Areas Mapped as
Protected Open Space



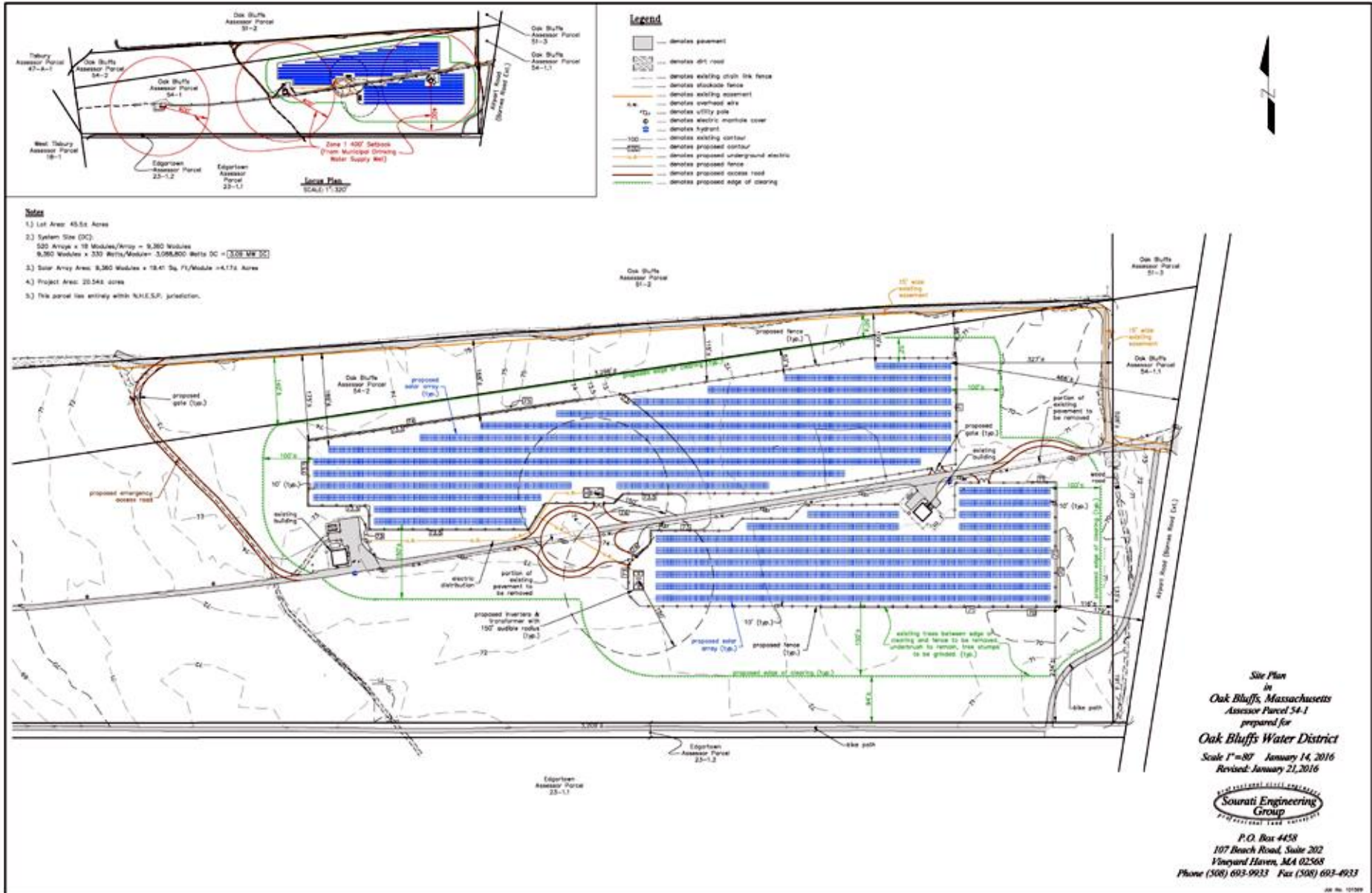
Disclaimer: This map is for planning purposes only. The data is not adequate for boundary determination or location information. The copyright is for all rights reserved. These data are used or interpreted by the user.

Created by Paul Pika
Date: December 21, 2012
File Name: OWS Solar Basemap
Data Source:
Coordinate System: StatePlane Massachusetts NAD83, meters

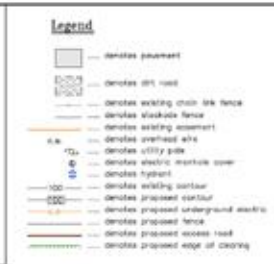
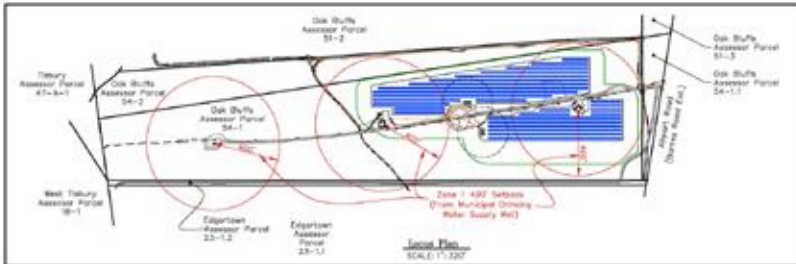
O.B. Water District Solar Farm Grading & Drainage Plan (Rev 1/25)



O.B. Water District Solar Farm Site Plan (Revised 1/25/16)



20.5 acres to be cleared



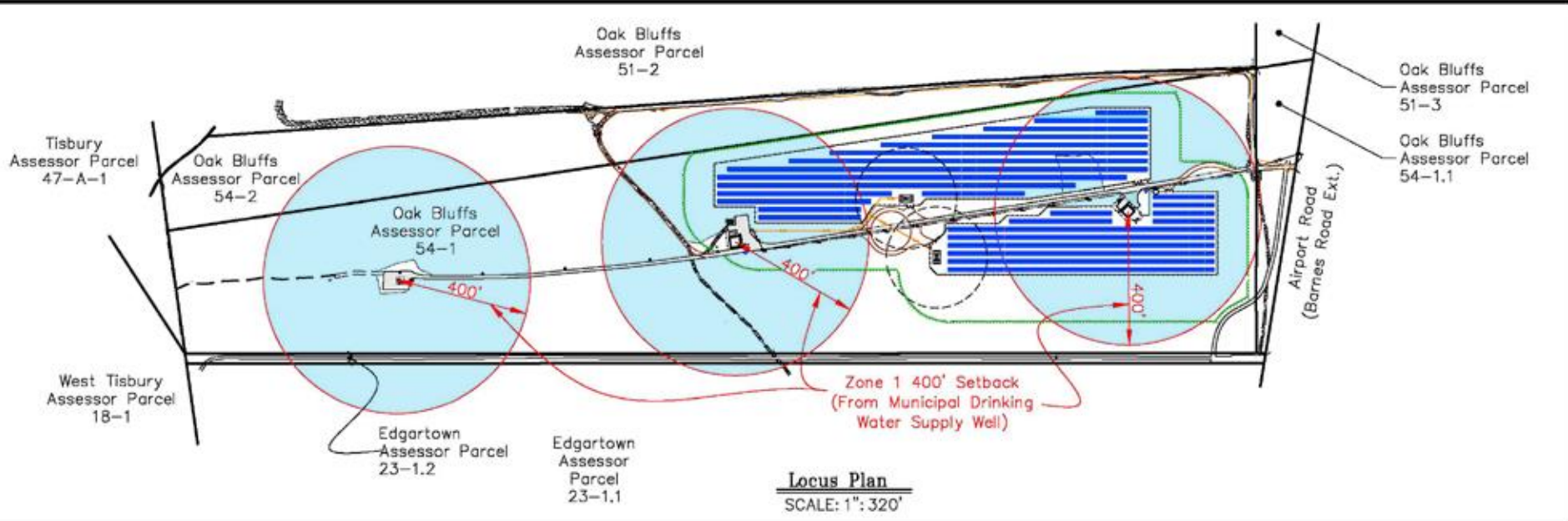
- Notes**
- 1.) Lot Area: 40.50 Acres
 - 2.) System Site (SC)
 - 520' Bridge x 10' Modules/Array = 8,300 Modules
 - 8,300 Modules x 330 Watts/Module = 2,086,500 Watts DC = **3,026 MW DC**
 - 3.) Solar Array Area: 8,300 Modules x 10.81 Sq Ft/Module = 8,974 Area
 - 4.) Project Area: 20.545 acres
 - 5.) The parcel has entry with N.E.E.P. jurisdiction.



Site Plan
 in
 Oak Bluffs, Massachusetts
 Assessor Parcel 54-1
 prepared for
 Oak Bluffs Water District
 Scale 1"=80' January 14, 2016
 Revised: January 21, 2016

Sourati Engineering Group
 P.O. Box 4458
 197 Beach Road, Suite 202
 Vineyard Haven, MA 02568
 Phone (508) 693-9933 Fax (508) 693-4933

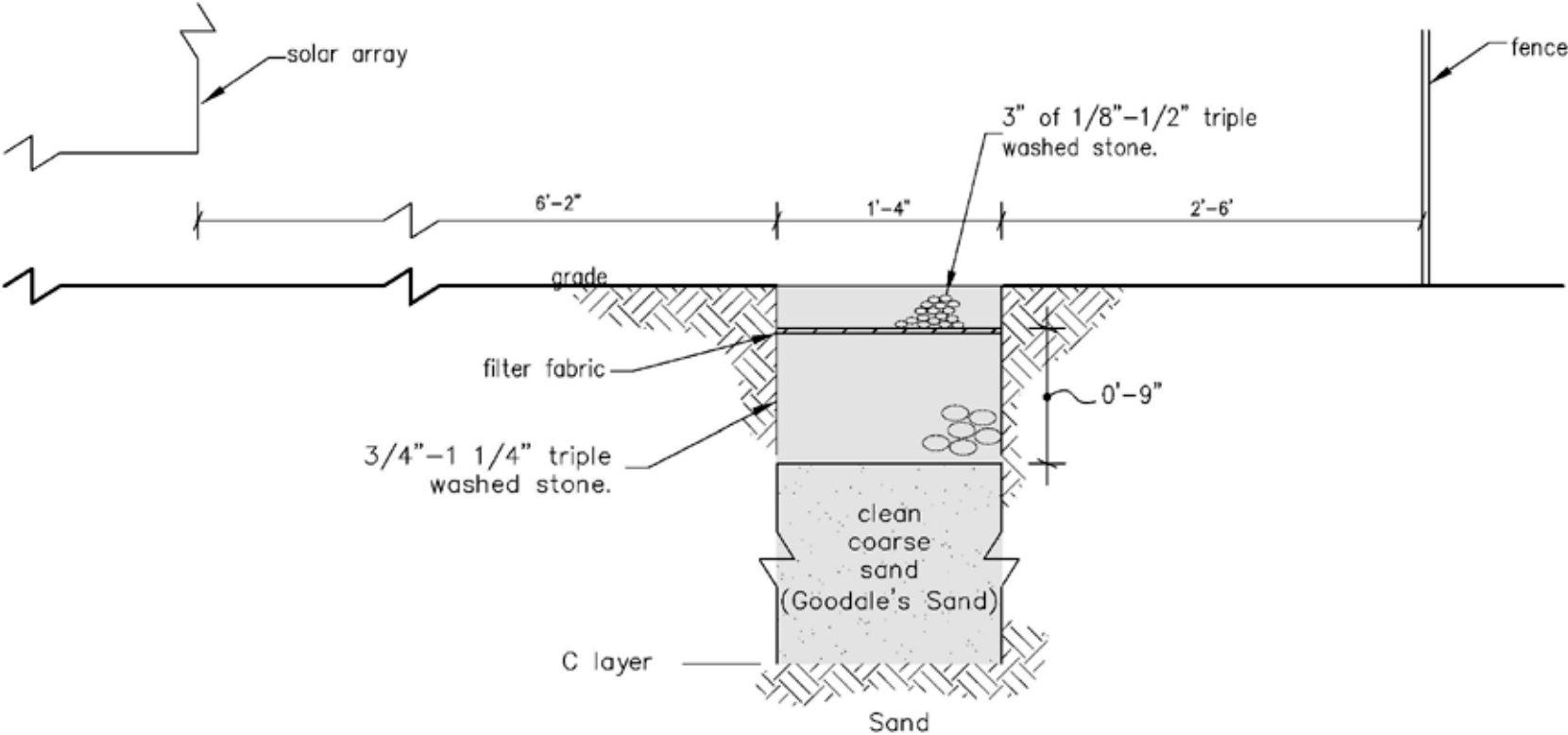
Zone 1 Areas of Contribution Wellhead Protection Areas



Notes

- 1.) Lot Area: 45.5± Acres
- 2.) System Size (DC):
 $520 \text{ Arrays} \times 18 \text{ Modules/Array} = 9,360 \text{ Modules}$
 $9,360 \text{ Modules} \times 330 \text{ Watts/Module} = 3,088,800 \text{ Watts DC} = \boxed{3.09 \text{ MW DC}}$
- 3.) Solar Array Area: $9,360 \text{ Modules} \times 19.41 \text{ Sq. Ft./Module} = 4.17\pm \text{ Acres}$
- 4.) Project Area: 20.54± acres
- 5.) This parcel lies entirely within N.H.E.S.P. jurisdiction.

Trench Detail



Typical Trench Section

Scale: 1"=1'

Oak Bluffs Water District Proposed Solar Basemap

Trails
Special Designation

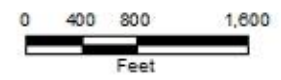
- Trail - Existing
- Trail - Planned
- Ancient Way
- Special Way
- Ancient and Special Way
- Connector Road
- Basement
- Fire Trail

Oak Bluffs (pub. 2014)
POLY_TYPE

- Parcel
- Road/Right of Way
- Water

Oak Bluffs Overlay Zoning
DESCRIBE

- Coastal District
- Coastal Plan District
- Floodplain District (Final dFIRM 2010)
- Island Roads District - Major Roads Zone
- Island Roads District - Special Ways Zone
- Lagoon Pond District
- Oak Bluffs Harbor District
- Sengekontasket Pond District
- Southern Woodlands District
- Special Places District
- Wireless Communication District



Disclaimer: This map is for planning purposes only. The data is not adequate for boundary determination or location information. The user shall verify all data for their use. These data are used as they are read by the user.

Created by Paul Pika
 Date: December 21, 2012
 File Name: Solar Basemap
 Data Source:
 Coordinate System: Oregon State Plane North, NAD83, meters

