

Horsley Witten Group

Sustainable Environmental Solutions

One Turks Head Place, Suite 300 • Providence, RI 02903
401-272-1717 • horsleywitten.com



May 11, 2023

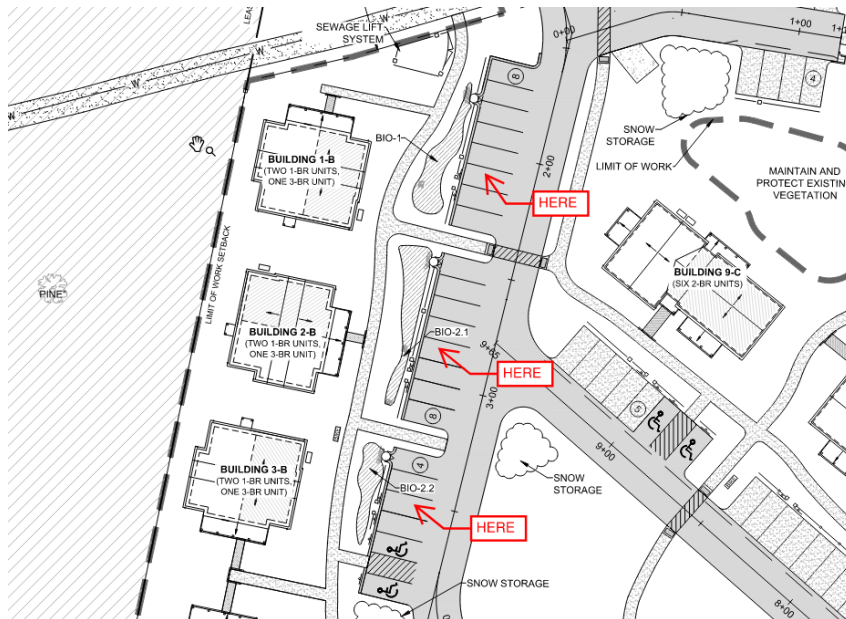
VIA EMAIL

Craig Nicholson
Affirmative Investments, Inc.
33 Union Street – 2nd Floor
Boston, MA 02108

Re: Paved parking spaces.

Dear Craig:

Because of long-term maintenance concerns with the Rain Guardian pretreatment devices for Bioretention areas 1, 2.1, and 2.2, twenty parking spaces will be a paved surface, as shown below. The change in the finished surface has no negative impacts with the proposed stormwater design and calculations because the design assumes that 100% of the parking spaces and roadways are impervious.



Sincerely,

Horsley Witten Group, Inc.

Jason Kroll

Jason Kroll
Project Engineer