

Job Name:

Schedule Reference:

Date:

OUTDOOR VRF SYSTEM FEATURES

- Innovative flash technology enables tremendous heating capacity at lower outdoor temperatures
- Modular design; two small capacity units can be piped together to form a large capacity system
- Compact size
- Inverter-driven (variable speed) scroll compressor
- Reduced defrost time



PUHY-HP96TJMU-A (-BS) PUHY-HP96TJMU-A (-BS)

UNIT OPTION

- Standard Model.....PUHY-HP192TSJMU-A
- Sea Coast (BS) Model.....PUHY-HP192TSJMU-A-BS

OPTIONAL PARTS

- Twinning Kit (required)..... CMY-Y100CBK3
- Joint Kit.....for details see Pipe Accesories Submittal
- Header Kit.....for details see Pipe Accesories Submittal

Specifications		System	Module 1	Module 2
Unit Type		PUHY-HP192TSJMU-A-BS	PUHY-HP96TJMU-A (-BS)	PUHY-HP96TJMU-A (-BS)
Nominal Cooling Capacity (208/230V)	Btu/h	192,000	96,000	96,000
Nominal Heating Capacity (208/230V)	Btu/h	216,000	108,000	108,000
Operating Temperature Range *1	Cooling (Outdoor)	Refer to Module Data	23° ~ 109° F (-5° ~ +43° C) DB	
	Heating (Outdoor)		-13° ~ +60° F (-25° ~ +15.5° C) WB	
External Dimensions (H x W x D)	In. / mm	Refer to Module Data	65 x 48-1/16 x 29-15/16 / 1,650 x 1,220 x 760	65 x 48-1/16 x 29-15/16 / 1,650 x 1,220 x 760
Net Weight	Lbs. / kg	1170 / 530	585 / 265	585 / 265
External finish		Refer to Module Data	Pre-coated Galvanized-steel Sheets with thermostat polyester-resin	
Electrical Power Requirements	Voltage, Phase, Hertz	Refer to Module Data**	208 / 230V, 3-phase, 60Hz**	
Minimum Circuit Ampacity (MCA)**	A	Refer to Module Data**	74 / 68**	74 / 68**
Maximum Fuse Size**	A	Refer to Module Data**	120 / 110**	120 / 110
Piping Diameter			Refer to System Data	
From Twinning Kit to Indoor Units (Braze) (In. / mm)	Liquid (High Pressure)	5/8 / 15.88		
	Gas (Low Pressure)	1-1/8 / 28.58		
From Modules to Twinning Kit (Braze) (In. / mm)	Liquid (High Pressure)	Refer to Module Data	1/2 / 12.7	1/2 / 12.7
	Gas (Low Pressure)	Refer to Module Data	7/8 / 22.2	7/8 / 22.2
Indoor Unit	Total Capacity	50 to 130% of ODUs	Refer to System Data	
	Model / Quantity	P06 ~ P96 / 1 to 41		
Sound Pressure Levels	dB(A)	60.0	57.0	57.0
Fan			Refer to System Data	
Type x Quantity		Refer to Module Data	Propeller Fan x 1	Propeller Fan x 1
Airflow Rate	CFM		7,950	7,950
Compressor Operating Range		Cooling: 12% to 100%; Heating: 6% to 100%	Refer to System Data	
Compressor Type x Quantity		Refer to Module Data	Inverter-driven Scroll Hermetic x 1	Inverter-driven Scroll Hermetic x 1
Compressor Motor Output	kW		6.7	6.7
Compressor Crankcase Heater	kW		0.045	0.045
Refrigerant		Refer to Module Data	R410A	
Lubricant			MEL32	
High-pressure Protection Device		Refer to Module Data	601 psi / 4.15 MPa	601 psi / 4.15 MPa
Compressor / Fan Protection Device			Overheat Protection / Thermal Switch	Overheat Protection / Thermal Switch
Inverter Protection Device			Overheat / Overcurrent Protection	Overheat / Overcurrent Protection

Blue Fin Anti-corrosion Protection: Cellulose- and polyurethane-resin coating treatment applied to condenser coil that protects it from air contaminants; ≥1µm thick; Salt Spray Test Method - no unusual rust development to 960 hours.

NOTES:

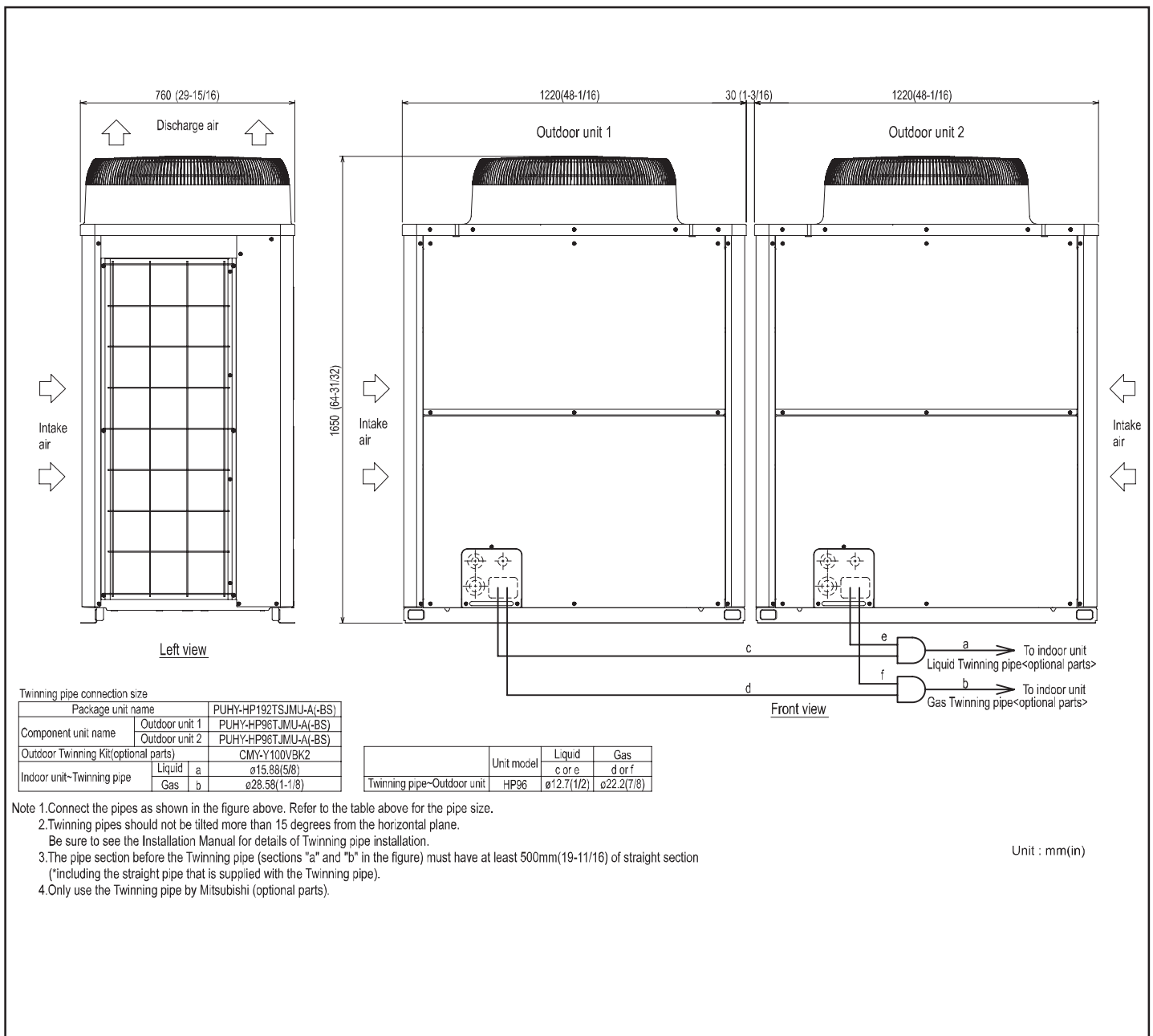
*1. Harsh weather environments may demand performance enhancing equipment. Ask your Mitsubishi Electric representative for more details about your region.

** Each individual module requires a separate electrical connection. Reference electrical data for each individual module.

SEACOAST PROTECTION

- External Panel Base, External Front Panel, Pillar: Alloyed galvanized-steel sheets with thermoset polyester-resin coating on internal and external surfaces
- Compressor Cover: Galvanized-aluminum sheets with thermoset polyester-resin coating on internal and external surfaces
- Electrical Parts Box: Galvanized-aluminum sheets with thermoset polyester-resin coating on external surface
- Fan Motor Support: Galvanized-steel sheets with thermoset polyester-resin coating on internal and external surfaces
- Printed Circuit Board: Epoxy resin with polyurethane-coating on external surface

Outdoor Unit: PUHY-HP192TSJMU-A (-BS) – DIMENSIONS

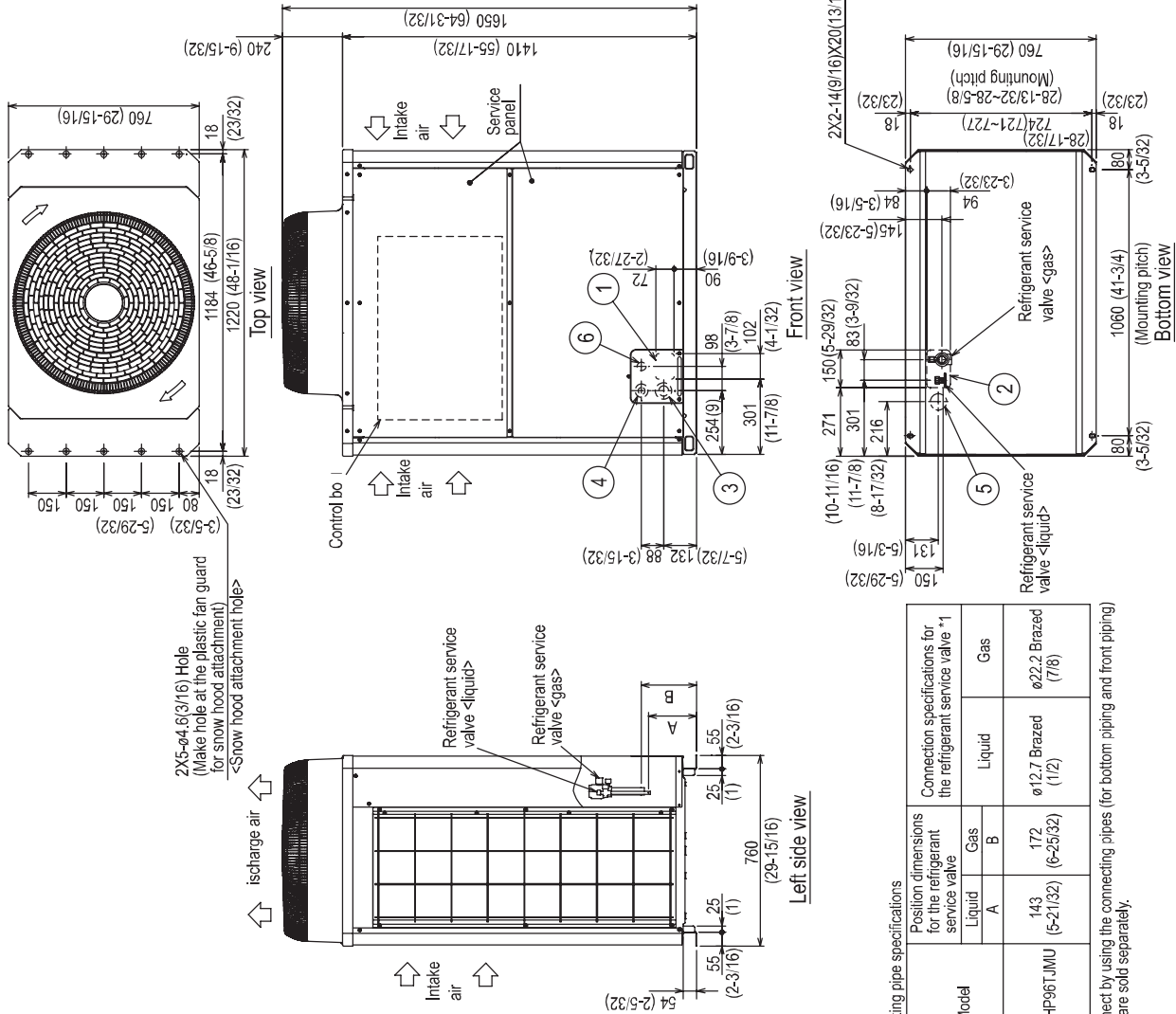


Modules 1 and 2: PUHY-HP96TJMU-A (-BS) – DIMENSIONS

Unit □ mm(in)

Note 1. Please refer to the engineering manual for information regarding necessary spacing around the unit and foundation work. Outdoor unit must be mounted at least 12" off the ground or 12" above the highest average snow depth, whichever is greater.
 2. At brazing of pipes, wrap the refrigerant service valve with wet cloth and keep the temperature of refrigerant service valve under 120°C(248°F).

NO.	Usage	Specifications
①	Front through hole	102 X 72 Knockout hole (4-1/32) (2-27/32)
②	Bottom through hole	150 X 94 Knockout hole (5-29/32) (3-23/32)
③	Front through hole	ø22.7 or ø34.5 Knockout hole (2-15/32) (1-3/8)
④	Front through hole	ø43.7 or ø22.2 Knockout hole (1-3/4) (7/8)
⑤	Bottom through hole	ø65 Knockout hole (2-9/16)
⑥	Front through hole	ø34 Knockout hole (1-11/32)



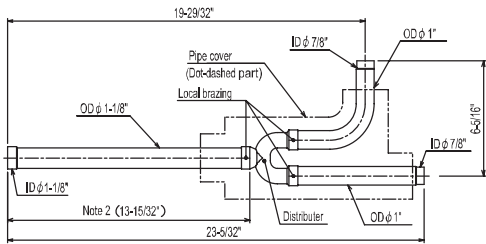
Model	Position dimensions for the refrigerant service valve		Connection specifications for the refrigerant service valve *1		
	Liquid A	Gas B	Liquid	Gas	
PUHY-HP96TJMU	143 (5-21/32)	172 (6-25/32)	ø12.7 Brazed (1/2)	ø22.2 Brazed (7/8)	

*1 Connect by using the connecting pipes (for bottom piping and front piping) that are sold separately.

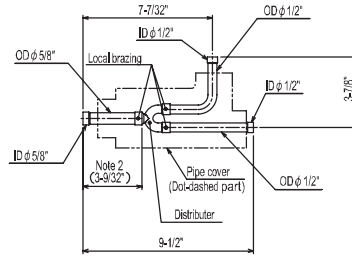
Twining Kit: CMY-Y100CBK3

CMY-Y100CBK3

For Gas pipe:

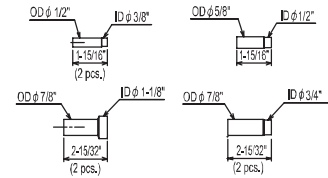


For Liquid pipe:



Ref.: CMY_Y100VBK2_EXD_EUDB_SI in.

<Reducer(Accessory)>



ID: Inner Diameter OD: Outer Diameter

Notes:



Intertek



1340 Satellite Boulevard
Suwanee, GA 30024
Toll Free: 800-433-4822
www.mehvac.com

FORM# PUHY-HP192TSJMU-A (-BS) - 201407

Specifications are subject to change without notice.
© 2014 Mitsubishi Electric US, Inc.