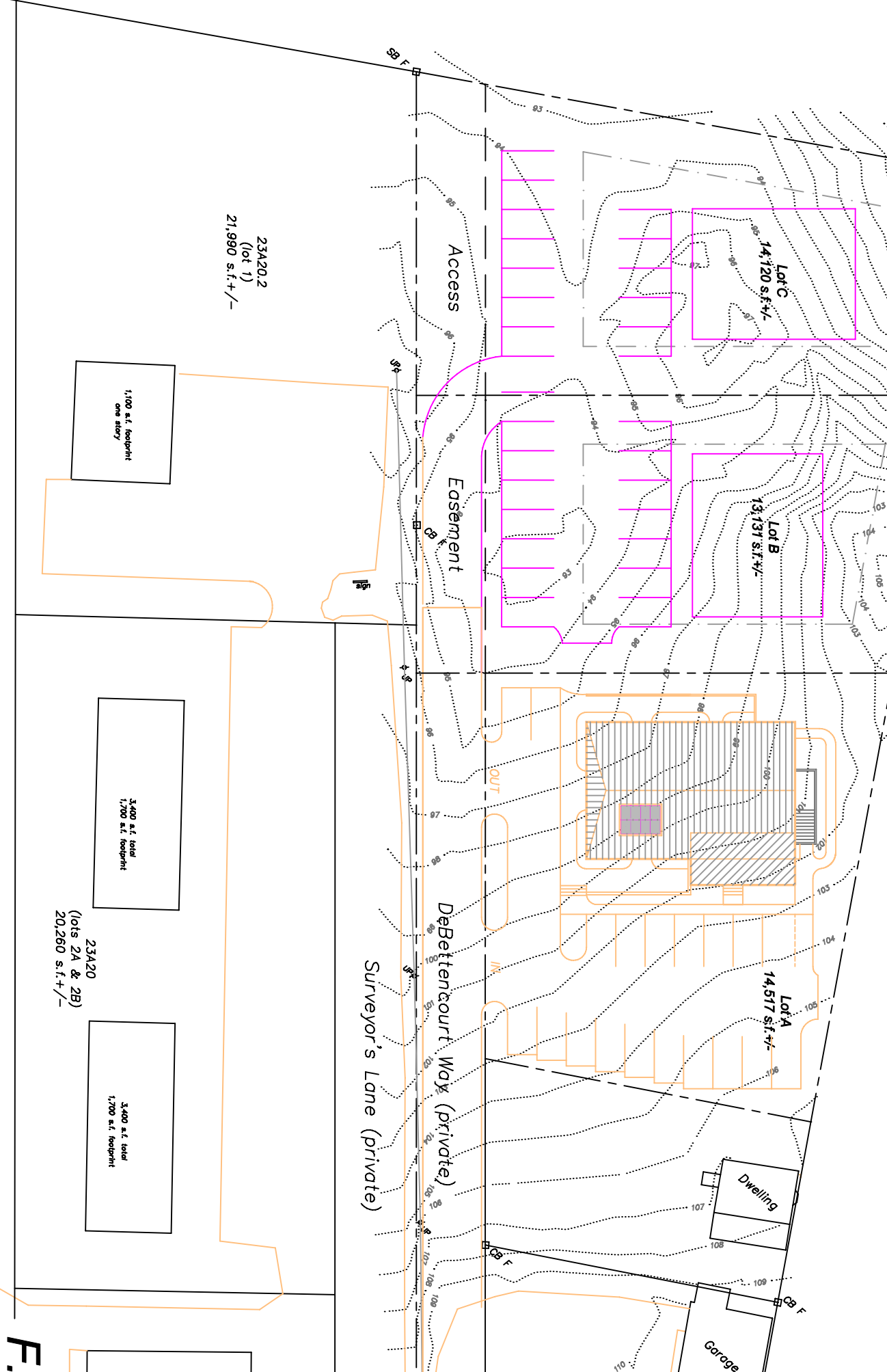


Preliminary Master Plan

Site Plan
Tisbury, Mass.
Scale: 1" = 20' March 9, 2008
Schofield, Barbini & Hoehn Inc.
State Road, Vineyard Haven, Mass.
MV 10290



23A20.2
(lot 1)
21,990 s.f. +/-

1,100 s.f. footprint
one story

3,400 s.f. total
1,700 s.f. footprint

23A20
(lots 2A & 2B)
20,260 s.f. +/-

3,400 s.f. total
1,700 s.f. footprint

F.