

**Beach Road Queue Length (Oak Bluffs to Vineyard Haven)**  
**2013 Summary of Observations**

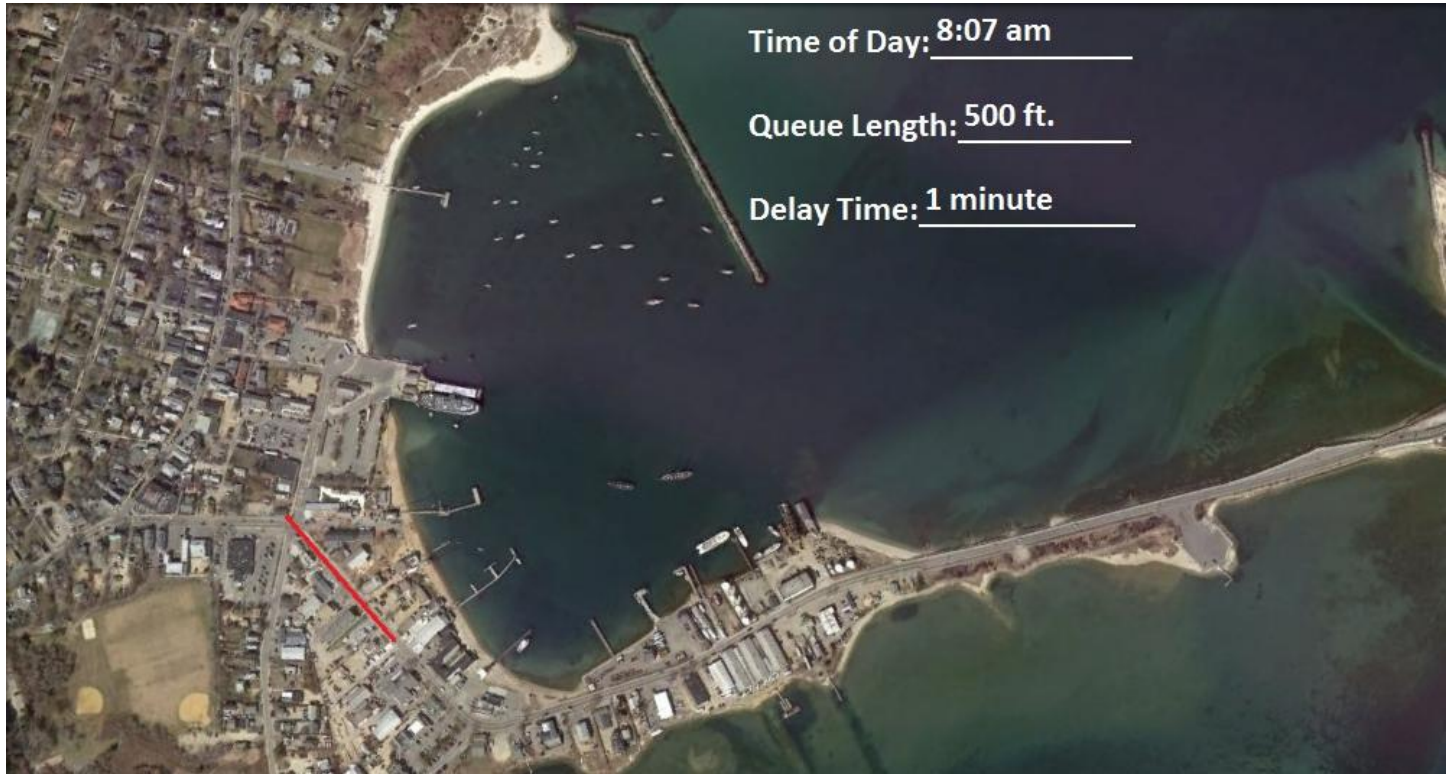
Day	Date	Weather	Time of Day	Distance (feet)	Travel Time (minutes)
Wed	<b>17-Jul-13</b>	Sunny	8:07 AM	500 ft.	1 minutes
			9:13 AM	870 ft.	3 minutes
			2:10 PM	870 ft.	3 minutes
			<b>3:28 PM</b>	<b>5,100 ft.</b>	<b>11 minutes</b>
			4:52 PM	3,600 ft.	8 minutes
Thu	<b>18-Jul-13</b>	Sunny	9:10 AM	350 ft.	2 minutes
			10:40 AM	1,100 ft.	4 minutes
			2:10 AM	760 ft.	2 minutes
			2:25 PM	1,200 ft.	5 minutes
			<b>4:44 PM</b>	<b>2,500 ft.</b>	<b>11 minutes</b>
			5:08 PM	4,200 ft.	8 minutes
Fri	<b>19-Jul-13</b>	Sunny	<b>11:52 AM</b>	<b>2,300 ft.</b>	<b>9 minutes</b>
			12:35 PM	1,400 ft.	4 minutes
			1:22 PM	3,300 ft.	6 minutes
			4:11 PM	1,150 ft.	3 minutes
Sat	<b>20-Jul-13</b>	Sunny	10:37 AM	1,650 ft.	5 minutes
			<b>11:58 AM</b>	<b>2,600 ft.</b>	<b>10 minutes</b>
			1:28 PM	1,050 ft.	3 minutes
Sun	<b>21-Jul-13</b>	Overcast/ Rain	11:37 AM	1,250 ft.	8 minutes
			2:24 PM	1,600 ft.	8 minutes
			3:42 PM	1,600 ft.	3 minutes
			<b>4:52 PM</b>	<b>2,050 ft.</b>	<b>9 minutes</b>
Mon	<b>22-Jul-13</b>	Sunny	<b>11:54 AM</b>	<b>3,000 ft.</b>	<b>11 minutes</b>
			1:24 AM	1,500 ft.	6 minutes
			2:38 PM	1,150 ft.	4 minutes
			4:08 PM	2,350 ft.	6 minutes
			4:44 PM	2,200 ft.	5 minutes
Tue	<b>23-Jul-13</b>	Partly Cloudy	10:25 AM	950 ft.	3 minutes
			10:39 AM	507 ft.	1 minute
			11:40 AM	570 ft.	2 minutes
			<b>2:07 PM</b>	<b>1,000 ft.</b>	<b>9 minutes</b>
			2:56 PM	1,500 ft.	4 minutes
			4:52 PM	1,750 ft.	7 minutes
Wed	<b>24-Jul-13</b>	Sunny	2:23 PM	2,000 ft.	4 minutes
			<b>5:01 PM</b>	<b>4,300 ft.</b>	<b>14 minutes</b>
Thu	<b>25-Jul-13</b>	Rain	11:37 AM	4,200 ft.	19 minutes
			12:13 PM	3,330 ft.	10 minutes
			1:53 PM	3,300 ft.	11 minutes
			3:03 PM	3,500 ft.	15 minutes
			<b>3:29 PM</b>	<b>5,200 ft.</b>	<b>20 minutes</b>
			5:24 PM	3,850 ft.	10 minutes

## Observations from Vineyard Transit Authority (VTA) Bus Route Tapes

<b>Date: 7/26/2013</b>		<b>Weather: Cloudy/Rainy</b>		<b>Route: 13</b>	
<u>Time End of Line</u>	<u>Approx. Location</u>	<u>Time at 5 Corners</u>	<u>Travel Time</u>		
10:25 AM	Winds Up	10:35 AM	10 minutes		
10:53 AM	Fuel Tanks	11:01 AM	8 minutes		
11:37 AM	Winds Up	11:50 AM	13 minutes		
11:46 AM	Bridge (Tisbury side)	12:00 PM	14 minutes		
11:56 AM	Fuel Tanks	12:07 PM	11 minutes		
12:24 PM	Winds Up	12:32 PM	8 minutes		
12:42 PM	Fuel Tanks	12:50 PM	8 minutes		
1:06 PM	Eastville Beach	1:24 PM	18 minutes		
1:39 PM	Winds Up	1:52 PM	13 minutes		
1:57 PM	Draw Bridge	2:17 PM	20 minutes		
2:09 AM	Lagoon Landing	2:24 PM	15 minutes		

Queue Length/Time: July 17

Weather: Sunny






Time of Day: 2:10 pm

Queue Length: 870 ft.

Delay Time: 3 minutes



Time of Day: 3:28 pm

Queue Length: 5,100 ft.

Delay Time: 11 minutes

Time of Day: 4:52 pm

Queue Length: 3,600 ft.

Delay Time: 8 minutes



Queue Length/ Time: July 18

Weather: Sunny



An aerial photograph of a harbor area. A red line is drawn on the land, starting from a residential area and extending towards the water's edge, indicating a queue or delay zone. The harbor contains several boats and a pier.

Time of Day: 2:10pm

Queue Length: 760 ft.

Delay Time: 2 minutes

An aerial photograph of the same harbor area as the top image. The red line indicating the queue area is significantly longer, extending further into the residential area and following a different path towards the water.

Time of Day: 2:25 pm

Queue Length: 1,200 ft.

Delay Time: 5 minutes

An aerial photograph of a harbor area. A red line is drawn across the image, starting from a residential area on the left, curving along the waterfront, and extending towards the right. The harbor contains several boats and a pier. The surrounding area includes buildings and green spaces.

Time of Day: 3:41pm

Queue Length: 4,315 ft.

Delay Time:                     

An aerial photograph of the same harbor area as the top image. The red line follows a similar path but is shorter, ending at a different point along the waterfront. The harbor and surrounding area are the same as in the top image.

Time of Day: 4:44pm

Queue Length: 2,565 ft.

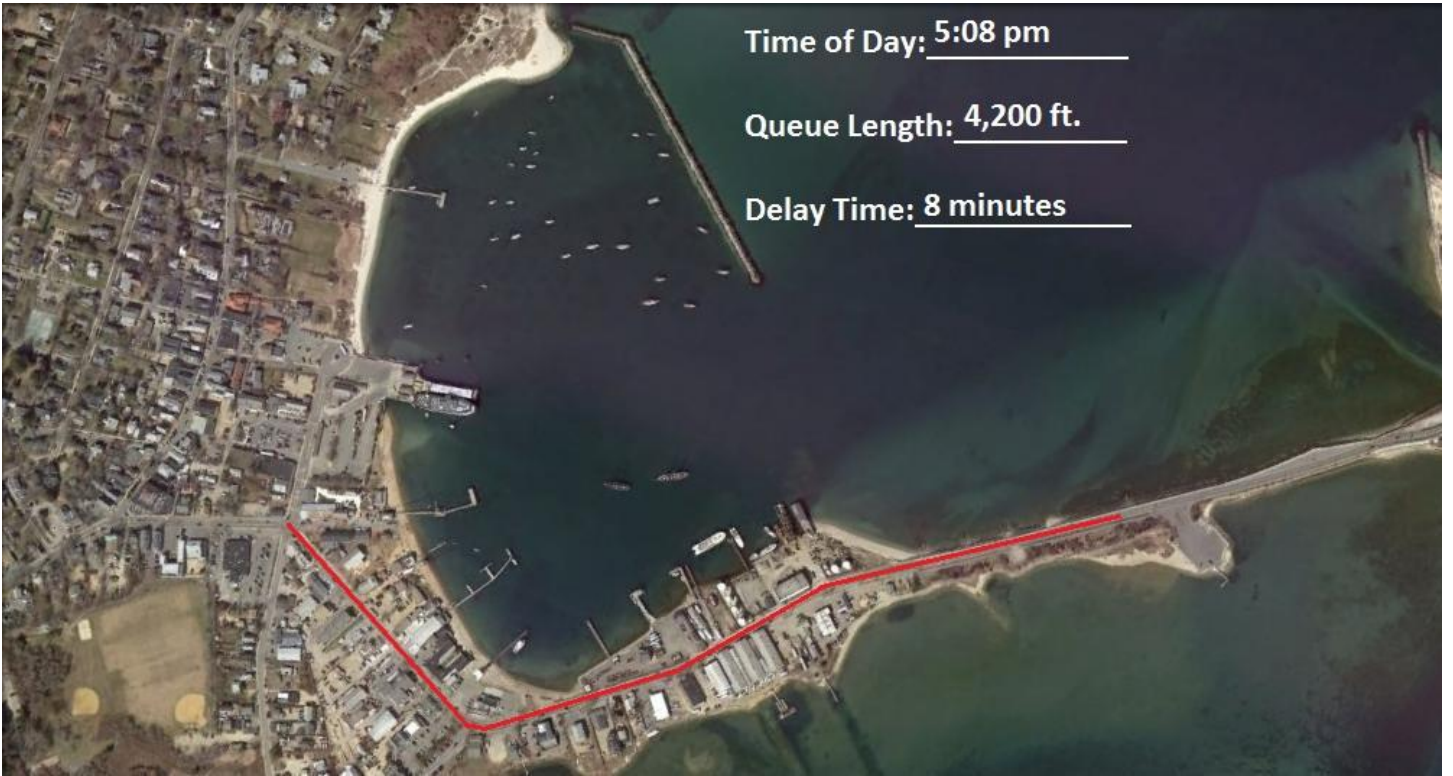
Delay Time: 11 mins.



Time of Day: 5:08 pm

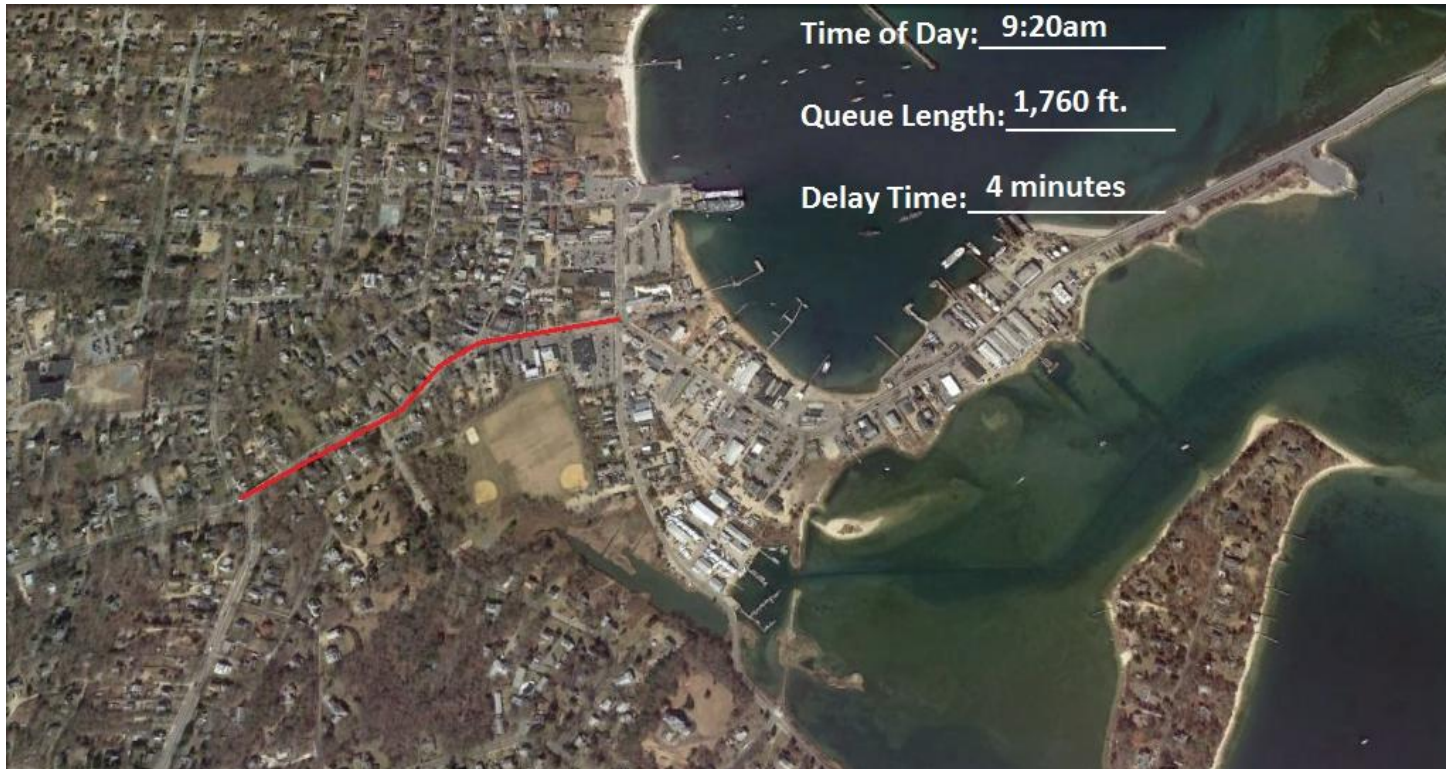
Queue Length: 4,200 ft.

Delay Time: 8 minutes



Queue Length/Time: July 19

Weather: Sunny




An aerial photograph of a harbor area. A red line is drawn across the image, starting from a residential area on the left, curving around a peninsula, and extending along a road on the right side of the harbor. The harbor contains several boats and a pier. The surrounding area includes residential buildings and green fields.

Time of Day: 12:35pm

Queue Length: 1,437 ft.

Delay Time: 4 minutes

An aerial photograph of the same harbor area as the top image. The red line indicating the queue path is significantly longer, extending further along the road on the right side of the harbor and curving back towards the residential area on the left. The harbor and surrounding landscape are the same as in the top image.

Time of Day: 1:22 pm

Queue Length: 3,300 ft.

Delay Time: 6 minutes

Time of Day: 4:11 pm

Queue Length: 1,150 ft.

Delay Time: 2 minutes



Queue Length/Time: July 20

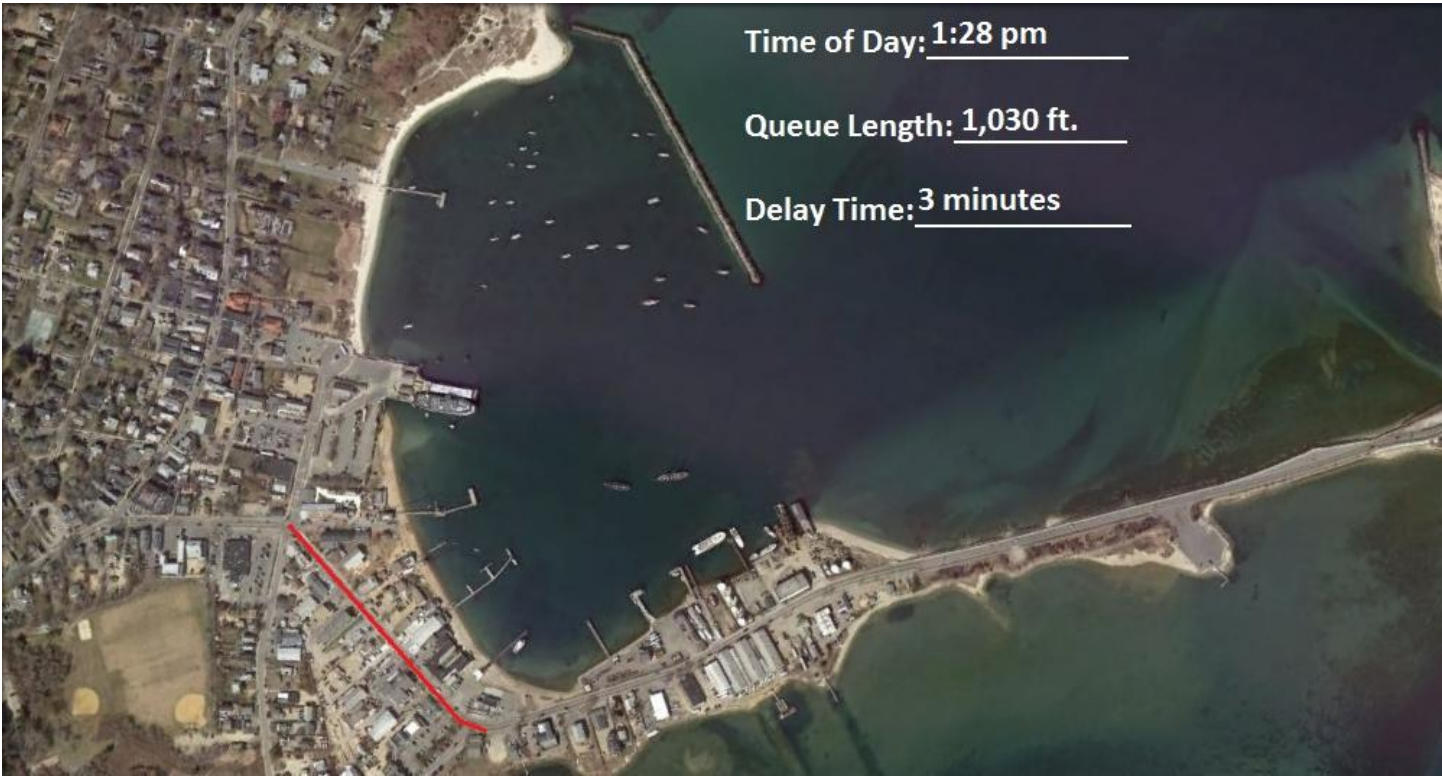
Weather: Sunny



Time of Day: 1:28 pm

Queue Length: 1,030 ft.


Delay Time: 3 minutes



Queue Length/Time: July 21

Weather: Rain/Cloudy



An aerial photograph of a harbor area. A red line is drawn across the land, starting from a residential area on the left, curving around a peninsula, and extending towards a dock area on the right. The harbor contains several boats and a large pier structure. The water is dark green, and the surrounding land is a mix of residential buildings and open fields.

Time of Day: 2:24 pm

Queue Length: 1,600 ft.

Delay Time: 8 minutes

An aerial photograph of the same harbor area as the top image. The red line is drawn in the same path, indicating the queue area. The harbor contains several boats and a large pier structure. The water is dark green, and the surrounding land is a mix of residential buildings and open fields.

Time of Day: 3:42 pm

Queue Length: 1,600 ft.

Delay Time: 3 minutes



Time of Day: 4:52 pm

Queue Length: 2,070 ft.

Delay Time: 8 minutes




Queue Length/Time: July 22

Weather: Sunny








Time of Day: 2:38 pm

Queue Length: 1,150 ft.

Delay Time: 4 minutes



Time of Day: 4:00 pm

Queue Length: 4,530 ft.


Delay Time: \_\_\_\_\_

An aerial photograph of a harbor area. A red line is drawn across the land, starting from a residential area on the left, curving around a peninsula, and extending towards a dock area on the right. The harbor contains several boats and a large pier structure. The water is dark, and the surrounding land is densely packed with buildings and parking lots.

Time of Day: 4:08 pm

Queue Length: 2,340 ft.

Delay Time: 6 minutes

An aerial photograph of the same harbor area as the top image. The red line indicating the queue area is in the same position. The harbor contains several boats and a large pier structure. The water is dark, and the surrounding land is densely packed with buildings and parking lots.

Time of Day: 4:44 pm


Queue Length: 2,190 ft.

Delay Time: 5 minutes

Queue Length/Time: July 23

Weather: Partly Cloudy




An aerial photograph of a harbor area. A red line is drawn on the land, starting from a residential area and extending towards the water's edge. The harbor contains several boats and a pier. The surrounding area includes buildings, roads, and green spaces.

Time of Day: 11:40 am

Queue Length: 570 ft.

Delay Time: 2 minutes

An aerial photograph of the same harbor area as the top image. The red line is significantly longer, extending further along the waterfront and through more residential areas, indicating a much larger queue.

Time of Day: 12:04 pm

Queue Length: 2,008 ft.

Delay Time: \_\_\_\_\_

An aerial photograph of a harbor area. A red line is drawn along a road that runs from the left side of the image, through a residential area, and then curves along the waterfront. The harbor contains several boats and a pier. The surrounding area includes buildings, parking lots, and green spaces.

Time of Day: 2:07 pm

Queue Length: 1,000 ft.

Delay Time: 9 minutes

An aerial photograph of the same harbor area as the top image. The red line follows the same path along the waterfront and through the residential area. The harbor contains several boats and a pier. The surrounding area includes buildings, parking lots, and green spaces.

Time of Day: 2:56 pm

Queue Length: 1,542 ft.

Delay Time: 4 minutes



An aerial photograph of a harbor area. A red line is drawn on the land, starting from a residential area and extending towards the water's edge. The harbor contains several boats and a pier. The water is dark, and the surrounding land is densely packed with buildings and roads.

Time of Day: 4:46 pm

Queue Length: 707 ft.

Delay Time:                     

An aerial photograph of the same harbor area as the top image. The red line is now significantly longer, extending further along the waterfront and through more residential areas, indicating a much larger queue.

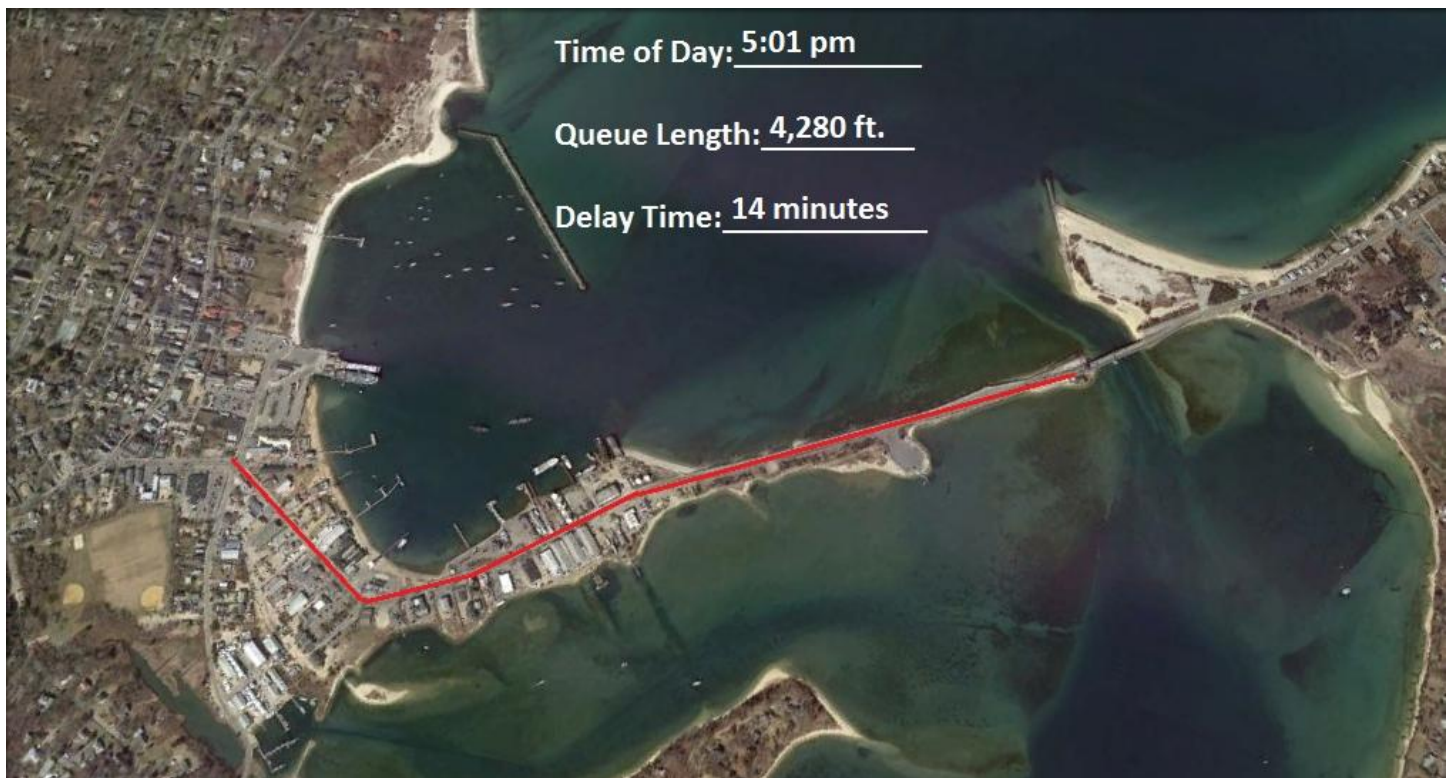
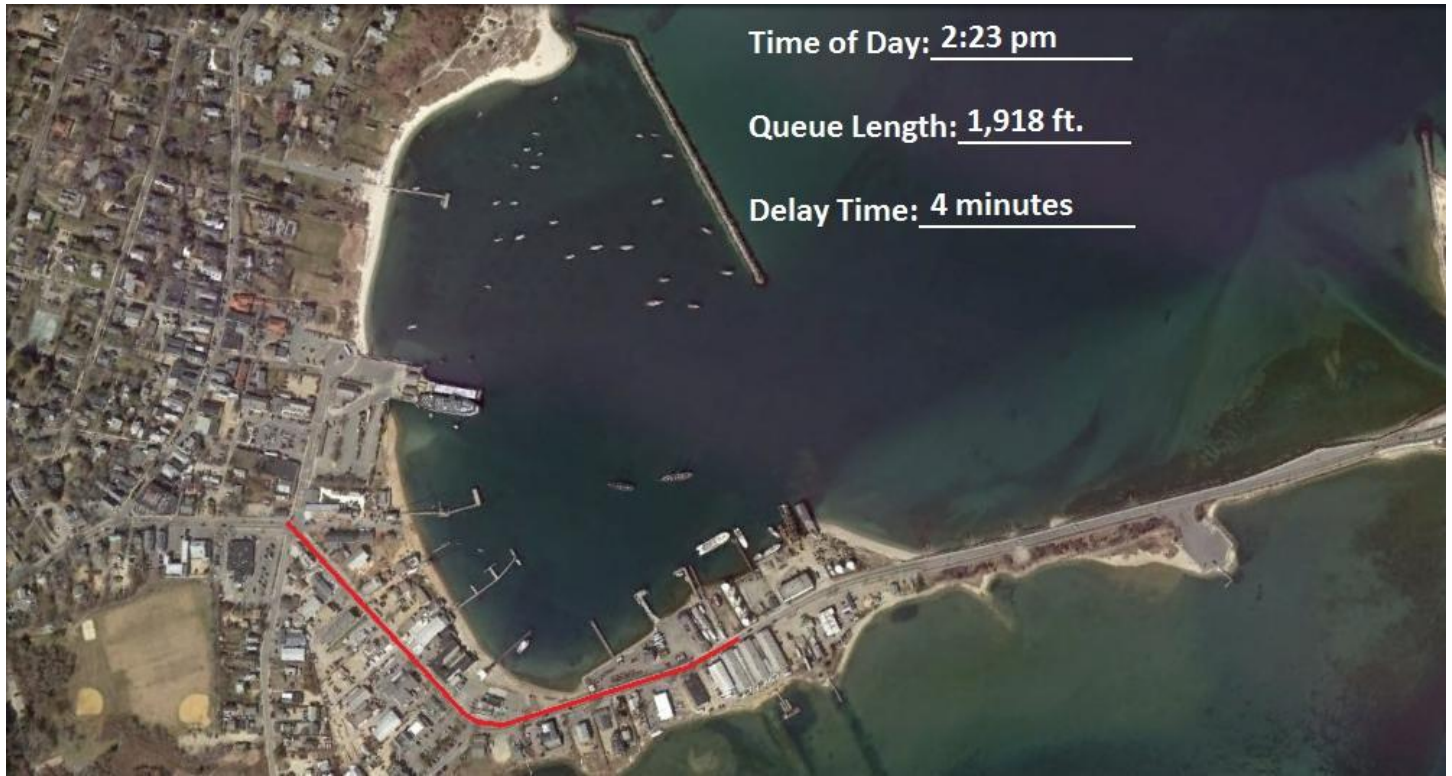
Time of Day: 4:52 pm

Queue Length: 1,750 ft.

Delay Time: 7 minutes

## Queue Length/Time: July 24


Weather: Sunny



Queue Length/Time: July 25

Weather: Rain




An aerial photograph of a harbor area. A red line is drawn across the image, starting from the left side near a residential area, curving around a peninsula, and extending towards the right side of the harbor. The harbor contains several boats and a pier. The surrounding area includes buildings and green fields.

Time of Day: 12:13 pm

Queue Length: 3,330 ft.

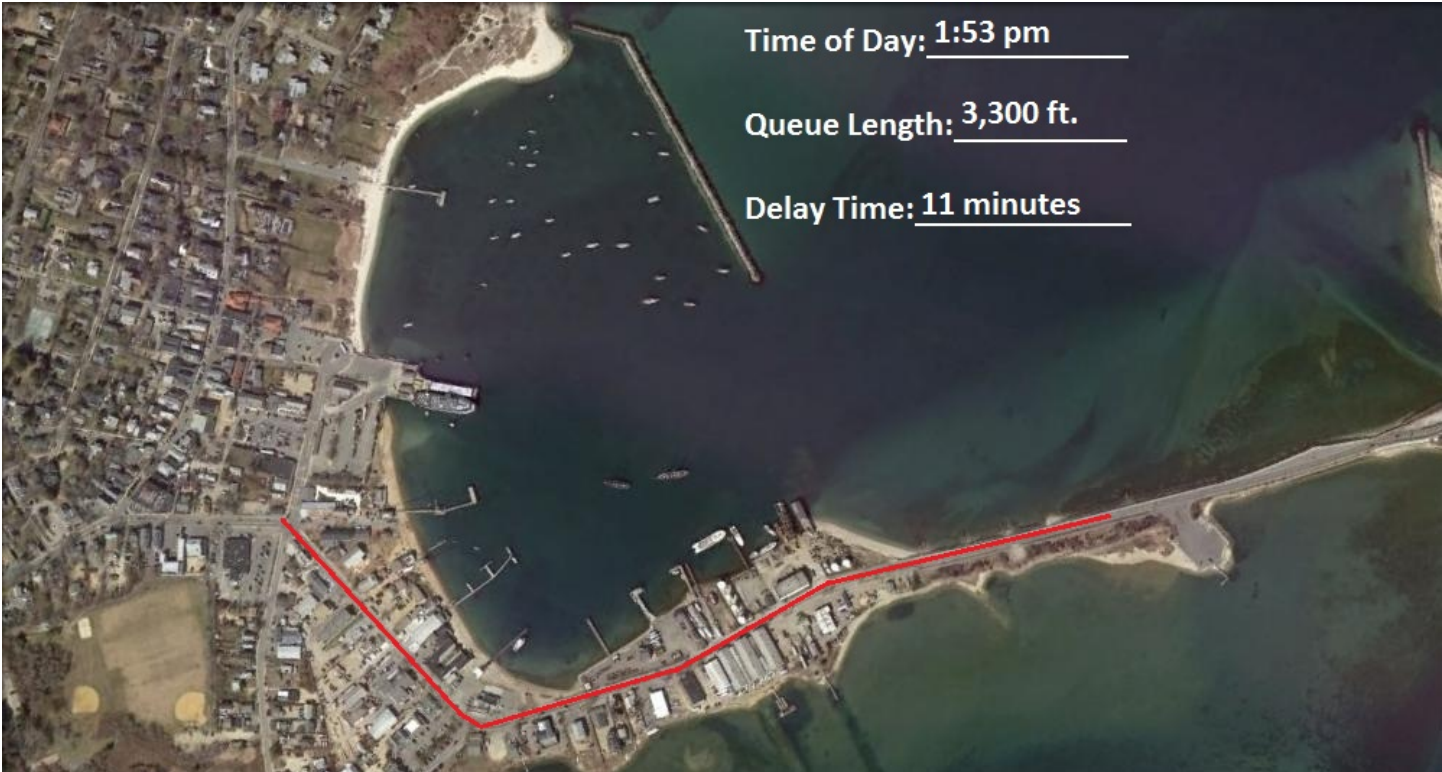
Delay Time: 10 minutes

An aerial photograph of the same harbor area as the first image. The red line indicating the queue path is longer than in the first image, extending further across the harbor and the surrounding land. The harbor contains several boats and a pier. The surrounding area includes buildings and green fields.

Time of Day: 12:56 pm

Queue Length: 4,675 ft.


Delay Time: \_\_\_\_\_

An aerial photograph of a harbor area. A red line is drawn across the land, starting from a residential area on the left, curving around a peninsula, and extending along the waterfront towards the right. The harbor contains several boats and a pier. The water is dark green.

Time of Day: 1:53 pm

Queue Length: 3,300 ft.

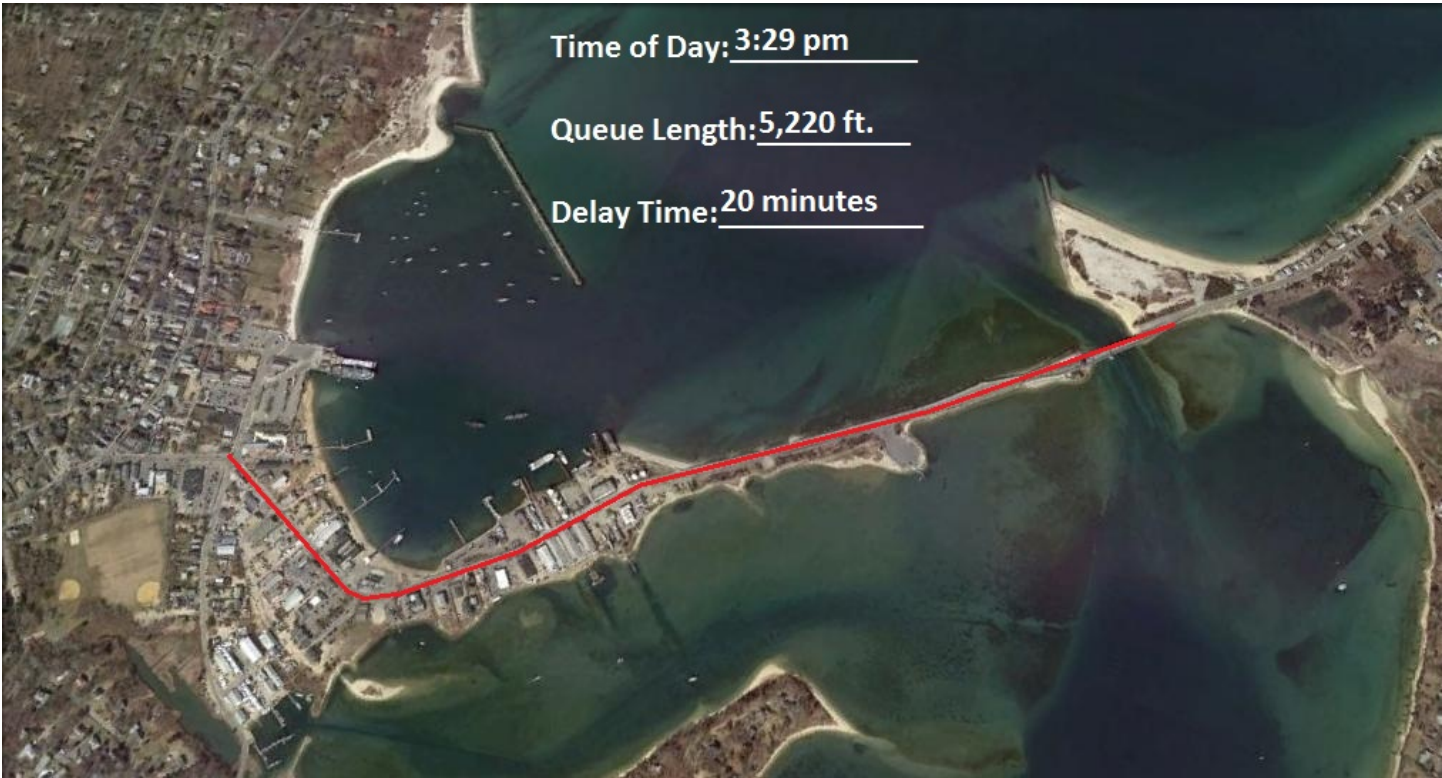
Delay Time: 11 minutes

An aerial photograph of the same harbor area as the top image. The red line indicating the queue path is identical in location and shape. The harbor contains several boats and a pier. The water is dark green.

Time of Day: 3:03 pm

Queue Length: 3,580 ft.

Delay Time: 15 minutes



Time of Day: 6:12 pm

Queue Length: 2,450 ft.

Delay Time: 7 minutes

