



June 7, 2013

Memo to DRI File 635

Subject: MVTV Landscape Plan and Driveway Realignment (DRI 635-M2)

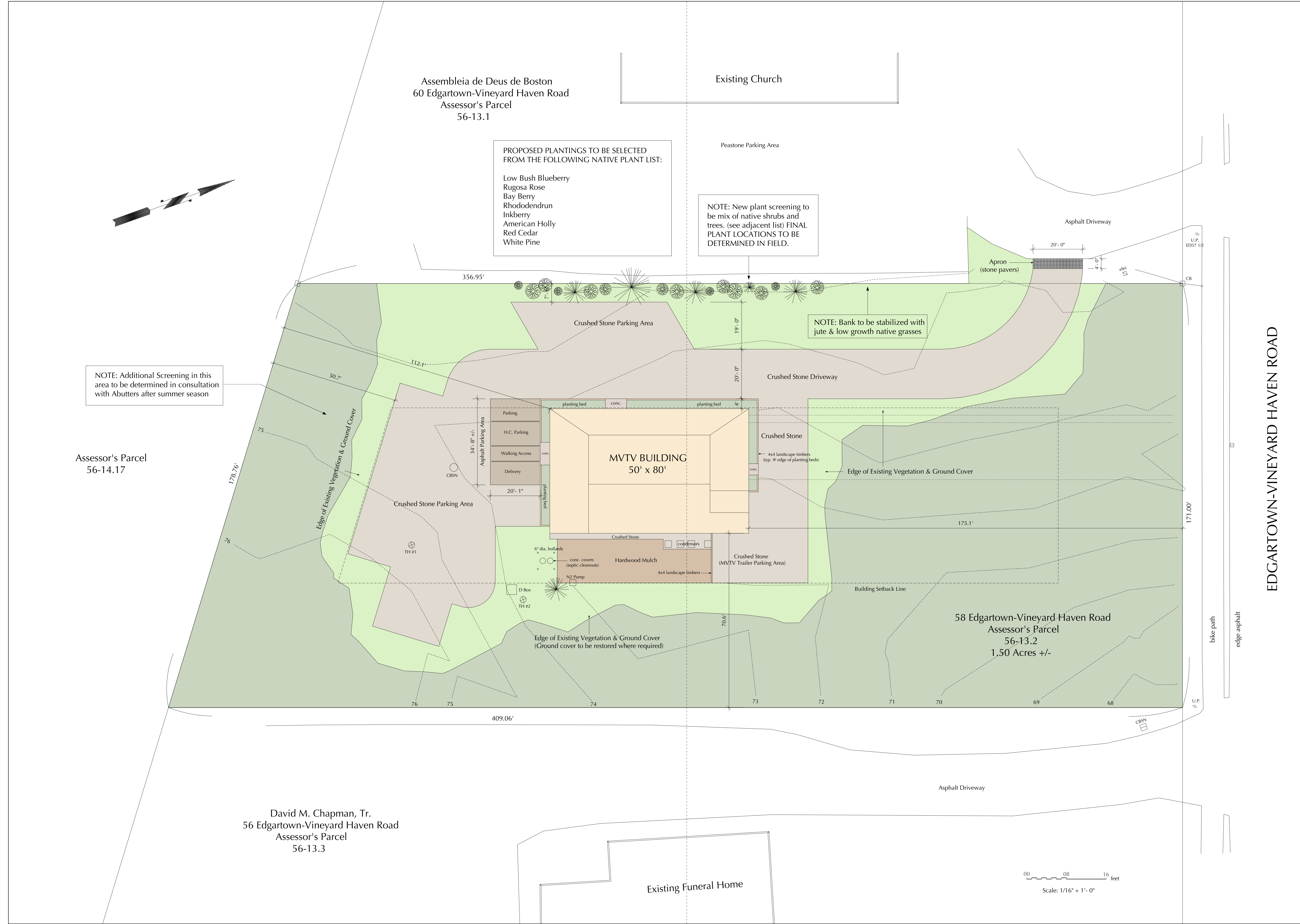
On Monday June 3, 2013 the Land Use Planning Committee (LUPC) of the Martha's Vineyard Commission approved the landscape plan for MVTV located at located on Edgartown-Vineyard Haven Road in Oak Bluffs (Map 56 Lot 13.2 -1.5acres). The landscape plan submitted by Bruce MacNelly in color dated May 30, 2013 (stamped approved June 3, 2013) denotes areas to be cleared and replanted, areas to remain untouched, areas for future screening and parking, and specific plants to be planted along property boundary with the World Revival Church. The plan also shows a realigned driveway in order to retain some existing trees and shift the parking from along the building to along the property line.

Sincerely,

Paul Foley, AICP
DRI Coordinator/ Planner
Martha's Vineyard Commission

CC: Stephen Warriner; Bruce MacNelly

T 508-693-3453 – f 508-693-7894 – P.O. BOX 1447 – 33 New York Avenue – Oak Bluffs, MA 02557
INFO@MVCOMMISSION.ORG – WWW.MVCOMMISSION.ORG



NOTE: Additional Screening in this area to be determined in consultation with Abutters after summer season

PROPOSED PLANTINGS TO BE SELECTED FROM THE FOLLOWING NATIVE PLANT LIST:
 Low Bush Blueberry
 Rugosa Rose
 Bay Berry
 Rhododendron
 Inkberry
 American Holly
 Red Cedar
 White Pine

NOTE: New plant screening to be mix of native shrubs and trees. (see adjacent list) FINAL PLANT LOCATIONS TO BE DETERMINED IN FIELD.

NOTE: Bank to be stabilized with jute & low growth native grasses

bike path
 edge asphalt

Scale: 1/16" = 1'- 0"

EDGARTOWN-VINEYARD HAVEN ROAD