

GENERAL NOTES

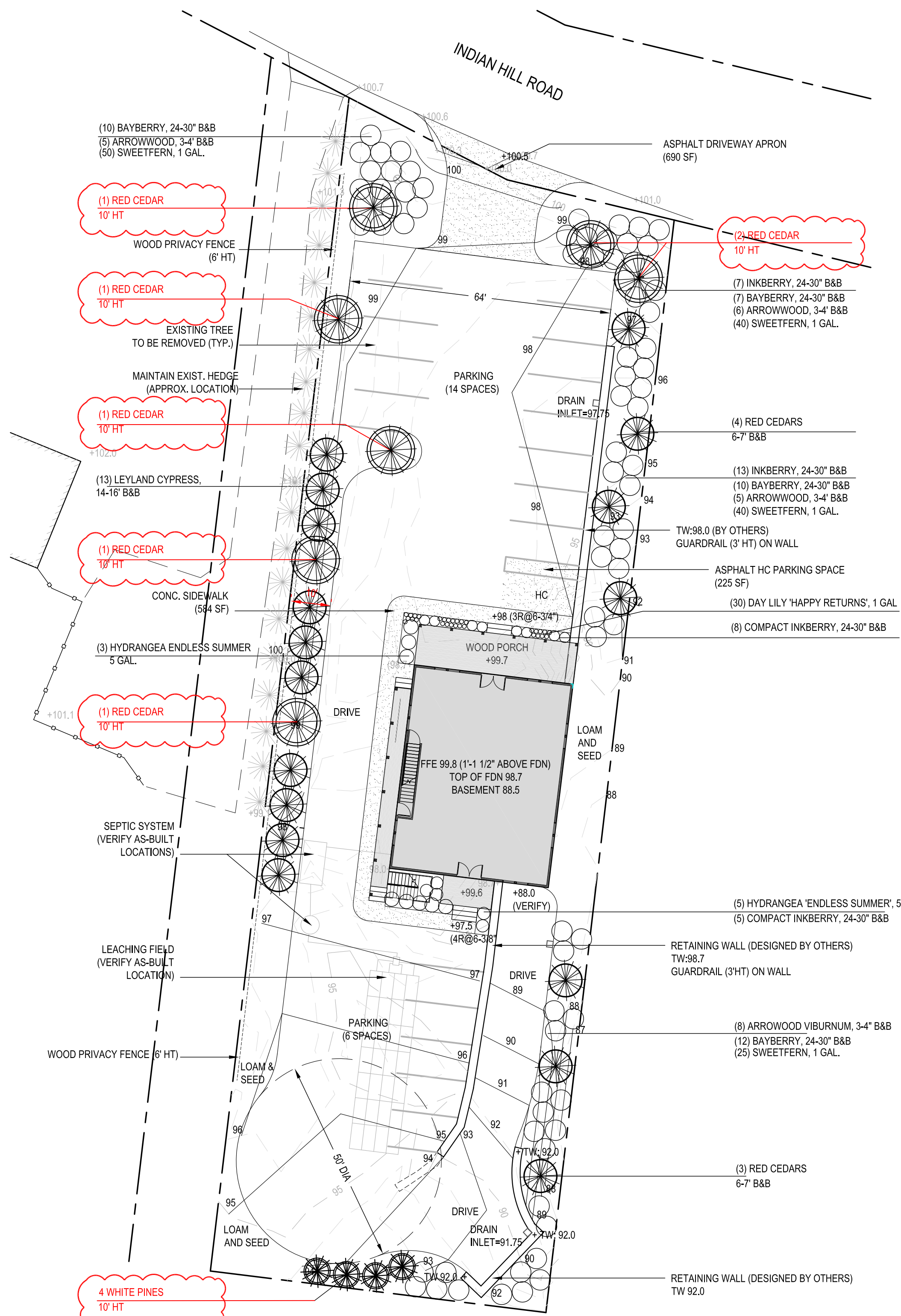
1. THE CONTRACTOR SHALL VERIFY ALL EXISTING CONDITIONS AND UTILITIES AND REPORT ANY DISCREPANCIES TO THE LANDSCAPE ARCHITECT.
2. IT IS THE CONTRACTORS RESPONSIBILITY TO VERIFY THE LOCATION OF ALL UTILITIES BY NOTIFYING DIG-SAFE AT 1-800-322-4844 AT LEAST 72 HOURS PRIOR TO ANY EXCAVATION.
3. THE CONTRACTOR SHALL CONDUCT PRELIMINARY INVESTIGATIONS INCLUDING ALL NECESSARY EXCAVATION TO DETERMINE IF THE WORK CAN BE DONE AS SHOWN ON THE PLANS. CHANGES MAY BE MADE AS REQUIRED BY FIELD CONDITIONS AND AS DIRECTED BY THE LANDSCAPE ARCHITECT.
4. ALL EXISTING UTILITIES MAY NOT BE SHOWN ON THE DRAWING. THE CONTRACTOR SHALL ASSUME RESPONSIBILITY FOR DETERMINING THE EXACT LOCATION, SIZE, AND TYPE OF ALL UNDERGROUND UTILITIES AND FOR PROTECTING ALL LINES DURING CONSTRUCTION.
5. ALL WORK SHALL COMPLY WITH ALL APPLICABLE STATE AND LOCAL REGULATIONS.

LAYOUT NOTES

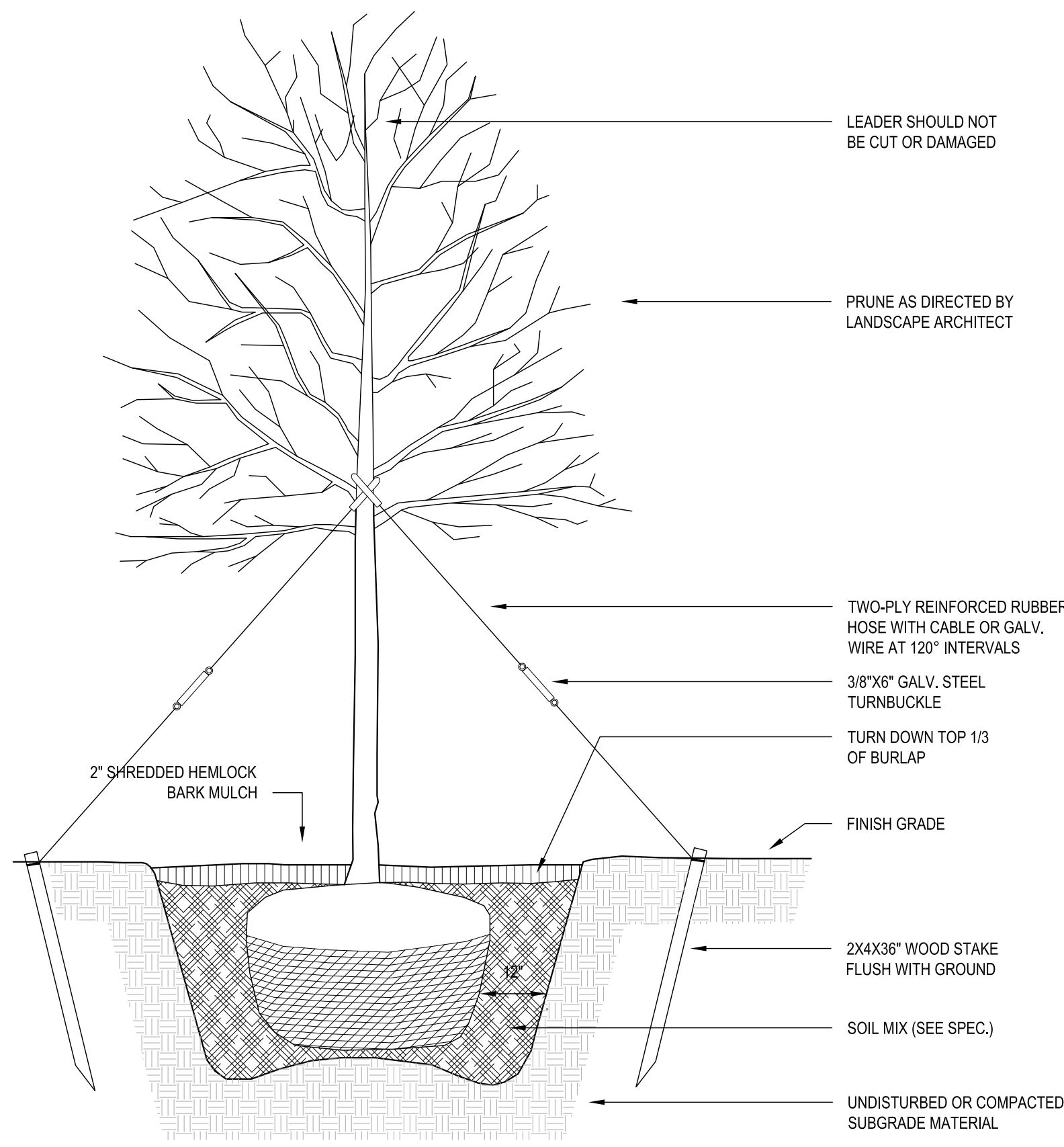
1. ALL PAVEMENTS SHALL BE STAKED BY THE CONTRACTOR FOR APPROVAL BY THE LANDSCAPE ARCHITECT BEFORE CONSTRUCTION BEGINS. THE CONTRACTOR SHALL VERIFY THE LAYOUT OF ALL OTHER SITE ELEMENTS AND REPORT DISCREPANCIES TO THE LANDSCAPE ARCHITECT.
2. AT ALL LOCATIONS WHERE ROADWAY OR SIDEWALK PAVEMENT ABUTS NEW CONSTRUCTION, THE EDGE OF EXISTING PAVEMENT SHALL BE SAW CUT TO A SMOOTH EDGE.
3. ALL LINES AND DIMENSIONS ARE PARALLEL, PERPENDICULAR, OR RADIAL TO THE LINES FROM WHICH THEY ARE MEASURED.
4. ALL DIMENSIONS ARE IN FEET AND TENTHS AND INCHES.

PLANTING NOTES

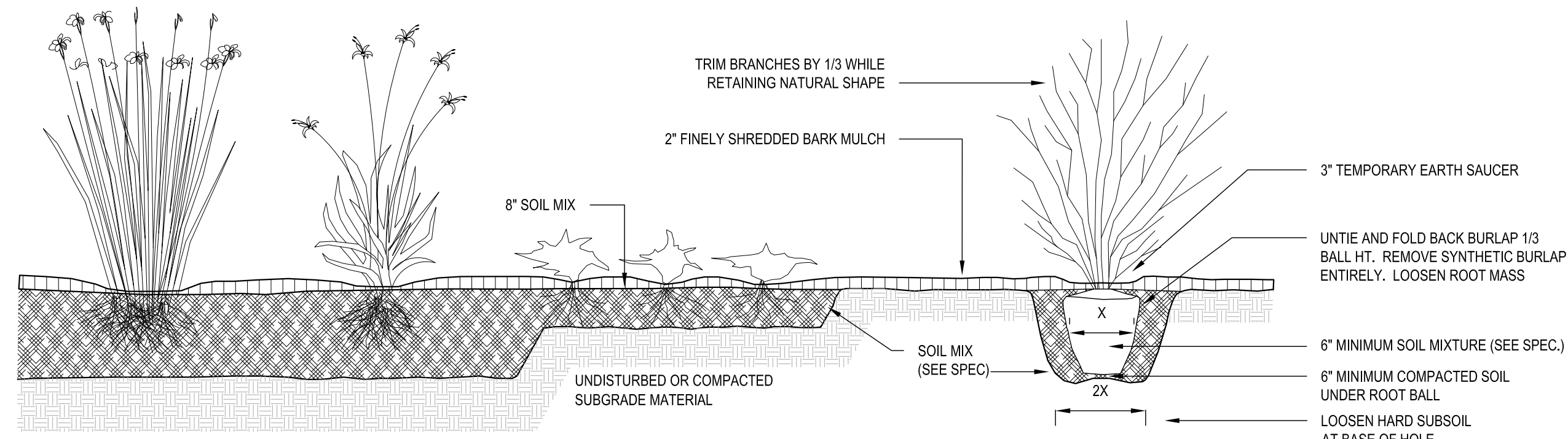
1. LANDSCAPE CONTRACTOR SHALL VISIT SITE PRIOR TO SUBMITTING BID TO BECOME COMPLETELY FAMILIAR WITH SITE CONDITIONS.
2. NO PLANTING WILL BE INSTALLED UNTIL ALL GRADING AND CONSTRUCTION HAS BEEN COMPLETED IN THE IMMEDIATE AREA.
3. CONTRACTOR TO VERIFY ALL UTILITIES ON PROPERTY AND TO PROTECT ALL UTILITIES DURING EXCAVATION.
4. IF THERE IS A DISCREPANCY BETWEEN THE NUMBER OF PLANTS SHOWN ON THE PLAN AND THE NUMBER OF PLANTS SHOWN IN THE PLANT LIST, THE NUMBER OF PLANTS SHOWN ON THE LIST WILL TAKE PRECEDENCE.
5. ALL CONTAINER MATERIAL TO BE GROWN IN CONTAINER A MINIMUM OF SIX MONTHS.
6. ALL MATERIAL SHALL COMPLY WITH THE LATEST EDITION OF THE AMERICAN STANDARD FOR NURSERY STOCK, ACCORDING TO THE AMERICAN ASSOCIATION OF NURSERYMEN.
7. CONTRACTOR SHALL REPAIR ALL DAMAGE TO PROPERTY FROM PLANTING OPERATIONS AT NO COST TO THE OWNER.
8. CONTRACTOR SHALL GUARANTEE NEW PLANT MATERIAL THROUGH ONE CALENDAR YEAR FROM TIME OF PROVISIONAL ACCEPTANCE.
9. ALL PROPOSED PLANTS SHALL BE LOCATED CAREFULLY AS SHOWN ON THE PLANS AND THE PLACEMENT SHALL BE APPROVED BY THE LANDSCAPE ARCHITECT BEFORE THE INSTALLATION.
10. ALL DISTURBED AREAS NOT TO BE PAVED OR PLANTED SHALL BE LOAMED AND SEEDED AS SHOWN. SEE SPECIFICATIONS FOR SOIL PREPARATION AND SEED MIX.
11. TWO INCH (2") DEEP, FINELY SHREDDED BARK MULCH WILL BE INSTALLED AROUND ALL TREES AND SHRUBS THAT ARE ISOLATED FROM GROUND COVER AREAS AND GENERAL SHRUB MASSES.
12. ALL PLANT MATERIAL SHALL BE INSPECTED BY THE LANDSCAPE ARCHITECT ON SITE PRIOR TO INSTALLATION. THE LANDSCAPE ARCHITECT WILL TAG ALL TREES AT THE NURSERY AND INSPECT THEM AFTER DELIVERY TO THE SITE. SEE SPECIFICATIONS FOR TAGGING, INSPECTION, AND ACCEPTANCE OF PLANT MATERIAL.
13. LANDSCAPE ARCHITECT SHALL CONFIRM PLANT LIST AND APPROVE SUBSTITUTIONS OF PLANT VARIETIES PRIOR TO ORDERING OF MATERIAL.
14. SOIL MIX: 1/3 PEAT MOSS, 1/3 SCREENED LOAM, 1/3 DEHYDRATED MANURE.
15. THE OWNER RESERVES THE RIGHT TO SUBSTITUTE PLANT SELECTIONS WITH PLANTS OF SIMILAR CHARACTERISTICS IF THE SPECIFIED PLANTS ARE NOT AVAILABLE IN ACCEPTABLE QUANTITIES OR CONDITIONS.



1 SITE PLAN
L1 1"=20'-0"



2 DECIDUOUS TREE PLANTING DETAIL
L1 1/2"=1'-0"



3 PERENNIAL, GROUND COVER, & SHRUB PLANTING DETAIL
L1 1/2"=1'-0"

HART PROPERTY
INDIAN HILL ROAD
WEST TISBURY, MA

PROJECT NUMBER:	0632
DRAWN BY:	JC
CHECKED BY:	KMH
SCALE:	AS NOTED
DATE:	12.04.06
REVISIONS:	
DRIVEWAY	12.14.06
PLANTING, SERVICE DRIVE	01.24.07
PAVED AREA (1,500 SF MAX)	04.03.08
	03.15.10
WEST TISBURY PLANNING BOARD:	12.24.10