

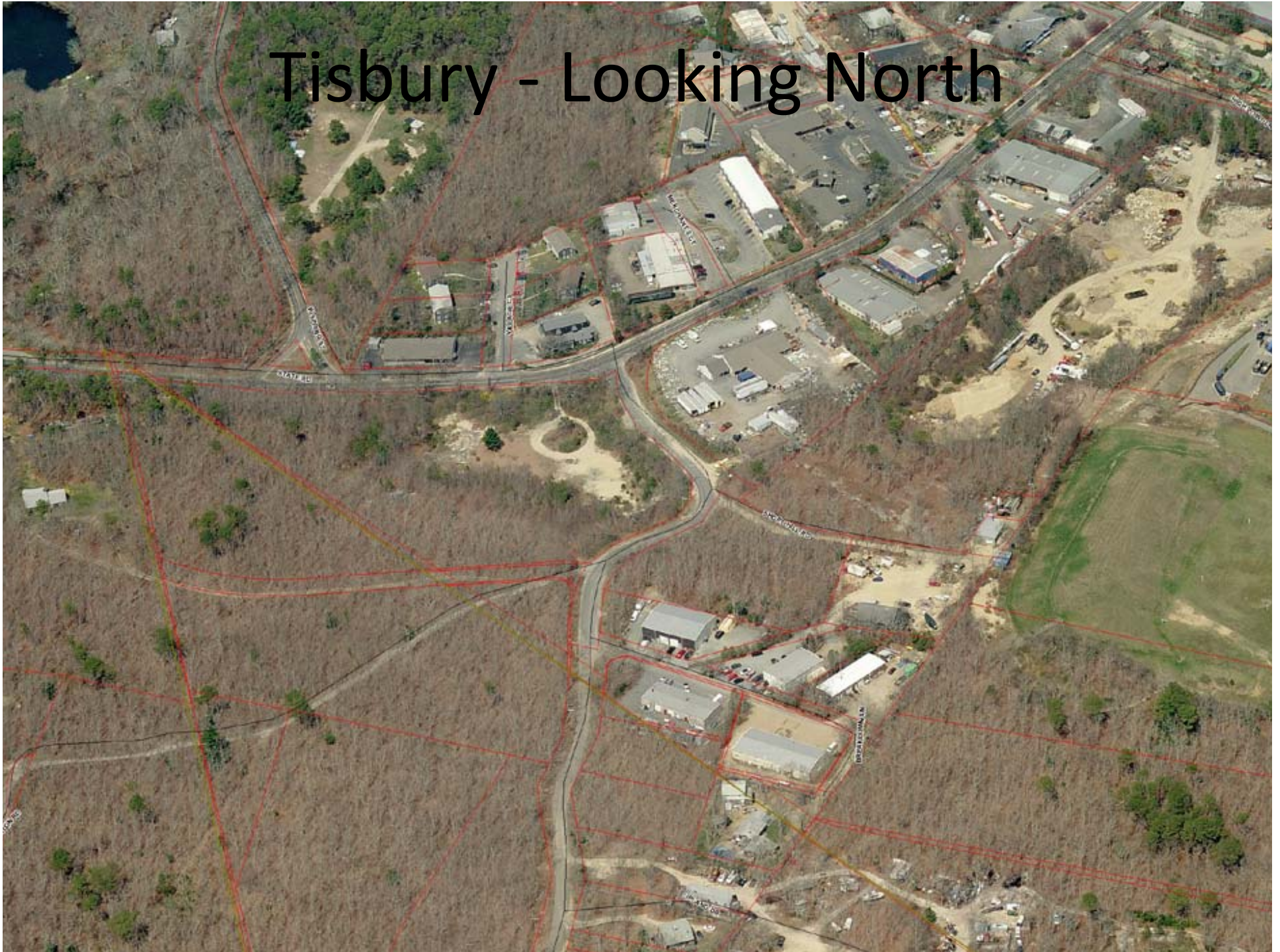
Proposed VNA Site



Breakdown Lane, Tisbury



Tisbury - Looking North

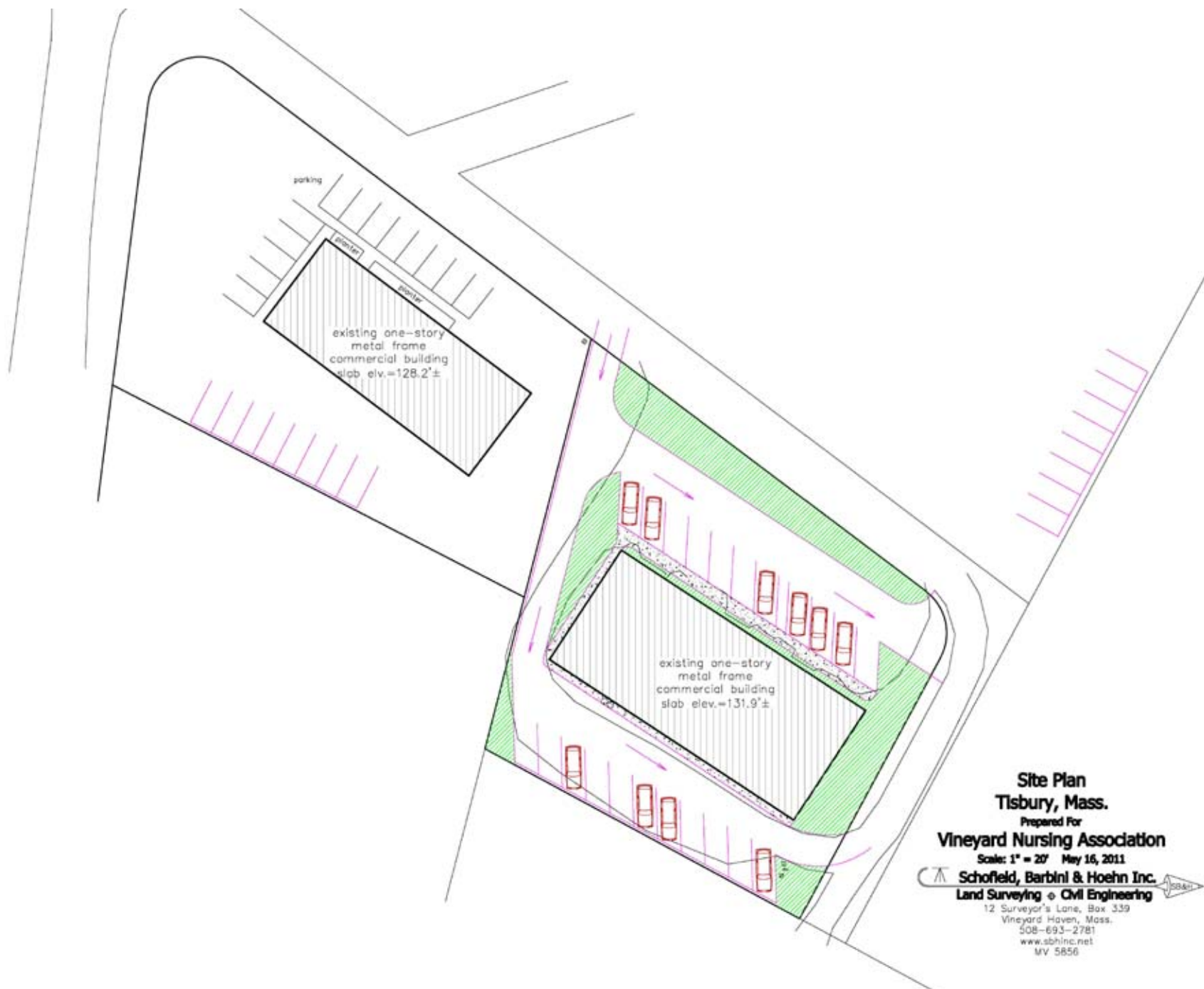


Tisbury - Looking South





BREAKDOWN LN



existing one-story
metal frame
commercial building
slab elev.=128.2'±

existing one-story
metal frame
commercial building
slab elev.=131.9'±

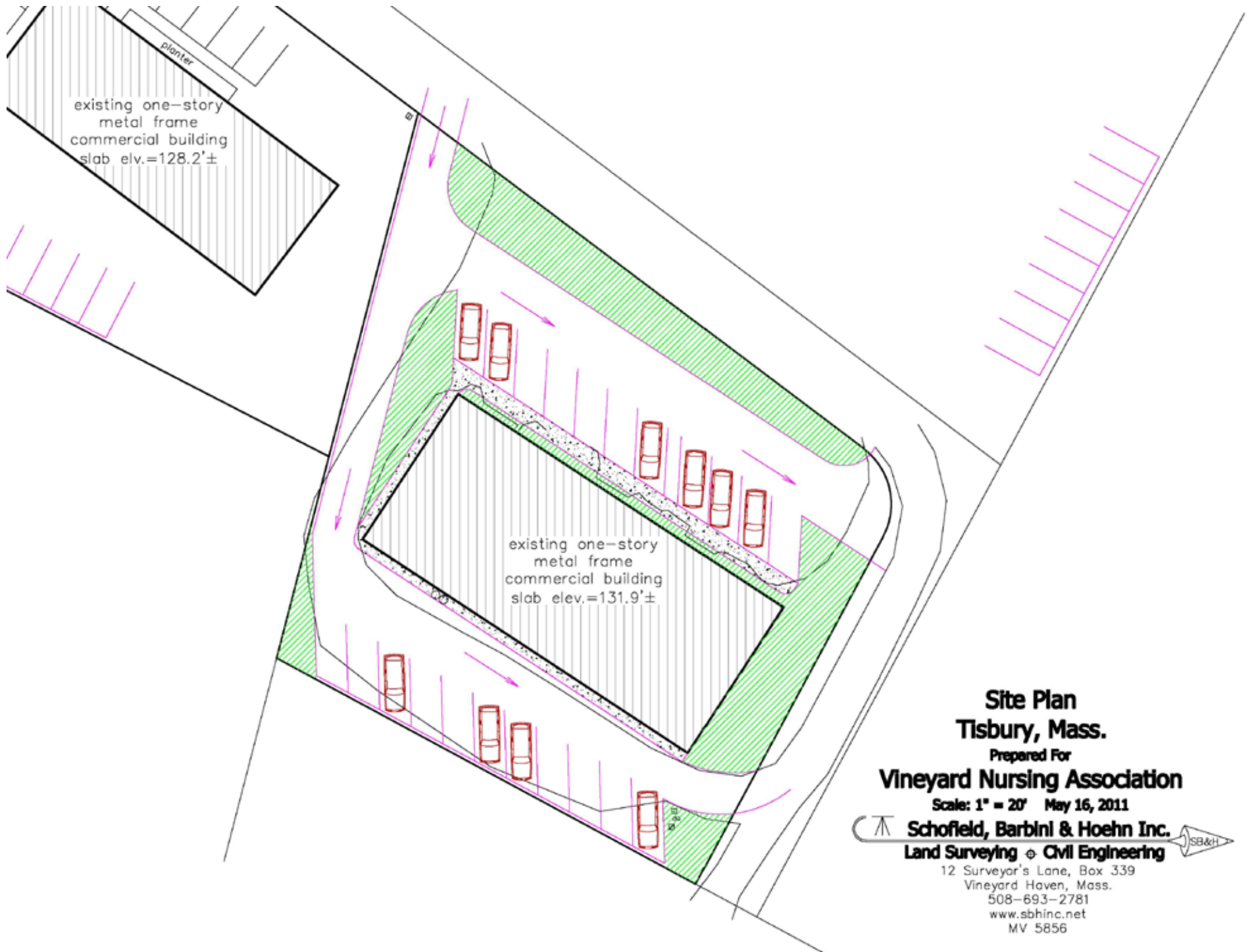
**Site Plan
Tisbury, Mass.**

Prepared For
Vineyard Nursing Association

Scale: 1" = 20' May 16, 2011

Schofield, Barbini & Hoehn Inc.
Land Surveying • Civil Engineering

12 Surveyor's Lane, Box 339
Vineyard Haven, Mass.
508-693-2781
www.sbhinc.net
MV 5856



**Site Plan
Tisbury, Mass.**

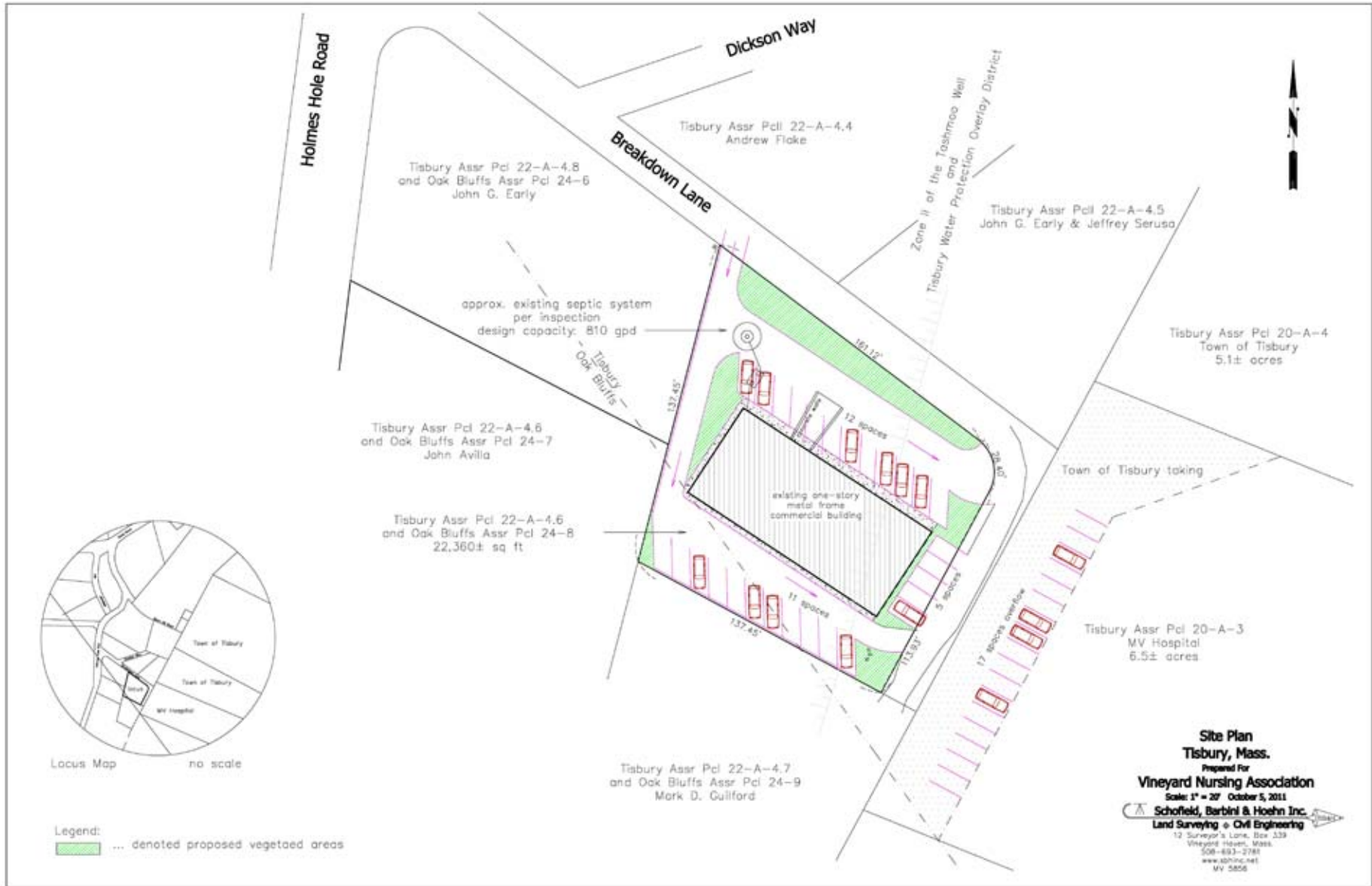
Prepared For

Vineyard Nursing Association

Scale: 1" = 20' May 16, 2011

Schofield, Barbini & Hoehn Inc. 
Land Surveying ◊ Civil Engineering

12 Surveyor's Lane, Box 339
Vineyard Haven, Mass.
508-693-2781
www.sbhinc.net
MV 5856



Holmes Hole Road

Dickson Way

Breakdown Lane

Tisbury Assr Pcl 22-A-4.4
Andrew Floke

Tisbury Assr Pcl 22-A-4.8
and Oak Bluffs Assr Pcl 24-6
John G. Early

Tisbury Assr Pcl 22-A-4.5
John G. Early & Jeffrey Serusa

Tisbury Assr Pcl 20-A-4
Town of Tisbury
5.1± acres

approx. existing septic system
per inspection
design capacity: 810 gpd

Zone II of the Tashmoa Well
and
Tisbury Water Protection Overlay District

Tisbury Assr Pcl 22-A-4.6
and Oak Bluffs Assr Pcl 24-7
John Avilla

Town of Tisbury taking

Tisbury Assr Pcl 22-A-4.6
and Oak Bluffs Assr Pcl 24-8
22,360± sq ft

existing one-story
metal frame
commercial building

Tisbury Assr Pcl 20-A-3
MV Hospital
6.5± acres

Tisbury Assr Pcl 22-A-4.7
and Oak Bluffs Assr Pcl 24-9
Mark D. Gullford



Locus Map no scale

Legend:
 ... denoted proposed vegetated areas

Site Plan
Tisbury, Mass.
 Prepared For
Vineyard Nursing Association
 Scale: 1" = 20' October 5, 2011
 **Schofield, Barbin & Hoshn Inc.**
Land Surveying • Civil Engineering
 12 Surveyor & Linc. Box 133
 Vineyard Haven, Mass.
 508-693-2781
 www.sdninc.net
 MV 5856



John Early Building















Parking in back



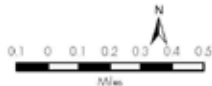
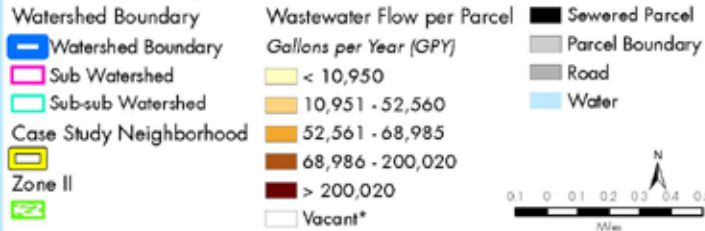
Existing Trail – Future Bike Path



Location of Public Parking in Back

Tashmo Pond Watershed Wastewater Flow

Neighborhood Boundaries Revised April 2011



Compiled by: MWC, C. Seidel, 4/21/2011
 Data Source: Parcel - Edg, OB, Tj; Cartographic Associates
 2009; (P, Tj) Full Circle Tech 2007; Watershed boundary -
 MWC 2009; Wastewater flow - Town 2008 & MWC 2010;
 Neighborhoods - MWC 2011; Zone II - MassGIS/DEF 2009
 File: wt_watershed_flow_rev.mxd

*Vacant includes properties with
 accessory buildings (i.e. barns,
 garages, etc), conservation land,
 undeveloped town land, agricultural
 lands.

