

**WEST CHOP CLUB**

**SPORTS COURTS RENOVATIONS**

Owner & Client  
West Chop Club  
163 Ingersoll Ave  
Westport, MA 01561

Landscape Architect  
Mark W. Williams Associates, Inc.  
Landscape Architects  
231 Conzouge, Massachusetts  
Tel: 617-693-2076

**LEGEND**

- L.L.O.W.** Limit of Work
- PL** Property Line
- 50' Offset from Property Line
- Existing Leaching Field. Contractor to Verify Extents and Elevations
- △ Building Entry
- AD-X Area Drain

**PLANTING LEGEND**

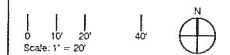
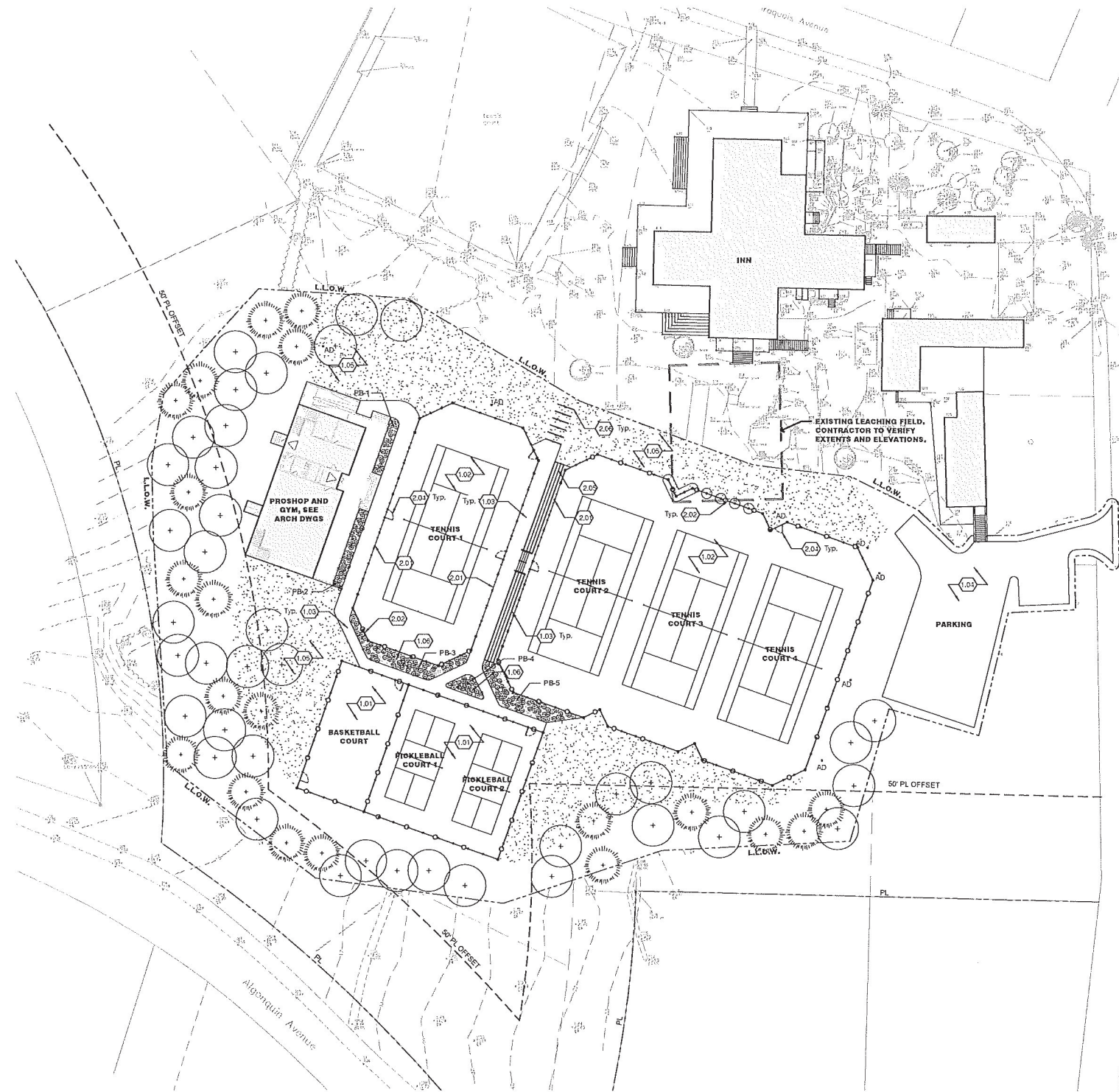
- PB-X** Plant Bed
- Lawn
- ⊕ Shrub
- ⊕ Proposed Deciduous Tree
- ⊙ Proposed Evergreen Tree
- ⊙ Existing Tree to Remain

**PLANTING NOTES:**

1. For Materials Notes, See L100 Series.
2. Confirm Planting Layout with Landscape Architect Prior to Planting. Landscape Architect to Review Stakes For Trees and Large Shrubs in the Field Prior to Placement. Do Not Proceed Without Landscape Architect Approval. State All Site Lighting Prior to Tree Staking for Coordination.
3. Groundcover and Bulb Layout Shall be Performed in the Field with Landscape Architect.
4. All Plant Beds Shall be Covered with Mulch.

**PLANT SCHEDULE - WEST CHOP CLUB SPORTS COURTS RENOVATIONS**

QTY	TYPE	NOTES
40	Deciduous Ornamental Tree	4" CAL. B&B
20	Evergreen Tree	12" HT. B&B
200	Groundcover Shrub	3'-4" HT. B&B
2,000	Perennials	#1 Cont. 12" OC
17,000 SF	Lawn Sod	



STATUS  
Sports Courts Permit Package

NO.	DATE	DESCRIPTION

DRAWING TITLE  
Planting Plan

JOB NUMBER: H1A # 101720 SHEET NO. OF  
DATE: 7/23/24  
DRAWN BY: MVA  
CHECKED BY: MVA  
L3.01

NUMBERED West Chop Club Meeting 12, Call: 617-693-2076, 12/11/2024 10:44 AM