

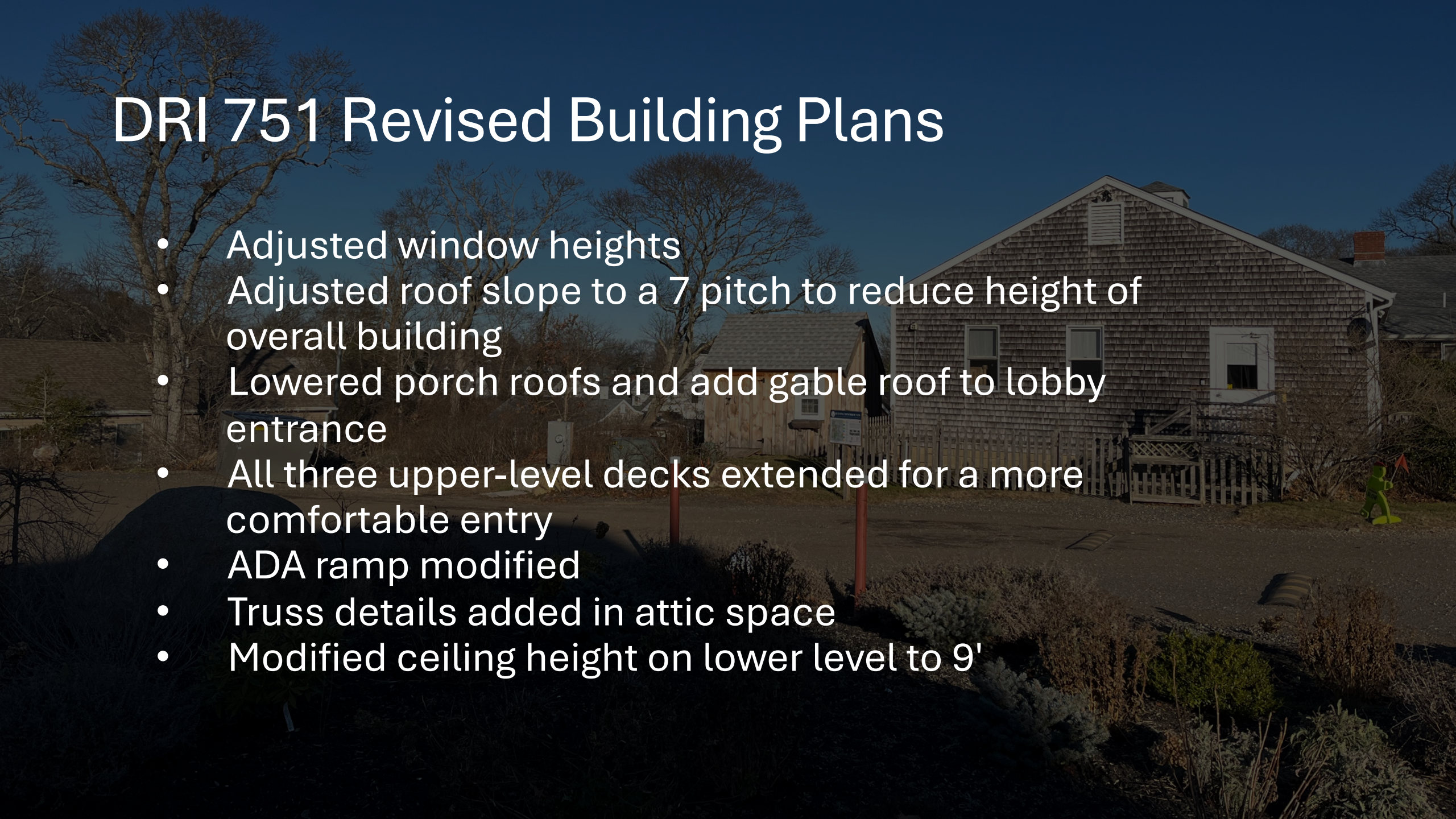
New Material

DRI 751
Vineyard
Montessori
School
Expansion



DRI 751 Revised Building Plans

- Adjusted window heights
- Adjusted roof slope to a 7 pitch to reduce height of overall building
- Lowered porch roofs and add gable roof to lobby entrance
- All three upper-level decks extended for a more comfortable entry
- ADA ramp modified
- Truss details added in attic space
- Modified ceiling height on lower level to 9'



DRI 751 Revised Building Plans

- Ridge height lowered two feet, two inches
- Approximately 31 feet from lowest grade to ridge
- Approximately 24 feet from highest grade to ridge
- Average grade to ridge = 27 feet





DRI 751 Landscape & Drainage

Preliminary plans provided

DRI 751 Housing



DRI 751 Offers

