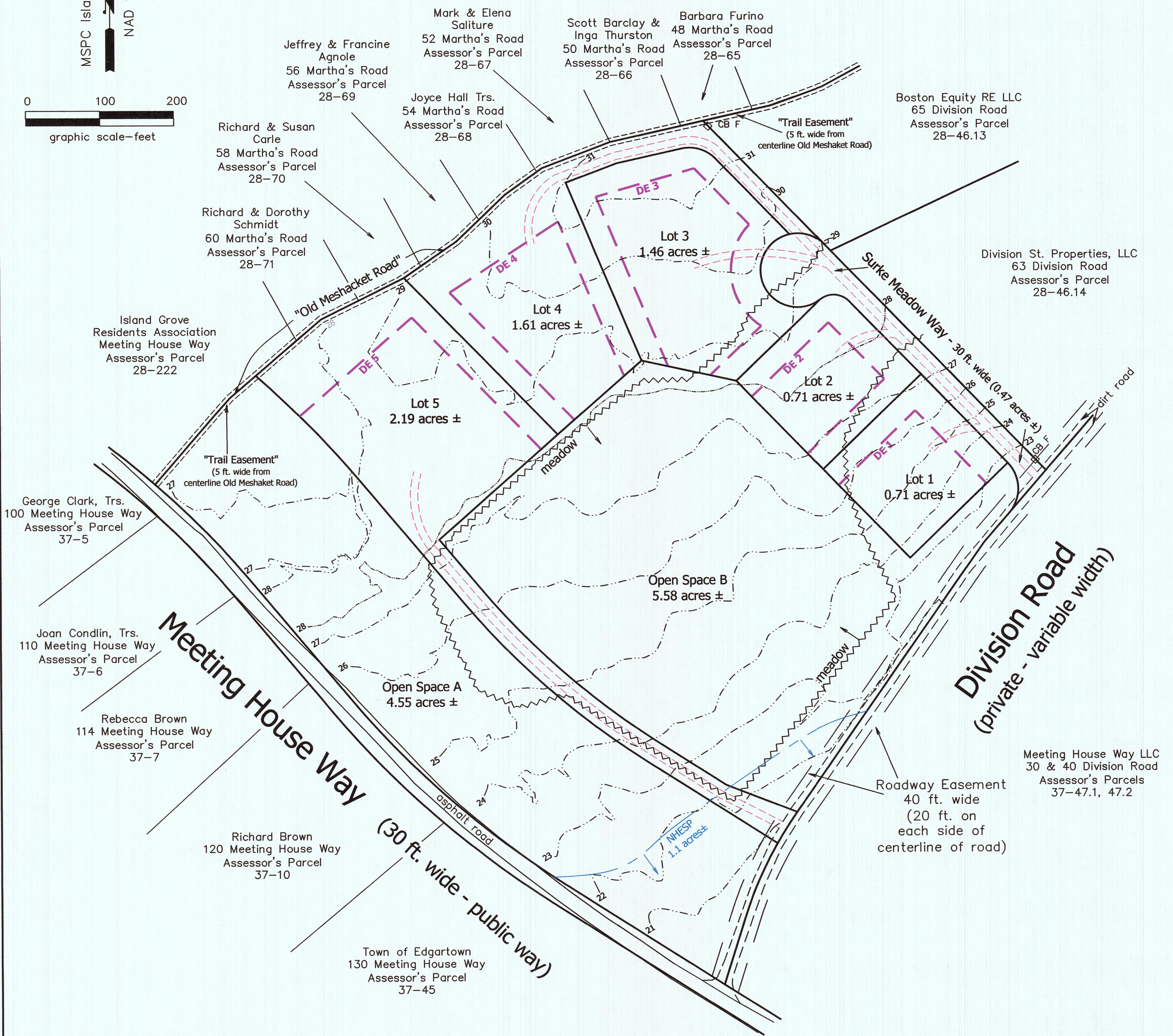
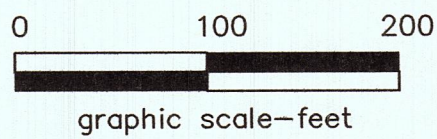


MSPC Island Zone
NAD 1983



Notes:

1. The property that is the subject of this subdivision of land is located at 35 Division Road, Edgartown Assessor's Parcel 37-46, 17.28 acres ±.
2. The property is located in the R20 Zoning District. Minimum lot size = 21,780 s.f. (0.50 acres), minimum setbacks = 30 ft. front, 10 ft. side & rear.
3. Perimeter lot area = 17.28 acres
Open Space Lots A & B = 10.13 acres
Open Space = 59% (not including open space within lots but outside of development envelopes)
4. CB F = concrete bound found
---30--- = topographic contours based on NAVD88 datum
DE = development envelope
5. All lots will be served by town sewer and each lot will be served by it's own on-site well.
6. The traveled way within Surke Meadow Way will be constructed of compacted hardener or R.A.P. material, and not be paved with asphalt. The traveled way will be 12 feet wide with 3 foot loamed and seed shoulders and with turnouts for adequate passing of 2 vehicles.

**"Surke Meadow"
Overlay Plan
Edgartown, Mass.**

Prepared For
**ADEC Meeting House Way
Real Estate, LLC**

Scale: 1" = 100' February 21, 2023

Schofield, Barbini & Hoehn Inc.
Land Surveying & Civil Engineering

12 Surveyor's Lane, Box 339
Vineyard Haven, Mass.
508-693-2781
www.sbhinc.net
MV 12438

