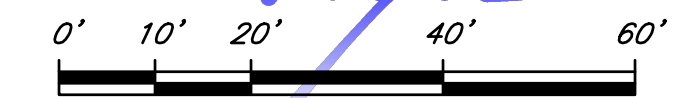


# Schematic Site Plan in WEST TISBURY, MASS.

Hayes Engineering, Inc.  
Civil Engineers & Land Surveyors  
603 Salem Street  
Wakefield, MA 01880

Telephone: 781.246.2800  
Facsimile: 781.246.7596  
www.hayeseng.com

Scale: 1" = 20'

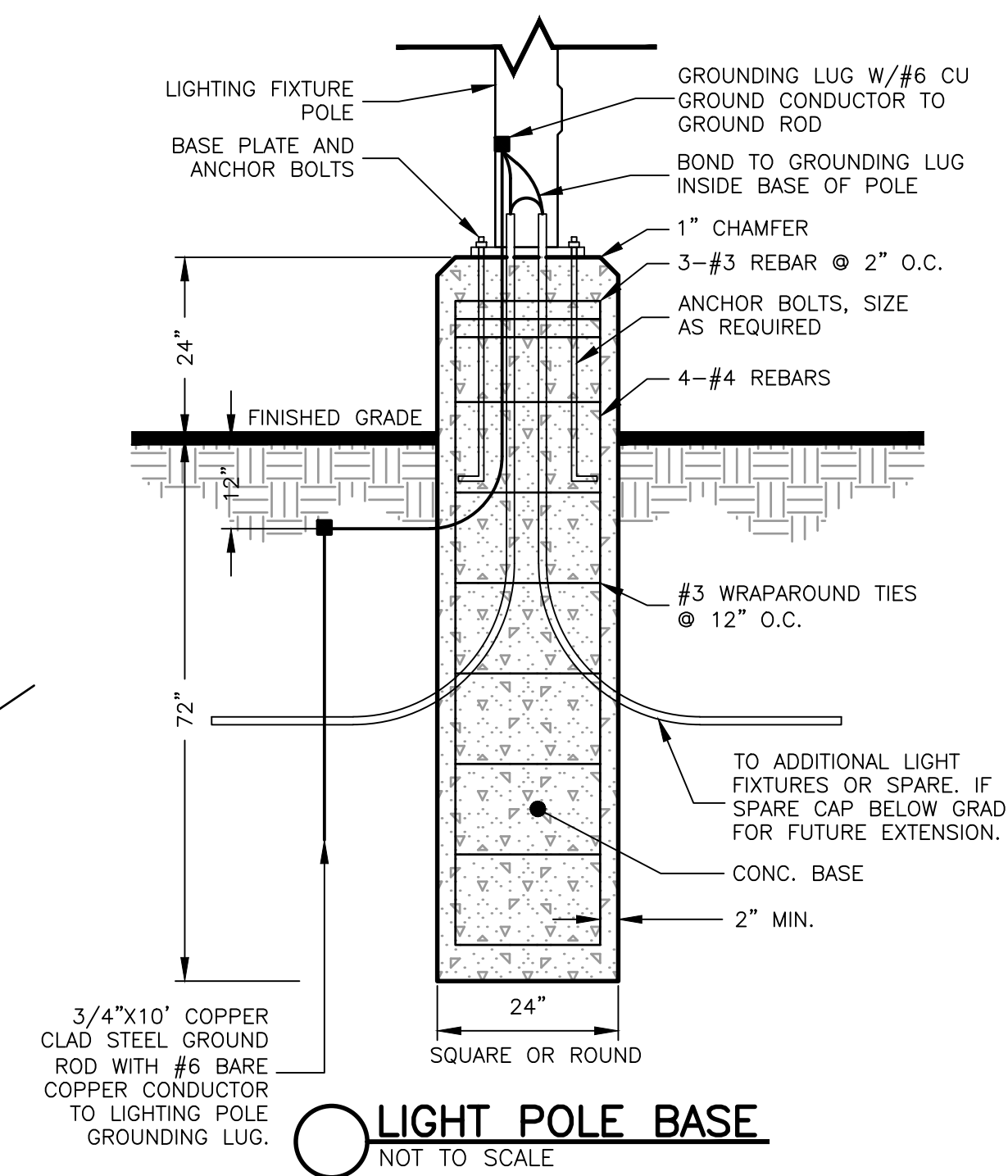


June 29, 2020  
Revised July 21, 2020

## Sheet 3 of 4 - Lighting Plan

### GENERAL NOTES:

- PROPERTY LINE INFORMATION DEPICTED ON THIS PLAN IS A COMPILATION OF RECORD PLAN AND DEED INFORMATION AND A NON-RECORD PLAN TITLED, "SKETCH PARKING PLAN" BY VINEYARD LAND SURVEYING & ENGINEERING, INC. DATED OCTOBER 10, 2019 AND IS NOT THE RESULT OF AN ACTUAL FIELD SURVEY BY HAYES ENGINEERING, INC. BOUNDARY INFORMATION DEPICTED HEREIN IS APPROXIMATE ONLY.
- BUILDING LOCATIONS DEPICTED ON THIS PLAN TAKEN FROM THE ABOVE RECORD PLANS AND MASSGIS 2-D LIDAR BUILDING LOCATIONS AND ARE NOT THE RESULT OF AN ACTUAL FIELD SURVEY BY HAYES ENGINEERING, INC.
- THE PURPOSE OF THIS PLAN IS TO IDENTIFY THE EXTENTS OF THE PROPOSED PARKING, LANDSCAPING AND LIGHTING FOR THE PROPERTY.
- THE PERMANENT STRUCTURES DEPICTED HEREIN ARE APPROXIMATELY LOCATED ON THE GROUND AS SHOWN. THEY EITHER CONFORMED TO THE SETBACK REQUIREMENTS OF THE LOCAL ZONING ORDINANCES AT THE TIME OF CONSTRUCTION, OR ARE EXEMPT FROM VIOLATION ENFORCEMENT ACTION UNDER M.G.L., TITLE VII, CHAPTER 40A, SECTION 7.
- THE WAY BISECTING THE PARCEL IS TO THE BENEFIT OF THE LOCUS PARCEL ONLY PER A LEGAL OPINION PROVIDED BY THE PROPERTY OWNER'S COUNSEL STATING THAT NO OTHER PARTY OF RECORD HAS RIGHTS IN THE WAY.



### D-Series Size 1 LED Area Luminaire

**Specifications**

EPA:	1.01 ft <sup>2</sup> (0.09m <sup>2</sup> )
Length:	33" (83.8cm)
Width:	13" (33.0cm)
Height H1:	7-1/2" (19.0cm)
Height H2:	3-1/2" (9.1cm)
Weight (max):	27 lbs (12.2kg)

**○ A LITHONIA DSX1-LED LIGHT FIXTURE**  
NOT TO SCALE

### KAXW LED Wall Luminaire

**Specifications**

Length:	14" (35.6cm)
Width:	12" (30.5cm)
Height:	5" (12.7cm)
Weight (max):	19.7 lbs (8.9kg)

**○ B LITHONIA KAXW-LED WALL PACK**  
NOT TO SCALE

### PHOTOMETRIC LEGEND:

DENOTES ISOFOOTCANDLE LEVEL 1.9

DENOTES ISOFOOTCANDLE LINE

### GENERAL LIGHTING NOTES:

ILLUMINANCE VALUES SHOWN ARE PROPOSED MAINTAINED HORIZONTAL FOOTCANDLES ON LEVEL GRADE.

PHOTOMETRIC ANALYSIS DOES NOT CONSIDER ANY EXISTING ILLUMINANCE, SHADOW OR REFLECTED LIGHT FROM EXISTING OR PROPOSED OBJECTS AND GRADE DIFFERENCES.

HORIZONTAL ILLUMINANCE LEVELS SHOWN ARE CALCULATED FROM DATA PROVIDED FROM MANUFACTURER IN ACCORDANCE WITH THE ILLUMINATING ENGINEERING SOCIETY APPROVED METHODS.

ACTUAL ILLUMINANCE LEVELS MAY DIFFER DUE TO SEVERAL FACTORS SUCH AS LAMP LUMEN DEPRECIATION, LUMINAIRE DIRT DEPRECIATION, LUMINAIRE SURFACE DEPRECIATION, AND EQUIPMENT OPERATING FACTOR.

CONTRACTOR TO VERIFY ALL UTILITIES BEFORE CONSTRUCTION.

### LUMINAIRE SCHEDULE

CALLOUT	SYMBOL	DESCRIPTION	VOLTS	QUANTITY
A	○	DSX1 LED P1 30K T3M MVOLT, 12' H	120V 1P 2W	3
B	○	KAXW LED, PERFORMANCE PACKAGE 3, 5000K, TYPE 4, 120-277V, 12' H	120V 1P 2W	4