

Perimeter Area = 54.3 ac - 0.8 ac Roadway Easement =
53.5 ac of effective perimeter area

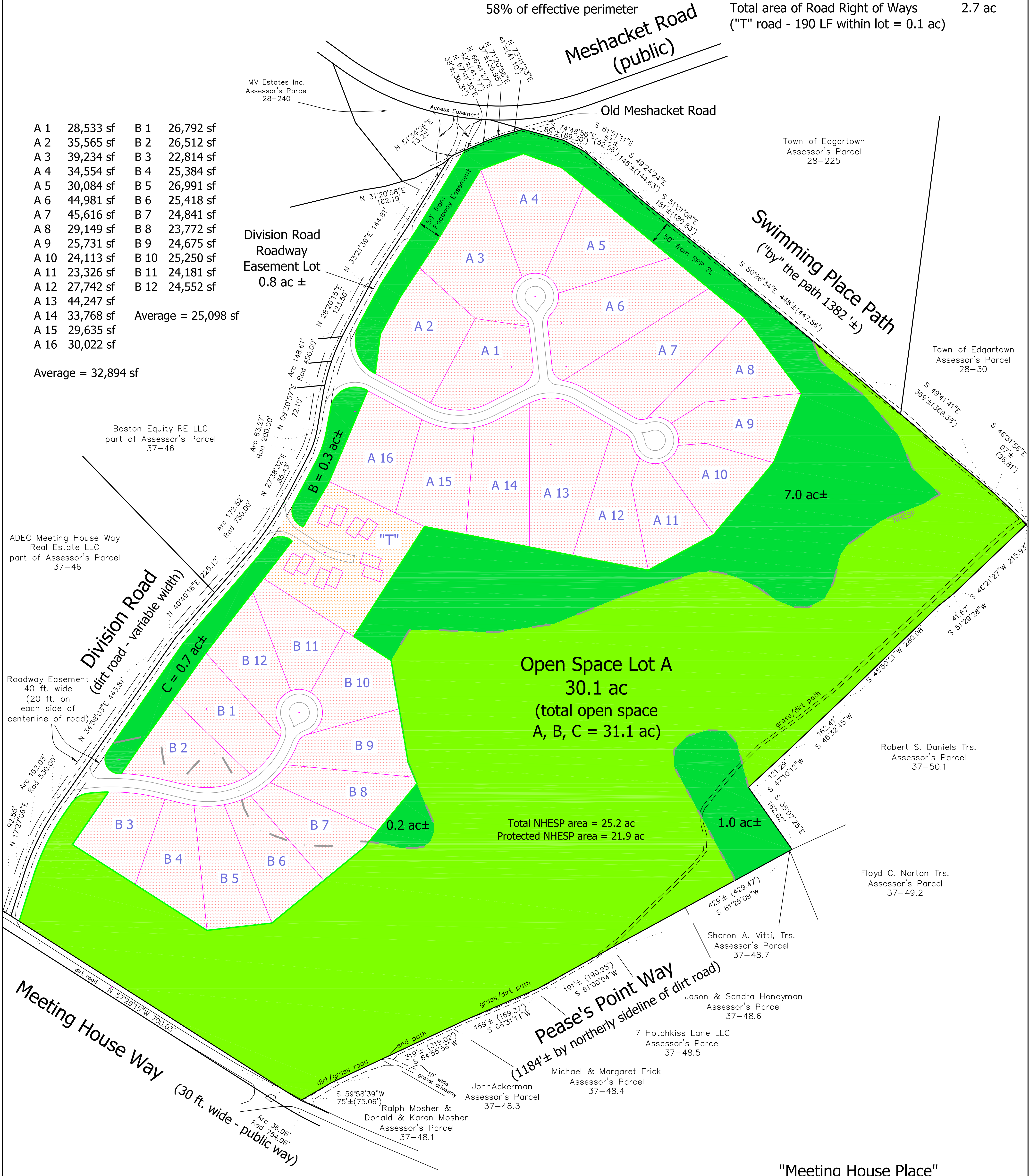
NHESP
 NHESP Priority Habitat Area 25.2 ac
 Protected NHESP Priority Habitat Area 21.9 ac
 NHESP Priority Habitat Area subject to potential development 3.3 ac (less than 5 ac take threshold)

Open Space
 NHESP protected open space 21.9 ac
 Association protected open space 9.2 ac
 Total open space 31.1 ac
 58% of effective perimeter

Area Summary

Open Space 31.1 ac
 "A" lots (32,894 sf± average) 12.1 ac
 "T" lot 1.4 ac
 "B" lots (25,098 sf± average) 6.9 ac
 Total area of lots 20.4 ac
 Road Right of Way
 "A" way - 1,260 LF 1.2 ac
 "B" way - 740 LF 0.7 ac
 Division Rd. Roadway Easement Lot 0.8 ac
 Total area of Road Right of Ways ("T" road - 190 LF within lot = 0.1 ac) 2.7 ac

A 1	28,533 sf	B 1	26,792 sf
A 2	35,565 sf	B 2	26,512 sf
A 3	39,234 sf	B 3	22,814 sf
A 4	34,554 sf	B 4	25,384 sf
A 5	30,084 sf	B 5	26,991 sf
A 6	44,981 sf	B 6	25,418 sf
A 7	45,616 sf	B 7	24,841 sf
A 8	29,149 sf	B 8	23,772 sf
A 9	25,731 sf	B 9	24,675 sf
A 10	24,113 sf	B 10	25,250 sf
A 11	23,326 sf	B 11	24,181 sf
A 12	27,742 sf	B 12	24,552 sf
A 13	44,247 sf		
A 14	33,768 sf	Average =	25,098 sf
A 15	29,635 sf		
A 16	30,022 sf		
Average = 32,894 sf			



Notes:

- The address of the property that is the subject of this subdivision is 139 Meeting House Way, Assessor's Parcel 37-47, 54.3 acres ±.
- CB F = concrete bound found
SB F = stone bound found
- | | |
|---|-------------------------------------|
| | = NHESP Protected Open Space Parcel |
| | = Association Open Space Parcel |

"Meeting House Place"

Plan of Land in Edgartown, Mass.

Prepared For
Meeting House Way, LLC
 Scale: 1" = 100' June 22, 2019

Schofield, Barbini & Hoehn Inc.
 Land Surveying & Civil Engineering
 12 Surveyor's Lane, Box 339
 Vineyard Haven, Mass.
 508-693-2781
 www.sbhinc.net
 MV 9969