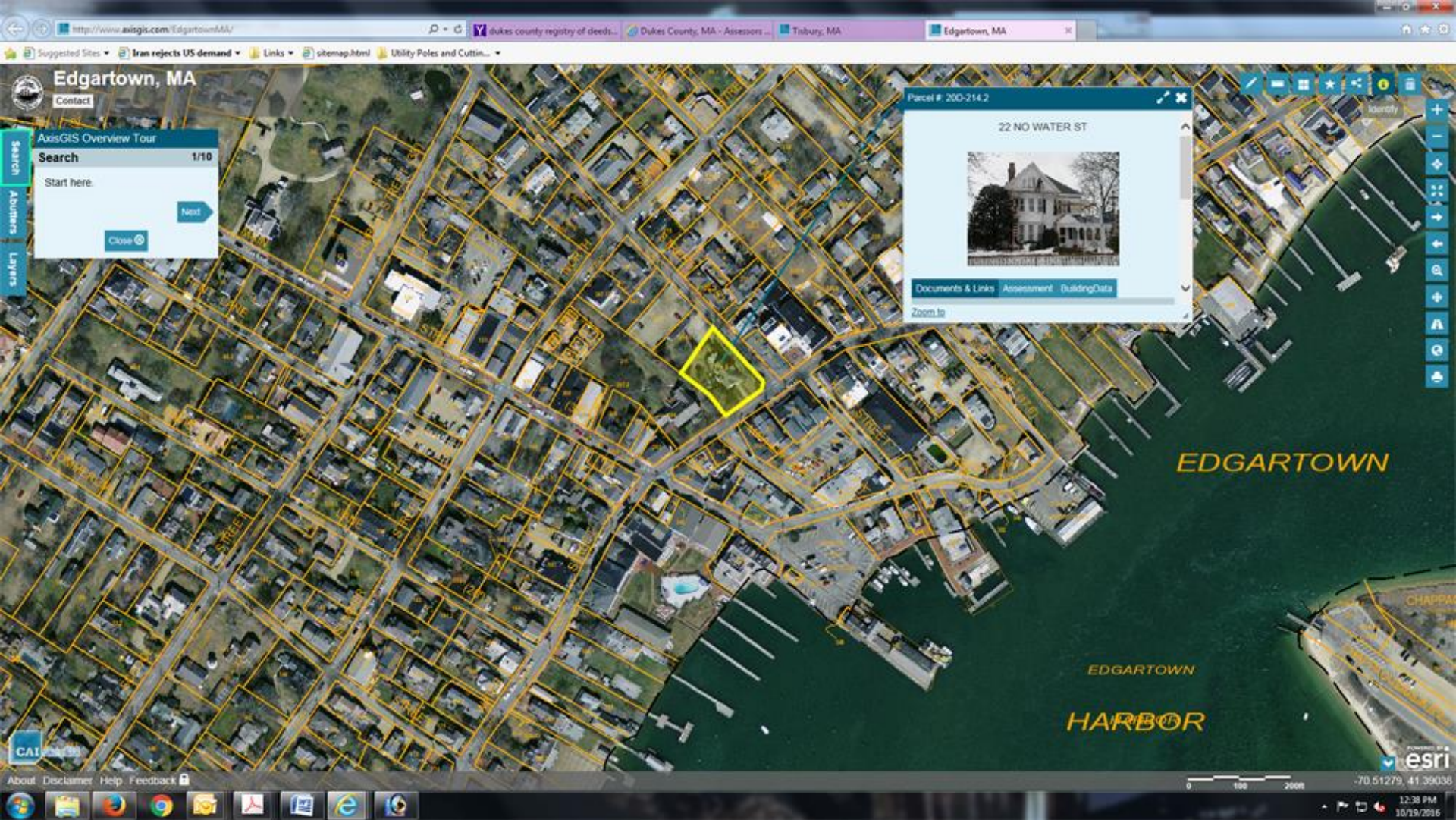
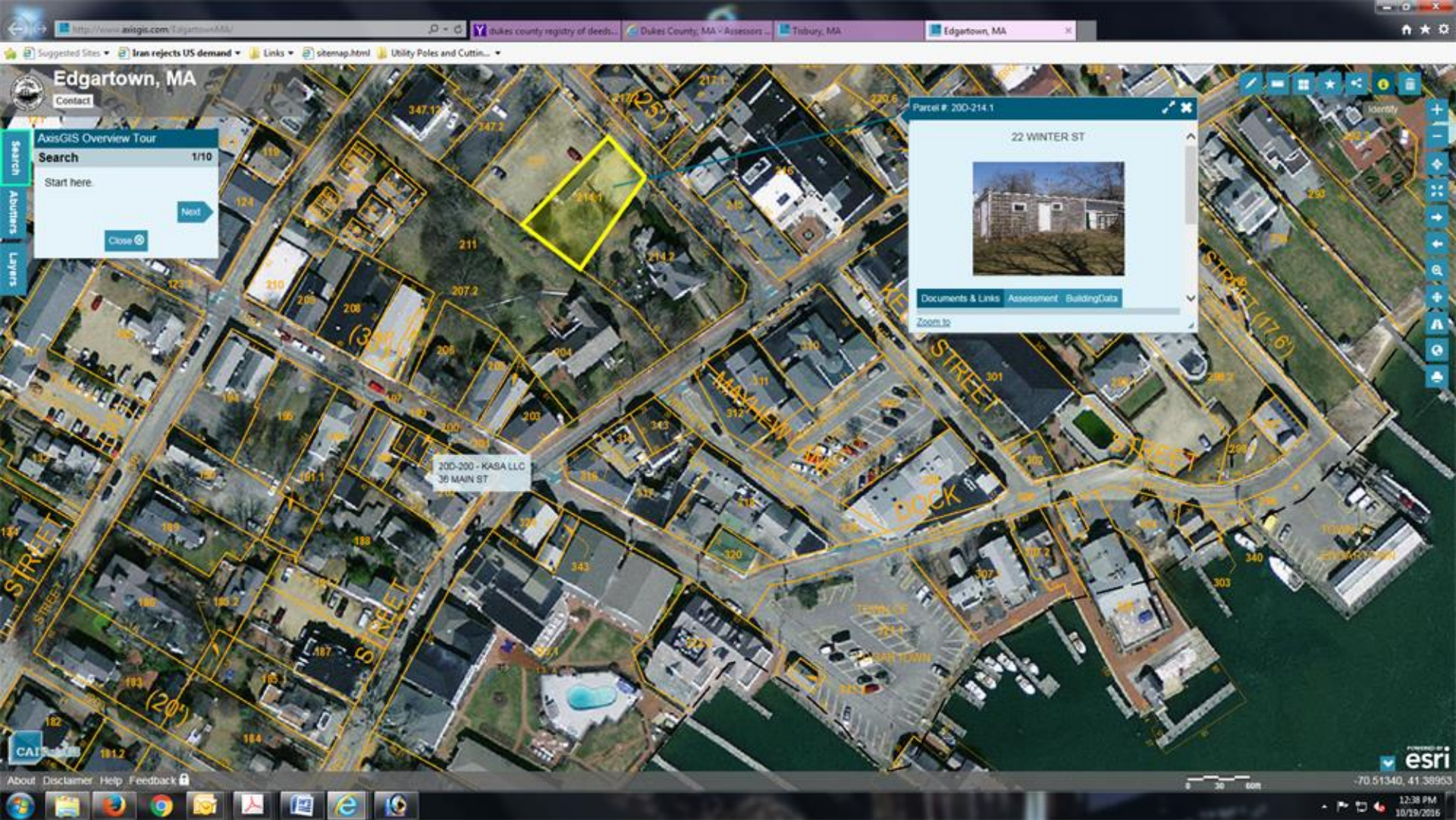


# DRI 669 Sydney Hotel – Edgartown Locus



# DRI 669 Sydney Hotel Expansion – Edgartown Locus



# Inns Converted to Private Residences 2004-2016

INNS CONVERTED TO PRIVATE RESIDENCES IN EDGARTOWN  
2004 - 2015  
94 ROOMS TOTAL





LOCUS

N. Summer St

Main St

Mayhew Ln



Existing Site Imagery  
SUBJECTS

# The Sydney Hotel

22 Winter Street  
Edgartown • Massachusetts

PATRICK AHEARN  
ARCHITECT

# Corner of North Water and Winter Street L'étoile restaurant & Nevin Square



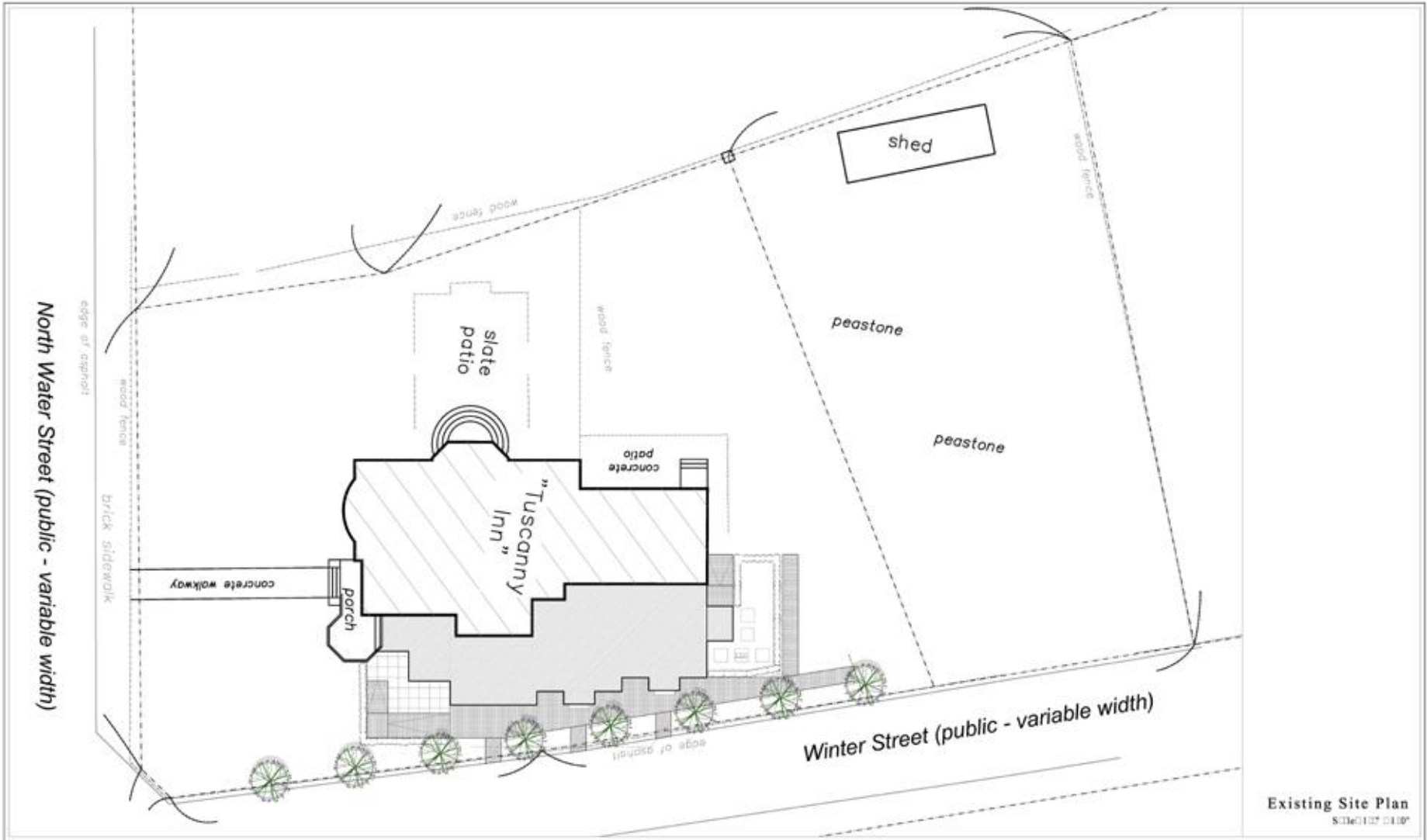
# Winter Street: Sydney/L'etoile & Project Site



# Winter Street: Nevin Square & M.V.H.P.T. parking lot







Existing Site Plan  
 Scale: 1/8" = 1'-0"

**The Sydney Hotel**  
 22 Winter Street  
 Edgartown • Massachusetts

**PATRICK AHEARN**  
 ARCHITECT

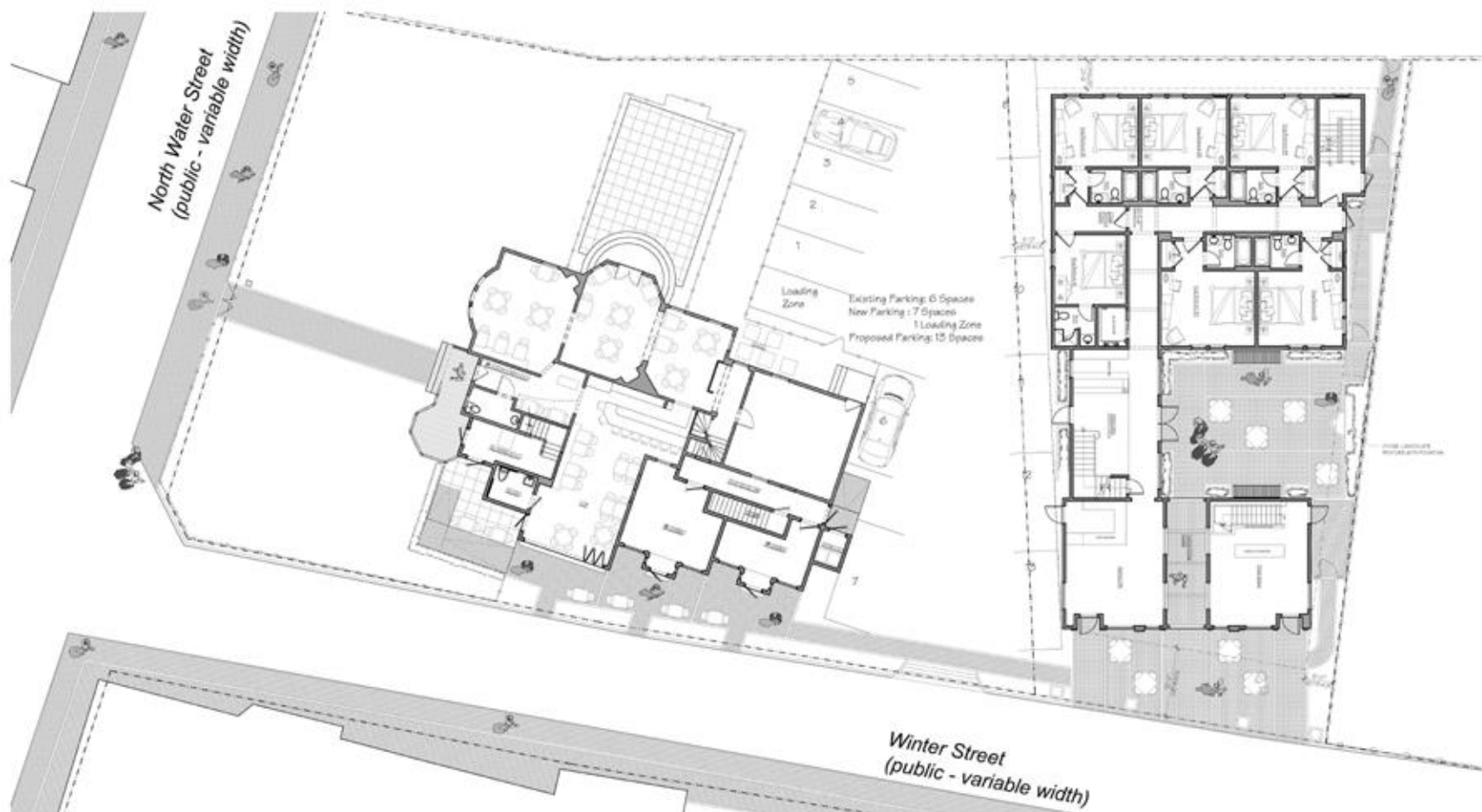


Proposed Site Plan  
Scale: 1/8" = 1'-0"



**The Sydney Hotel**  
22 Winter Street  
Edgartown • Massachusetts

**PATRICK AHEARN**  
ARCHITECT



Existing Parking: 6 Spaces  
 New Parking: 7 Spaces  
 1 Loading Zone  
 Proposed Parking: 13 Spaces

North Water Street  
 (public - variable width)

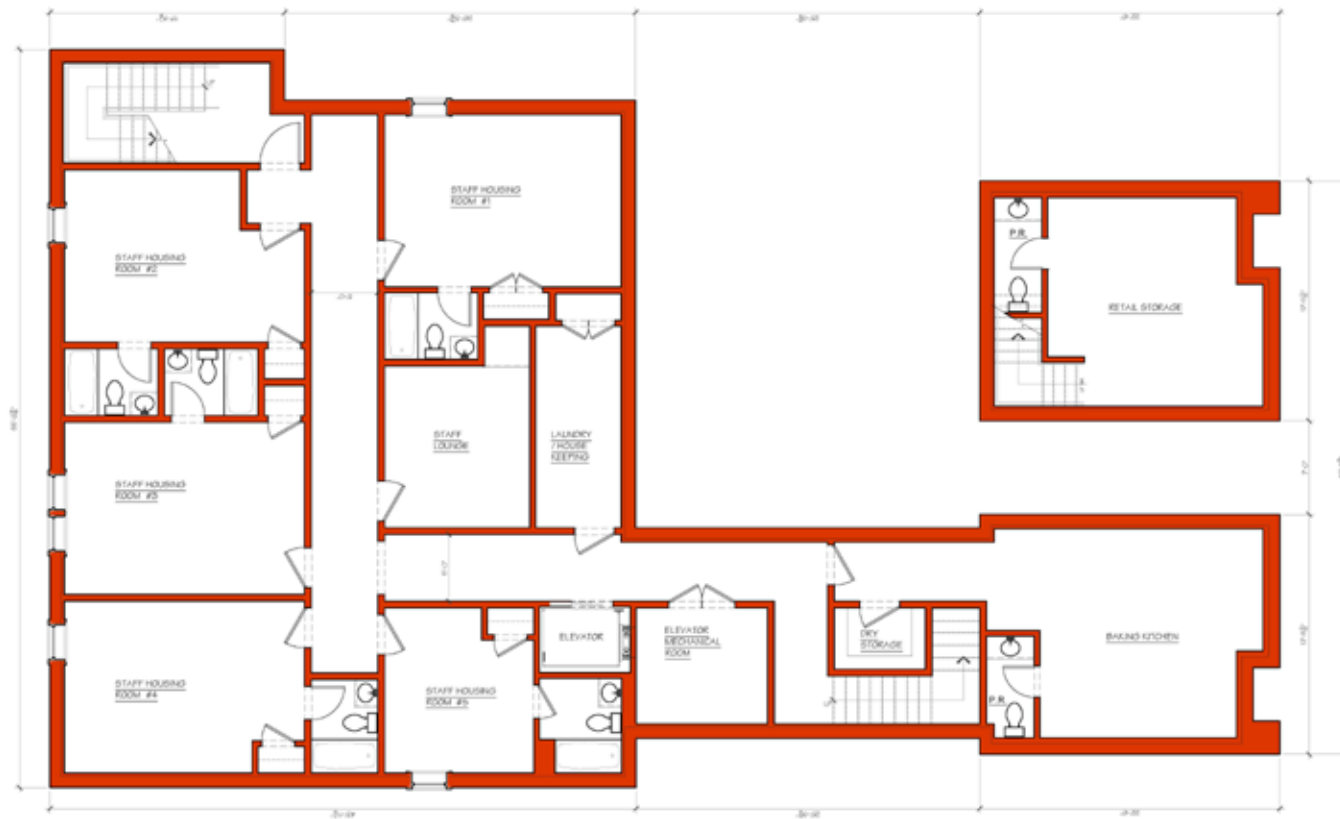
Winter Street  
 (public - variable width)

Proposed Site Plan  
 Scale: 1/8" = 1'-0"



The Sydney Hotel  
 22 Winter Street  
 Edgartown • Massachusetts

PATRICK AHEARN  
 ARCHITECT



*Winter Street (public - variable width)*

Proposed Basement Floor Plan  
Scale: 1/4" = 1'-0"



The Sydney Hotel  
22 Winter Street  
Edgartown • Massachusetts

PATRICK AHEARN  
ARCHITECT



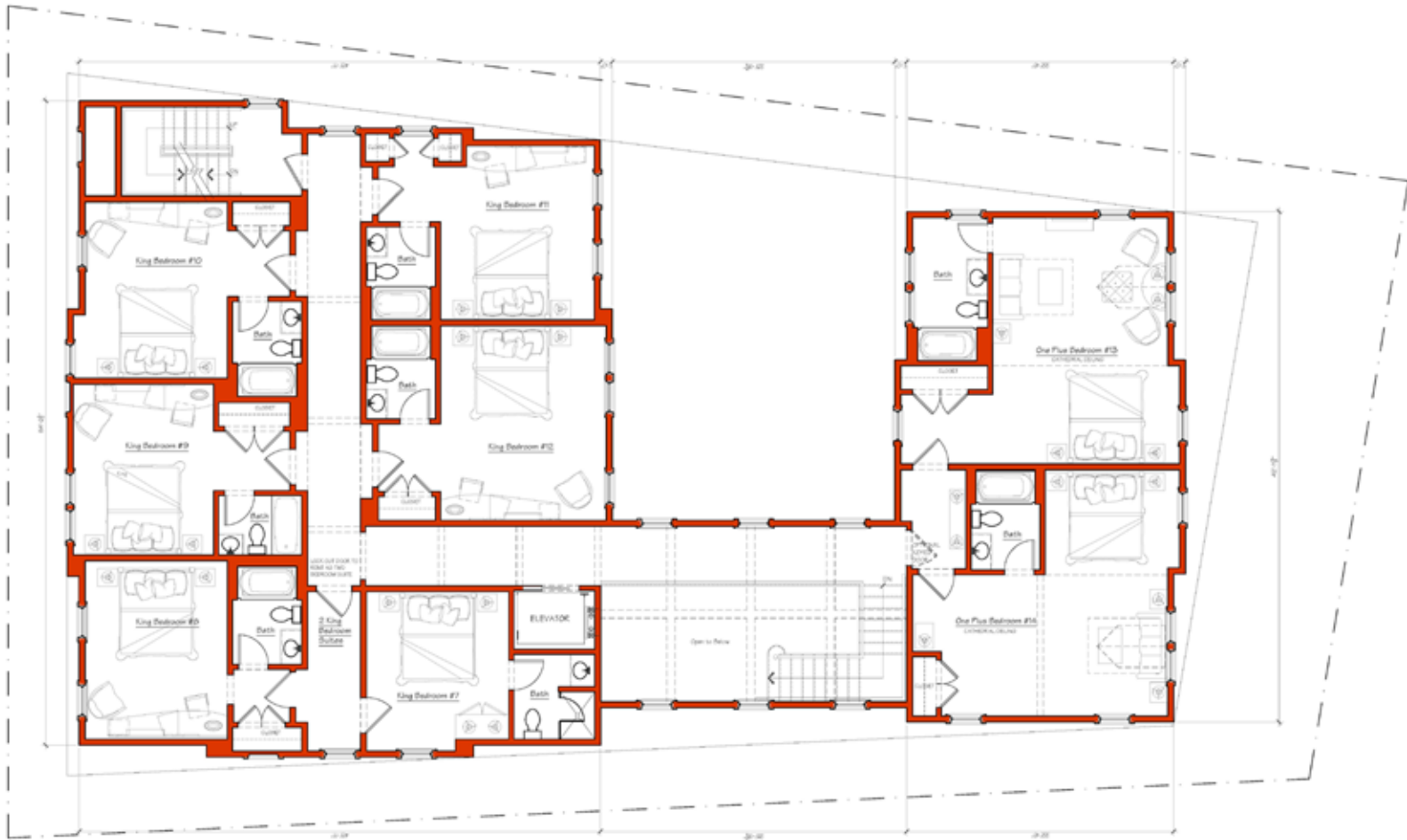
*Winter Street  
(public - variable width)*

Proposed First Floor Plan  
Scale: 1/4" = 1'-0"



The Sydney Hotel  
22 Winter Street  
Edgartown • Massachusetts

PATRICK AHEARN  
ARCHITECT



**Proposed Second Floor Plan**  
Scale: 1/4" = 1'-0"



**The Sydney Hotel**  
22 Winter Street  
Edgartown • Massachusetts

**PATRICK AHEARN**  
ARCHITECT





Proposed Winter Street Elevation  
Scale: 1/4" = 1'-0"

The Sydney Hotel  
22 Winter Street  
Edgartown • Massachusetts







**The Sydney Hotel**  
22 Winter Street  
Edgartown • Massachusetts

**PATRICK AHEARN**  
ARCHITECT



The Sydney Hotel  
22 Winter Street  
Edgartown • Massachusetts



PATRICK AHEARN  
ARCHITECT



Proposed Rear Elevation  
Scale: 1/4" = 1'-0"



The Sydney Hotel  
22 Winter Street  
Edgartown • Massachusetts

PATRICK AHEARN  
ARCHITECT





Proposed Courtyard Back Elevation  
Scale: 1/4" = 1'-0"



The Sydney Hotel  
22 Winter Street  
Edgartown • Massachusetts

PATRICK AHEARN  
ARCHITECT



The Sydney Hotel  
22 Winter Street  
Edgartown • Massachusetts

PATRICK AHEARN  
ARCHITECT



Proposed Site Plan  
Scale: 1/8" = 1'-0"



**The Sydney Hotel**  
22 Winter Street  
Edgartown • Massachusetts

**PATRICK AHEARN**  
ARCHITECT