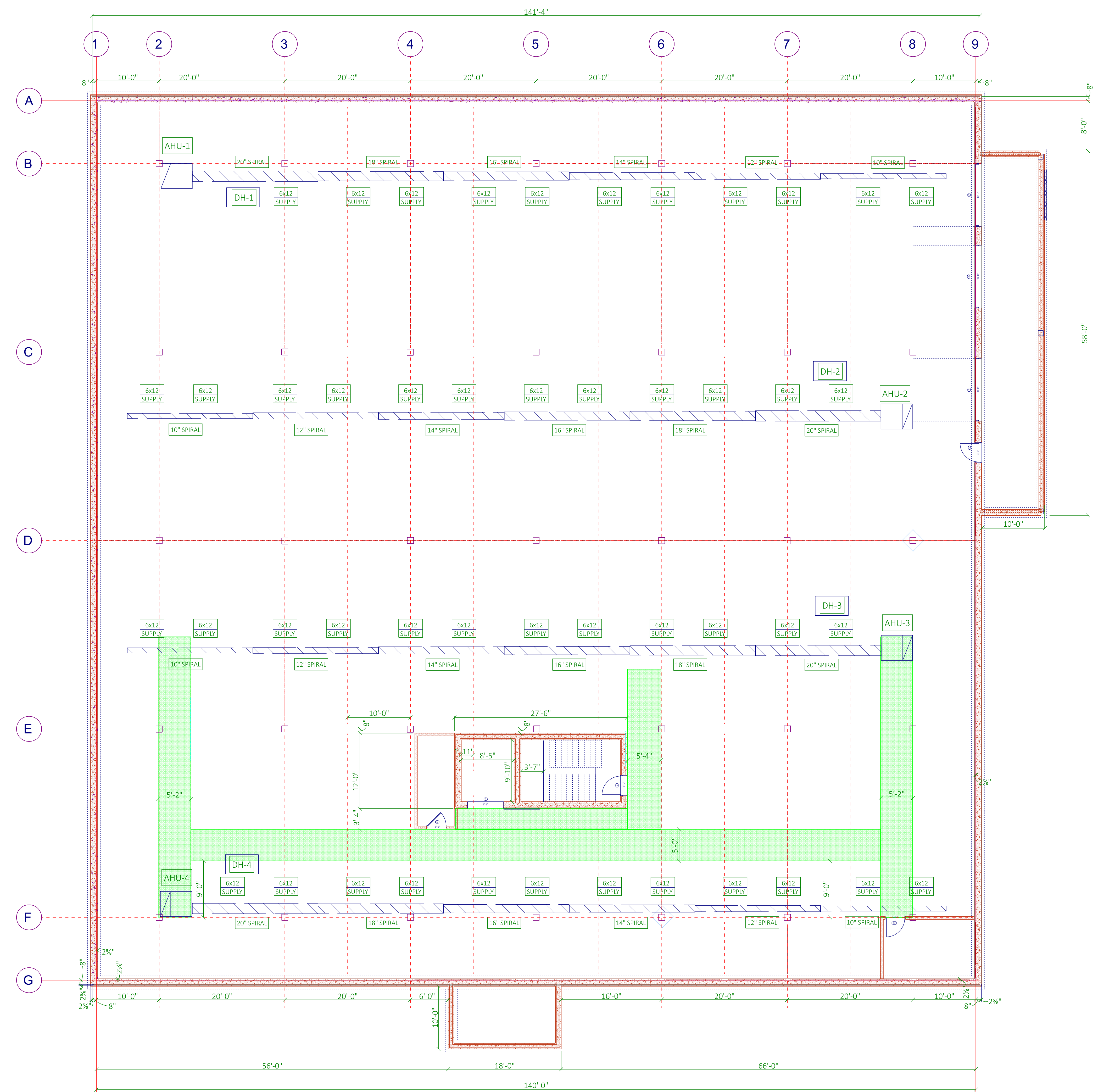


PRELIMINARY

DATE:  
DRAWN BY:

H-1



**LOWER LEVEL**

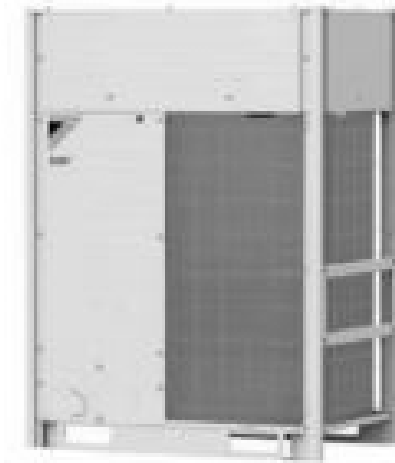
LOWER LEVEL HVAC  
SCALE: 1/8" = 1'-0"



RXLQ-TATJA, 208 / 230 V  
 RXLQ-TAYDA, 460 V  
 RXLQ-TAYCA, 575 V

Heat Pump 60 Hz

**R-410A**



**VRV**  
**Aurora Series**

**DAIKIN**

**Submital Data Sheet**  
 5.0-Ton Multi Position Air Handling Unit (w/ disconnect)  
 FXTQ60TAVJUD

**FEATURES**

- Capable of upflow, horizontal-right, horizontal-left, and downflow installation. Downflow installation requires the use of a field installed downflow accessory kit.
- Variable speed ECM motor produces nominal CFM up to 0.9" external static pressure.
- Improved auxiliary heat logic
- Designed with less than 2% air leakage when tested in accordance with ASHRAE 193.
- Designed with a Smart Frame chassis for product durability.
- All-aluminum coil
- Precise refrigerant modulation from a 2000 pulse electronic expansion valve
- Cool, Dry, Auto, Heat, and Fan operation modes
- Auto Fan Speed automatically adjusts fan speed in relation to space temperature and set point
- Optional slide-in electric heat available
- Factory mounted disconnect switch
- Configurable Dry mode

**BENEFITS**

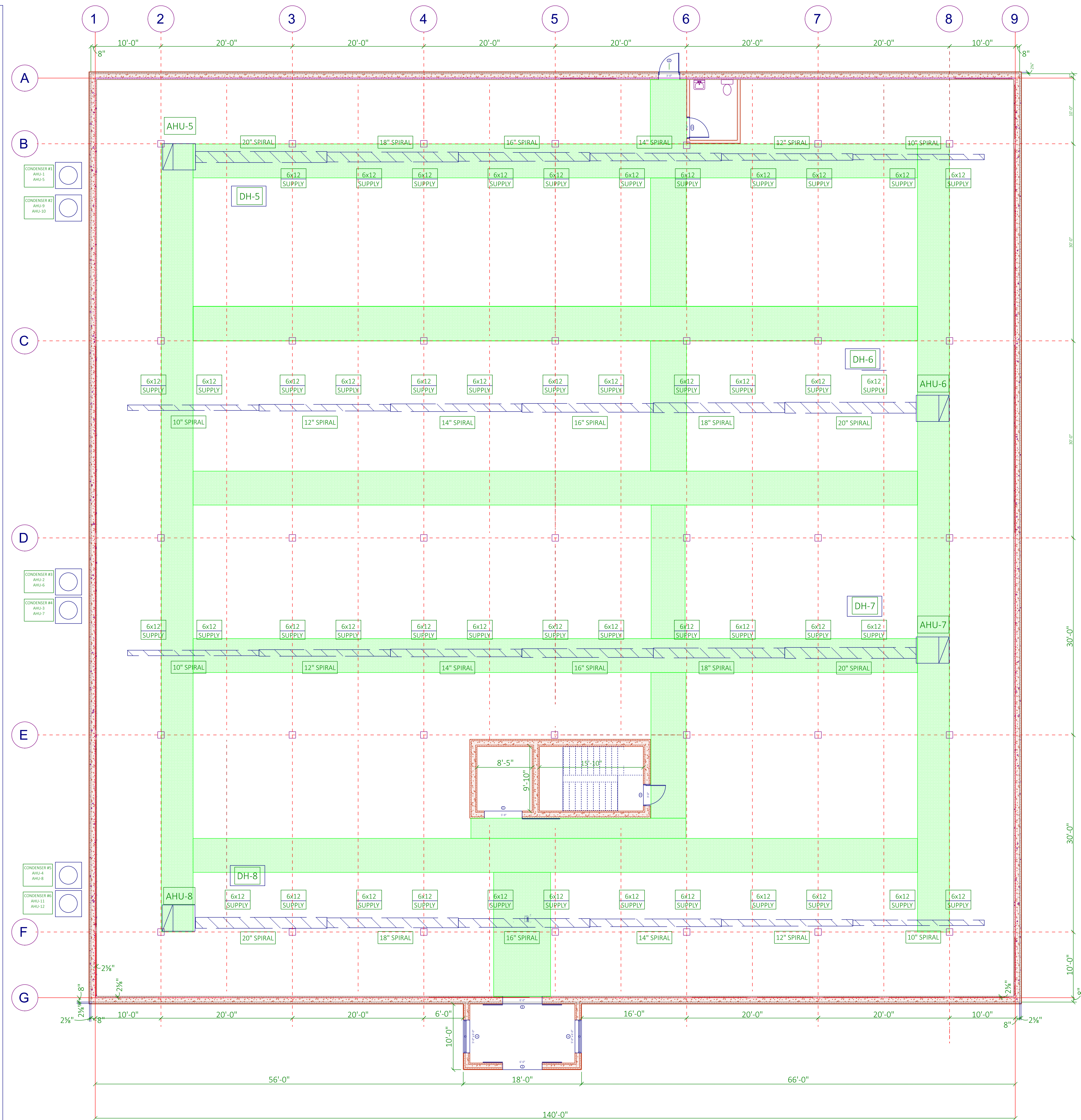
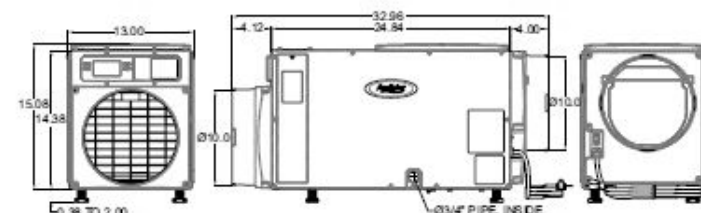
- Optimized fan speed from Auto Fan Speed logic
- Reduced auxiliary heat dead band
- Configurable electric heat on/off temperature settings
- Compact footprint fits tight spaces



**Aprilaire**

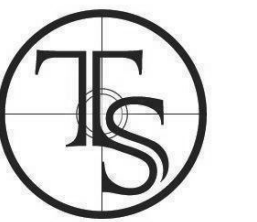
**SPECIFICATION SHEET**  
 DEHUMIDIFIER  
 MODEL 1860

PRODUCT SPECIFICATIONS	
Capacity*	80 gpd
Energy factor**	2.2 LWR/h
Airflow @ varying E.S.P. (external static pressure - dry coil)	
8.0" w.c.	260 CFM
8.7" w.c.	230 CFM
9.4" w.c.	200 CFM
Voltage, Phase, Frequency	120V, 1, 60 Hz
Current draw**	8.0 A
Noise	54 dBA ducted
Dimensions (cabinet)	Width: 12.5" cabinet Height: 18.5" cabinet Length: 23.5" cabinet
Weight	75 lbs
Operating conditions	Inlet air operating conditions: 50°F - 104°F, 40" dew point min. Ambient Ventilation: 80% - 100% RH, 50% - 100% RH



**MAIN LEVEL**

**MAIN FLOOR HVAC**  
 SCALE: 1/8" = 1'-0"



Trademark Services LLC  
 tsllcny.com  
 wood | concrete | steel

**MCLC FAMILY LIMITED PARTNERSHIP**  
**475 EDGARTOWN ROAD**  
**TISBURY, MA**

PARCEL: 19A-20

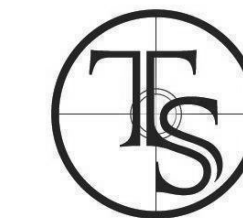
PRELIMINARY

DATE:

DRAWN BY:

H-2





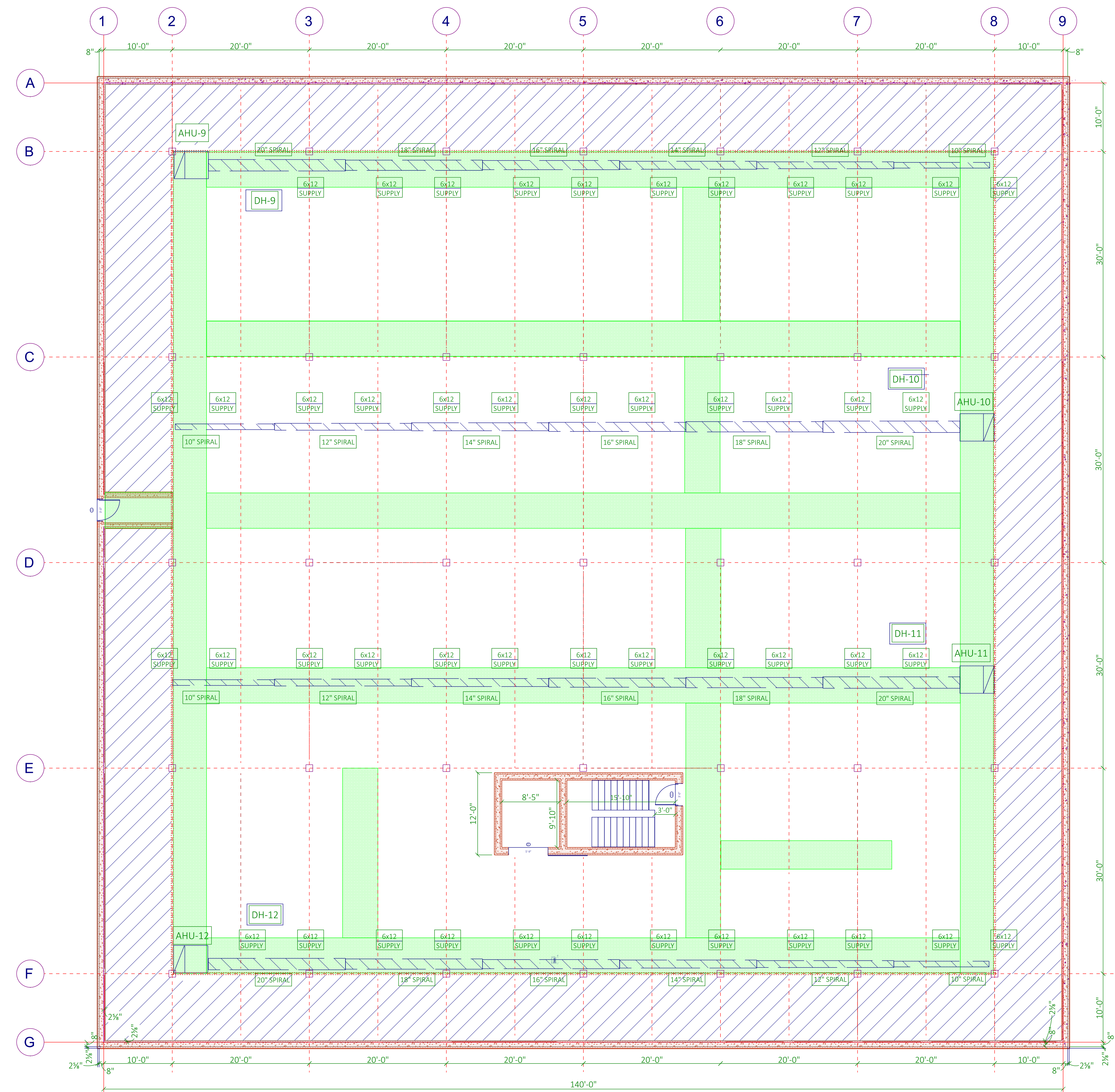
Trademark Services LLC  
tsllcny.com  
wood | concrete | steel

**MCLC FAMILY LIMITED PARTNERSHIP**  
**475 EDGARTOWN ROAD**  
**TISBURY, MA**  
**PARCEL: 19A-20**

PRELIMINARY

DATE:  
DRAWN BY:

H-3



UPPER LEVEL

UPPER LEVEL HVAC  
SCALE: 1/8" = 1'-0"