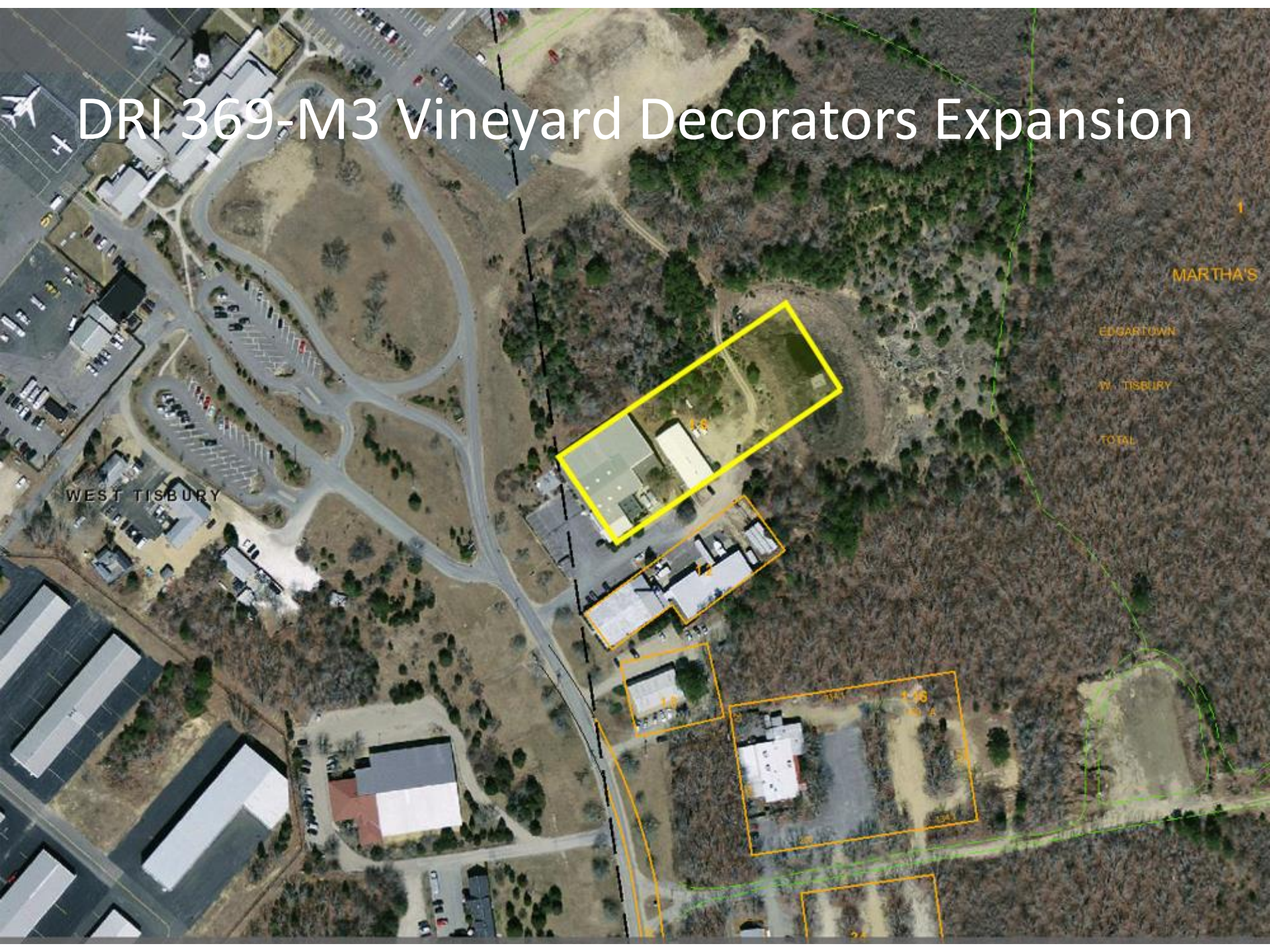


DRI 369-M3 Vineyard Decorators Expansion



WEST TISBURY

MARTHA'S

EDGARTOWN

W. TISBURY

TOTAL

1

2

3

4

5

6

DRI 369-M3 Vineyard Decorators Expansion

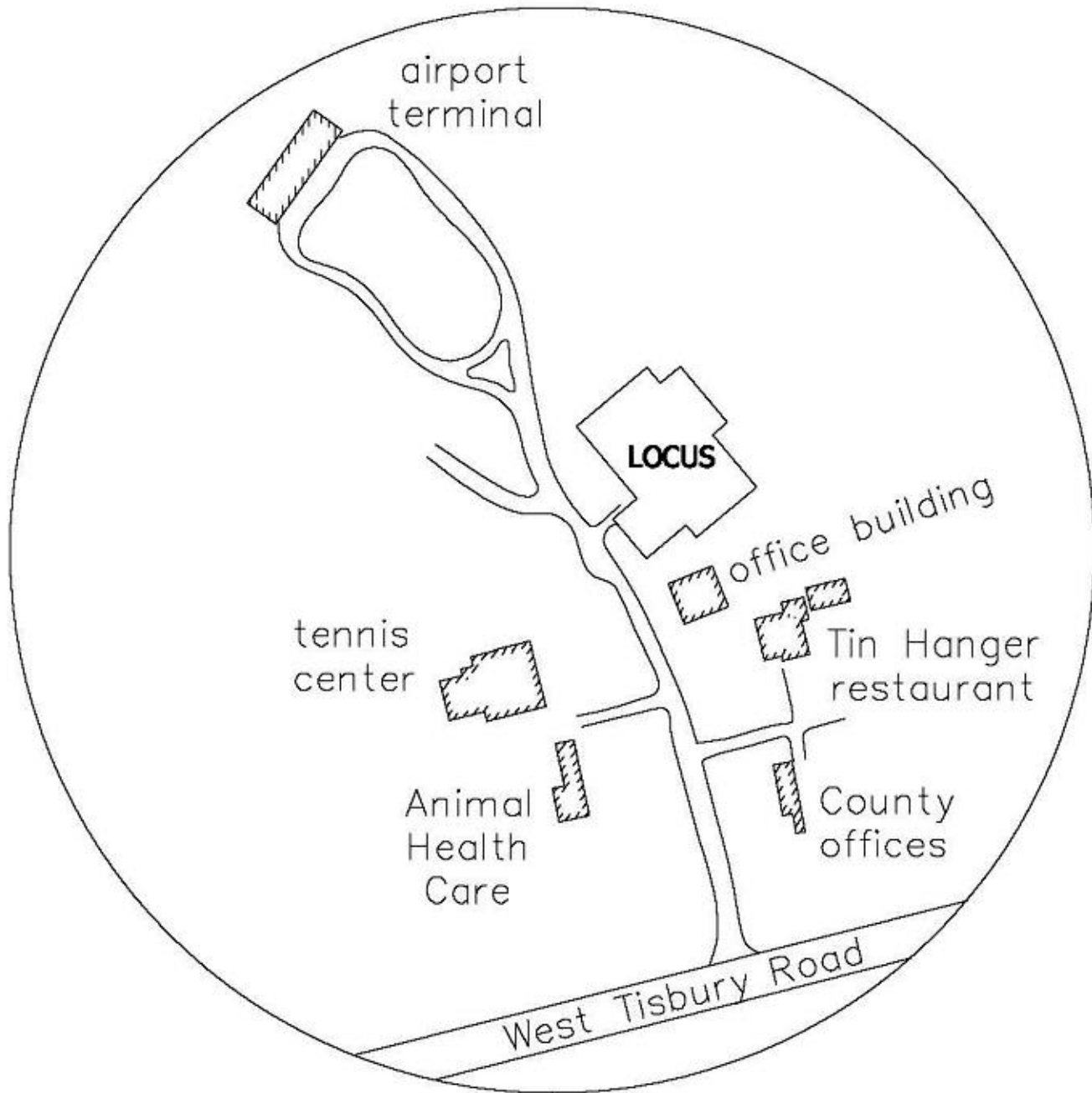


*Vineyard
Decorators*

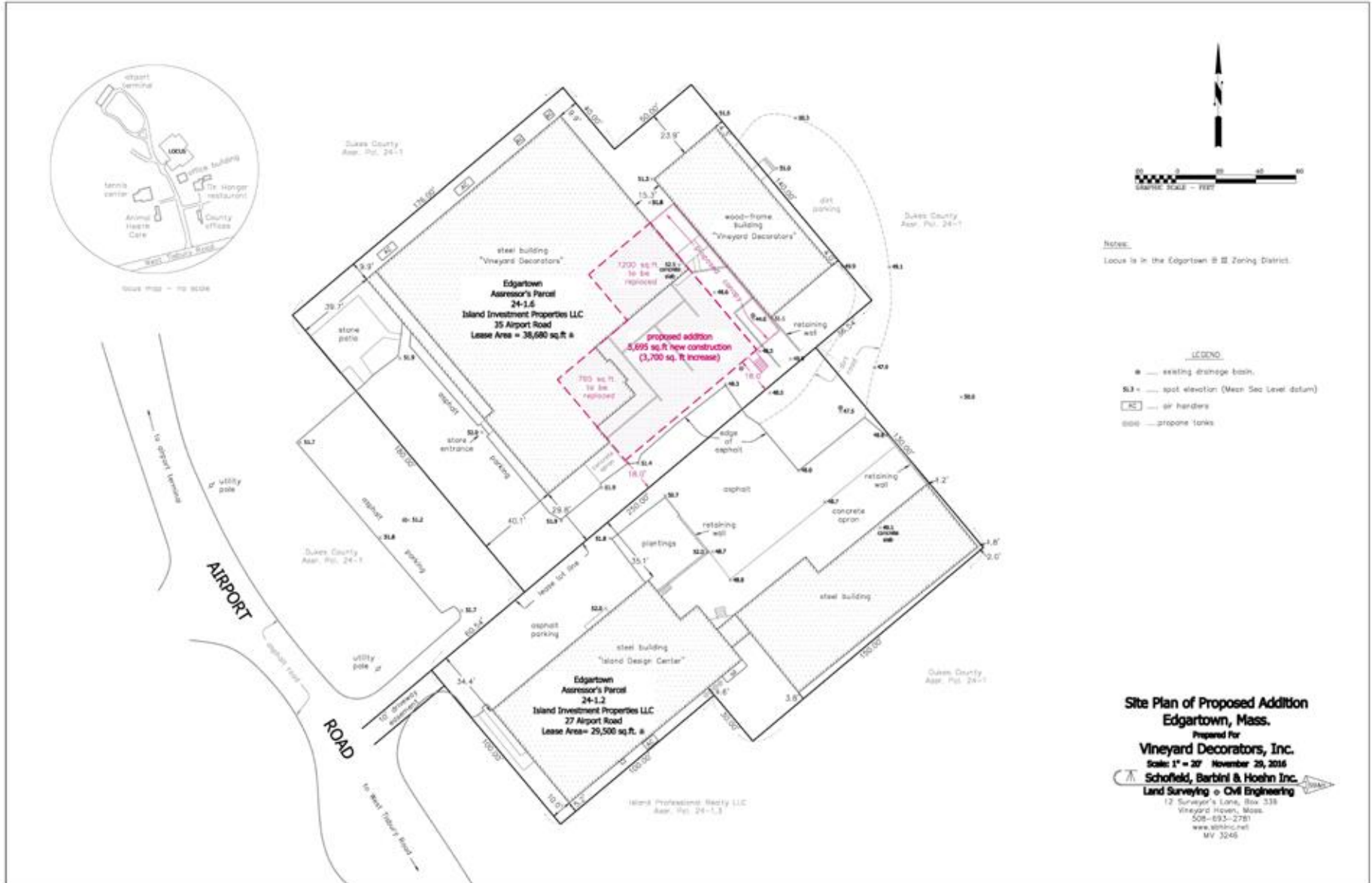


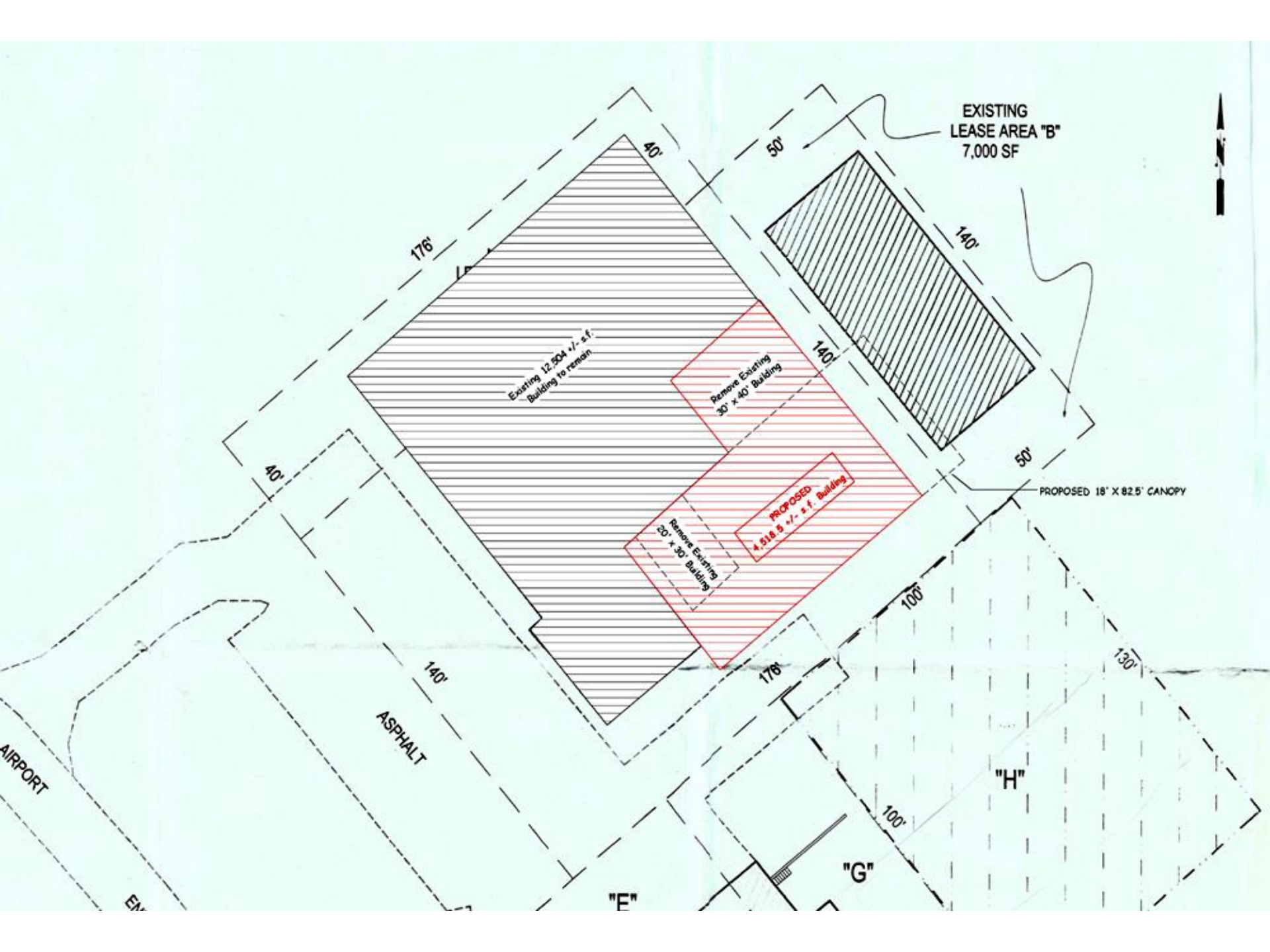






DRI 369-M3 Vineyard Decorators Expansion Site Plan





EXISTING
LEASE AREA "B"
7,000 SF

Existing 12,504 +/- s.f.
Building to remain

Remove Existing
30' x 40' Building

Remove Existing
20' x 30' Building

PROPOSED
4,518.5 +/- s.f. Building

PROPOSED 18' x 82.5' CANOPY



AIRPORT

ASPHALT

"E"

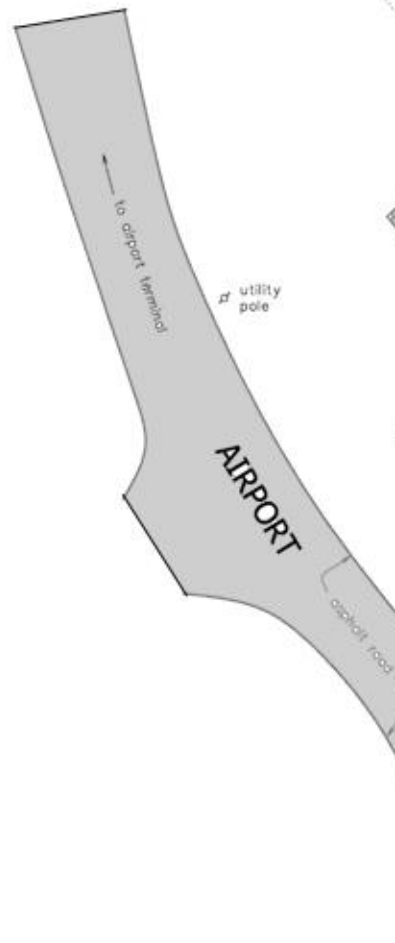
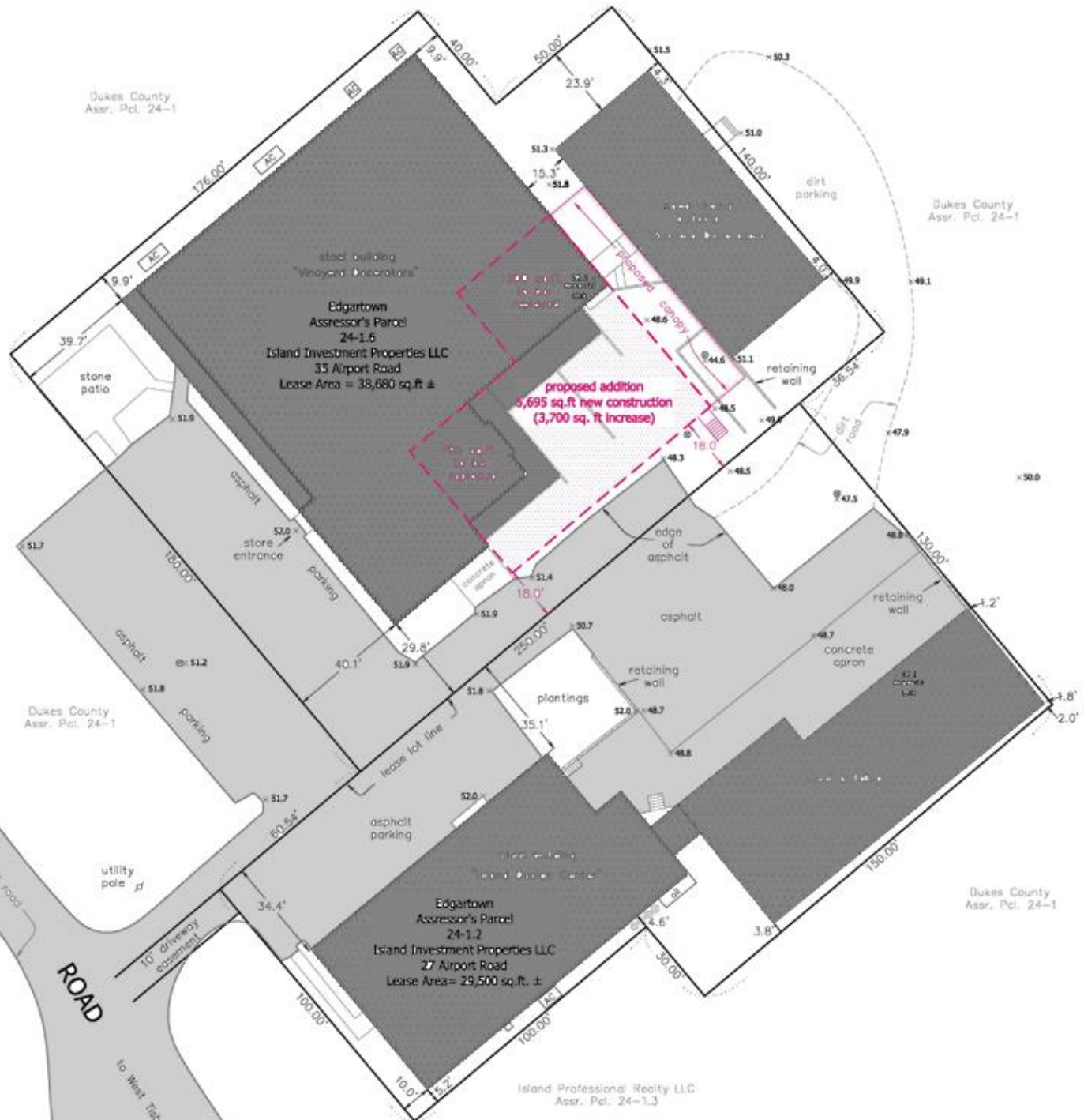
"G"

"H"

EN

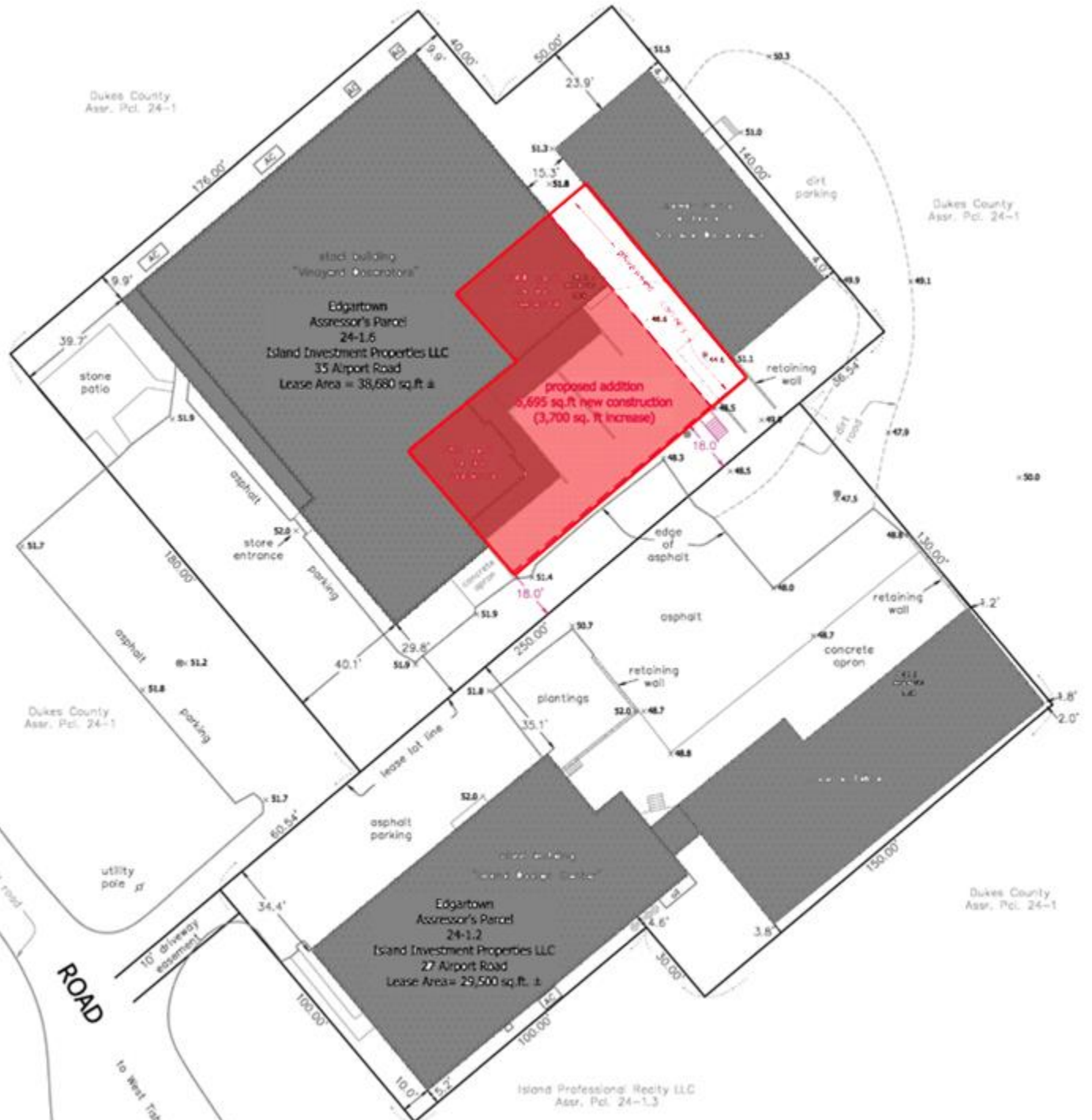


locus map - no scale





locus map - no scale



AIRPORT

ROAD

Island Professional Realty LLC
Assr. Pct. 24-1.3

Dukes County
Assr. Pct. 24-1

Dukes County
Assr. Pct. 24-1

Dukes County
Assr. Pct. 24-1

Dukes County
Assr. Pct. 24-1

stock building
"Vinograd Operations"
**Edgartown
Assessor's Parcel
24-1.6**
Island Investment Properties LLC
35 Airport Road
Lease Area = 38,680 sq ft ±

proposed addition
2,695 sq.ft new construction
(3,700 sq. ft. increase)

Edgartown
Assessor's Parcel
24-1.2
Island Investment Properties LLC
27 Airport Road
Lease Area = 29,500 sq. ft. ±

to airport terminal

to West Tab

utility pole

utility pole

store entrance

edge of asphalt

plantings

asphalt parking

concrete apron

dirt parking

retaining wall

retaining wall

asphalt

asphalt

asphalt

asphalt

asphalt

asphalt

asphalt

asphalt

asphalt

asphalt

asphalt

asphalt

asphalt

asphalt

asphalt

asphalt

asphalt

asphalt

asphalt

parking

parking

parking

parking

parking

parking

parking

parking

parking

parking

parking

parking

parking

lease lot line

lease lot line

lease lot line

lease lot line

lease lot line

lease lot line

lease lot line

lease lot line

lease lot line

lease lot line

lease lot line

lease lot line

lease lot line

lease lot line

lease lot line

lease lot line

lease lot line

lease lot line

lease lot line

lease lot line

lease lot line

lease lot line

lease lot line

lease lot line

lease lot line

lease lot line

lease lot line

lease lot line

lease lot line

lease lot line

lease lot line

lease lot line

lease lot line

lease lot line

lease lot line

lease lot line

lease lot line

lease lot line

lease lot line

lease lot line

lease lot line

lease lot line

lease lot line

lease lot line

lease lot line

lease lot line

lease lot line

lease lot line

lease lot line

lease lot line

lease lot line

lease lot line

lease lot line

lease lot line

lease lot line

lease lot line

lease lot line

lease lot line

lease lot line

lease lot line

lease lot line

lease lot line

lease lot line

lease lot line

lease lot line

lease lot line

lease lot line

lease lot line

lease lot line

lease lot line

lease lot line

lease lot line

lease lot line

lease lot line

lease lot line

lease lot line

lease lot line

lease lot line

lease lot line

lease lot line

lease lot line

lease lot line

lease lot line

lease lot line

lease lot line

lease lot line

lease lot line

lease lot line

lease lot line

lease lot line

lease lot line

lease lot line

lease lot line

lease lot line

lease lot line

lease lot line

lease lot line

lease lot line

lease lot line

lease lot line

lease lot line

lease lot line

lease lot line

lease lot line

lease lot line

lease lot line

lease lot line

lease lot line

lease lot line

lease lot line

lease lot line

lease lot line

lease lot line

lease lot line

lease lot line

lease lot line

lease lot line

lease lot line

lease lot line

lease lot line

lease lot line

lease lot line

lease lot line

lease lot line

lease lot line

lease lot line

lease lot line

lease lot line

lease lot line

lease lot line

lease lot line

lease lot line

lease lot line

lease lot line

lease lot line

lease lot line

lease lot line

lease lot line

lease lot line

lease lot line

lease lot line

lease lot line

lease lot line

lease lot line

lease lot line

lease lot line

lease lot line

lease lot line

lease lot line

lease lot line

lease lot line

lease lot line

lease lot line

lease lot line

lease lot line

lease lot line

lease lot line

lease lot line

lease lot line

lease lot line

lease lot line

lease lot line

lease lot line

lease lot line

lease lot line

lease lot line

lease lot line

lease lot line

lease lot line

lease lot line

lease lot line

lease lot line

lease lot line

lease lot line

lease lot line

lease lot line

lease lot line

lease lot line

lease lot line

lease lot line

lease lot line

lease lot line

lease lot line

lease lot line

lease lot line

lease lot line

lease lot line

lease lot line

lease lot line

lease lot line

lease lot line

lease lot line

lease lot line

lease lot line

lease lot line

lease lot line

lease lot line

lease lot line

lease lot line

lease lot line

lease lot line

lease lot line

lease lot line

lease lot line

lease lot line

lease lot line

lease lot line

lease lot line

lease lot line

lease lot line

lease lot line

lease lot line

lease lot line

lease lot line

lease lot line

lease lot line

lease lot line

lease lot line

lease lot line

lease lot line

lease lot line

lease lot line

lease lot line

lease lot line

lease lot line

lease lot line

lease lot line

lease lot line

lease lot line

lease lot line

lease lot line

lease lot line

lease lot line

lease lot line

lease lot line

lease lot line

lease lot line

lease lot line

lease lot line

lease lot line

lease lot line

lease lot line

lease lot line

lease lot line

lease lot line

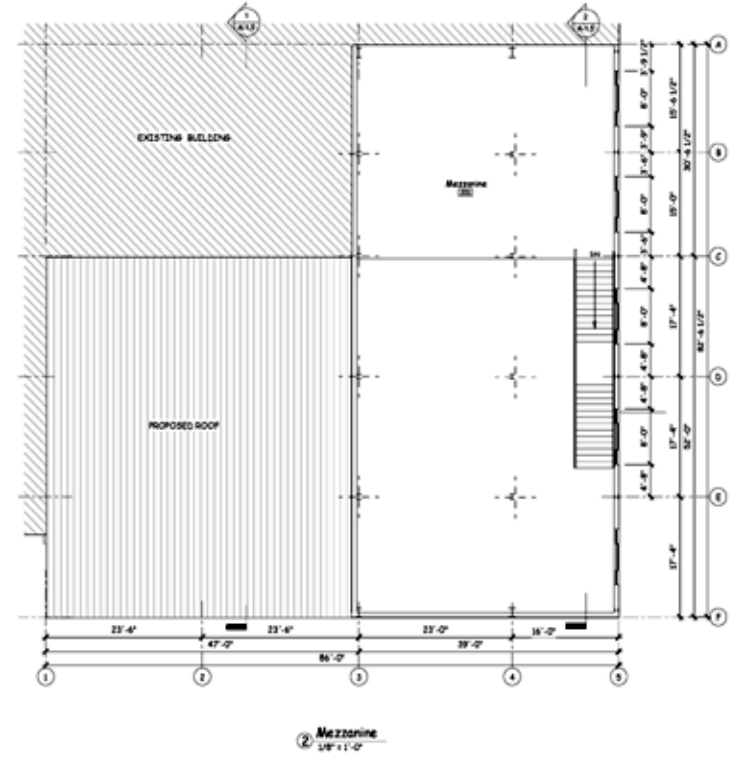
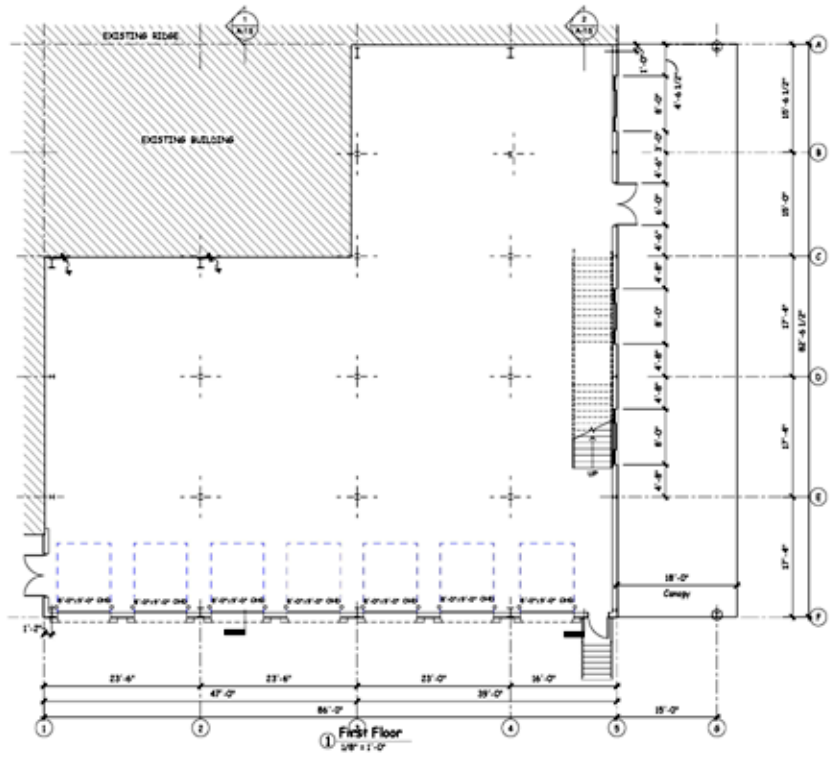
lease lot line

lease lot line

lease lot line

DRI 369-M3 Vineyard Decorators Expansion New Addition Plans

NOTES
 1. Ground Snow Load - 20 psf
 Basic Wind Speed - 120 mph
 Collateral Load - 2 psf
 2. Metal Building to be Manufactured by
 USA (United Structures of America, Inc.)
 Houston, TX



SCALE: AS SHOWN
 DATE: 01/11/13
 DRAWN BY: JMT
 APPROVED BY: [Signature]
 FLOOR PLANS

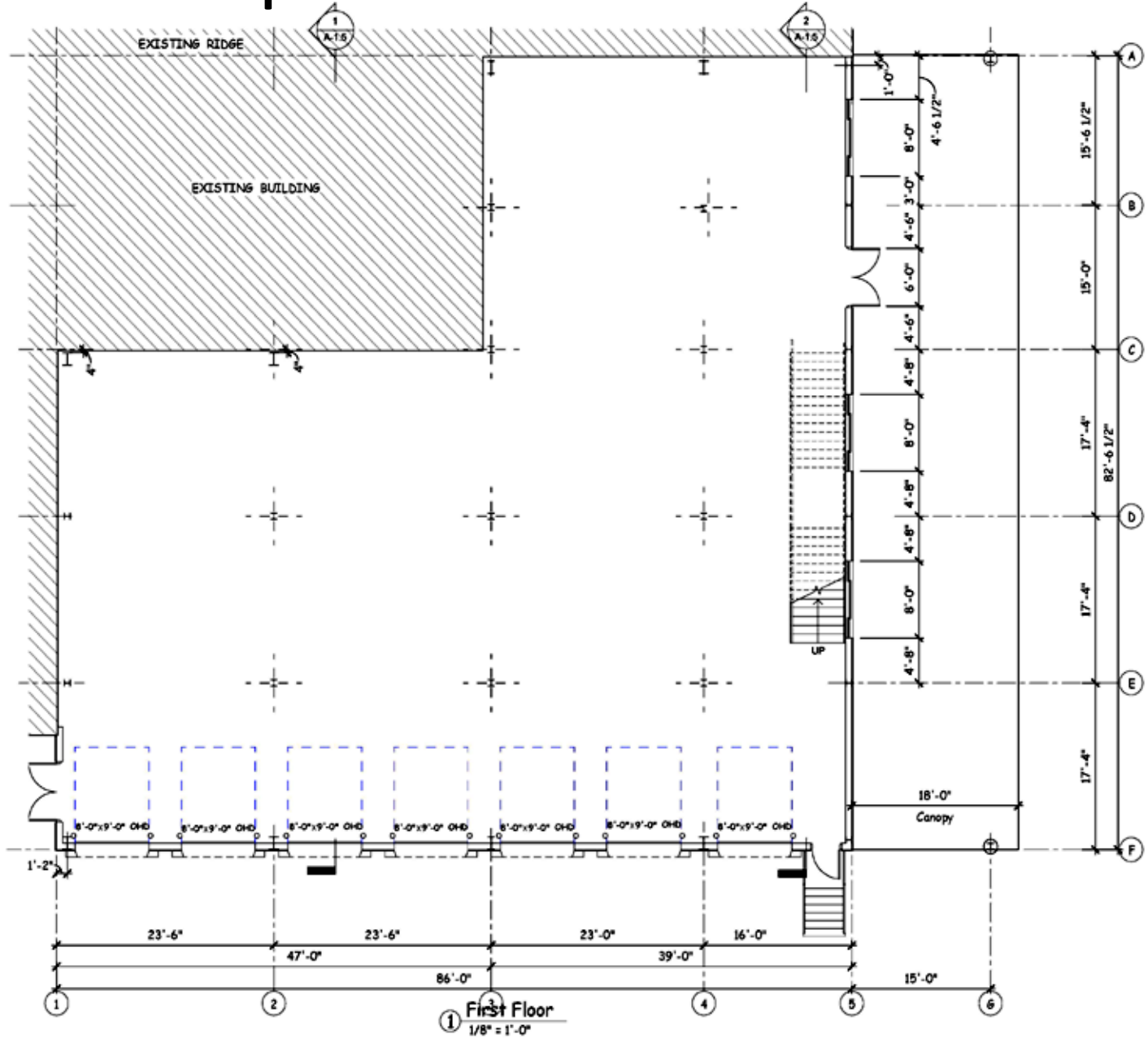
SHEET NO. **A-1.1**

VINEYARD DECORATORS
 835 AIRPORT ROAD, VINEYARD HAVEN, MA.

NO. REVISION DATE

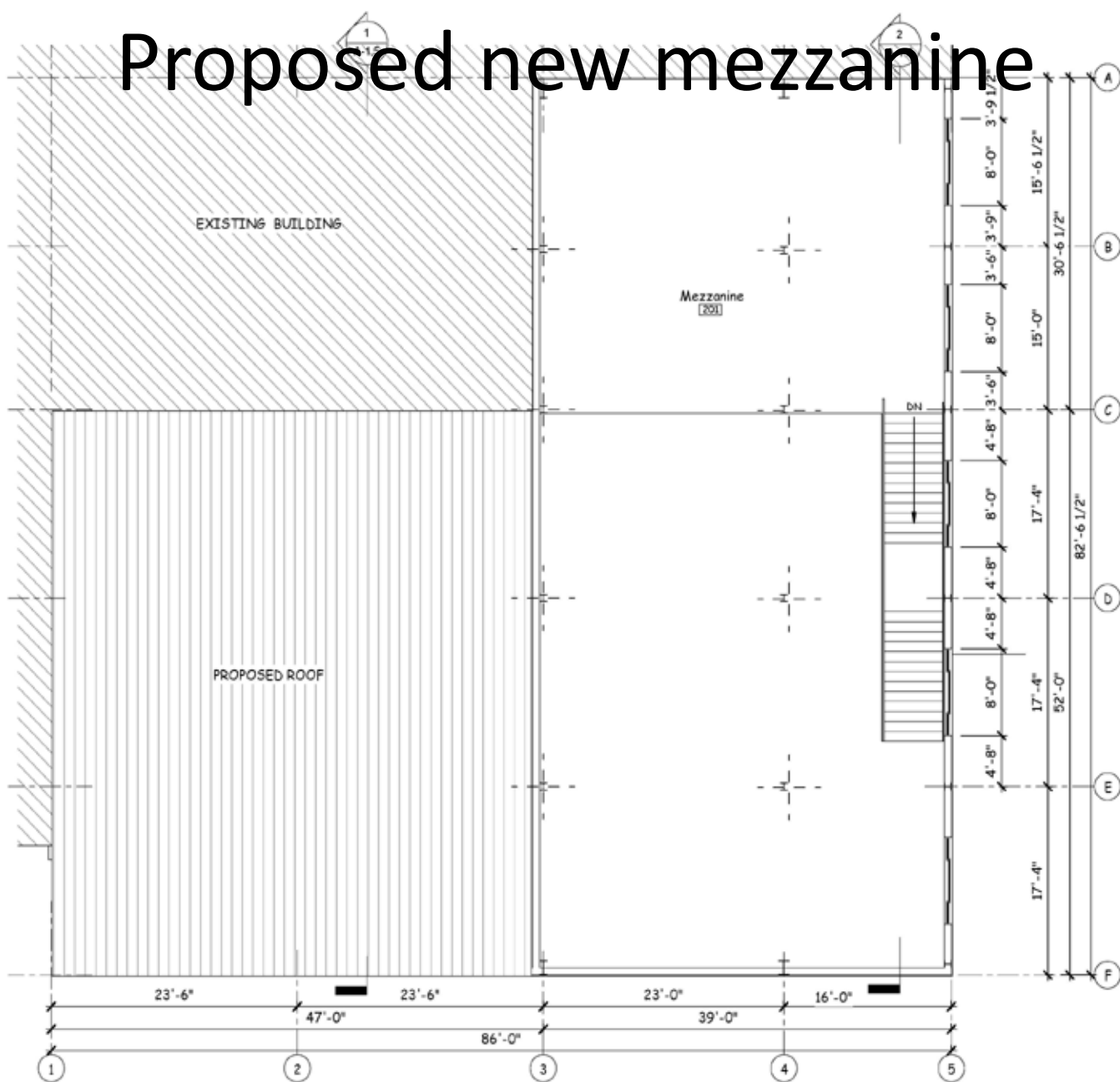
CUPERTINO SYSTEMS INC.

Proposed new first floor



① First Floor
1/8" = 1'-0"

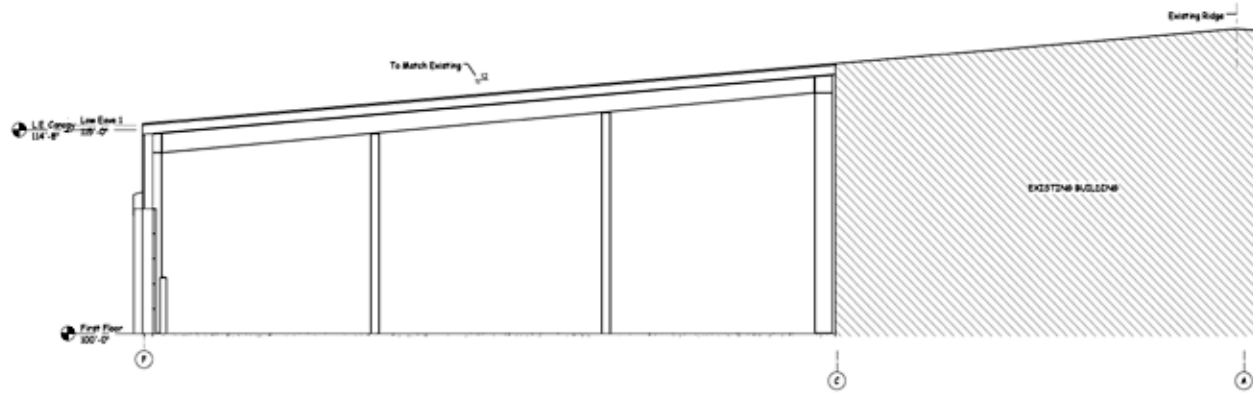
Proposed new mezzanine



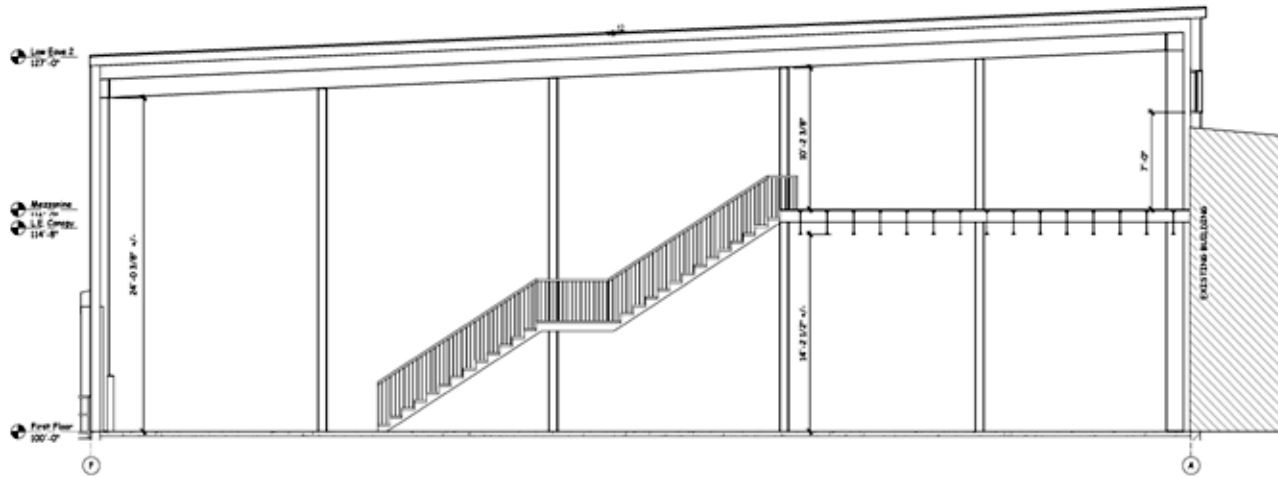
② Mezzanine
1/8" = 1'-0"

DRI 369-M3 Vineyard Decorators Expansion

Sections



① Section 1
1/4" = 1'-0"



② Section 2
1/4" = 1'-0"



DATE: 08/15/13
DRAWN BY: JAW
APPROVED BY: GAB

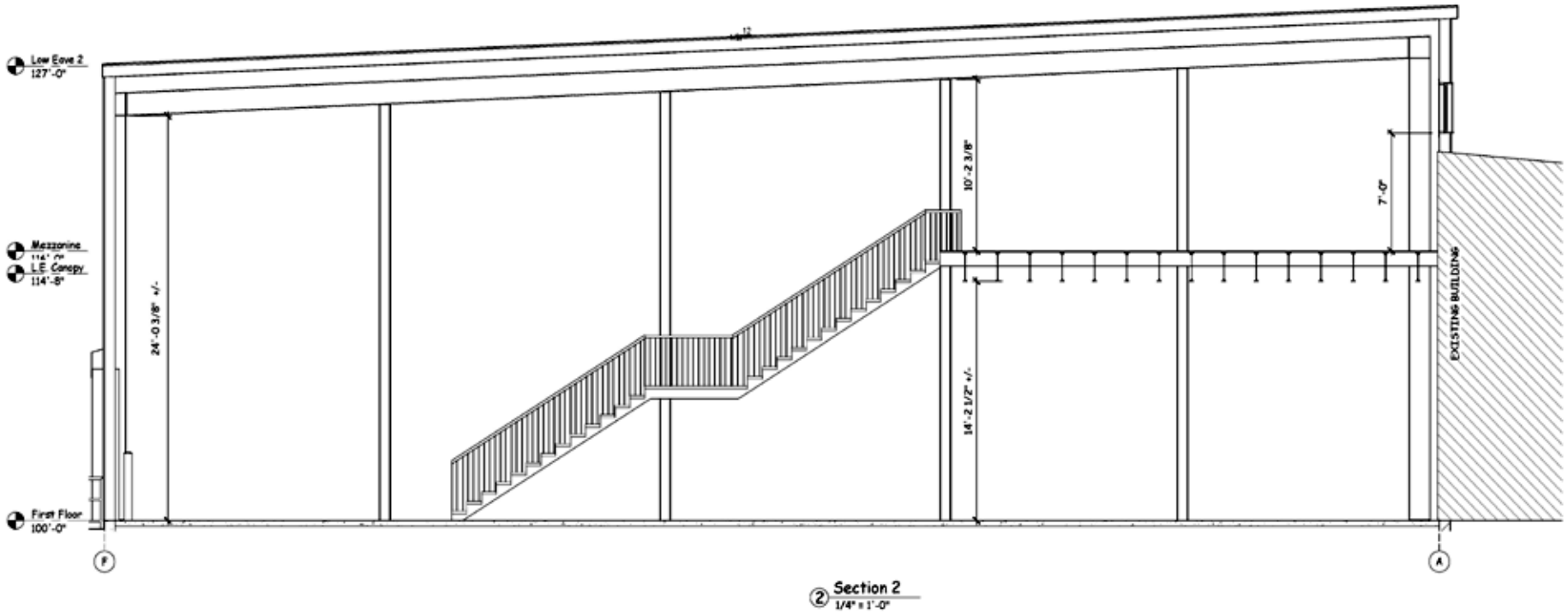
NO.	REVISION	DATE

VINEYARD DECORATORS
835 AIRPORT ROAD VINEYARD HAVEN, MA

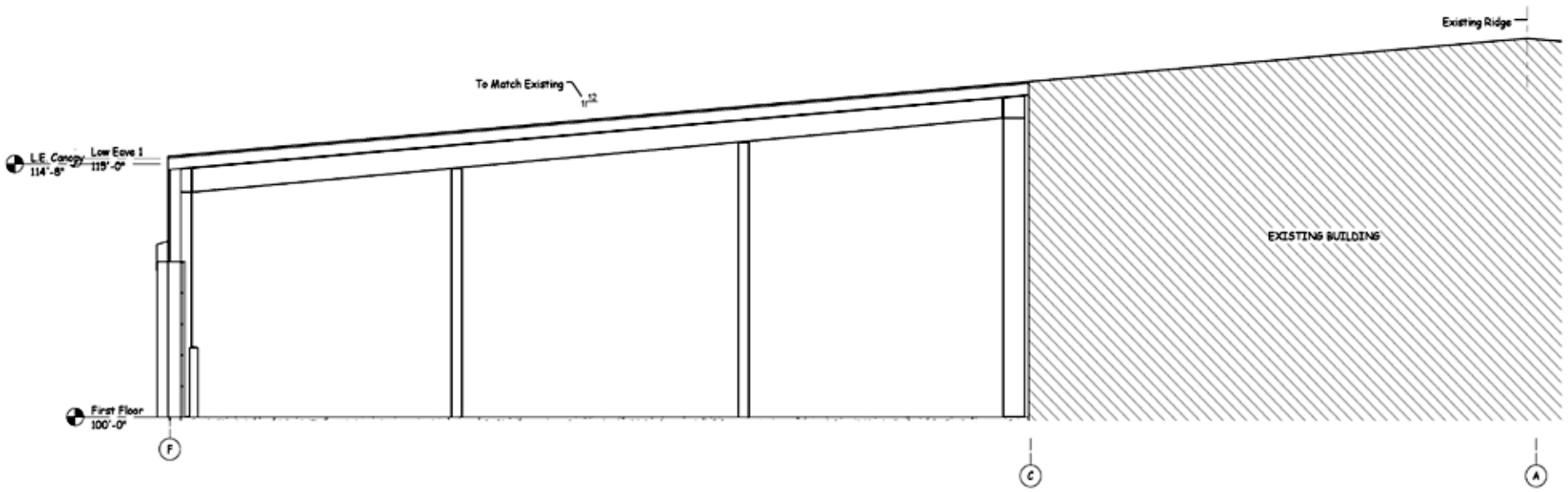
SCALE: 1/4" = 1'-0"
DATE: 08/15/13
DRAWN BY: JAW
APPROVED BY: GAB

SHEET NO.
A-1.5

Section



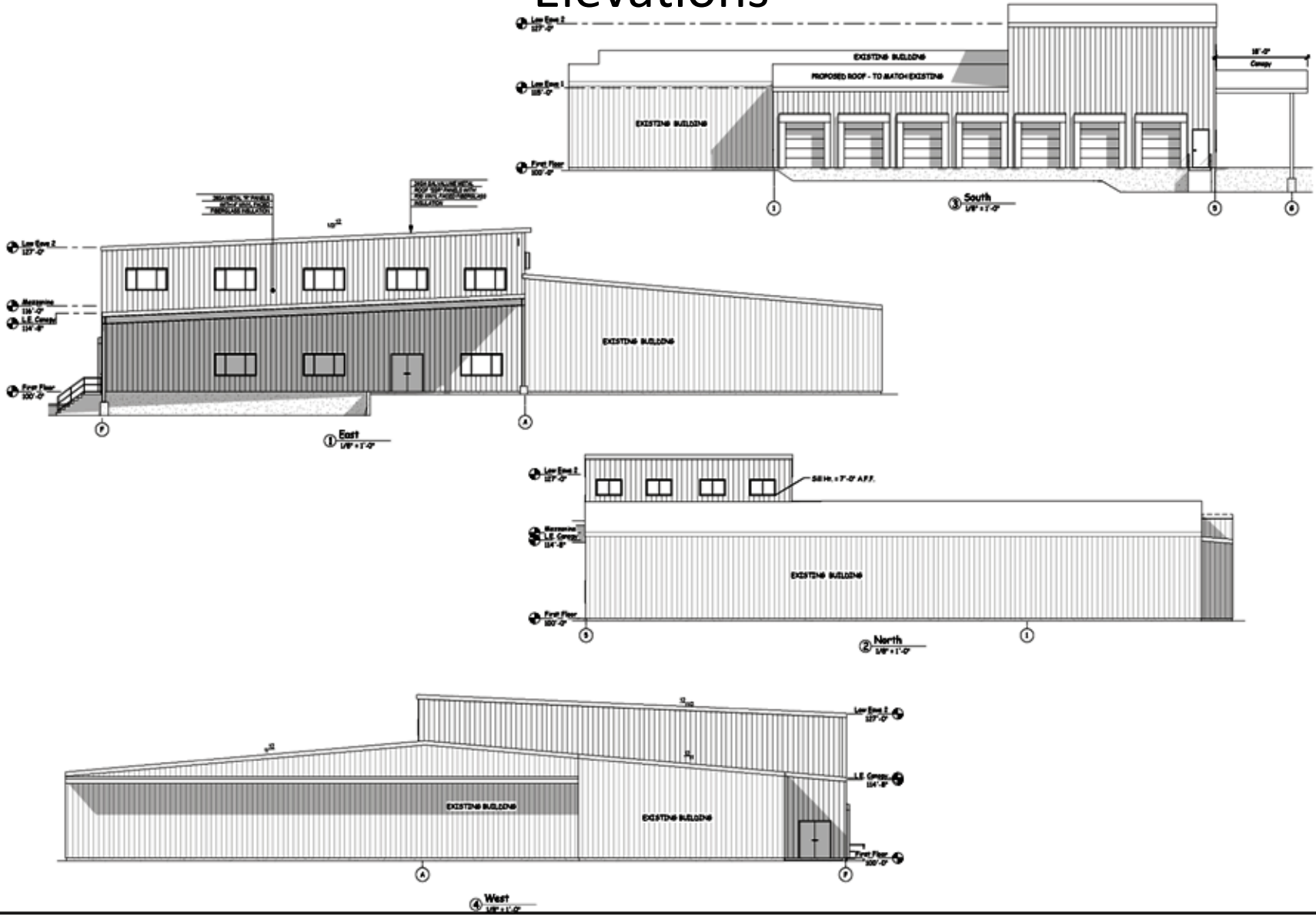
Section



① Section 1
1/4" = 1'-0"

DRI 369-M3 Vineyard Decorators Expansion

Elevations




 CAPE & BOARDWALKS, INC.
 100 AIRPORT ROAD, WINEYARD HAVEN, MA 01986
 TEL: 508-833-1111
 FAX: 508-833-1112
 WWW.CAPEANDBOARDWALKS.COM

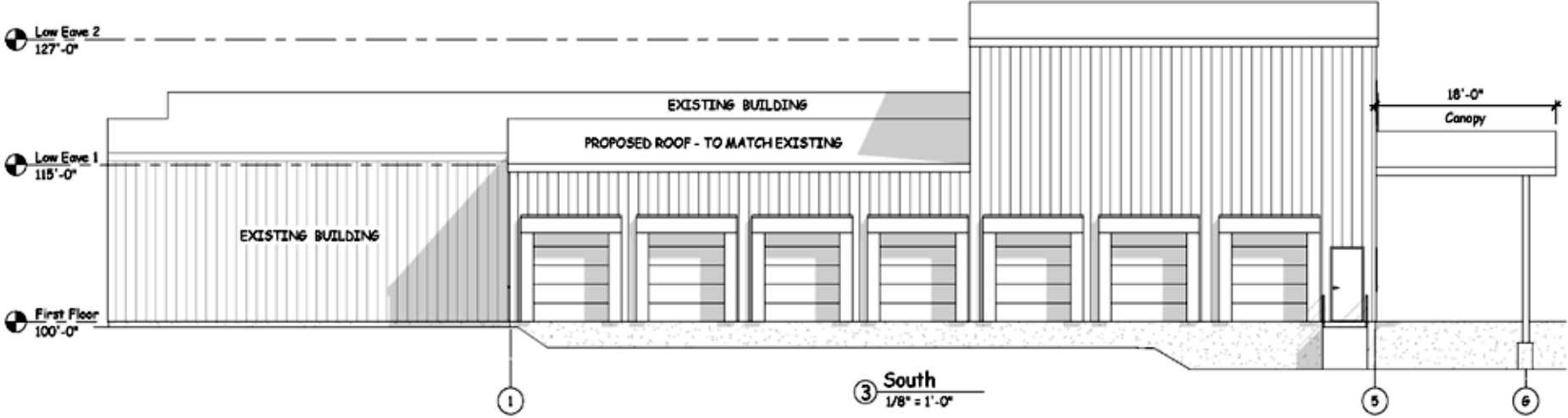
NO.	REVISION	DATE

VINEYARD DECORATORS
 100 AIRPORT ROAD, WINEYARD HAVEN, MA

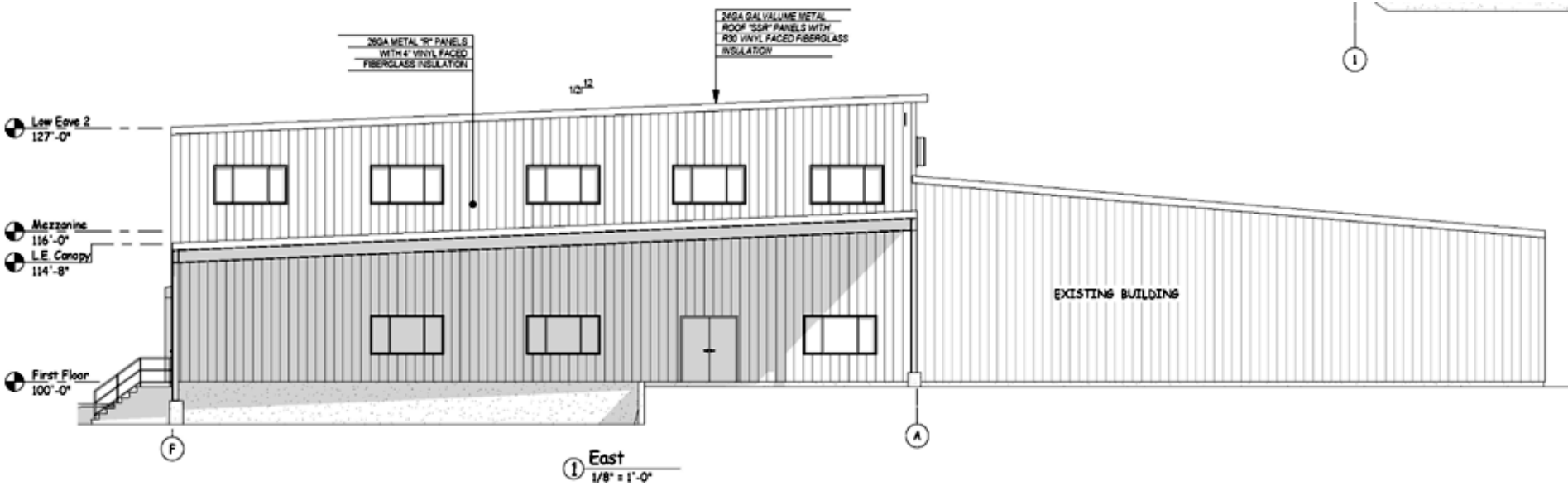
SCALE: 1/8" = 1'-0"	DATE: 08/15/13
DRAWN BY: JAF	APP'D BY: JAF
ELIMINATED	

SHEET NO. **A-1.4**

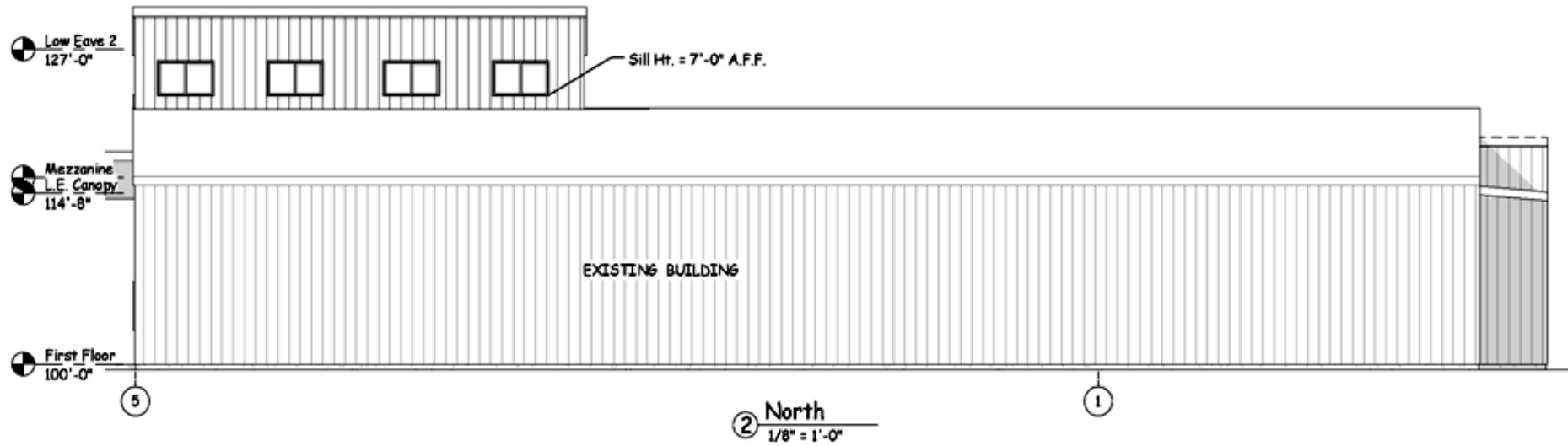
South Elevation



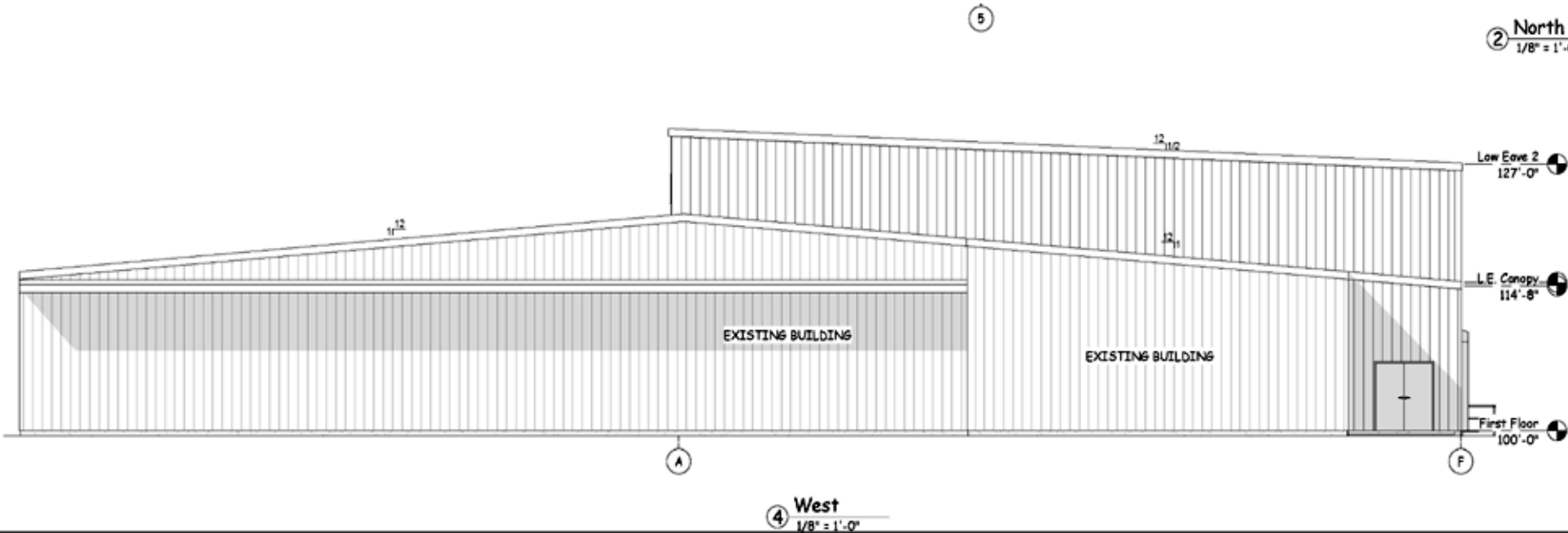
East Elevation

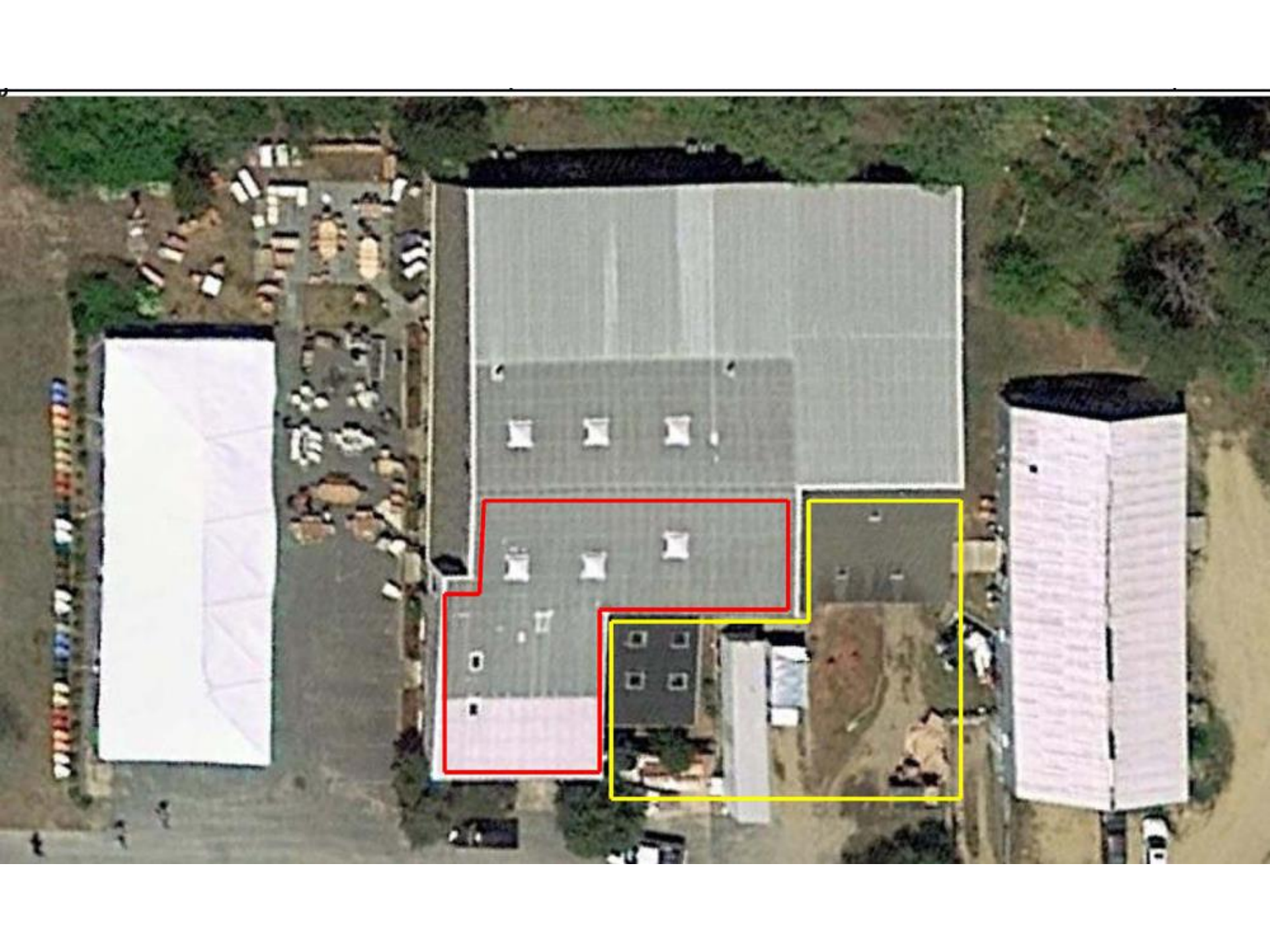


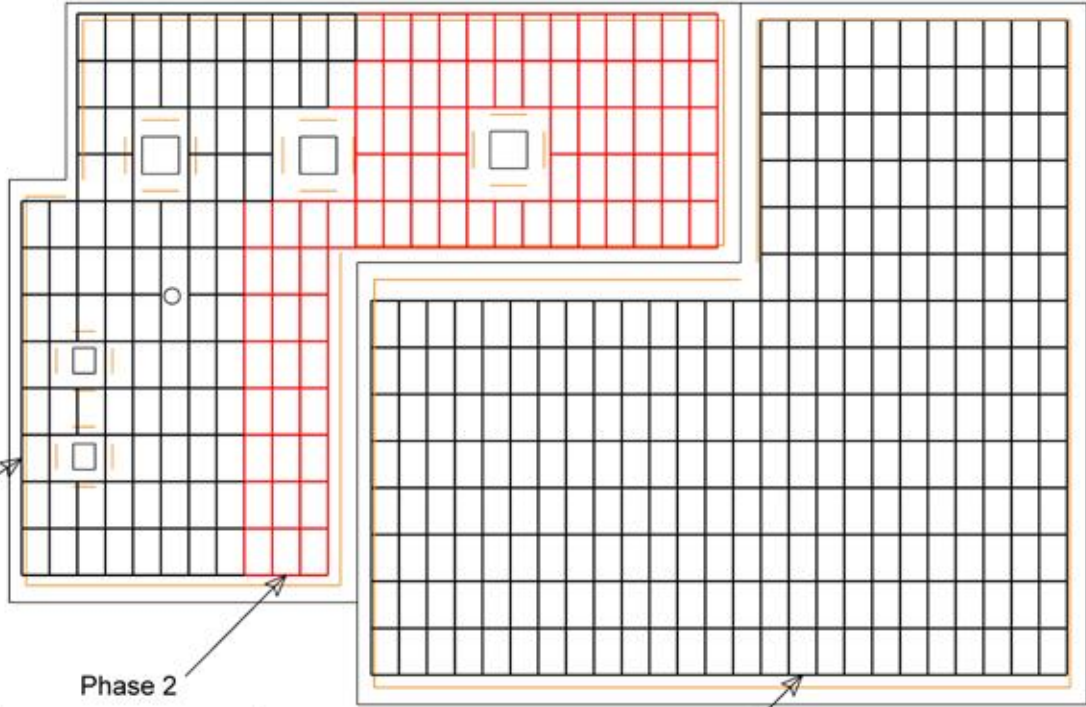
North Elevation



West Elevation







Phase 1

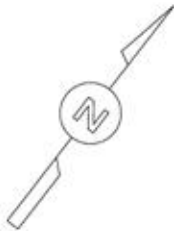
- (37) SolarWorld 285w Solar Modules
 - (88) Enphase M250 Microinverters
to be located beneath each module
- Breaker Panel (point of connection with utility)
 - Lockable Disconnect Switch
 - Existing Utility Meter

Phase 2

- (85) SolarWorld 285w Solar Modules
- (85) Enphase M250 Microinverters
to be located beneath each module

Phase 3

- (226) SolarWorld 285w Solar Modules
- (226) Enphase M250 Microinverters
to be located beneath each module



Module Azimuth = 150 Degrees True

Unless Otherwise Specified: Dimensions in inches Tolerances: Fractional ± .001 Angular: Mach ± .001		Site Notes: Conditions as shown, based on Field Survey performed on		Do Not Scale Drawing		HIC# 170677			
				FULLERS ENERGY, LLC					
				Phone# 508-696-3006					
				Project: Vineyard Decorators: 835 Airport rd, Edgartown, MA					
				Description: Roof Mounted 124.83 kW (438) Module System					
				Utility Acct# 1528 342 0014					
				Size		Drawing No.		Rev	
				A4		0001		C	
Revision B		DS		5/12/16		Scale		CAD File: .vc2	
Revision C		DS		5/12/16		1 Cad = 10' .1 scale		Sheet 1 of 1	

