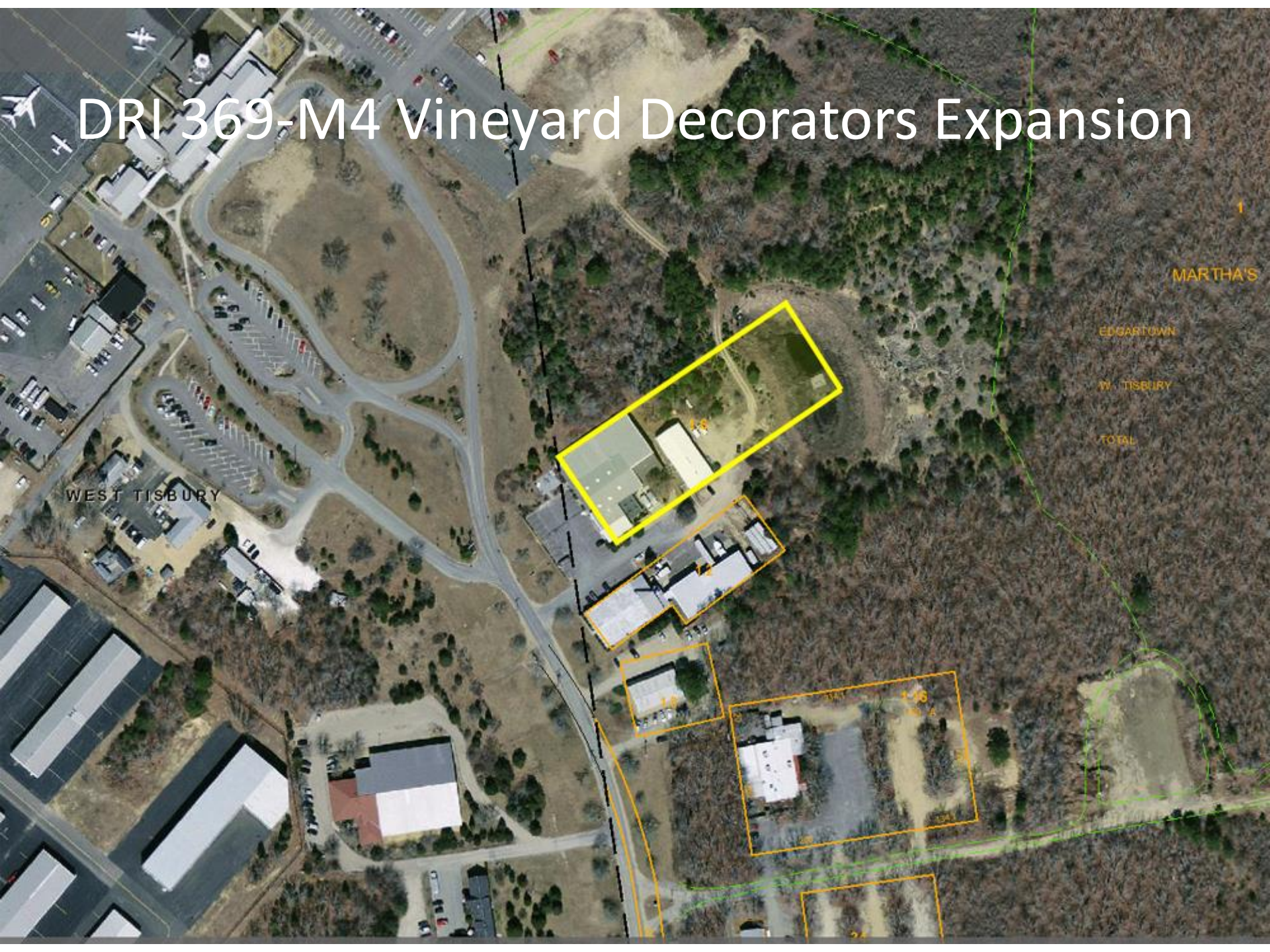


# DRI 369-M4 Vineyard Decorators Expansion



# DRI 369-M4 Vineyard Decorators Expansion



11

12

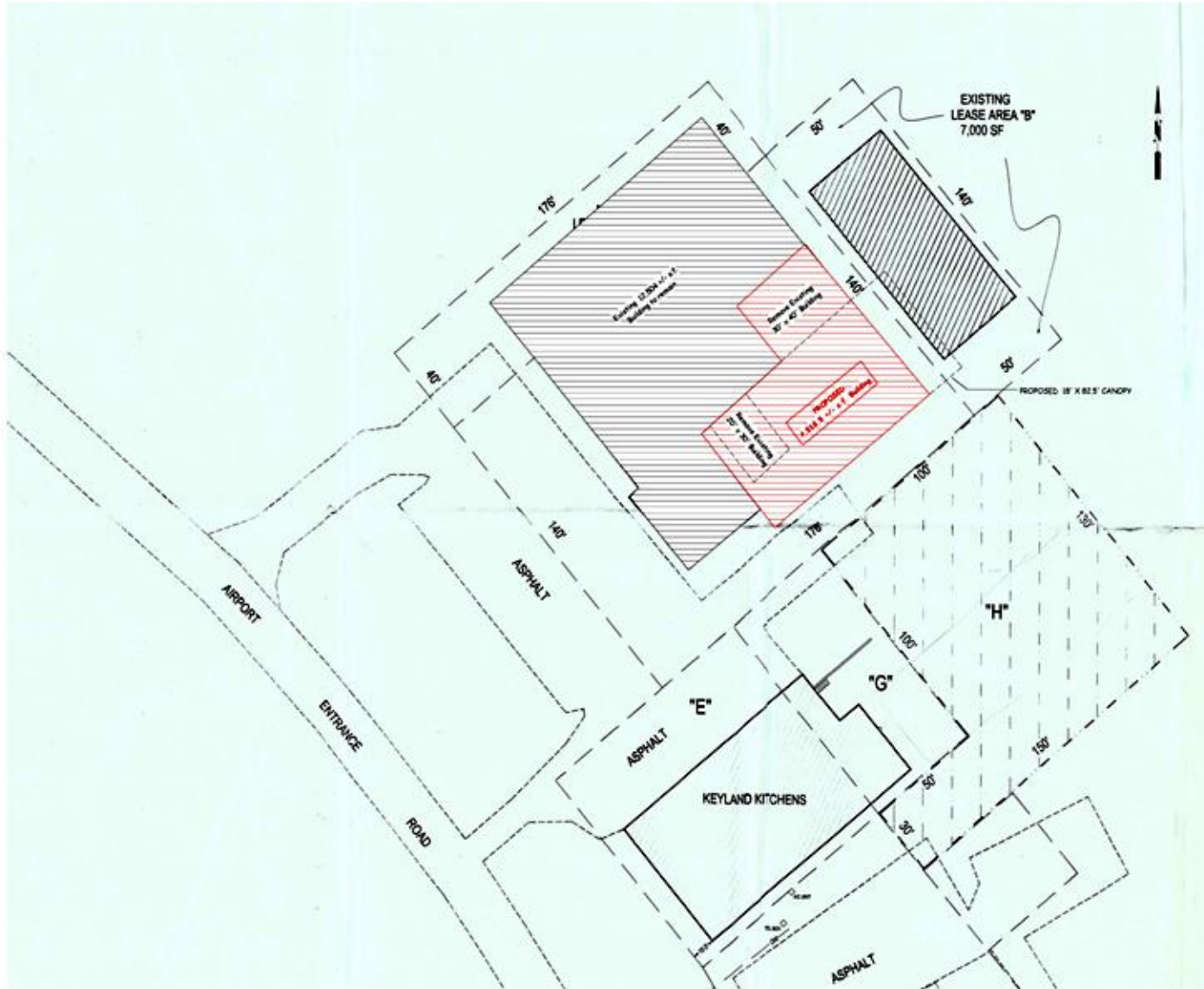
*Vineyard  
Decorators*



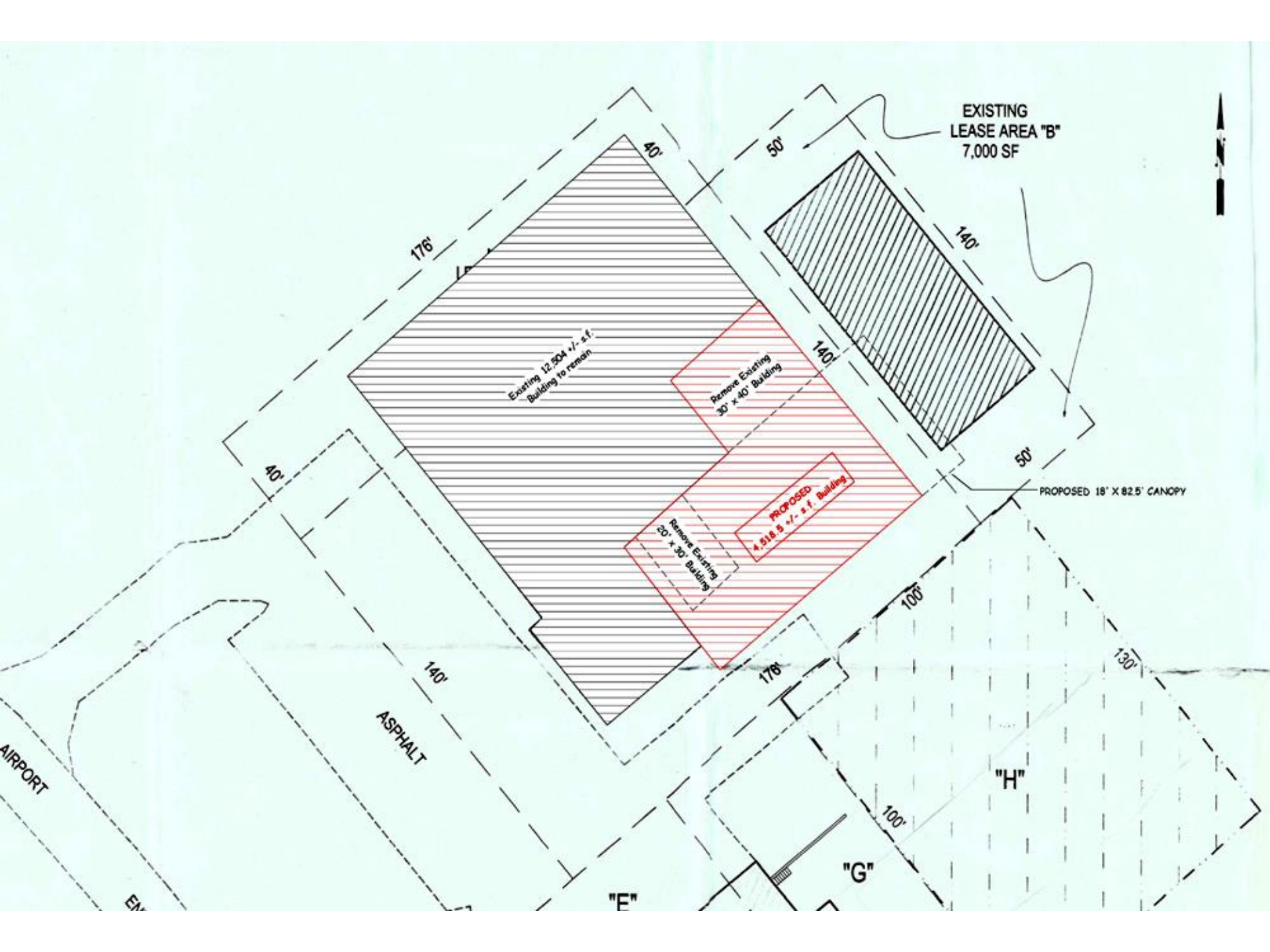




# DRI 369-M4 Vineyard Decorators Expansion

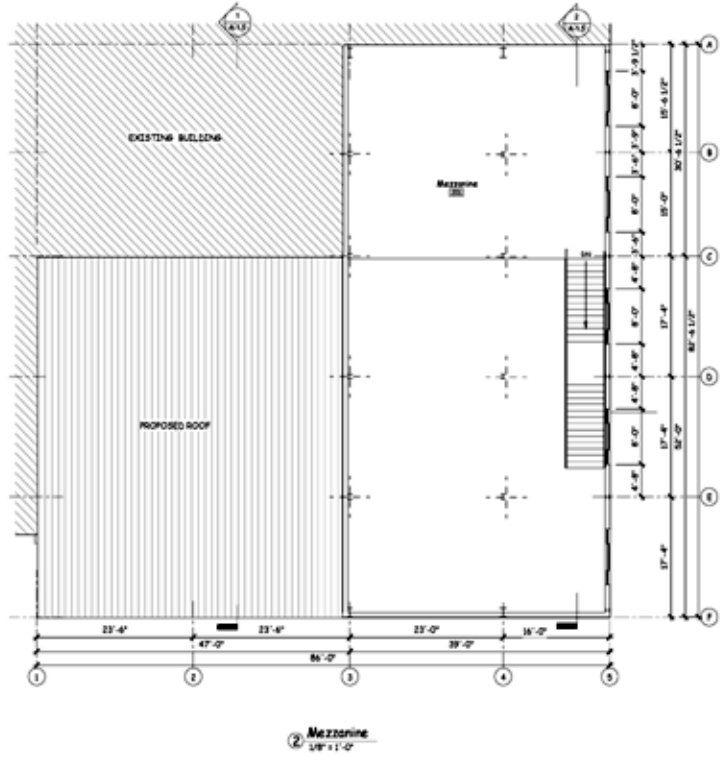
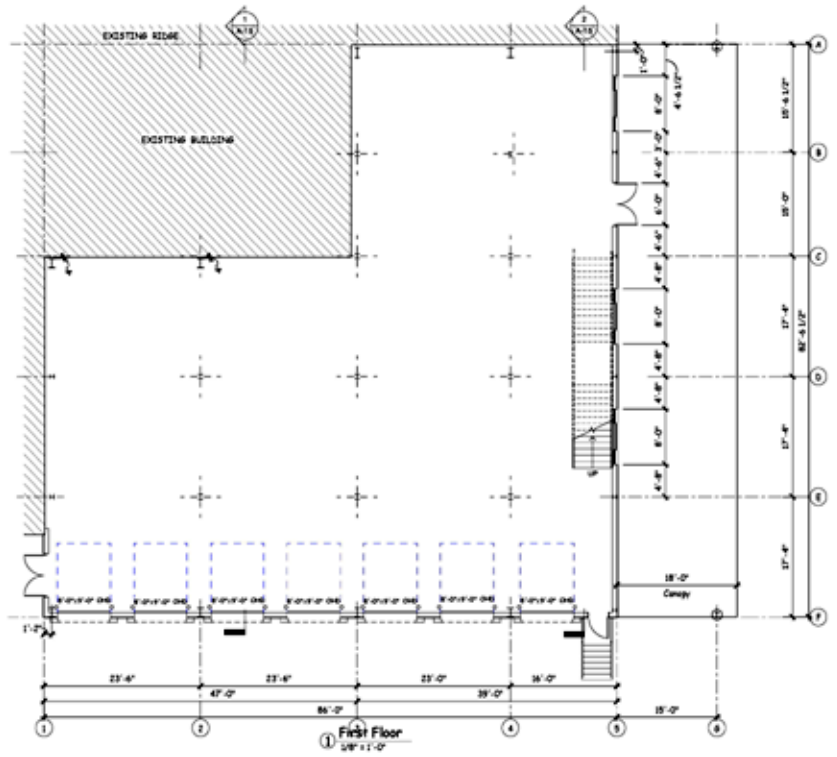


SCALE	DATE	NO.	REVISION	DATE	STAMP
1" = 30'	08/13/13				
DRAWN BY	APPROVED BY	<b>VINEYARD DECORATORS</b> 835 AIRPORT ROAD VINEYARD HAVEN, MA			
SHEET NO.					WITE PLAN
C-1.1					





- Notes:**
1. Ground Snow Load - 20 psf  
Basic Wind Speed - 120 mph  
Collateral Load - 2 psf
  2. Metal Building to be Manufactured by  
USA (United Structures of America, Inc.)  
Houston, TX



NO.	REVISION	DATE

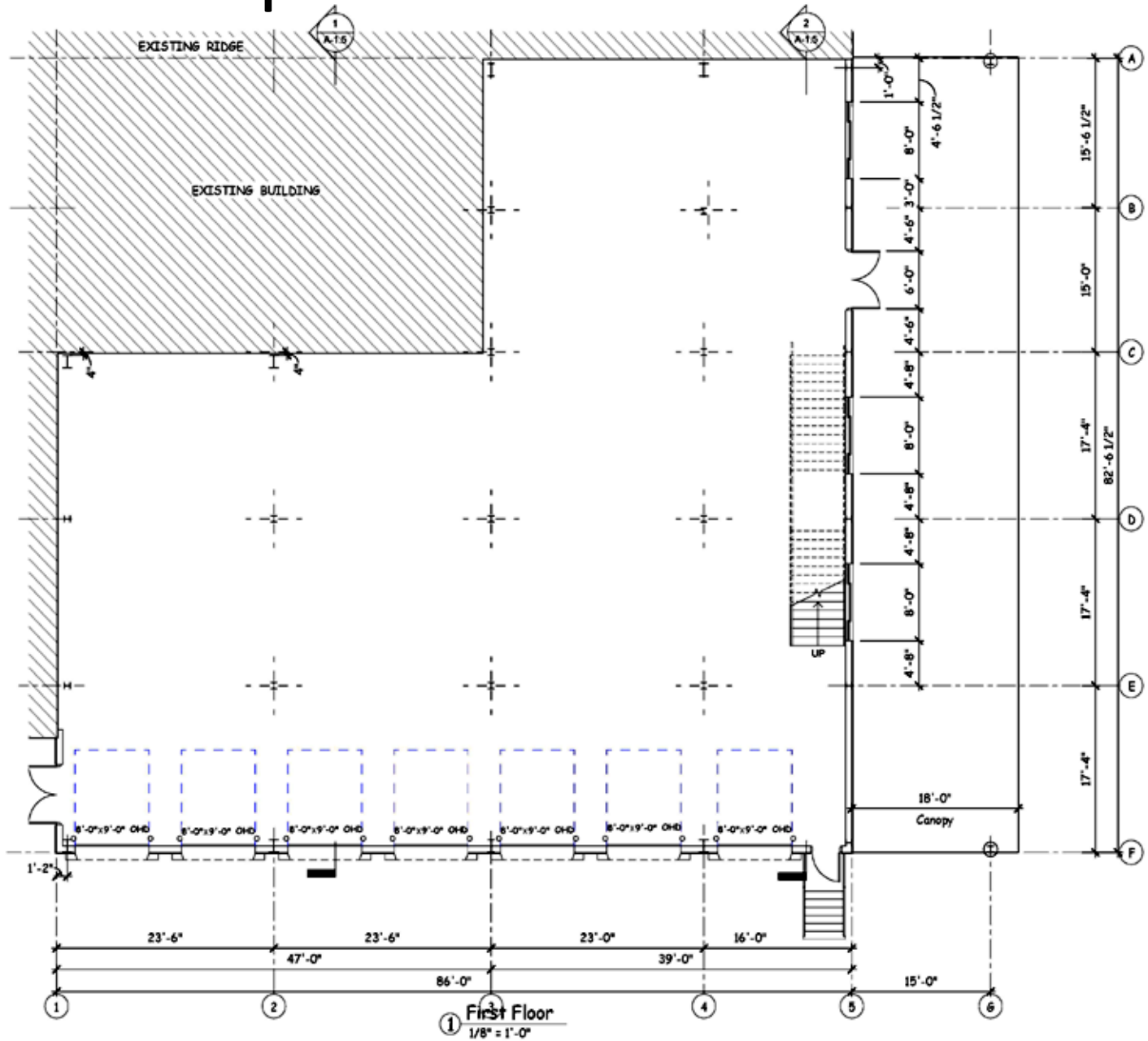
**VINEYARD DECORATORS**  
835 AIRPORT ROAD VINEYARD HAVEN, MA

SCALE: AS SHOWN  
DATE: 09/18/13  
DRAWN BY: JMT  
APPROVED BY: [Signature]  
FLOOR PLANS

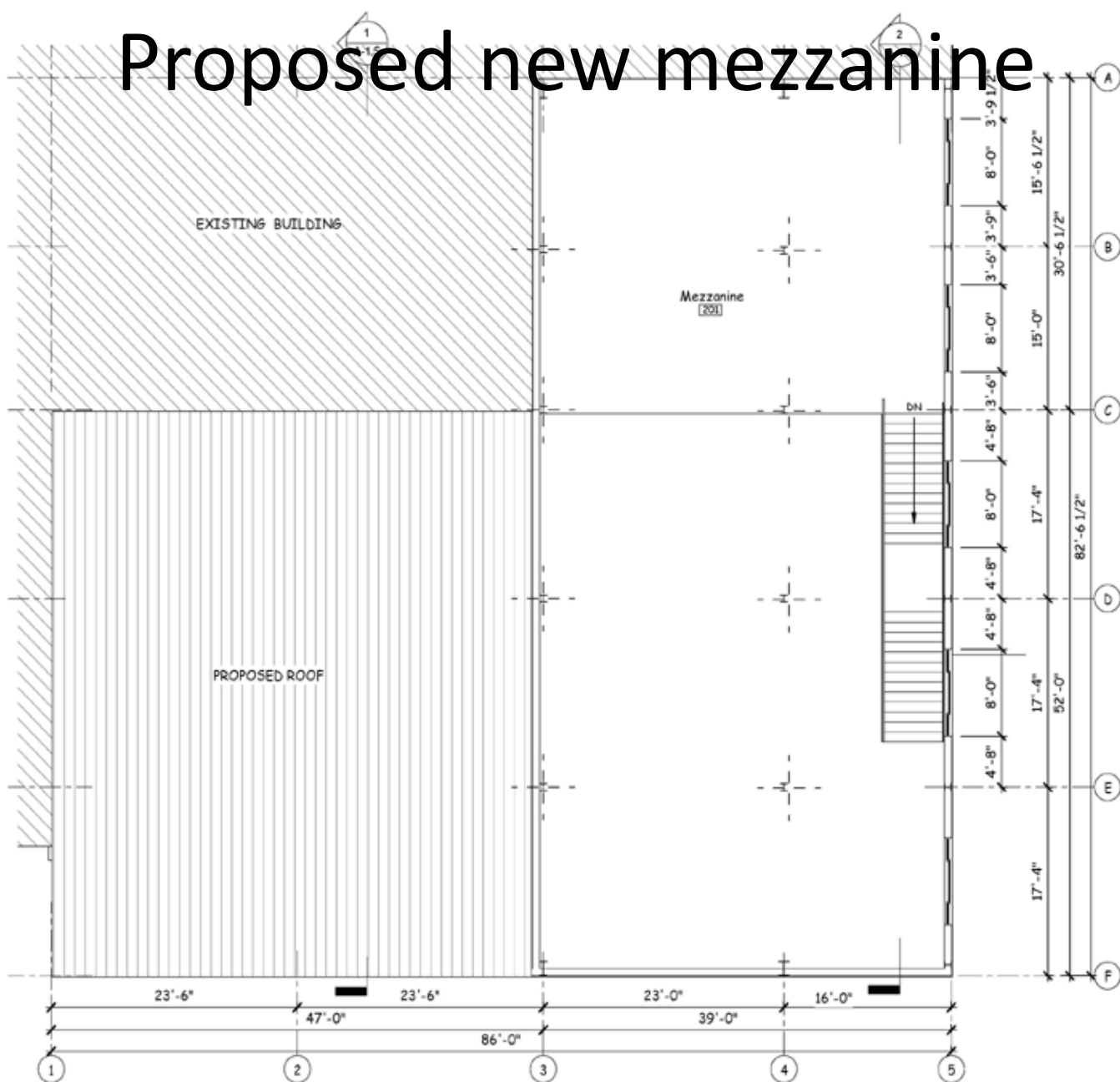
SHEET NO.  
**A-1.1**



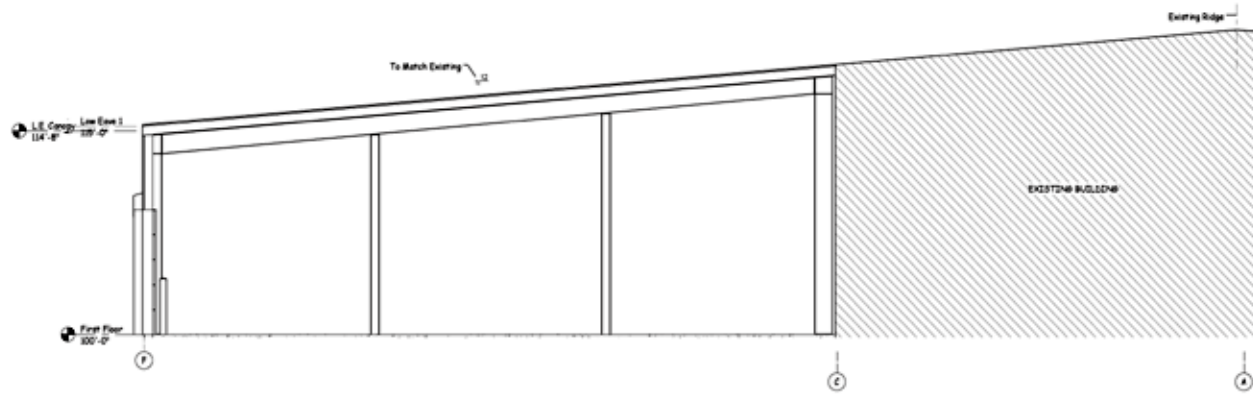
# Proposed new first floor



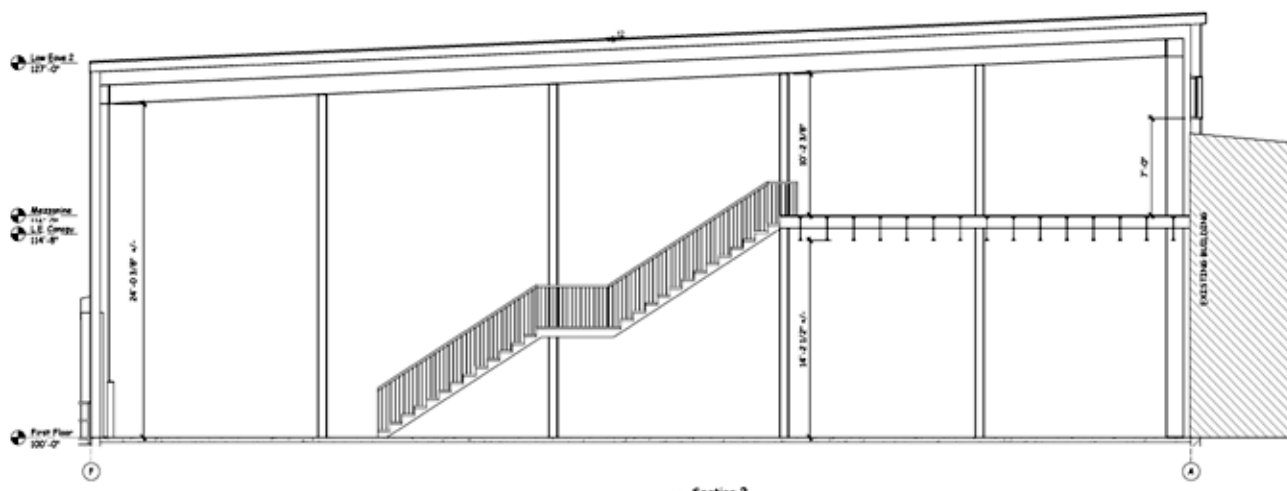
# Proposed new mezzanine



② Mezzanine  
1/8" = 1'-0"



① Section 1  
1/4" = 1'-0"



② Section 2  
1/4" = 1'-0"



**ONE RECORD SYSTEMS INC.**  
 10000 W. MICHIGAN AVE.  
 SUITE 100  
 WESTLAND, MI 48090  
 (313) 487-1100

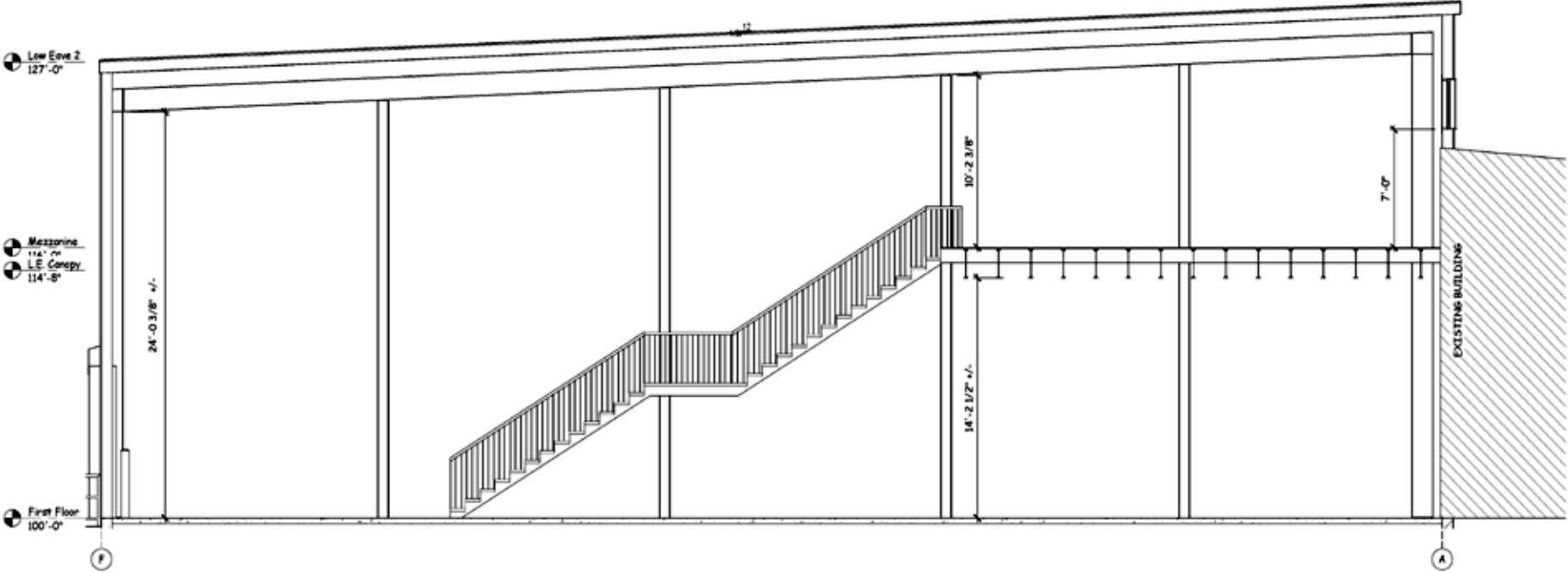
NO.	REVISION	DATE

**VINEYARD DECORATORS**  
 835 AIRPORT ROAD VINEYARD HAVEN, MA

SCALE: 1/4" = 1'-0"  
 DATE: 08/18/13  
 DRAWN BY: JAW  
 APPROVED BY: JAW  
**BUILDING SECTIONS**

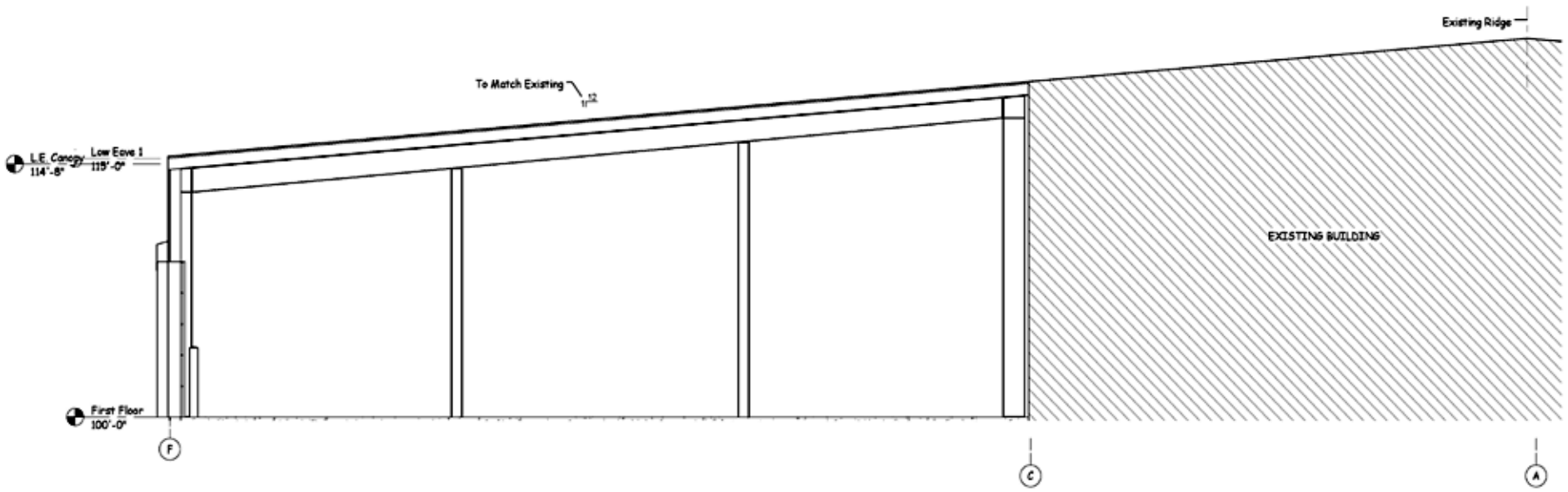
SHEET NO.  
**A-1.5**

# Section

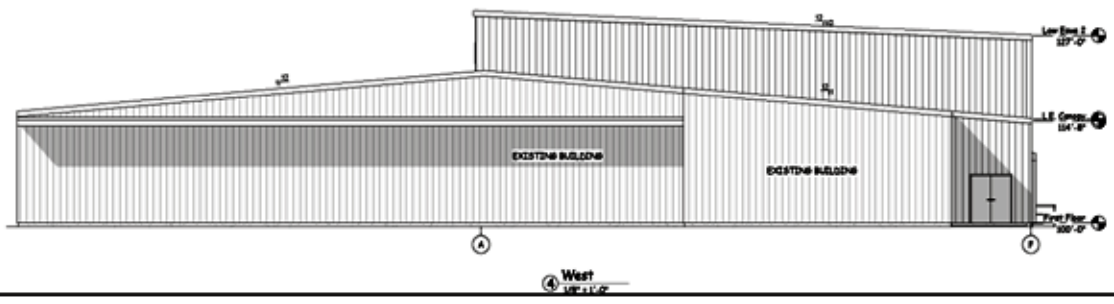
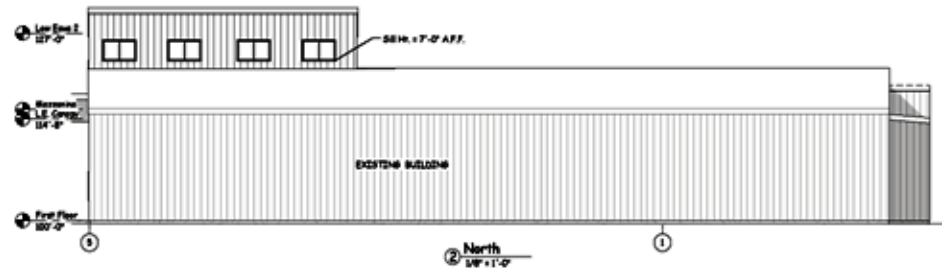
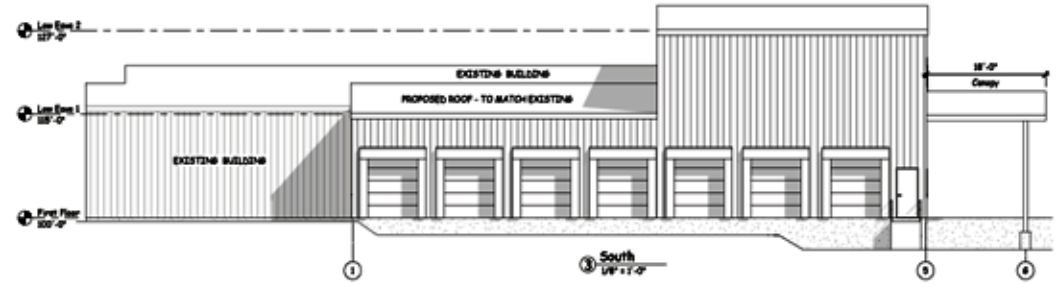
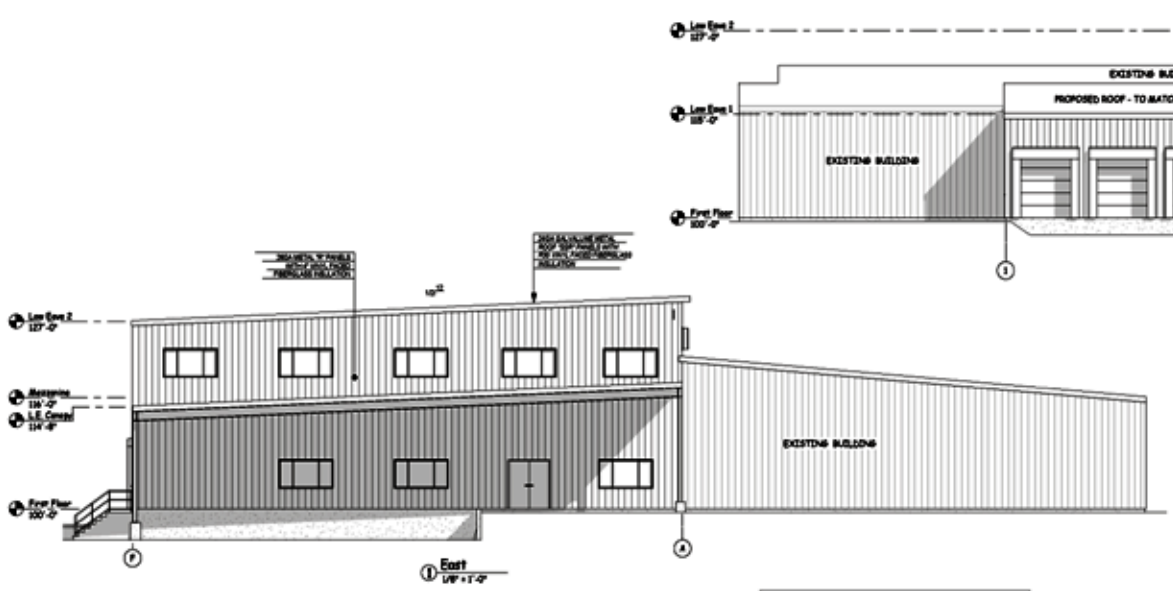


② Section 2  
1/4" = 1'-0"

# Section



① Section 1  
1/4" = 1'-0"



  
 CAPE & BOARDWALKS INC.  
 1000 W. 10th Street, Suite 100  
 Cape Cod, MA 02542  
 (508) 338-1111  
 www.capeandboardwalks.com

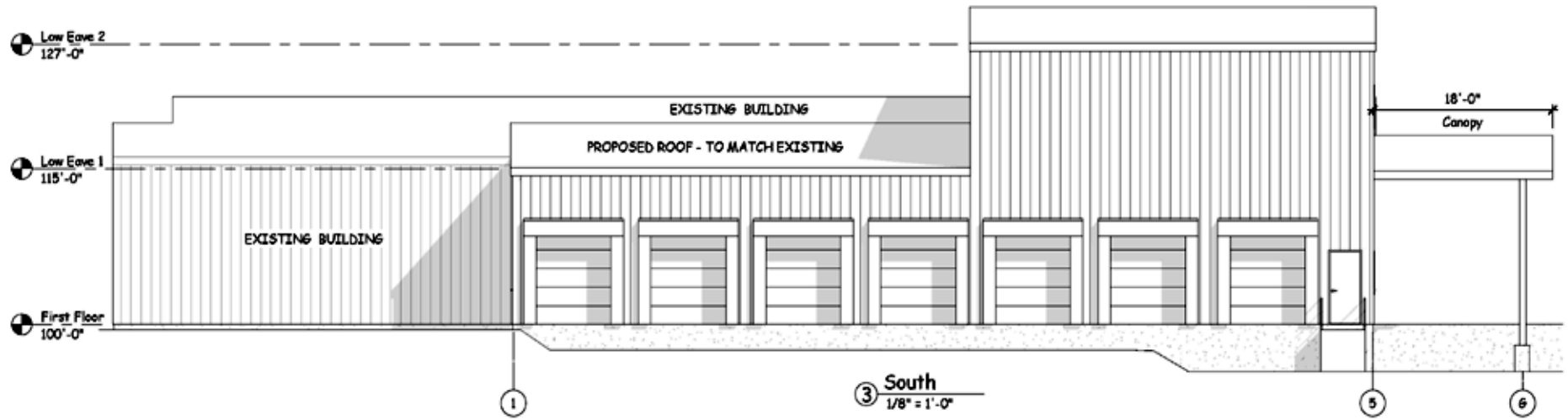
NO.	REVISION	DATE

VINEYARD DECORATORS  
 624 AIRPORT ROAD WAREHOUSING MA

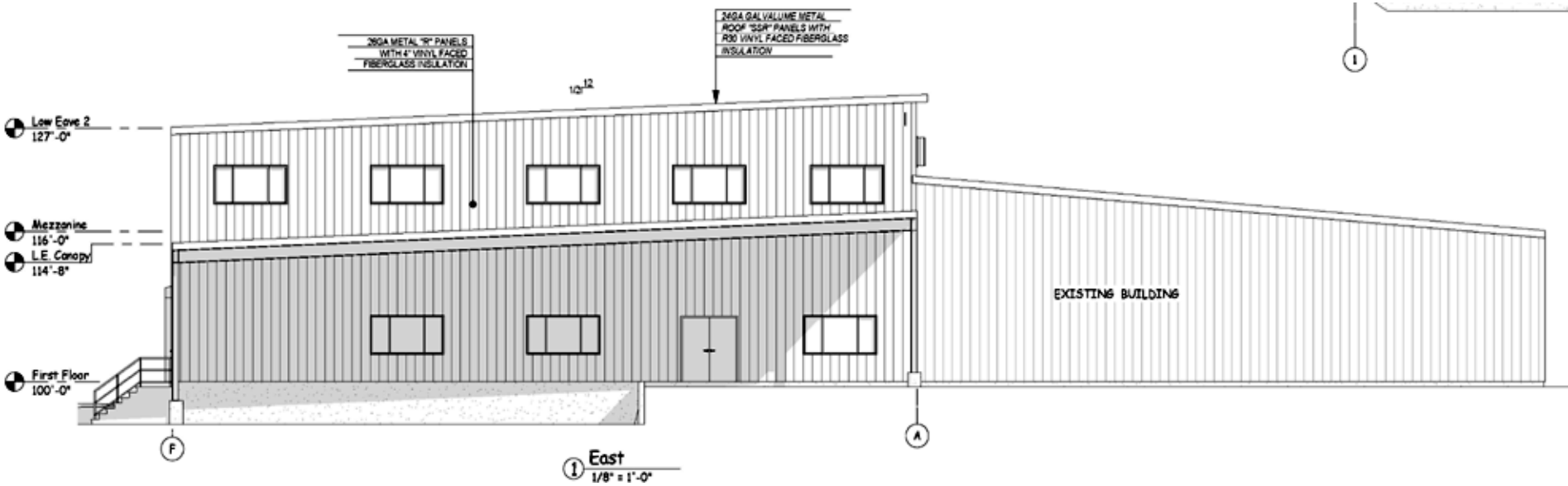
SCALE:	1/8" = 1'-0"
DATE:	08/15/13
DRAWN BY:	JAF
APPROVED BY:	
ELIMIN NUMBER:	

SHEET NO. **A-1.4**

# South Elevation

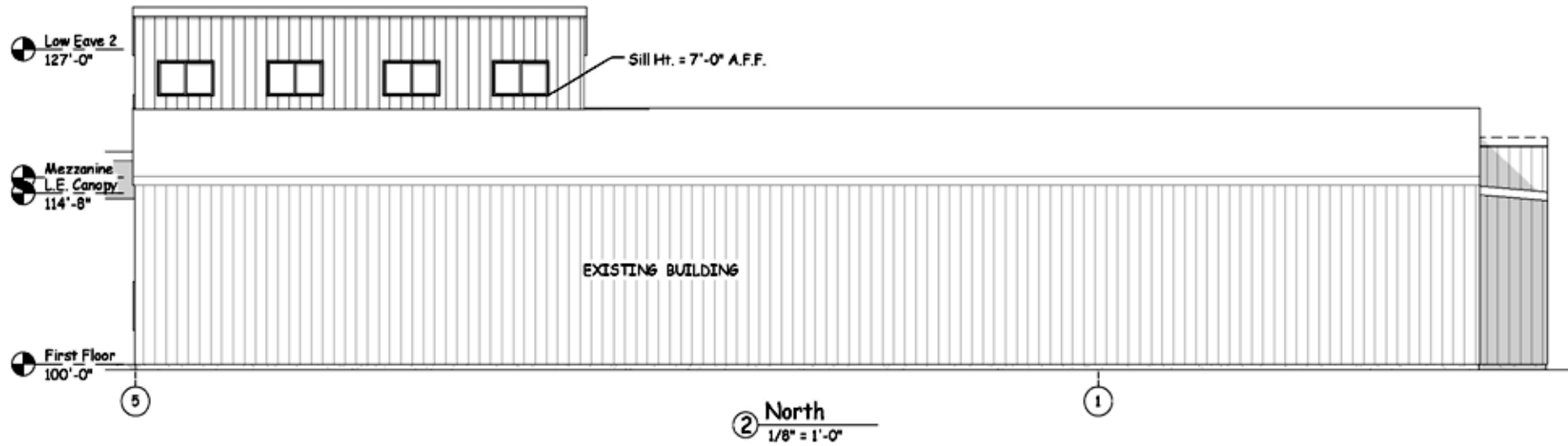


# East Elevation

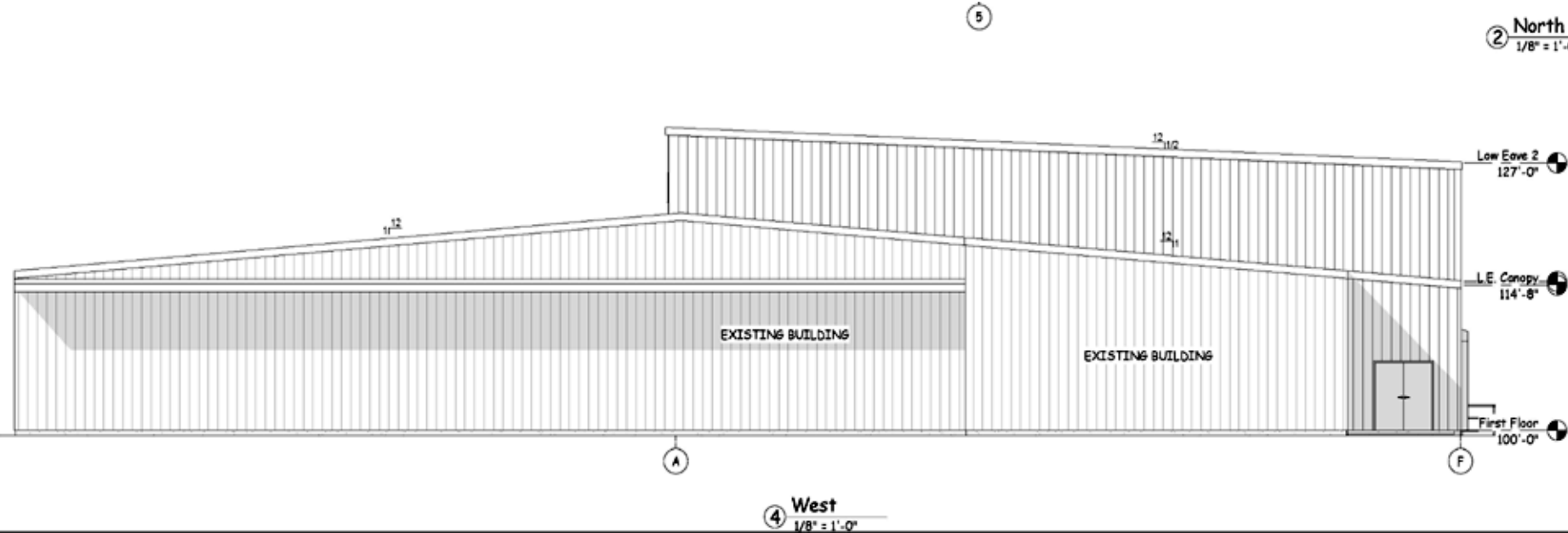


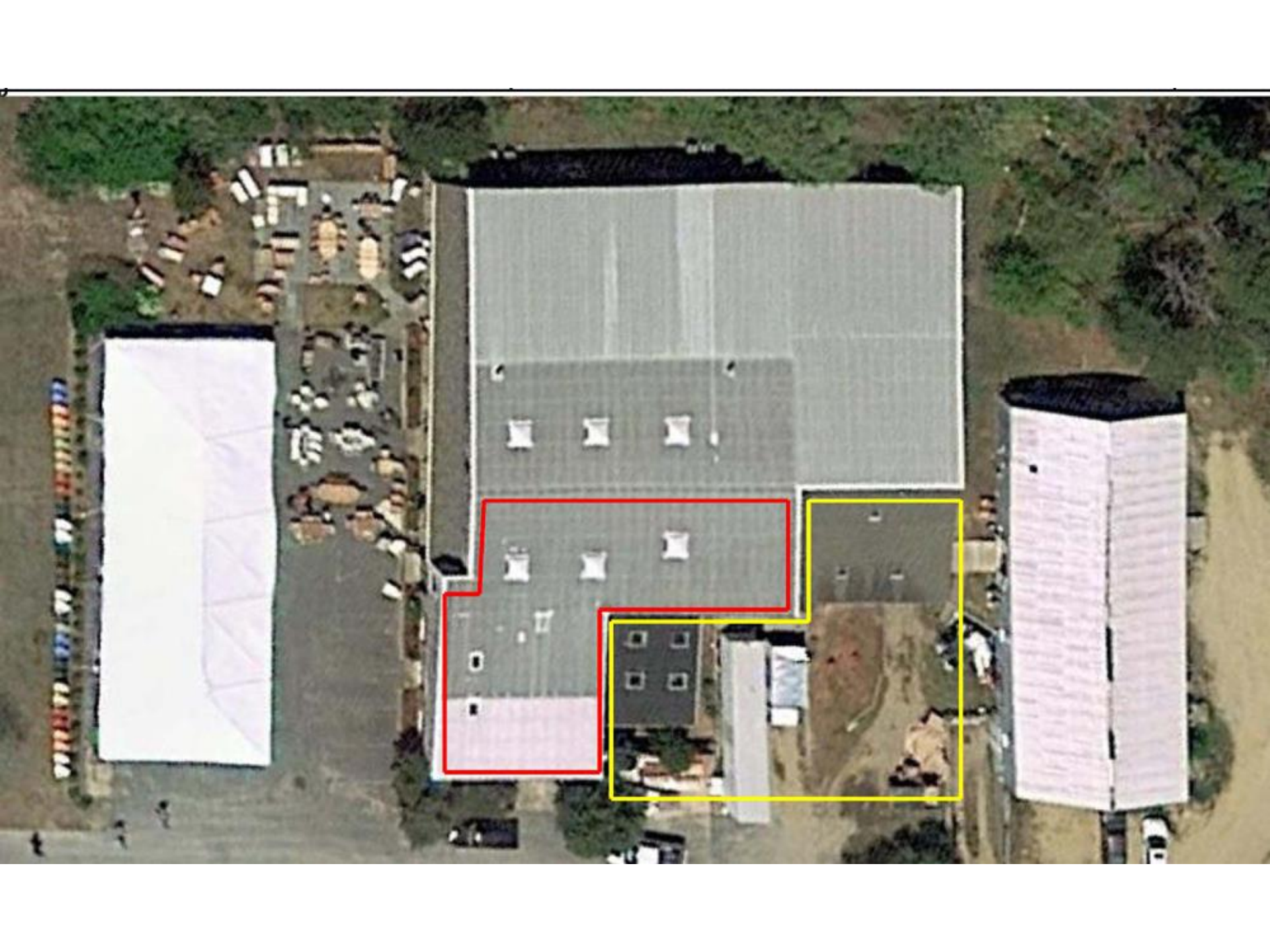


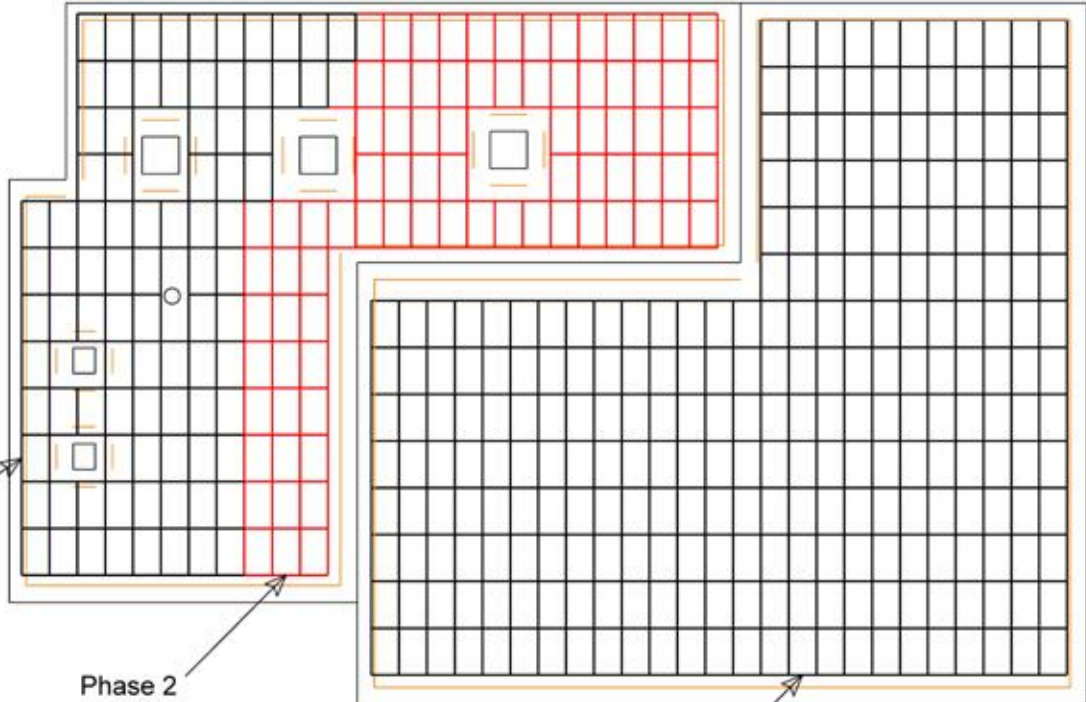
# North Elevation



# West Elevation







**Phase 1**

(37) SolarWorld 285w Solar Modules  
 (88) Enphase M250 Microinverters  
 to be located beneath each module

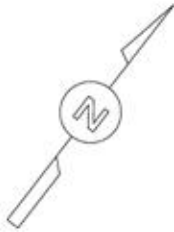
Breaker Panel (point of connection with utility)  
 Lockable Disconnect Switch  
 Existing Utility Meter

**Phase 2**

(85) SolarWorld 285w Solar Modules  
 (85) Enphase M250 Microinverters  
 to be located beneath each module

**Phase 3**

(226) SolarWorld 285w Solar Modules  
 (226) Enphase M250 Microinverters  
 to be located beneath each module



Module Azimuth = 150 Degrees True

Unless Otherwise Specified: Dimensions in inches Tolerances: Fractional ± .001 Angular: Mach ± .001		Site Notes: Conditions as shown, based on Field Survey performed on		Do Not Scale Drawing HIC# 170677	
				<b>FULLERS ENERGY, LLC</b> Phone# 508-696-3006	
				Project: Vineyard Decorators: 835 Airport rd, Edgartown, MA Description: Roof Mounted 124.83 kW (438) Module System Utility Acct# 1528 342 0014	
				Size <b>A4</b>	Drawing No. <b>0001</b>
				Rev <b>C</b>	
Revision B DS 5/12/16 Revision C DS 5/12/16				Material (438) SolarWorld 285w Modules (438) Enphase M250 Microinverters	
				Scale 1 Cad = 10' .1 scale	CAD File: .vc2
				Sheet <b>1 of 1</b>	