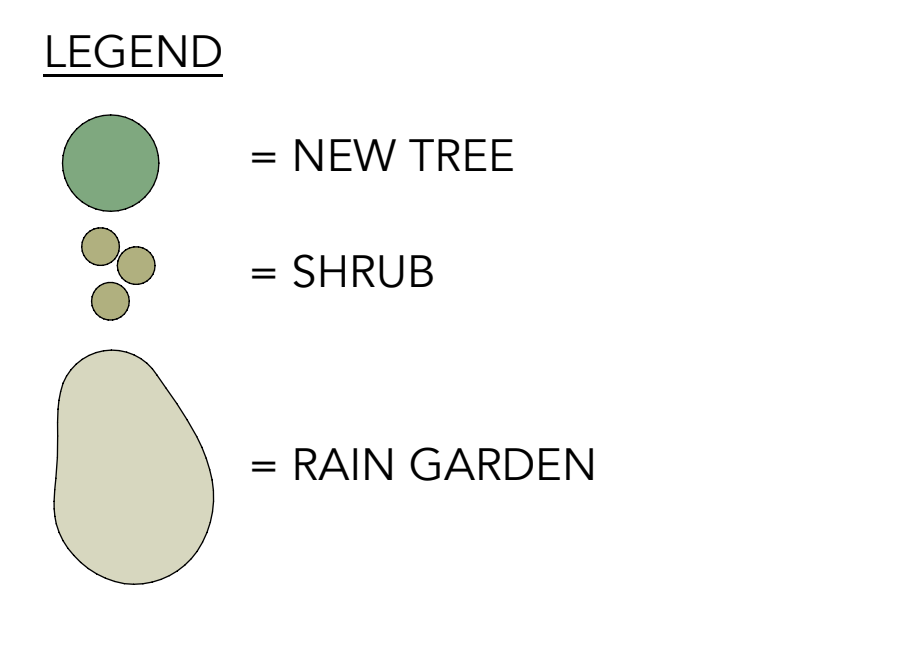


Village Road



CODE	BOTANICAL NAME	COMMON NAME	SIZE	NOTES	QUANTITY
TREES					
AR	<i>Acer rubrum</i> 'Burgundy Belle'	Burgundy Belle Red Maple	3-3.5" cal	B&B	8
ARM	<i>Acer rubrum</i>	Red Maple	12-14' ht	B&B Multi-stem	13
AH	<i>Amelanchier</i> 'Robin Hill'	Robin Hill Serviceberry	2.5-3" cal	B&B	6
CC	<i>Carpinus caroliniana</i>	Musclewood	3-3.5" cal	B&B	3
HV	<i>Hamamelis virginiana</i>	Common Witchhazel	4-5' ht	B&B	8
IO	<i>Ilex opaca</i>	American Holly	5-6' ht	B&B	10
NS	<i>Nyssa sylvatica</i>	Tupelo, Beetiebung	1.5-2" cal	B&B	14
QB	<i>Quercus bicolor</i>	Swamp White Oak	3-3.5" cal	B&B	9
QC	<i>Quercus coccinea</i>	Scarlet Oak	2.5-3" cal	B&B	5
TA	<i>Tilia americana</i> 'Redmond'	Redmond Linden	3-3.5" cal	B&B	12
SHRUBS					
IG	<i>Ilex glabra compacta</i>	Dwarf Inkberry	3 gal	container	30
IVS	<i>Ilex verticillata</i> 'Sparkleberry'	Sparkleberry Deciduous Holly	2 gal	container	50
IVJ	<i>Ilex verticillata</i> 'Jim Dandy'	Jim Dandy Deciduous Holly	2 gal	container	6
MP	<i>Myrica pensylvanica</i>	Bayberry	3 gal	container	58
RC	<i>Rhododendron carolinianum</i>	Carolina Rhododendron	24-30" ht	B&B	30
RA	<i>Rhus aromatica</i>	Fragrant Sumac	3 gal	container	60
VD	<i>Viburnum dentatum</i>	Arrowwood Viburnum	2 gal	container	21
VT	<i>Viburnum trilobum</i>	American Cranberrybush Viburnum	3 gal	container	40
PERENNIALS					
IS	<i>Iris sibirica</i>	Siberian Iris	1 gal	container	35
HH	<i>Hemerocallis hybrid</i> 'Stella d'Oro'	Stella d'Oro Daylily	1 gal	container	34
RAIN GARDEN PERENNIALS					
CS	<i>Carex stricta</i>	Tussock Sedge	plug	18" on center	120
CV	<i>Carex vulpinoidea</i>	Fox Sedge	plug	18" on center	120
EM	<i>Eupatorium maculatum</i>	Joe Pye Weed	plug	18" on center	66
JE	<i>Juncus effusus</i>	Soft Rush	plug	18" on center	120
LC	<i>Lobelia cardinalis</i>	Cardinal Flower	plug	18" on center	130
SA	<i>Scirpus americanus</i>	Three Square	plug	18" on center	120
SC	<i>Scirpus cyperinus</i>	Wool Grass	plug	18" on center	120



PLANTING NOTES

- Planting contractor shall visit site prior to submitting bid to become completely familiar with site conditions.
- No planting will be installed until all grading and construction has been completed in immediate area.
- Contractor to verify all utilities on property and to protect all utilities during excavation for plants.
- If there is a discrepancy between the number of plants shown on the plan and the number of plants shown in plant list, the number of plants shown on plan will take precedence.
- All container material to be grown in container a minimum of 6 months.
- All material shall comply with the latest edition of the American Standard for Nursery Stock, American Association of Nurserymen.
- Contractor shall repair all damage to property from planting operations at no cost to the owner.
- Contractor shall guarantee new plant material through two calendar years from time of provisional acceptance.
- The Landscape Architect will tag all plants at the nursery and inspect them after delivery to the site. All plant materials shall be inspected by the Landscape Architect on site prior to installation.
- All proposed plants shall be located carefully as shown on the plans and the placements shall be approved by Landscape Architect before the plants are installed.
- Spacing of plants is to be based on measurements taken parallel to the ground plane.
- All disturbed areas not to be paved or planted shall be loamed and seeded with no mow fescue seed mix as provided by Prairie Nursery, or approved equal.
- Staking and guying shall be determined by the Landscape Architect on a tree by tree basis. For pricing purposes, provide a per tree unit cost for staking and guying. If staking and guying is required, remove tree wrap, stakes, and guy wires at end of first growing season.
- For tree planting in lawn areas, any disturbed lawn shall be loamed and seeded as necessary.
- Landscape Architect to flag trees to be protected on site.
- Plants to be mulched with 2-3" composted pine bark mulch (natural brown, not dyed).
- Stockpiled or imported topsoil is to be amended with organic matter, lime and fertilizer as recommended by soil test prepared by the University of Massachusetts Soil Testing Laboratory at Amherst. <http://tag.umass.edu/nurseries/soil-plant-nutrient-testing-laboratory/ordering-information-forms>

Issue	Date	Description

MVCS EARLY CHILDHOOD BUILDING
 Village Road, Oak Bluffs, MA

RICHARD JOHNSON LANDSCAPE ARCHITECT®
 PO BOX 746 FALMOUTH MASSACHUSETTS 02541
 ph (508)495-0021 <http://rtjarch.com>

All rights reserved. The drawings, designs, and ideas embodied therein are property of Richard Johnson Landscape Architect and shall not be copied, reproduced, or disclosed in connection with any work other than the project for which they have been prepared, in whole or part, without prior written authorization of Richard Johnson Landscape Architect.

	Scale:	1"=20'
	Date:	JAN 10, 2020
	Drawn by:	RTJ
	Checked by:	RTJ