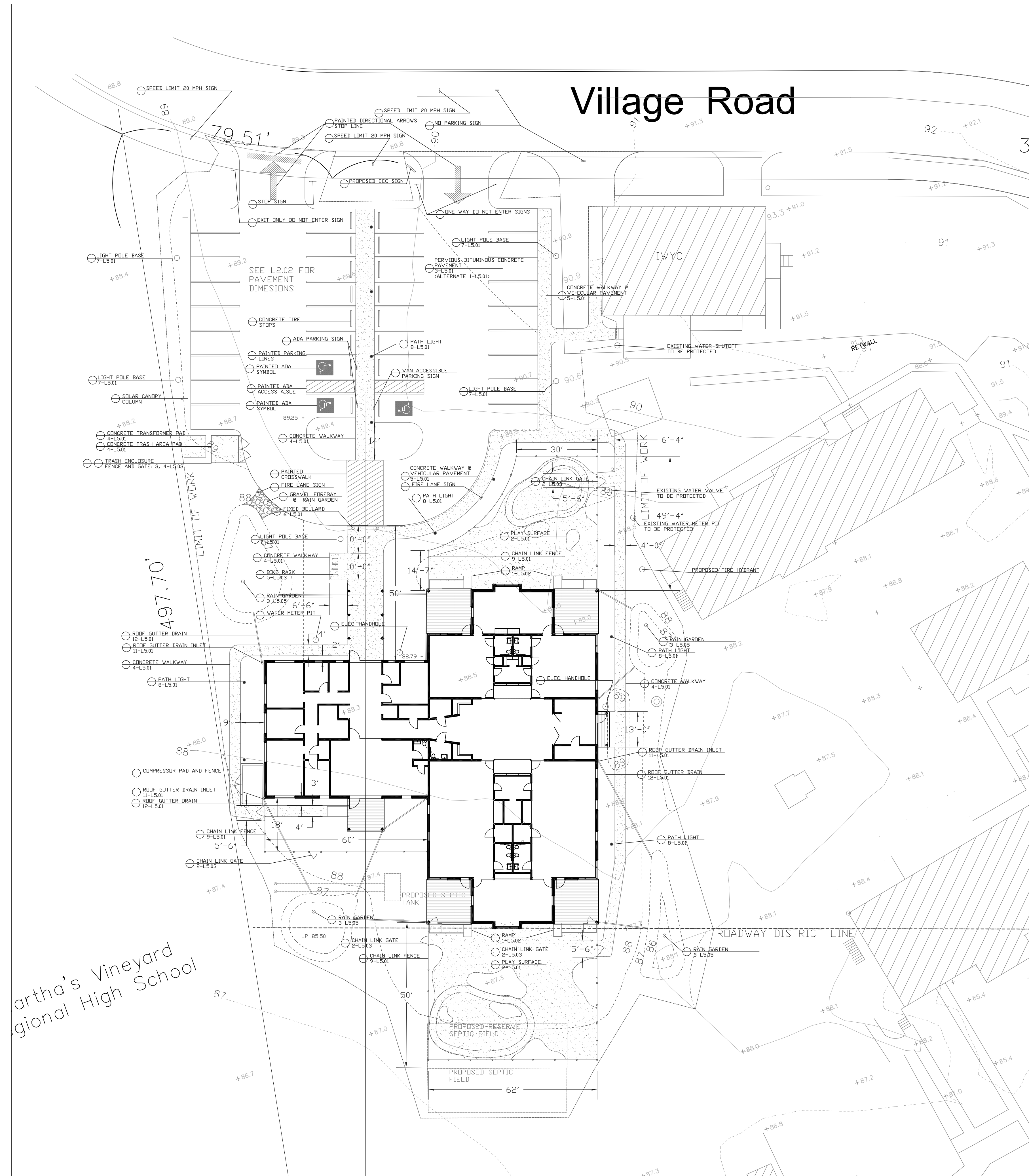


Village Road



LAYOUT NOTES

1. Locate, protect, and maintain bench marks, monuments, control points, and project engineering reference points. Re-establish disturbed or destroyed items at Contractor's expense.
2. Examine the areas and conditions under which site work is performed. Report any discrepancies with the plan to the Landscape Architect. Do not proceed with the work until unsatisfactory conditions are corrected.
3. Report discrepancies in drawings or specifications to the Landscape Architect for clarifications and adjustments before commencing work. Any deviations or changes from these drawings without written acceptance of the Landscape Architect shall oblige the Landscape Architect of any and all responsibility of said deviation and change.
4. Written dimensions take precedence over scaled dimensions.
5. Dimensions indicated on plans are for horizontal control and are accurate if measured on a level line. Measure horizontal control dimensions on a level line, not parallel with ground slope.
6. All dimensions taken from vertical surfaces, i.e. curbs & walls, are understood to be measured from the face of the vertical element unless otherwise specified.
7. All angles assumed to be 90° unless otherwise specified.
8. Pool and wall dimensions were measured in the field and are only approximate; an existing conditions survey was not available. Verify all dimensions in the field.

Issue	Date	Description

MVCS EARLY CHILDHOOD BUILDING
 Village Road, Oak Bluffs, MA

RICHARD JOHNSON LANDSCAPE ARCHITECT®
 PO BOX 746 FALMOUTH MASSACHUSETTS 02541
 ph (508)495-0021 http://rtjarch.com

All rights reserved. The drawings, designs, and ideas embodied therein are property of Richard Johnson Landscape Architect and shall not be copied, reproduced, or disclosed in connection with any work other than the project for which they have been prepared, in whole or part, without prior written authorization of Richard Johnson Landscape Architect.

	Scale: 1"=20'	
	Date: Jan 10, 2020	
	Drawn by: RTJ	
	Checked by: RTJ	

LAYOUT AND MATERIALS PLAN L2.00

Artha's Vineyard Regional High School