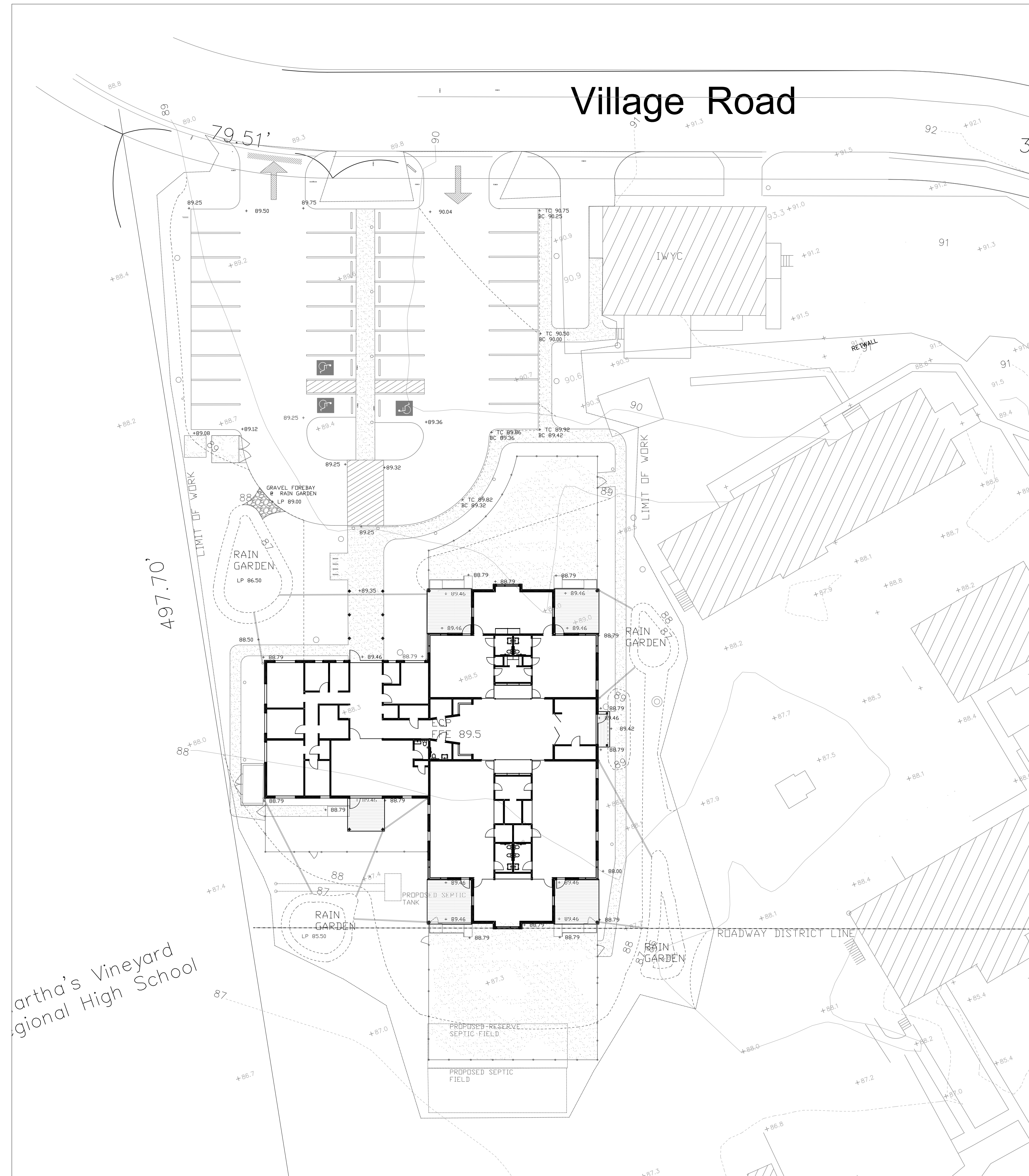


Village Road



GRADING NOTES

1. Install staked haybale siltation fence at edge of proposed grading as shown. Maintain haybale fence in good condition throughout project.
2. The locations of utilities shown on the plan are approximate. The contractor shall call Dig-Safe to verify the precise location of all utilities on-site before initiating demolition activities and protect existing utilities throughout construction. Any utilities damaged by construction activities will be repaired by the contractor at no cost to the owner.
3. Provide samples of materials proposed for use for the review of the Landscape Architect, including fill, topsoil, planting soil, and pavements. Suitable excavated materials removed to accommodate new construction may be used as fill material subject to the approval of the Landscape Architect. Soil test reports for topsoil shall be provided by the contractor through the University of Massachusetts soil testing laboratory.
4. Promptly notify the Landscape Architect of unexpected sub-surface conditions. Contractor to set grade stakes showing lines and elevations for review and approval by the Landscape Architect prior to rough grading.
5. Perform grading within contract Limits of Construction, including adjacent transition areas, to new elevations, levels, profiles, and contours indicated. Provide subgrade surfaces parallel to finished surface grades. Provide uniform levels and slopes between new elevations and existing grades. Grade surfaces to assure areas drain away from structures and to prevent ponding and pockets of surface drainage.
6. Topsoil to be installed shall be natural, friable, fertile soil characteristic of productive soil in the vicinity, reasonably free of stones, clay lumps, roots, and other foreign matter. Do not use muddy topsoil. Place during dry weather. Allow for 6" average depth of topsoil screened for lawn areas, and 12" depth at planting areas, except as otherwise indicated on the drawings.
7. Fine grade topsoil eliminating rough and low areas to ensure positive drainage. Maintain levels, profiles, and contours of subgrades.
8. Protect finish graded areas from traffic and erosion. Keep free of trash and debris. Repair and re-establish grades in settled, eroded, and damaged areas. Where completed areas are disturbed by construction operations or adverse weather, scarify, re-shape, and compact to required density.
9. Upon completion of earthwork operation, clean areas within contract limits, remove tools, and equipment. Provide site clear, clean, free of debris, and suitable for further site work operations.

Issue	Date	Description

MVCS EARLY CHILDHOOD BUILDING
 Village Road, Oak Bluffs, MA

RICHARD JOHNSON LANDSCAPE ARCHITECT®
 PO BOX 746 FALMOUTH MASSACHUSETTS 02541
 ph (508)495-0021 <http://rtjarch.com>

All rights reserved. The drawings, designs, and ideas embodied therein are property of Richard Johnson Landscape Architect and shall not be copied, reproduced, or disclosed in connection with any work other than the project for which they have been prepared, in whole or part, without prior written authorization of Richard Johnson Landscape Architect.

	Scale:	1"=20'
	Date:	JAN 10, 2020
	Drawn by:	RTJ
	Checked by:	RTJ