

Solar Invictus 4

Location:
223 Edgartown -
Vineyard Haven Road,
Oak Bluffs, MA

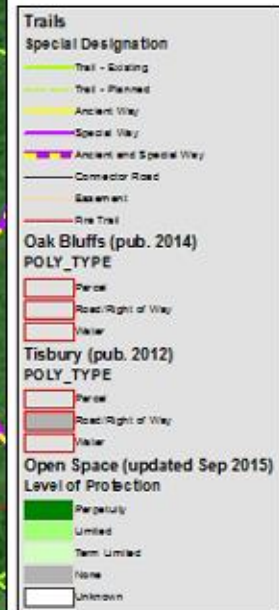
Map ID: 40-4

Land Owner: Bayes
Norton Farm, Inc.
P.O. Box 4001
Vineyard Haven , MA
02568



C.R. 4 – 2016 Bayes Norton Solar Farm

C.R. 4 - 2016
Bayes Norton
Solar Farm



1 inch = 500 feet

0 150 300 600 Feet

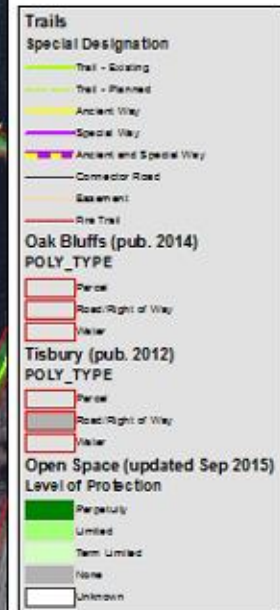


Disclaimer: The map is for planning purposes only. The data are not adequate for boundary determination or business transaction. The user of this map is responsible for how these data are used or misused by the end user.

Created by Paul Cole
Date: 04-01-2016

C.R. 4 – 2016 Bayes Norton Solar Farm

C.R. 4 - 2016
Bayes Norton
Solar Farm



1 inch = 300 feet

0 75 150 300 Feet

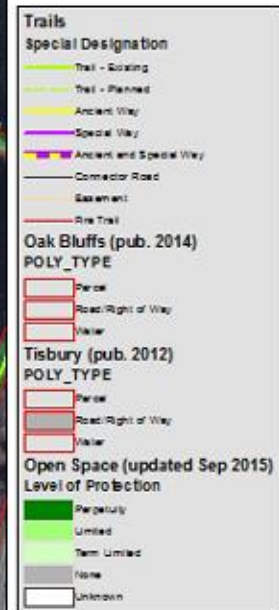


Disclaimer: This map is for planning purposes only. The data are not adequate for boundary determination or easement investigation. The sun line of this is not approved for use in these data are used or misused by the end user.

Created by: Paul Dole
Date: 10/10/2016

C.R. 4 – 2016 Bayes Norton Solar Farm

C.R. 4 - 2016
Bayes Norton
Solar Farm



1 inch = 300 feet

0 75 150 300 Feet



Disclaimer: The map is for planning purposes only. The data are not adequate for boundary determination or easement investigation. The user of this map is responsible for how these data are used or misused by the end user.

Created by Paul Dine

July 2016

Zoning – R-3

C.R. 4 - 2016

- Trails**
- Special Designation**
- Trail - Existing
 - Trail - Planned
 - Ancient Way
 - Special Way
 - Ancient and Special Way
 - Connector Road
 - Segment
 - Rite Trail

Oak Bluffs (pub. 2014)

POLY_TYPE

- Parcel
- Road/Right of Way
- Water

Tisbury (pub. 2012)

POLY_TYPE

- Parcel
- Road/Right of Way
- Water

Open Space (updated Sep 2015)

Level of Protection

- Perpetuity
- Limited
- Term Limited
- None
- Unknown

Oak Bluffs Zoning

ZONE CODE

- B1 Commercial Business
- B2 Small Scale Business
- R1 Residential (min 10,000 sq ft)
- R2 Residential (min 20,000 sq ft)
- R3 Residential (min 60,000 sq ft) 2012
- R4 Residential (min 120,000 sq ft)
- HC Health Care
- NZ Not Zoned

1 inch = 300 feet

0 75 150 300 Feet



Disclaimer: The map is for planning purposes only. The data are not adequate for boundary determination or easement investigation. The user of this map is responsible for how these data are used or misused by the end user.

Created by: Paul Cole
Date: 04/21/2016

Lagoon Pond Watershed

Head of Lagoon Sub-Watershed

C.R. 4 - 2016
Bayes Norton
Solar Farm



1 inch = 300 feet

0 75 150 300 Feet



Disclaimer: The map is for planning purposes only. The data are not adequate for boundary determination or purposes of litigation. The user of this map is responsible for how these data are used or misused by the end user.

Created by: Paul Dine
Date: 04/22/2016
Scale: 1 inch = 300 feet

NHESP Habitat (hatched area)

C.R. 4 - 2016 Bayes Norton Solar Farm



1 inch = 300 feet

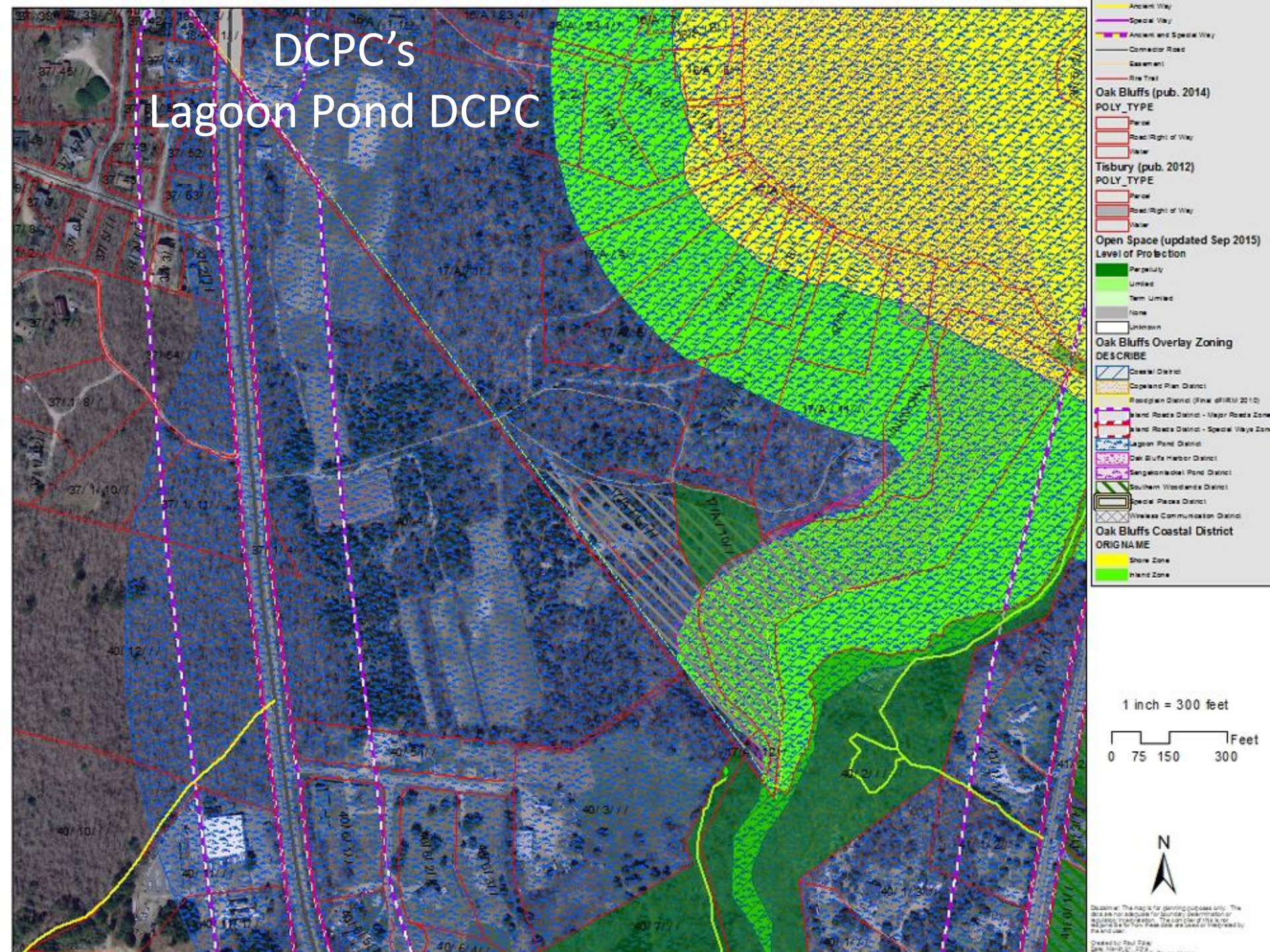
0 75 150 300 Feet



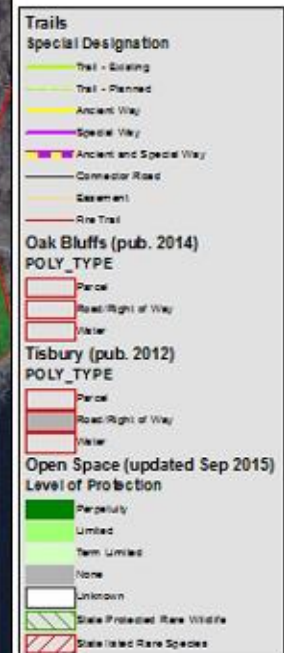
Disclaimer: This map is for planning purposes only. The data are not adequate for boundary determination or easement investigation. The user of this map is responsible for any errors or omissions. The user is not responsible for any errors or omissions.

Created by: Paul Dine
Date: 04/22/2016
Scale: 1 inch = 300 feet

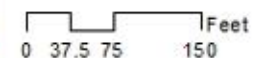
DCPC's Lagoon Pond DCPC



C.R. 4 - 2016 Bayes Norton Solar Farm



1 inch = 150 feet



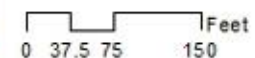
Disclaimer: This map is for planning purposes only. The data are not adequate for boundary determination or purposes of insurance. The scale of this map is not warranted to be more than that shown or implied by the scale.

Created by Paul Dole
Date: 10/10/2016

C.R. 4 - 2016 Bayes Norton Solar Farm

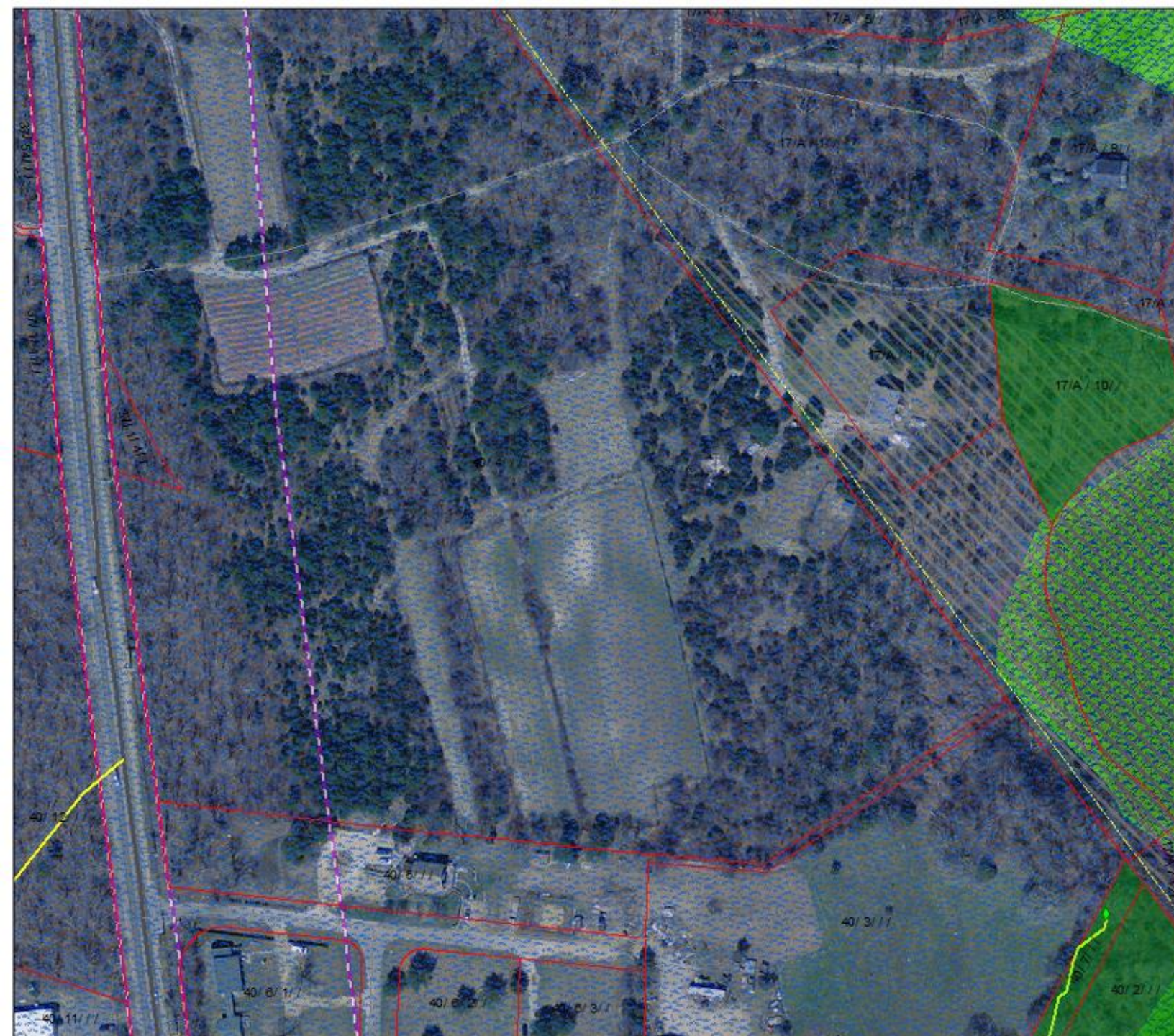
Trails	
Special Designation	
	Trail - Existing
	Trail - Planned
	Ancient Way
	Special Way
	Ancient and Special Way
	Connector Road
	Segment
	One Trail
Oak Bluffs (pub. 2014)	
POLY_TYPE	
	Parcel
	Road/Right of Way
	Water
Tisbury (pub. 2012)	
POLY_TYPE	
	Parcel
	Road/Right of Way
	Water
Open Space (updated Sep 2015)	
Level of Protection	
	Perpetuity
	Limited
	Term Limited
	None
	Unknown
	State Protected Rare Wildlife
	State Listed Rare Species

1 inch = 150 feet



Disclaimer: The map is for planning purposes only. The data are not adequate for boundary determination or purposes of insurance. The user of this map is not responsible for any loss that may be incurred by the user.

Created by: Paul D. Dyer
Date: 10/10/2016



Ancient Way
 Special Way
 Ancient and Special Way
 Connector Road
 Easement
 Fire Trail

Oak Bluffs (pub. 2014)
 POLY_TYPE
 Parcel
 Road/Right of Way
 Water

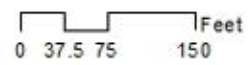
Tisbury (pub. 2012)
 POLY_TYPE
 Parcel
 Road/Right of Way
 Water

Open Space (updated Sep 2015)
 Level of Protection
 Perpetuity
 Limited
 Term Limited
 None
 Unknown

Oak Bluffs Overlay Zoning
 DESCRIBE
 Coastal District
 Copeland Plan District
 Regional District (Final 4/18/10 2010)
 Island Roads District - Major Roads Zone
 Island Roads District - Special Ways Zone
 Legion Pond District
 Oak Bluffs Harbor District
 Sengstacke Pond District
 Southern Woodlands District
 Special Places District
 Wireless Communication District

Oak Bluffs Coastal District
 ORIGINAME
 Shore Zone
 Inland Zone

1 inch = 150 feet



Disclaimer: This map is for planning purposes only. The data are not adequate for boundary determination or legal proceedings. The user of this map agrees to hold the user harmless for any use or misuse of the data.

Created by: Paul Dine
 Date: 10/10/2014

Head of Pond Road

Oak Bluffs
Assessor Parcel 40-4
21.54 acres

Edgartown-Vineyard Haven Road

Elisha Lane

proposed transformer
and electrical service

proposed 5000 KW array



Location Map (see notes)



Ass. Pct. 37-1-4

Ass. Pct. 37-1-4

Ass. Pct. 40-12

Ass. Pct. 11-1-1

360' to Upper Lagoon Pond

Ass. Pct. 40-9

Ass. Pct. 40-3

Solar Array Plan
Oak Bluffs, Mass.
Prepared For
Solar Invictus 4, LLC / Bayes Norton Farm
Scale 2" = 40' February 9, 2011
Schuchman, Bartlett & Hoehn Inc.
Land Surveying & Civil Engineering
12 Surveyor's Lane, Box 338
Vineyard Haven, Mass.
508-693-7281
www.sbfinc.net
REV 11080

Sheep to
graze beneath
the solar
panels



Sheep to
graze beneath
the solar
panels





MAX POWER CS6X-310 | 315 | 320P

High quality and reliability in all Canadian Solar modules is ensured by 14 years' experience in module manufacturing, well-engineered module design, stringent BOM quality testing, an automated manufacturing process and 100% EL testing.

KEY FEATURES

-  Excellent module efficiency up to 16.68%
-  Outstanding low irradiance performance: 96.0%
-  Positive power tolerance up to 5 W
-  No. 1 PTC High PTC rating up to 91.97%
-  IP67 junction box for long-term weather endurance
-  Heavy snow load up to 5400 Pa wind load up to 2400 Pa
-  Salt mist, ammonia and blowing sand resistance, apply to seaside, farm and desert environments

25
years

insurance-backed warranty
non-cancelable, immediate warranty insurance
linear power output warranty

10
years

product warranty on materials
and workmanship

MANAGEMENT SYSTEM CERTIFICATES*

ISO 9001:2008 / Quality management system
ISO/TS 16949:2009 / The automotive industry quality management system
ISO 14001:2004 / Standards for environmental management system
OHSAS 18001:2007 / International standards for occupational health & safety

PRODUCT CERTIFICATES*

IEC 61215 / IEC 61730: VDE / MCS / CE / SIL / CEC AU / CQC / INMETRO
UL 1703 / IEC 61215 performance: CEC listed (US)
UL 1703: CSA / IEC 61701 ED2: VDE / IEC 62716: VDE / IEC 60068-2-68: SGS
PV CYCLE (EU) / UNI 9177 Reaction to Fire: Class 1



* As there are different certification requirements in different markets, please contact your local Canadian Solar sales representative for the specific certificates applicable to the products in the region in which the products are to be used.

CANADIAN SOLAR INC. is committed to providing high quality solar products, solar system solutions and services to customers around the world. As a leading manufacturer of solar modules and PV project developer with about 10 GW of premium quality modules deployed around the world since 2001, Canadian Solar Inc. (NASDAQ: CSIQ) is one of the most bankable solar companies worldwide.

CANADIAN SOLAR INC.

545 Speedvale Avenue West, Guelph, Ontario N1K 1E6, Canada, www.canadiansolar.com, support@canadiansolar.com



SolarEdge Three Phase Inverters for the 277/480V Grid for North America

SE10KUS / SE20KUS / SE33.3KUS



INVERTERS

The best choice for SolarEdge enabled systems

- Integrated arc fault protection for NEC 2011 690.11
- Rapid shutdown for NEC 2014 690.12
- Superior efficiency (98.5%)
- Outdoor and indoor installation
- Built-in module-level monitoring
- Internet connection through Ethernet or Wireless
- Small, lightweight and easy to install on provided bracket
- Fixed voltage inverter, DC/AC conversion only
- Integrated Safety Switch and DC fuses (plus & minus)



SolarEdge Power Optimizer

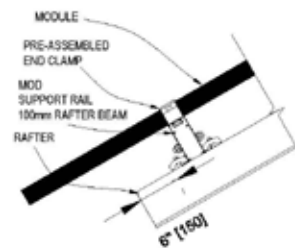
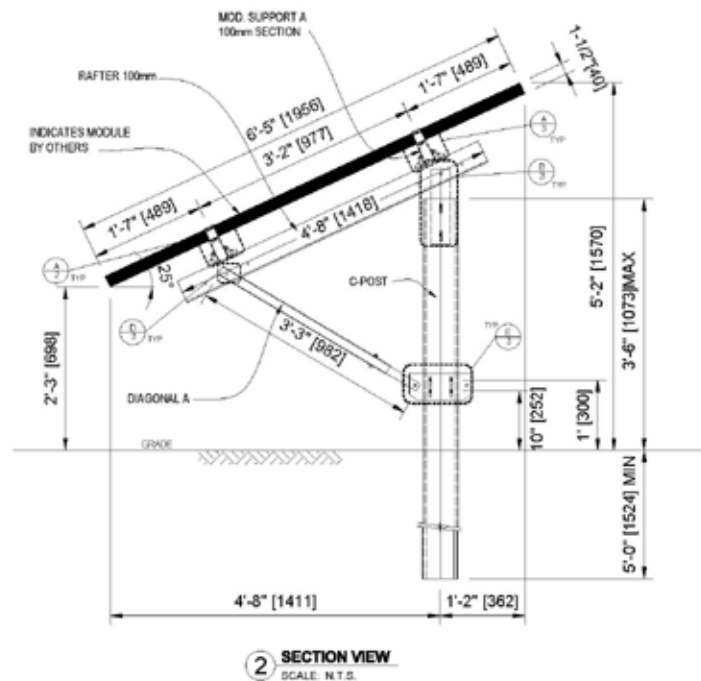
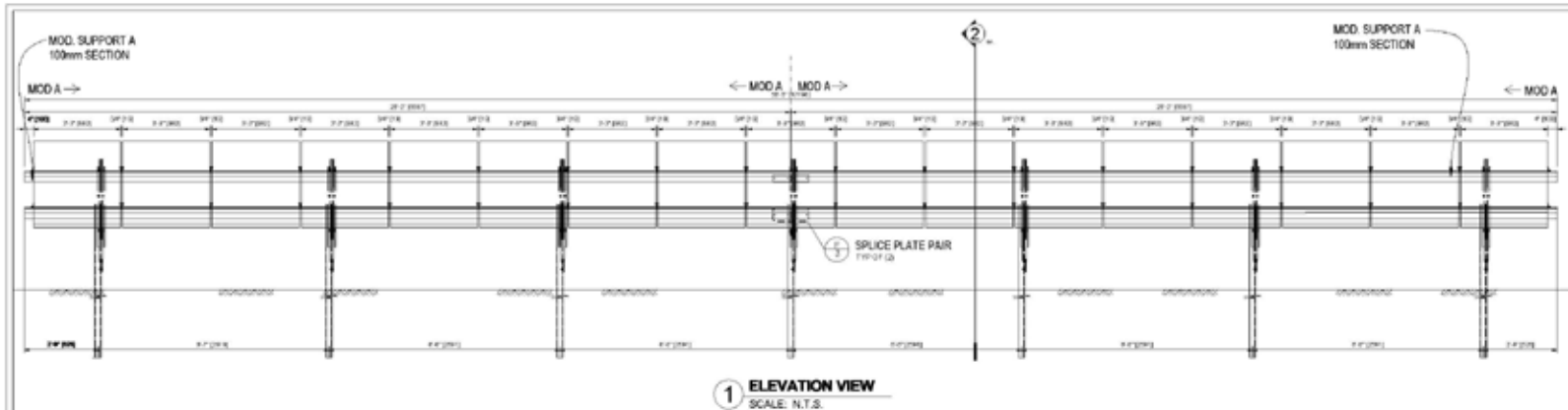
Module Add-On for Commercial Installations
for North America P600 / P700



POWER OPTIMIZER

PV power optimization at the module-level
The most cost effective solution for commercial and large field installations

- Up to 25% more energy
- Superior efficiency (99.5%)
- Balance of System cost reduction; 50% less cables, fuses and combiner boxes, over 2x longer string lengths possible
- Fast installation with a single bolt
- Next generation maintenance with module-level monitoring
- Module-level voltage shutdown for installer and firefighter safety
- Use with two PV modules connected in series



DETAIL DESCRIPTION BOLTED CONNECTION M10X35



DETAIL DESCRIPTION BOLTED CONNECTION M10X80

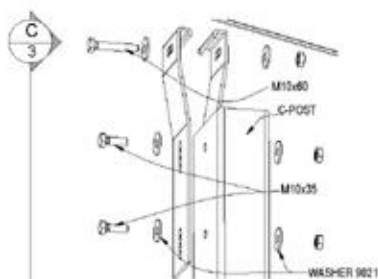


NOTES:

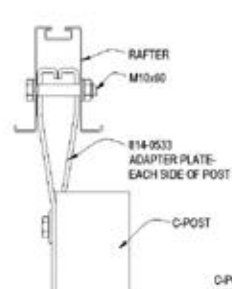
1. ALL FRAME MEMBERS SHALL BE STEEL OR ALUMINUM WITH THE ALLOY/TEMPER AND STRENGTH AS INDICATED ON SHEET 1.
2. ALL DIMENSIONS ARE IN FEET-INCHES (MILLIMETERS, UNLESS OTHERWISE NOTED).

LEGEND:

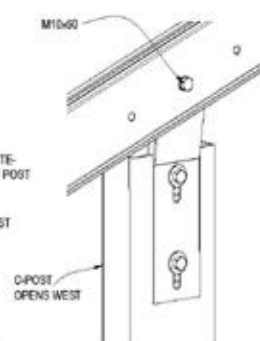
MOD	INDICATES MODULE SUPPORT RAIL TYPE
006-XXX	INDICATES ARTICLE NUMBER
M00000	INDICATES BOLT SIZE
OH	OPPOSITE HAND
TYP	TYPICAL



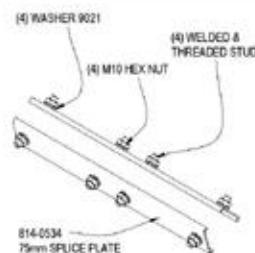
B ADAPTER PLATES TO C-POST
SCALE: N.T.S.



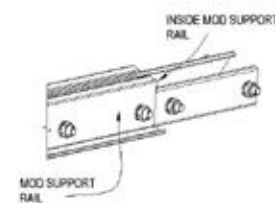
C ADAPTER PLATES TO RAFTER
SCALE: N.T.S.



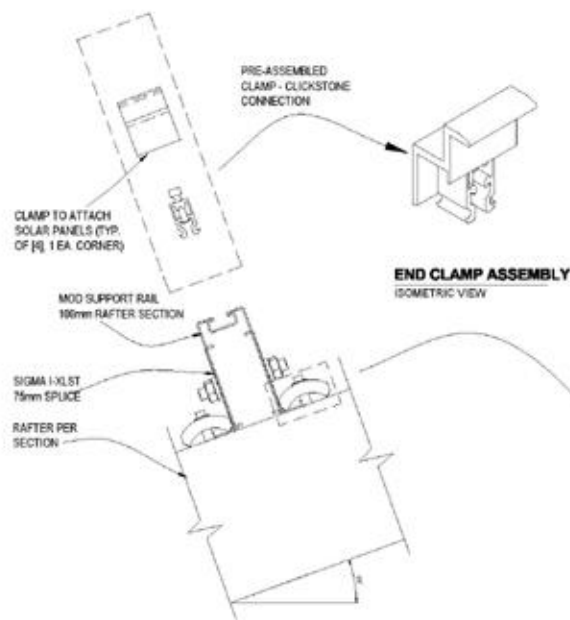
ISOMETRIC @ ADAPTER PLATES
SCALE: N.T.S.



F SPLICE PLATE DETAIL
SCALE: N.T.S.



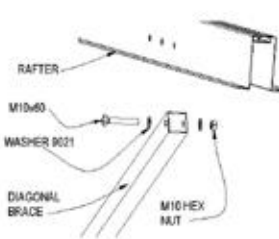
CONNECTION @ SPLICE
SCALE: N.T.S.



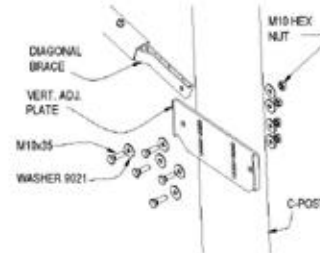
A EXPLODED RAFTER CONNECTION
SCALE: N.T.S.

END CLAMP ASSEMBLY
ISOMETRIC VIEW

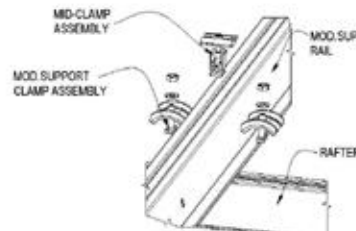
MODULE SUPPORT CLAMP
ISOMETRIC VIEW



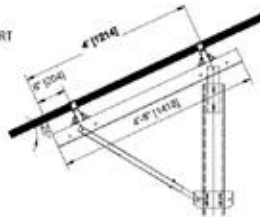
D CONNECTION @ DIAGONAL
SCALE: N.T.S.



E CONNECTION @ DIAGONAL
SCALE: N.T.S.



CONNECTION @ CLAMPING
SCALE: N.T.S.



CONNECTION SPACING @ RAFTER
SCALE: N.T.S.



ENGINEER'S SEAL/STAMP

249kW SOLIGENT - MARTHA'S VINEYARD
MARTHA'S VINEYARD, MA
SIGMA IXL-STEEL 1x17P
(1954x982x40mm) 25°

REVISED - 04/05 15/011
DATE: 1/22/2018
DRAWING DATA
CHECKED BY: LEDA
SUBMITTED
SUBMITTED
SHEET 3 of 3

DETAILS

3



Head of Pond Road

Oak Bluffs
Assessor Parcel 40-4
21.5+/- acres

Edgartown-Vineyard Haven Road

Elisha Lane

proposed transformer
and electrical service

proposed 5000 KW array



Location Map (See notes)



Ass. Pct. 27-1-4

Ass. Pct. 27-1-4

Ass. Pct. 40-12

Ass. Pct. 11-1-1

380' to Upper Lagoon Pond

line of mapped habitats

line of mapped habitats

line of mapped habitats

Ass. Pct. 40-9

Ass. Pct. 40-3

Solar Array Plan
Oak Bluffs, Mass.
Prepared For
Solar Invictus 4, LLC / Bayes Norton Farm
Scale 2" = 40' February 8, 2011
Schubert, Bartlett & Hoehn Inc.
Land Surveying & Civil Engineering
12 Surver's Lane, Box 338
Vineyard Haven, Mass.
508-693-7281
www.sbfinc.net
REV 11080

Solar Invictus 4

Location:

223 Edgartown -
Vineyard Haven Road,
Oak Bluffs, MA

Map ID: 40-4

Land Owner: Bayes
Norton Farm, Inc.
P.O. Box 4001
Vineyard Haven , MA
02568

