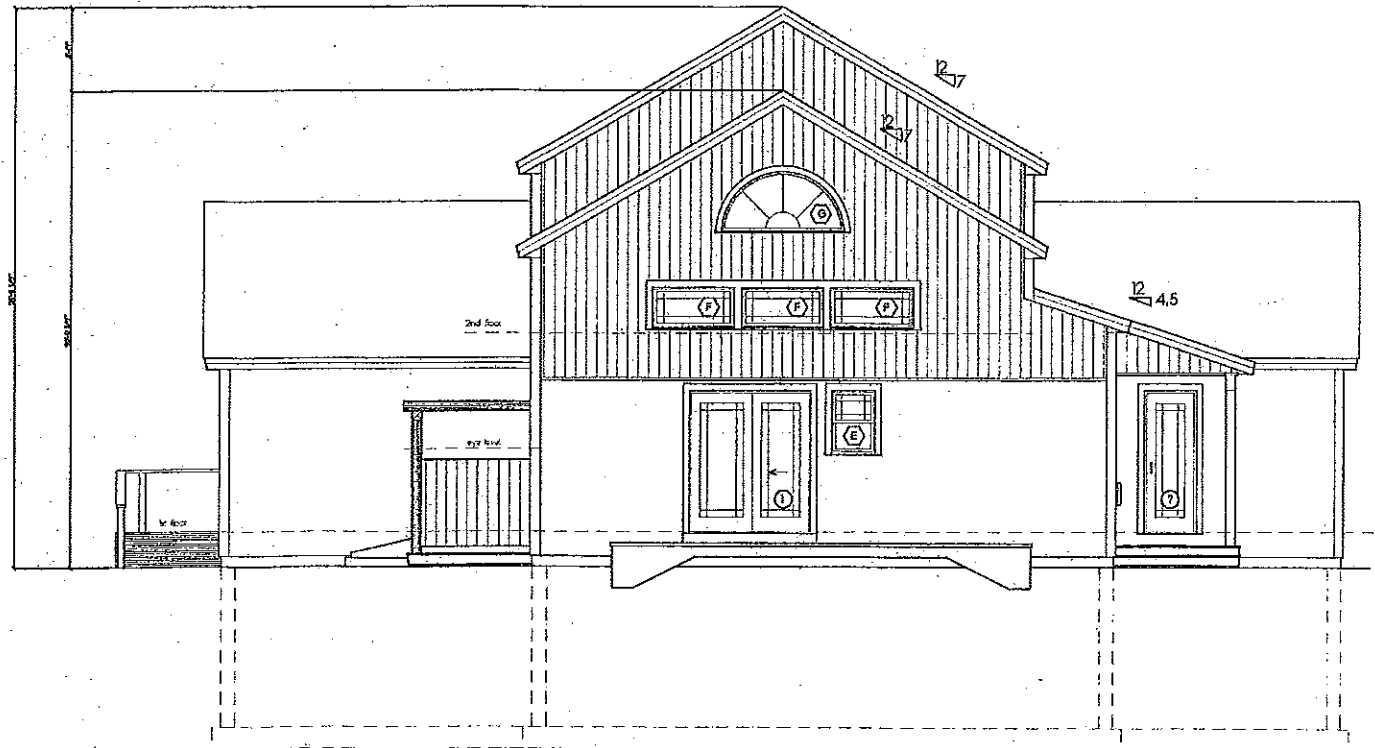


2 North Elevation
A202 VICKI THURBER

1/4" = 1'-0"



1 East Elevation
A202 VICKI THURBER

1/4" = 1'-0"

RECEIVED
FEB 24 2020

ISSUE	DATE	ISSUE	DATE	REVISION

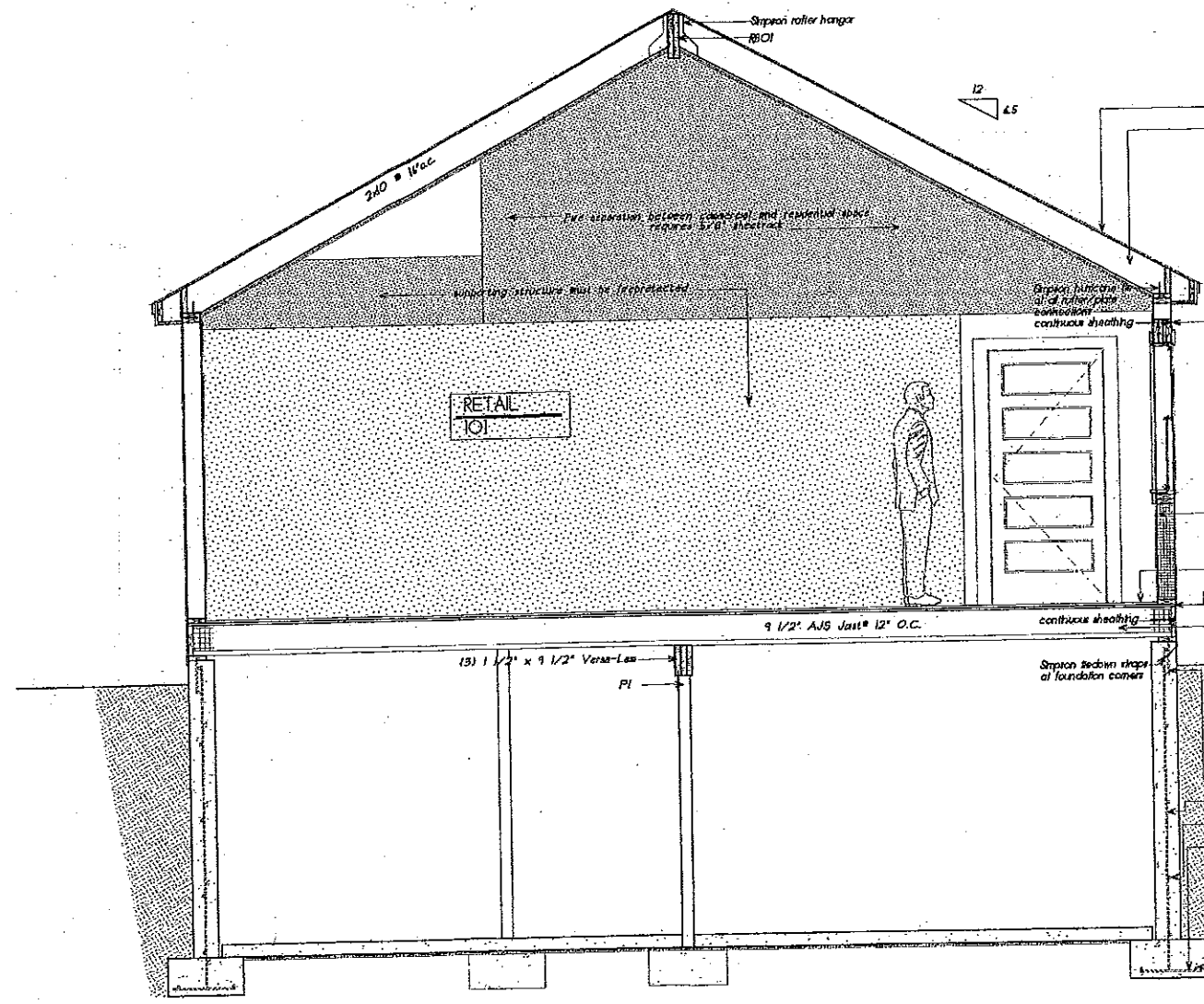
VICKI THURBER
Assessor Map 7, Parcel 50
WEST TUNNICLIFFE, VA

ELEVATIONS

SCALE 1/4" = 1'-0"

A202

+15'-10" TOP OF ROOF
 +10'-2" TOP OF WALL
 +10'-10 1/2" TOP OF WOOD ROUGH DRESSING
 +10'-00" TOP OF 1st FLOOR SLAB/FLOOR
 +10'-0 1/4" TOP OF WALL
 +10'-4 3/4" FINISHED GRADE
 +10'-2 1/4" TOP OF FOOTING



TYPICAL ROOF ASSEMBLY

- min 30 yr. architectural grade asphalt shingles woven valleys
- 30# tar felt
- gauge ice & water barrier at all plane changes and roof edges
- aluminum drip-edge at all roof edges
- Advantech Zip System 5/8" T&G roof sheathing
- 2 x rafters, 16" o.c. as noted
- minimum R17 insulation
- b3 strapping
- 1/2" GHB

TYPICAL WALL ASSEMBLY

- vertical board and/or horizontal lag siding
- Advantech Zip System 7/16" wall sheathing, taped seams applied vertically, continuous from sill to top plate
- 2x6 wall framing
- minimum R23 insulation
- 1/2" or 5/8" GHB as noted
- FOLLOW MANUFACTURER'S DIRECTIONS FOR ALL WINDOW INSTALLATION AND FLASHING

TYPICAL FLOOR ASSEMBLY

- finish floor by owner
- Advantech subfloor, glued and nailed to floor framing
- AJS Floor Joist as noted
- minimum R17 insulation

TYPICAL FOUNDATION WALL ASSEMBLY

- min 2 layers asphaltic dampproofing
- 6" poured concrete wall
- 12" air anchors, 3" o.c. and max 1' from ends
- #5 vertical rebar 24" o.c.
- #5 horizontal rebar 24" o.c.
- #5 hooks 24" o.c. alternate hooks
- 2 #5 rebar continuous in footing

TYPICAL BASEMENT SLAB ASSEMBLY

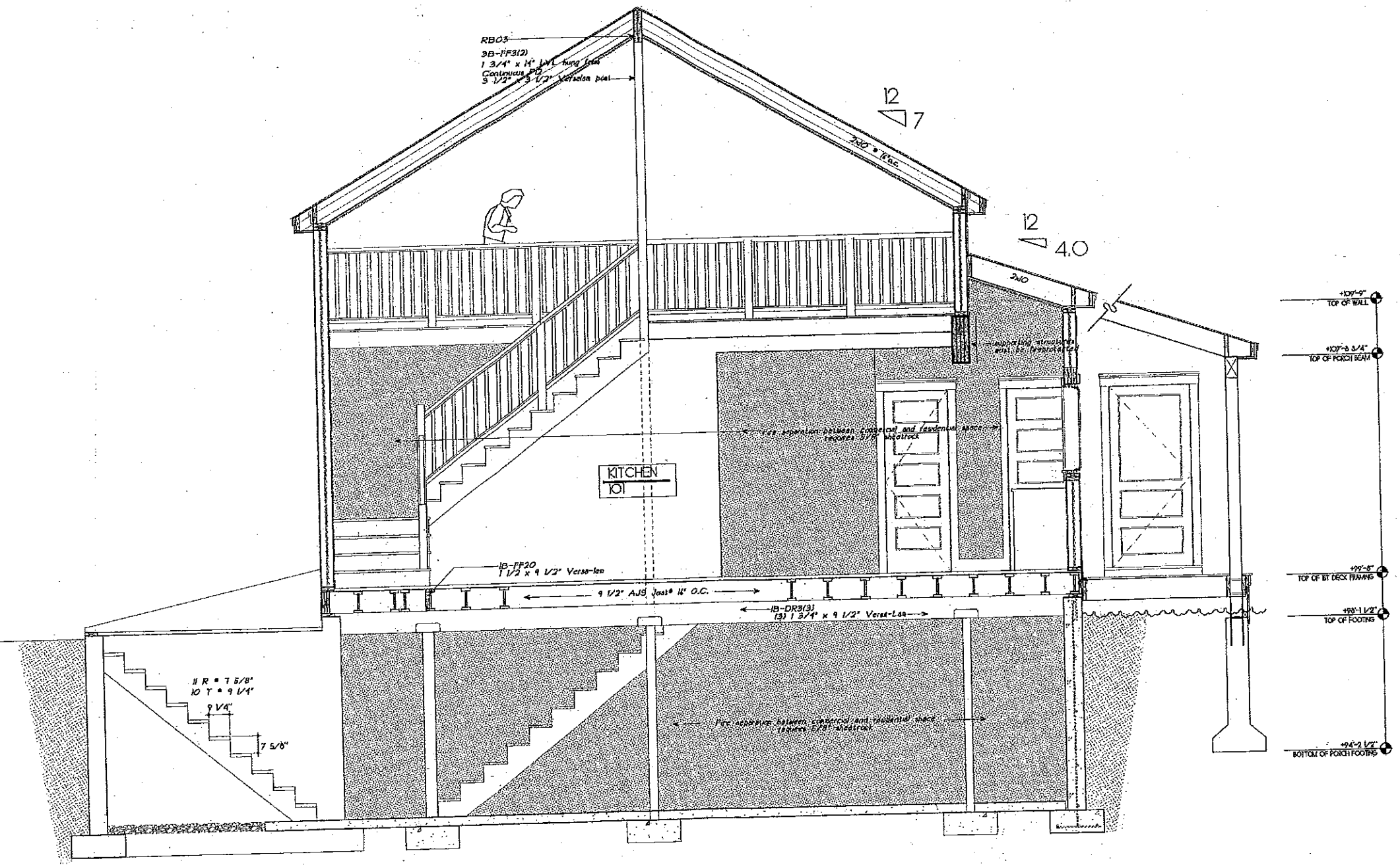
- 4" poured concrete slab, tied welded wire mesh
- minimum 1" high compression rigid foam insulation tape seams
- 4" clean compacted sand

Section A
THURBER

ISSUE	DATE	ISSUE	DATE	REVISION

VICKI THURBER
 Assessor Map 7, Parcel 50
 WEST TOWN, IN.
 SECTION
 SCALE 1/2" = 1'-0"
 A301

+10'-1 1/2"
 TOP OF RICE
 +10'-0"
 TOP OF 2ND FLOOR WALL
 +10'-0"
 TOP OF 2ND FLOOR RBFLOOR
 +10'-0 00"
 TOP OF 1ST FLOOR RBFLOOR
 +9'-4 1/4"
 TOP OF WALL
 +9'-4 1/4"
 FINISH GRADE
 +9'-2 1/4"
 TOP OF FOOTING



+10'-9"
 TOP OF WALL
 +10'-8 3/4"
 TOP OF PORCH BEAM
 +9'-0"
 TOP OF 1ST DECK FLOOR
 +9'-1 1/2"
 TOP OF FOOTING
 +9'-2 1/2"
 BOTTOM OF PORCH FOOTING

ISSUE	DATE	ISSUE	DATE	REVISION	REVISION

VICKI THURBER
 Assessor Map 7, Parcel 50
 WEST TOWN, IA

SECTION

SCALE 1/2" = 1'-0"

A304

1 Section D
 THURBER

RECEIVED
 FEB 24 2020