

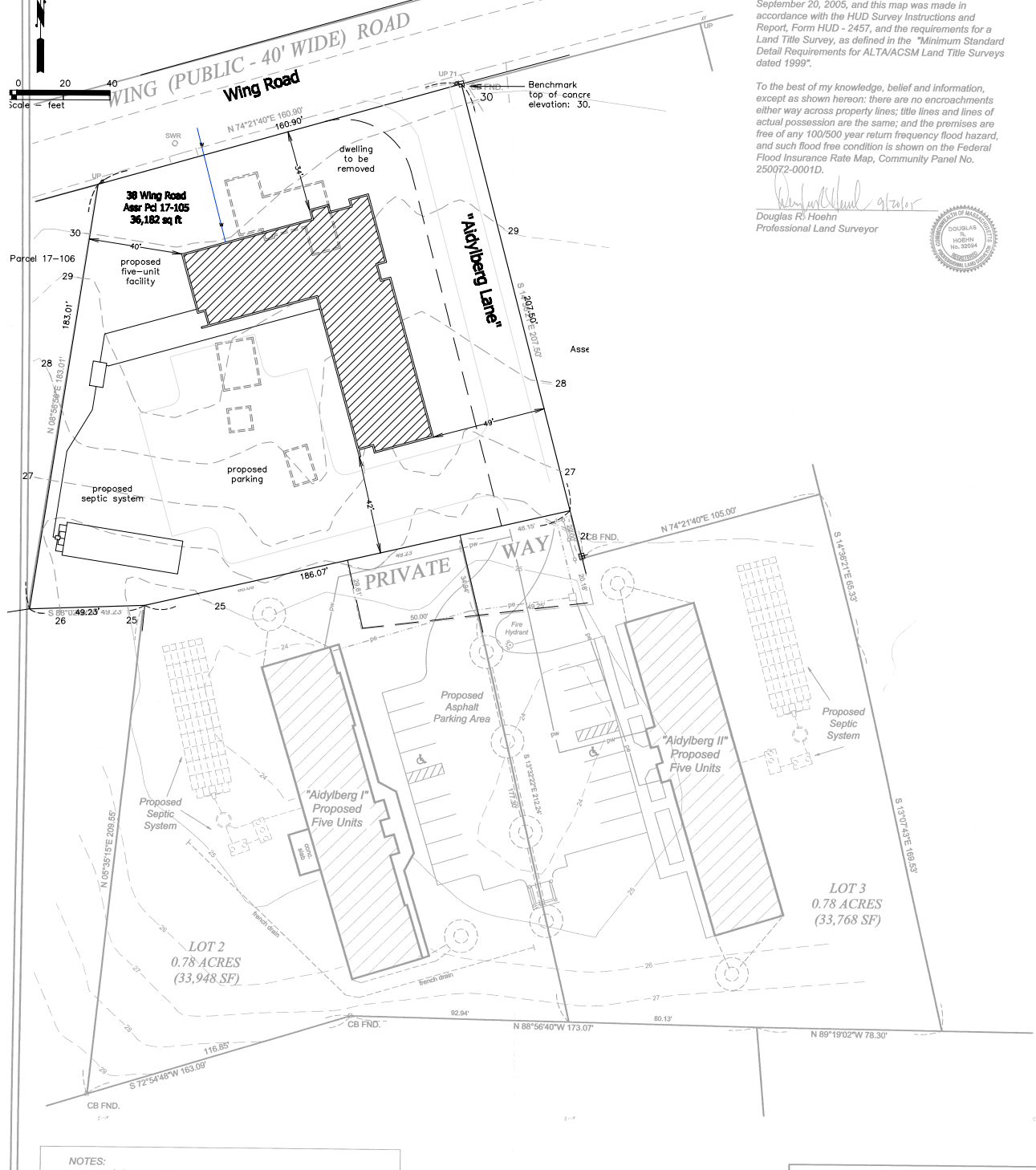
- Notes:
1. Locus lies within the Oak Bluffs R-2 Zoning District
 2. Required lot size: 20,000 sq ft
 3. Required property line setbacks: 25'-20'-20'

SURVEYOR'S CERTIFICATION

I hereby certify to the U.S. Department of Housing and Urban Development (HUD), Aidylberg II, Inc., Island Elderly Housing Inc., Community Economic Development Assistance Corporation (CEDAC), Commonwealth Land Title Insurance Company, and the law offices of Marcia Mulford Cini: Schofield, Barbini & Hoehn Inc. made an on the ground survey per record description of the land shown hereon located in Oak Bluffs, Dukes County, Mass., on September 20, 2005, and this map was made in accordance with the HUD Survey Instructions and Report, Form HUD-2457, and the requirements for a Land Title Survey, as defined in the "Minimum Standard Detail Requirements for ALTA/ACSM Land Title Surveys dated 1999".

To the best of my knowledge, belief and information, except as shown hereon: there are no encroachments either way across property lines; title lines and lines of actual possession are the same; and the premises are free of any 100/500 year return frequency flood hazard, and such flood free condition is shown on the Federal Flood Insurance Rate Map, Community Panel No. 250072-0001D.

Douglas R. Hoehn
 Douglas R. Hoehn
 Professional Land Surveyor



- NOTES:**
- w- existing water lines
 - e- existing underground electric and utility lines
 - pw- proposed water lines
 - pe- proposed underground electric and utility lines
 - proposed 14 ft. wide by 6 ft. deep leaching basins
- * Specific water line location and specifications to be confirmed with Oak Bluffs Water Department prior to construction.
 * Specific electric and utility line locations and specifications to be confirmed with NStar prior to construction.
 * See also plan entitled "Proposed Sewage Disposal System", "To Serve 5 One - Bedroom Housing Units", (Aidyberg II), applicant Island Elderly Housing Inc., December 11, 2002, for additional specifications for drainage system, septic system and grading.

Legal Description
 Beginning at a point at the northeasterly corner of said property, thence; South 14 degrees 36 minutes 21 seconds East, 65.33 feet, to a point, thence; South 13 degrees 07 minutes 43 seconds East, 169.53 feet, to a point, thence; North 89 degrees 19 minutes 02 seconds West, 78.30 feet, to a point, thence; North 88 degrees 16 minutes 40 seconds West, 80.13 feet, to a point, thence; North 13 degrees 32 minutes 22 seconds West, 212.24 feet, to a point, thence; North 77 degrees 15 minutes 47 seconds East, 48.15 feet, to a point, thence; South 14 degrees 36 minutes 21 seconds East, 20.00 feet to a point, thence; North 74 degrees 21 minutes 40 seconds East, 105.00 feet to the point of beginning. Said parcel containing 33,768 square feet (0.78 acres).

"AIDYLBURG II"
 Site Plan
 Oak Bluffs, Mass.
 Prepared For
**Island Elderly
 Housing, Inc.**

Scale: 1" = 20' September 20, 2005
 Schofield, Barbini & Hoehn Inc.
 State Road, Vineyard Haven, Mass.
 MV 799 - 1

SP-2
4