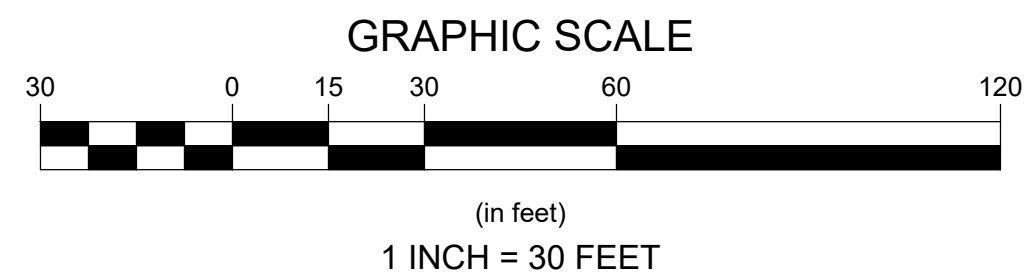


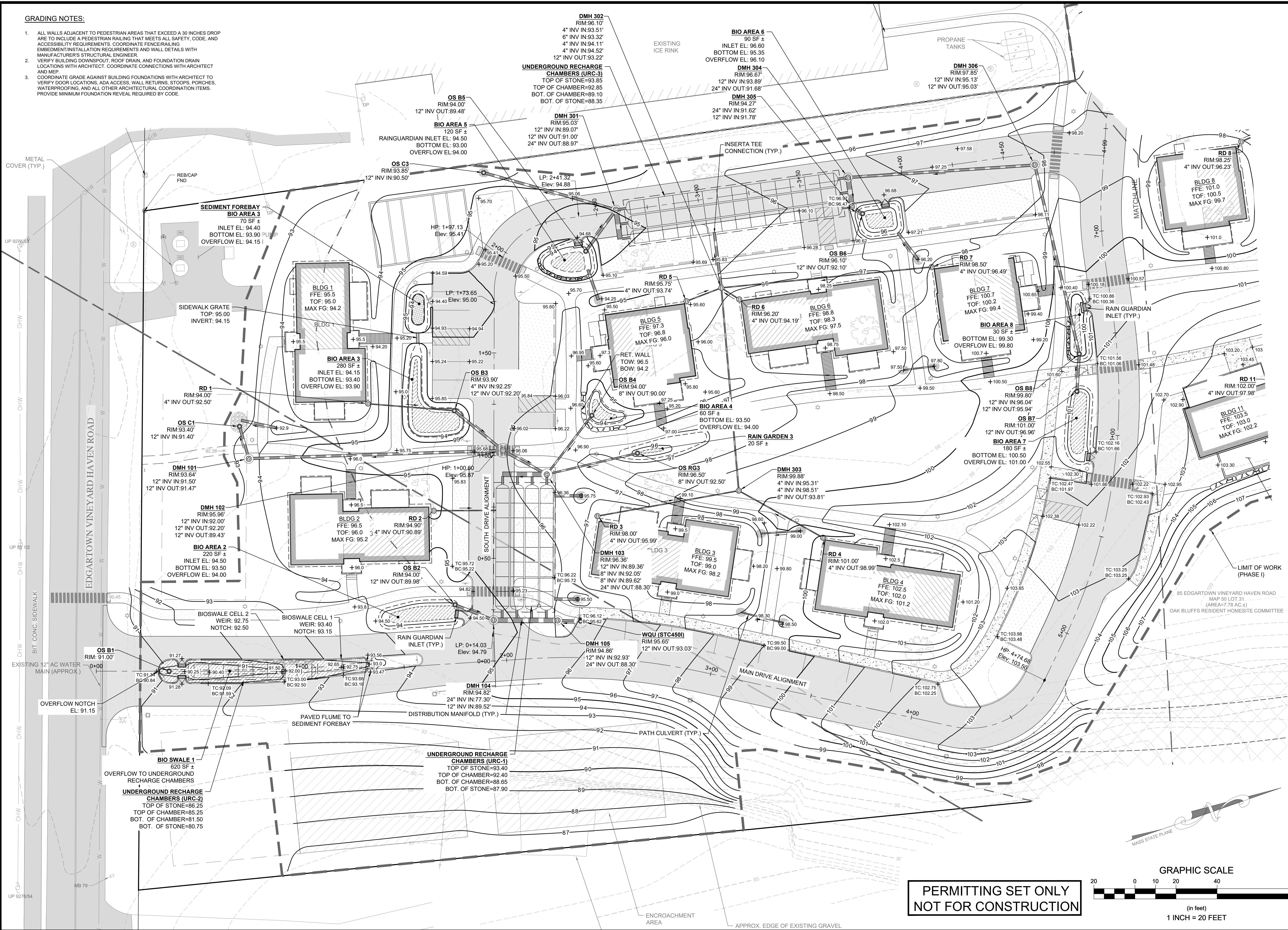
PERMITTING SET ONLY
NOT FOR CONSTRUCTION

[illegible]

last modified: 12/08/22 printed: 12/08/22 by eh K:\Projects\2022\2008 Oak Bluffs Southern Tier\Drawings\22008 GD.dwg

GRADING NOTES:

- ALL WALLS ADJACENT TO PEDESTRIAN AREAS THAT EXCEED A 30 INCHES DROP ARE TO INCLUDE A PEDESTRIAN RAILING THAT MEETS ALL SAFETY, CODE, AND ACCESSIBILITY REQUIREMENTS. COORDINATE FENCING/RAILING EMBEDMENT/INSTALLATION REQUIREMENTS AND WALL DETAILS WITH MANUFACTURER'S STRUCTURAL ENGINEER.
- VERIFY BUILDING DOWNSPOUT, ROOF DRAIN, AND FOUNDATION DRAIN LOCATIONS WITH ARCHITECT. COORDINATE CONNECTIONS WITH ARCHITECT AND MEP.
- COORDINATE GRADE AGAINST BUILDING FOUNDATIONS WITH ARCHITECT TO VERIFY DOOR LOCATIONS, ADA ACCESS, WALL RETURNS, STOOPS, PORCHES, WATERPROOFING, AND ALL OTHER ARCHITECTURAL COORDINATION ITEMS. PROVIDE MINIMUM FOUNDATION REVEAL REQUIRED BY CODE.



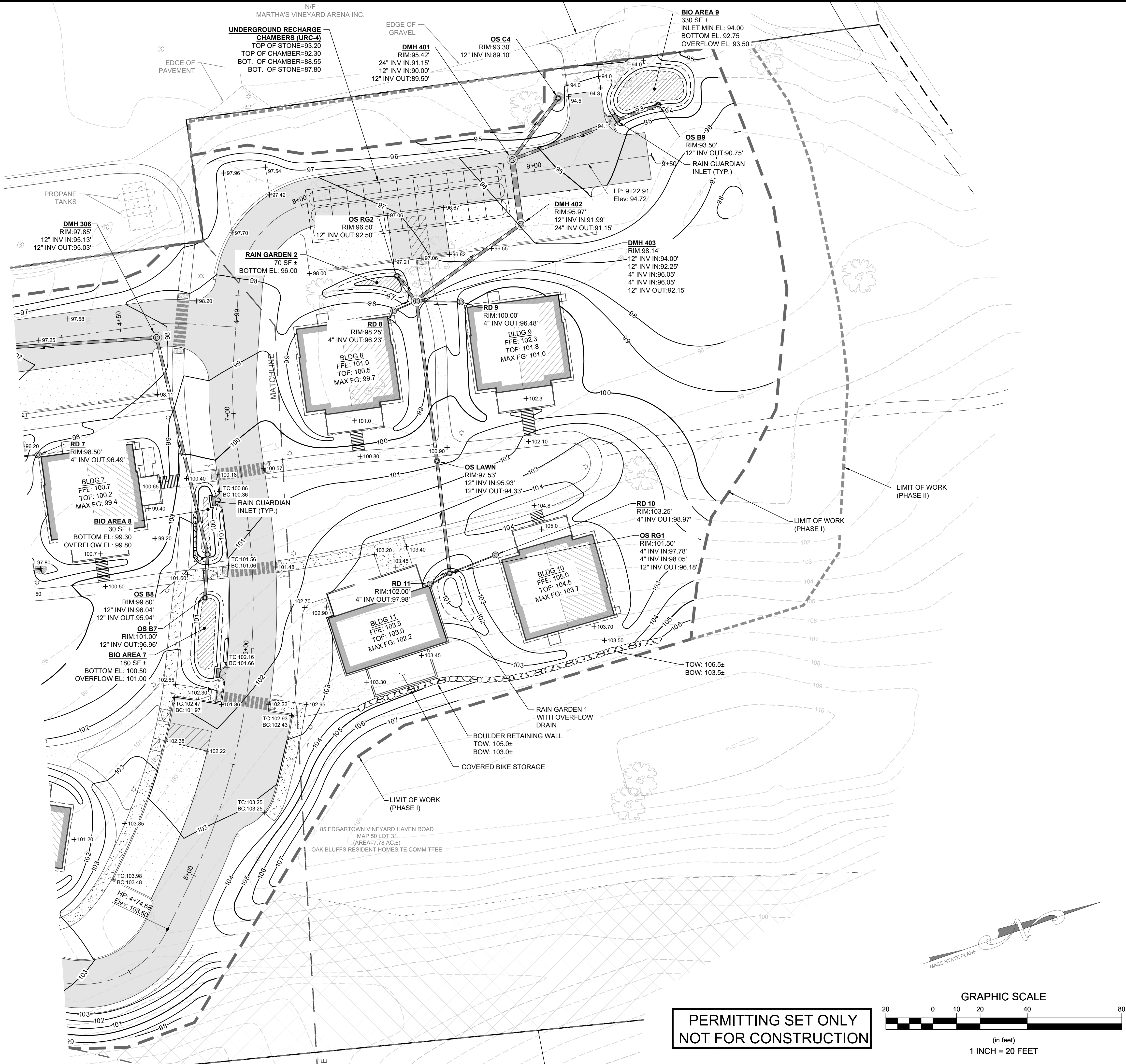
Revisions

Rev	Date	By	Appr	Description
1				
2				
3				
4				
5				
6				
7				
8				
9				
10				
11				
12				
13				
14				
15				
16				
17				
18				
19				
20				
21				
22				
23				
24				
25				
26				
27				
28				
29				
30				
31				
32				
33				
34				
35				
36				
37				
38				
39				
40				
41				
42				
43				
44				
45				
46				
47				
48				
49				
50				
51				
52				
53				
54				
55				
56				
57				
58				
59				
60				
61				
62				
63				
64				
65				
66				
67				
68				
69				
70				
71				
72				
73				
74				
75				
76				
77				
78				
79				
80				
81				
82				
83				
84				
85				
86				
87				
88				
89				
90				
91				
92				
93				
94				
95				
96				
97				
98				
99				
100				
101				
102				
103				
104				
105				
106				
107				
108				
109				
110				
111				
112				
113				
114				
115				
116				
117				
118				
119				
120				
121				
122				
123				
124				
125				
126				
127				
128				
129				
130				
131				
132				
133				
134				
135				
136				
137				
138				
139				
140				
141				
142				
143				
144				
145				
146				
147				
148				
149				
150				
151				
152				
153				
154				
155				
156				
157				
158				
159				
160				
161				
162				
163				
164				
165				
166				
167				
168				
169				
170				
171				
172				
173				
174				
175				
176				
177				
178				
179				
180				
181				
182				
183				
184				
185				
186				
187				
188				
189				
190				
191				
192				
193				
194				
195				
196				
197				
198				
199				
200				
201				
202				
203				
204				
205				
206				
207				
208				
209				
210				
211				
212				
213				
214				
215				
216				
217				
218				
219				
220				
221				
222				
223				
224				
225				
226				
227				
228				
229				
230				
231				
232				
233				
234				
235				
236				
237				
238				
239				
240				
241				
242				
243				
244				
245				
246				
247				
248				
249				
250				
251				
252				
253				
254				
255				
256				
257				
258				
259				
260				
261				
262				
263				
264				
265				
266				
267				
268				
269				
270				
271				
272				
273				
274				
275				
276				
277				
278				
279				
280				
281				
282				
283				
284				
285				
286				
287				
288				
289				
290				
291				
292				
293				
294				
295				
296				
297				
298				
299				
300				
301				
302				
303				
304				
305				
306				
307				
308				
309				
310				
311				
312				
313				
314				
315				
316				
317				
318				
319				
320				
321				
322				
323				
324				
325				
326				
327				
328				
329				
330				
331				
332				
333				
334				
335				
336				
337				
338				
339				
340				
341				
342				
343				
344				
345				
346				
347				
348				
349				
350				
351				
352				
353				
354				
355				
356				
357				
358				
359				
360				
361				
362				
363				
364				
365				
366				
367				
368				
369				
370				
371				
372				
373				
374				
375				
376				
377				
378				
379				
380				
381				
382				
383				
384				
385				
386				
387				
388				
389				
390				
391				
392				
393				
394				
395				
396				
397				
398				
399				
400				
401				
402				
403				
404				
405				
406				
407				
408				
409				
410				
411				
412				
413				
414				
415				
416				
417				
418				
419				
420				
421				</

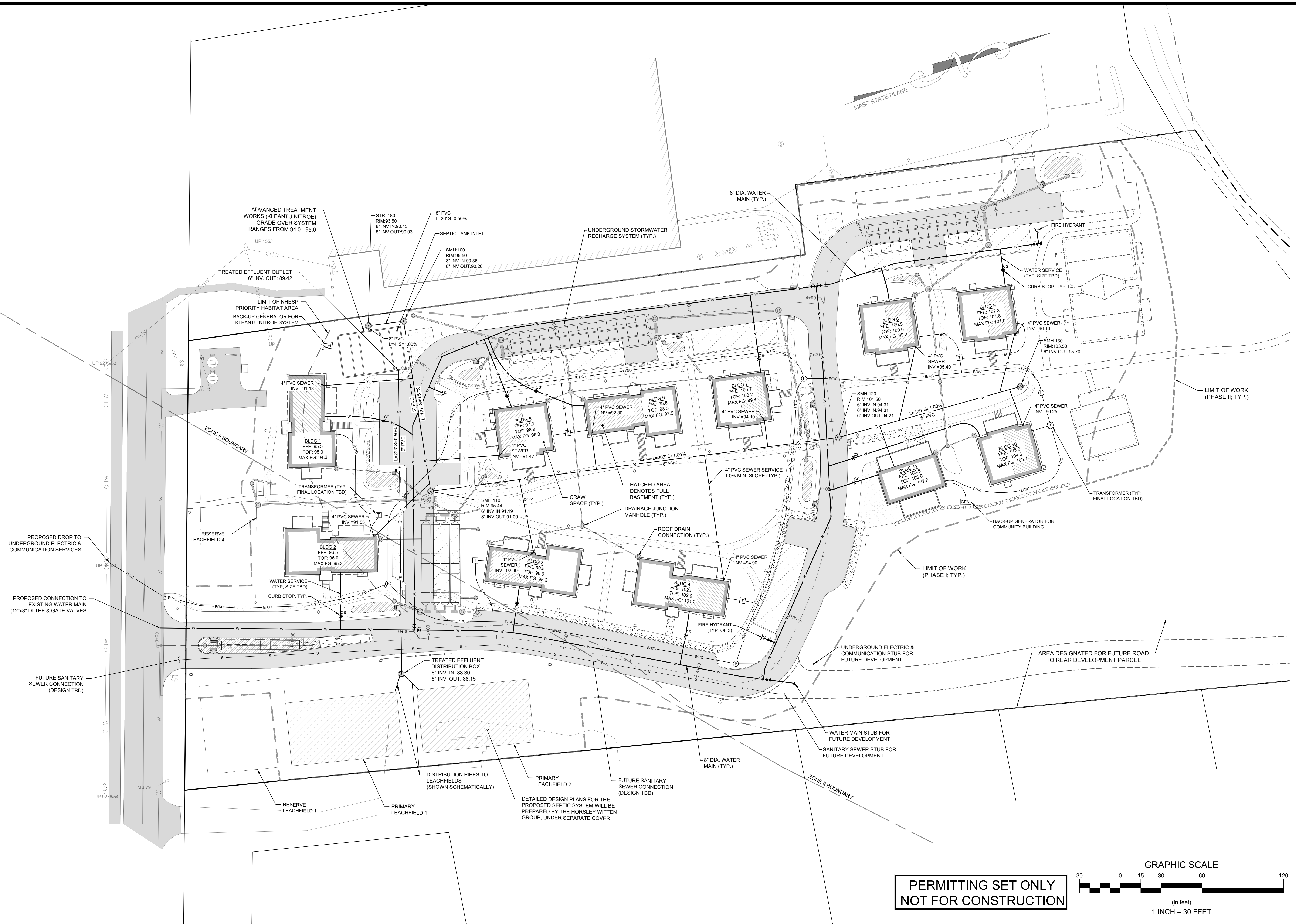
last modified: 12/08/22 printed: 12/08/22 by eh K:\Projects\2022\22008 Oak Bluffs Southern Tier\Drawings\22008 GD.dwg

GRADING NOTES:

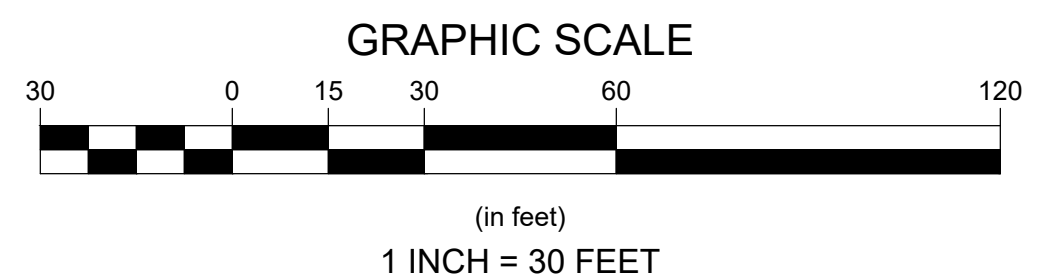
- ALL WALLS ADJACENT TO PEDESTRIAN AREAS THAT EXCEED A 30 INCHES DROP ARE TO INCLUDE A PEDESTRIAN RAILING THAT MEETS ALL SAFETY, CODE, AND ACCESSIBILITY REQUIREMENTS. COORDINATE FENCE/RAILING EMBEDMENT/INSTALLATION REQUIREMENTS AND WALL DETAILS WITH MANUFACTURER'S STRUCTURAL ENGINEER.
- VERIFY BUILDING DOWNSPOUT, ROOF DRAIN, AND FOUNDATION DRAIN LOCATIONS WITH ARCHITECT. COORDINATE CONNECTIONS WITH ARCHITECT AND MEP.
- COORDINATE GRADE AGAINST BUILDING FOUNDATIONS WITH ARCHITECT TO VERIFY DOOR LOCATIONS, ADA ACCESS, WALL RETURNS, STOOPS, PORCHES, WATERPROOFING, AND ALL OTHER ARCHITECTURAL COORDINATION ITEMS. PROVIDE MINIMUM FOUNDATION REVEAL REQUIRED BY CODE.




Revisions		Horsley Witten Group, Inc.		SOUTHERN TIER PERMIT PLANS		Affirmative Investments, Inc.		Horsley Witten Group, Inc.		Registration	
Rev	Date	By	Description	Checked By	Drawn By	Plan Title	Prepared For	Survey Provided By	Project Number	Sheet	Sheet Number
1	12-08-2022	EWV	Final	EWV	EWV	85 EDGARTOWN-VINEYARD HAVEN ROAD OAK BLUFFS, MASSACHUSETTS	33 Union St, 2nd Floor Boston, MA 02108 Phone: (508) 833-3150 Fax: (508) 833-3150	90 Route 6A Sandwich, MA 02563 Phone: (508) 833-3150 Fax: (508) 833-3150 Dated: February 10, 2022	22008	10 of 18	C - 10



PERMITTING SET ONLY
NOT FOR CONSTRUCTION



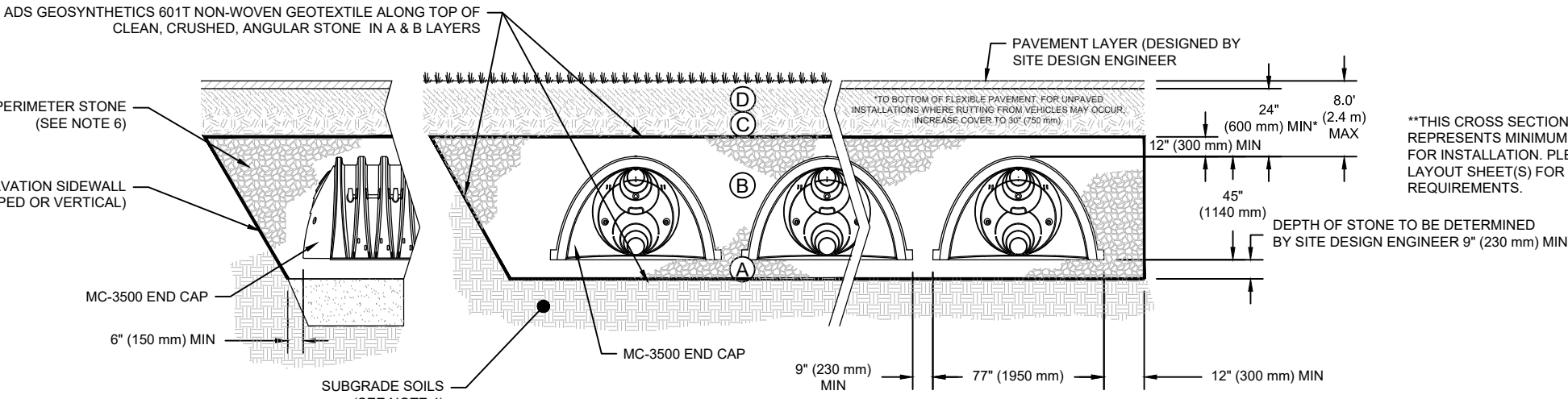
Affirmative Investments, Inc. 33 Union St., 2nd Floor Boston, MA 02108 Phone : --- Fax : ---		SOUTHERN TIER PERMIT PLANS 85 EDGARTOWN-VINEYARD HAVEN ROAD OAK BLUFFS, MASSACHUSETTS		UTILITY PLAN		Plan Title:	
Horsley Witten Group, Inc. 40 Routh Rd. Sandwich, MA 02563 Phone: (508) 833-6800 Fax: (508) 833-3150 Dated: February 10, 2022		Sustainable Environmental Solutions www.horsleywitten.com 90 Route 6A Sandwich, MA 02563 508-833-3150 office 508-833-3150 fax				Revisions	
Project Number: 22008		Sheet: 11 of 18		Date: DECEMBER 8, 2022		Designed By: NLE/WVA	
Project Number: C - 11				Drawn By: EWH		Checked By: RVC	
				Date		By	
				Date		By	
				Date		By	
				Date		By	
				Date		By	
				Date		By	
				Date		By	
				Date		By	
				Date		By	
				Date		By	
				Date		By	
				Date		By	
				Date		By	
				Date		By	
				Date		By	
				Date		By	
				Date		By	
				Date		By	
				Date		By	
				Date		By	
				Date		By	
				Date		By	
				Date		By	
				Date		By	
				Date		By	
				Date		By	
				Date		By	
				Date		By	
				Date		By	
				Date		By	
				Date		By	
				Date		By	
				Date		By	
				Date		By	
				Date		By	
				Date		By	
				Date		By	
				Date		By	
				Date		By	
				Date		By	
				Date		By	
				Date		By	
				Date		By	
				Date		By	
				Date		By	
				Date		By	
				Date		By	
				Date		By	
				Date		By	
				Date		By	
				Date		By	
				Date		By	
				Date		By	
				Date		By	
				Date		By	
				Date		By	
				Date		By	
				Date		By	
				Date		By	
				Date		By	
				Date		By	
				Date		By	
				Date		By	
				Date		By	
				Date		By	
				Date		By	
				Date		By	
				Date		By	
				Date		By	
				Date		By	
				Date		By	
				Date		By	
				Date		By	
				Date		By	
				Date		By	
				Date		By	
				Date		By	
				Date		By	
				Date		By	
				Date		By	
				Date		By	
				Date		By	
				Date		By	
				Date		By	
				Date		By	
				Date		By	
				Date		By	
				Date		By	
				Date		By	
				Date		By	
				Date		By	
				Date		By	
				Date		By	
				Date		By	
				Date		By	
				Date		By	
				Date		By	
				Date		By	
				Date		By	
				Date		By	
				Date		By	
				Date		By	
				Date		By	
				Date		By	
				Date		By	
				Date		By	
				Date		By	
				Date		By	
				Date		By	
				Date		By	
				Date		By	
				Date		By	
				Date		By	

[illegible]

ACCEPTABLE FILL MATERIALS: STORMTECH MC-3500 CHAMBER SYSTEMS

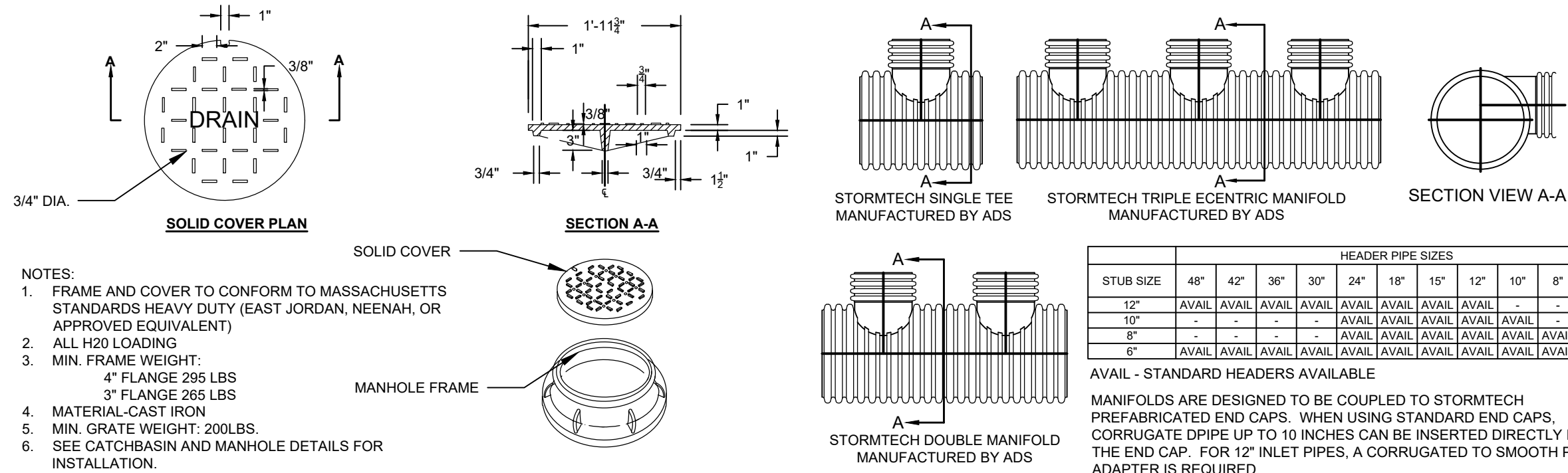
MATERIAL LOCATION	DESCRIPTION	AASHTO MATERIAL CLASSIFICATIONS	COMPACTION / DENSITY REQUIREMENT
D FINAL FILL: FILL MATERIAL FOR LAYER 'D' STARTS FROM THE TOP OF THE 'C' LAYER TO THE BOTTOM OF FLEXIBLE PAVEMENT OR UNPAVED FINISHED GRADE ABOVE. NOTE THAT PAVEMENT SUBBASE MAY BE PART OF THE 'D' LAYER	ANY SOIL/ROCK MATERIALS, NATIVE SOILS, OR PER ENGINEER'S PLANS. CHECK PLANS FOR PAVEMENT SUBGRADE REQUIREMENTS.	N/A	PREPARE PER SITE DESIGN ENGINEER'S PLANS. PAVED INSTALLATIONS MAY HAVE STRINGENT MATERIAL AND PREPARATION REQUIREMENTS.
C INITIAL FILL: FILL MATERIAL FOR LAYER 'C' STARTS FROM THE TOP OF THE EMBEDEDMENT STONE ('B' LAYER) TO 24" (600 mm) ABOVE THE TOP OF THE CHAMBER. NOTE THAT PAVEMENT SUBBASE MAY BE A PART OF THE 'C' LAYER.	GRANULAR WELL-GRADED SOIL/AGGREGATE MIXTURES, <35% FINES OR PROCESSED AGGREGATE. MOST PAVEMENT SUBBASE MATERIALS CAN BE USED IN LIEU OF THIS LAYER.	AASHTO M148 ¹ A-1, A-2.4, A-3 OR AASHTO M43 ¹ 3, 357, 4, 407, 5, 56, 57, 6, 67, 68, 7, 78, 8, 89, 9, 10	BEGIN COMPACTIONS AFTER 24" (600 mm) OF MATERIAL OVER THE CHAMBERS IS REACHED. COMPACT ADDITIONAL LAYERS IN 12" (300 mm) MAX. LIFTS TO A MIN. 95% PROCTOR DENSITY FOR WELL-GRADED MATERIAL, AND 95% RELATIVE DENSITY FOR PROCESSED AGGREGATE MATERIALS.
B EMBEDEDMENT STONE: FILL SURROUNDING THE CHAMBERS FROM THE FOUNDATION STONE ('A' LAYER) TO THE 'C' LAYER ABOVE.	CLEAN, CRUSHED, ANGULAR STONE	AASHTO M43 ¹ 3, 4	NO COMPACTION REQUIRED.
A FOUNDATION STONE: FILL BELOW CHAMBERS FROM THE SUBGRADE UP TO THE FOOT (BOTTOM) OF THE CHAMBER.	CLEAN, CRUSHED, ANGULAR STONE	AASHTO M43 ¹ 3, 4	PLATE COMPACT OR ROLL TO ACHIEVE A FLAT SURFACE. ^{1,2}

- PLEASE NOTE:
- THE LISTED AASHTO DESIGNATIONS ARE FOR GRADATIONS ONLY. THE STONE MUST ALSO BE CLEAN, CRUSHED, ANGULAR. FOR EXAMPLE, A SPECIFICATION FOR #4 STONE WOULD STATE: "CLEAN, CRUSHED, ANGULAR NO. 4 (AASHTO M43) STONE".
 - STORMTECH COMPACTION REQUIREMENTS ARE MET FOR 'A' LOCATION MATERIALS WHEN PLACED AND COMPACTED IN 9" (230 mm) (MAX) LIFTS USING TWO FULL COVERS WITH A VIBRATORY COMPACTOR.
 - WHERE INFILTRATION SURFACES MAY BE COMPROMISED BY COMPACTION, FOR STANDARD DESIGN LOAD CONDITIONS, A FLAT SURFACE MAY BE ACHIEVED BY RAKING OR DRAGGING WITHOUT COMPACTION EQUIPMENT. FOR SPECIAL LOAD DESIGNS, CONTACT STORMTECH FOR COMPACTION REQUIREMENTS.
 - ONCE LAYER 'C' IS PLACED, ANY SOLI/MATERIAL CAN BE PLACED IN LAYER 'D' UP TO THE FINISHED GRADE. MOST PAVEMENT SUBBASE SOILS CAN BE USED TO REPLACE THE MATERIAL REQUIREMENTS OF LAYER 'C' OR 'D' AT THE SITE DESIGN ENGINEER'S DISCRETION.



- NOTES:
- CHAMBERS SHALL MEET THE REQUIREMENTS OF ASTM F2418-10a, "STANDARD SPECIFICATION FOR POLYPROPYLENE (PP) CORRUGATED WALL STORMWATER COLLECTION CHAMBERS" CHAMBER CLASSIFICATION 45/75 DESIGNATION SS.
 - MC-3500 CHAMBERS SHALL BE DESIGNED IN ACCORDANCE WITH ASTM F2787 "STANDARD PRACTICE FOR STRUCTURAL DESIGN OF THERMOPLASTIC CORRUGATED WALL STORMWATER COLLECTION CHAMBERS".
 - THE SITE DESIGN ENGINEER IS RESPONSIBLE FOR ASSESSING THE BEARING RESISTANCE (ALLOWABLE BEARING CAPACITY) OF THE SUBGRADE SOILS AND THE DEPTH OF FOUNDATION STONE WITH CONSIDERATION FOR THE RANGE OF EXPECTED SOIL MOISTURE CONDITIONS.
 - PERIMETER STONE MUST BE EXTENDED HORIZONTALLY TO THE EXCAVATION WALL FOR BOTH VERTICAL AND SLOPED EXCAVATION WALLS.
 - REQUIREMENTS FOR HANDLING AND INSTALLATION:
 - TO MAINTAIN THE WIDTH OF CHAMBERS DURING SHIPPING AND HANDLING, CHAMBERS SHALL HAVE INTEGRAL, INTERLOCKING STACKING LUGS.
 - TO ENSURE A SECURE JOINT DURING INSTALLATION AND BACKFILL, THE HEIGHT OF THE CHAMBER JOINT SHALL NOT BE LESS THAN 3".
 - TO ENSURE THE INTEGRITY OF THE ARCH SHAPE DURING INSTALLATION, a) THE ARCH STIFFNESS CONSTANT AS DEFINED IN SECTION 6.2.8 OF ASTM F2418 SHALL BE GREATER THAN OR EQUAL TO 500 LBS/INCH. AND b) TO RESIST CHAMBER DEFORMATION DURING INSTALLATION AT ELEVATED TEMPERATURES (ABOVE 73° F / 23° C), CHAMBERS SHALL BE PRODUCED FROM REFLECTIVE GOLD OR YELLOW COLORS.

UNDERGROUND RECHARGE CHAMBERS (URC)
STORMTECH MC-3500 TYPICAL CROSS-SECTION
NOT TO SCALE



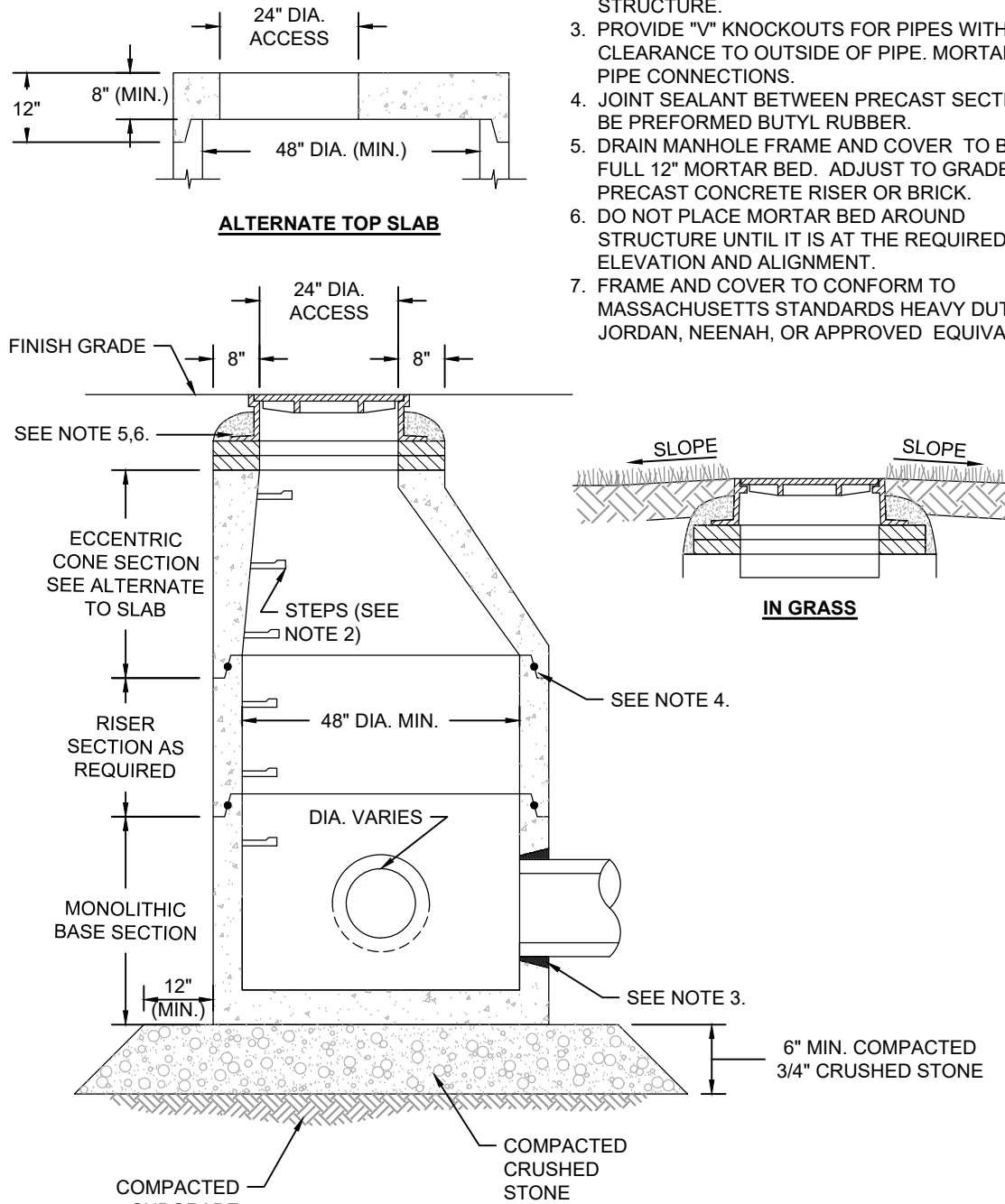
DRAINAGE STRUCTURE FRAME AND COVER
NOT TO SCALE

- NOTES:
- FRAME AND COVER TO CONFORM TO MASSACHUSETTS STANDARD HEAVY DUTY (EAST JORDAN, NEENAH, OR APPROVED EQUIVALENT)
 - ALL H2O LOADING
 - MIN. FRAME WEIGHT:
 - 4" FLANGE 295 LBS
 - 3" FLANGE 265 LBS
 - MATERIAL-CAST IRON
 - MIN. GRATE WEIGHT: 200 LBS
 - SEE CATCHBASIN AND MANHOLE DETAILS FOR INSTALLATION.

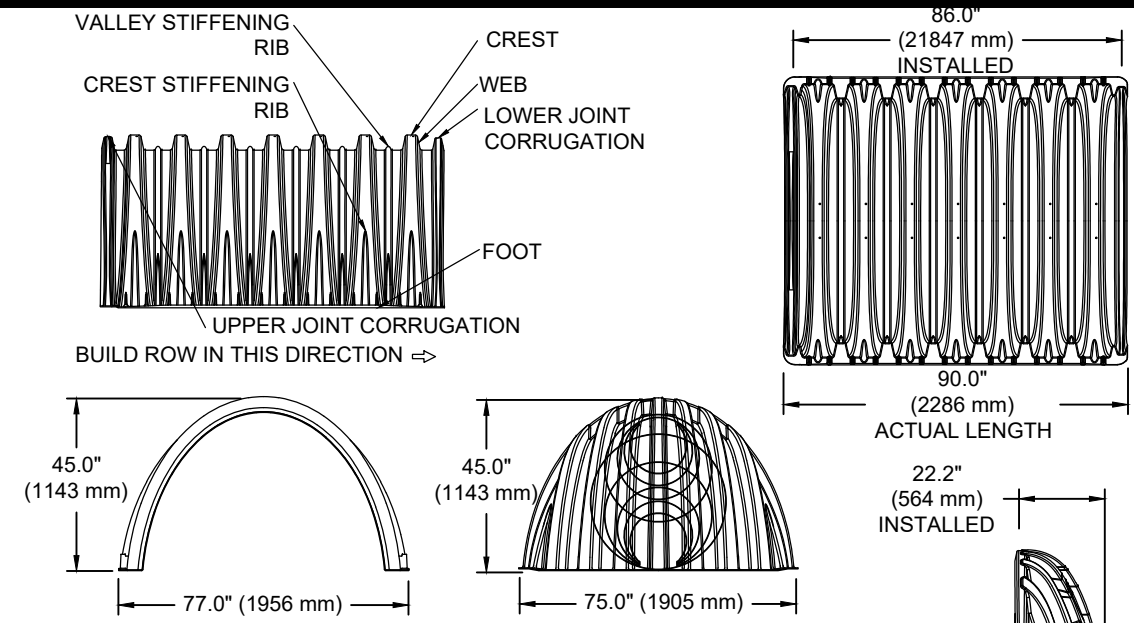
ADS MANIFOLD DETAIL
NOT TO SCALE

FOR INFORMATION
CALL 1-888-892-2694

- NOTES:
- ALL SECTIONS TO BE DESIGNED FOR H-20 LOADING.
 - COPOLYMER MANHOLE STEPS TO BE INSTALLED AT 12" O.C. FOR THE FULL DEPTH OF THE STRUCTURE.
 - PROVIDE "Y" KNOCKOUTS FOR PIPES WITH 2" MAX. CLEARANCE TO OUTSIDE OF PIPE. MORTAR ALL PIPE CONNECTIONS.
 - JOINT SEALANT BETWEEN PRECAST SECTIONS TO BE PREFORMED BUTYL RUBBER.
 - DRAIN MANHOLE FRAME AND COVER TO BE SET IN FULL 12" MORTAR BED. ADJUST TO GRADE WITH PRECAST CONCRETE RISER OR BRICK.
 - DO NOT PLACE MORTAR BED AROUND STRUCTURE UNTIL IT IS AT THE REQUIRED FINISH ELEVATION AND ALIGNMENT.
 - FRAME AND COVER TO CONFORM TO MASSACHUSETTS STANDARDS HEAVY DUTY (EAST JORDAN, NEENAH, OR APPROVED EQUIVALENT).



PRECAST DRAIN MANHOLE (DMH)
NOT TO SCALE



- NOMINAL CHAMBER SPECIFICATIONS
SIZE (W X H X INSTALLED LENGTH)
CHAMBER STORAGE
MINIMUM INSTALLED STORAGE*
WEIGHT
- 77.0" X 45.0" X 86.0"
109.9 CUBIC FEET
175.0 CUBIC FEET
134 lbs.
- (1956 mm X 1143 mm X 2184 mm)
(3.11 m³)
(4.96 m³)
(60.8 kg)
- NOMINAL END CAP SPECIFICATIONS
SIZE (W X H X INSTALLED LENGTH)
END CAP STORAGE
MINIMUM INSTALLED STORAGE*
WEIGHT
- 75.0" X 45.0" X 22.2"
14.9 CUBIC FEET
45.1 CUBIC FEET
49 lbs.
- (1905 mm X 1143 mm X 564 mm)
(0.42 m³)
(1.28 m³)
(22.2 kg)

- *ASSUMES 12" (305 mm) STONE ABOVE, 9" (229 mm) STONE FOUNDATION, 6" (152 mm) STONE BETWEEN CHAMBERS, 6" (152 mm) STONE PERIMETER IN FRONT OF END CAPS AND 40% STONE POROSITY. PARTIAL CUT HOLES AT BOTTOM OF END CAP FOR PART NUMBERS ENDING WITH "B" PARTIAL CUT HOLES AT TOP OF END CAP FOR PART NUMBERS ENDING WITH "T" END CAPS WITH A PREFABRICATED WELDED STUB END WITH "W" END CAPS WITH A WELDED CROWN FLATE END WITH "C"

PART #	STUB	B	C
MC3500EP08T	8" (150 mm)	33.21" (844 mm)	—
MC3500EP08B	8" (150 mm)	—	0.66" (17 mm)
MC3500EP08T	8" (200 mm)	31.16" (791 mm)	—
MC3500EP08B	8" (200 mm)	—	0.81" (21 mm)
MC3500EP10T	10" (250 mm)	29.04" (738 mm)	—
MC3500EP10B	10" (250 mm)	—	0.93" (24 mm)
MC3500EP12T	12" (300 mm)	26.36" (670 mm)	—
MC3500EP12B	12" (300 mm)	—	1.35" (34 mm)
MC3500EP15T	15" (375 mm)	23.39" (594 mm)	—
MC3500EP15B	15" (375 mm)	—	1.50" (38 mm)
MC3500EP18T	18" (450 mm)	20.03" (509 mm)	—
MC3500EP18B	18" (450 mm)	—	1.77" (45 mm)
MC3500EP24T	24" (600 mm)	14.48" (368 mm)	—
MC3500EP24B	24" (600 mm)	—	2.06" (52 mm)
MC3500EP24W	30" (750 mm)	—	2.75" (70 mm)
MC3500EP30B	30" (750 mm)	—	2.75" (70 mm)

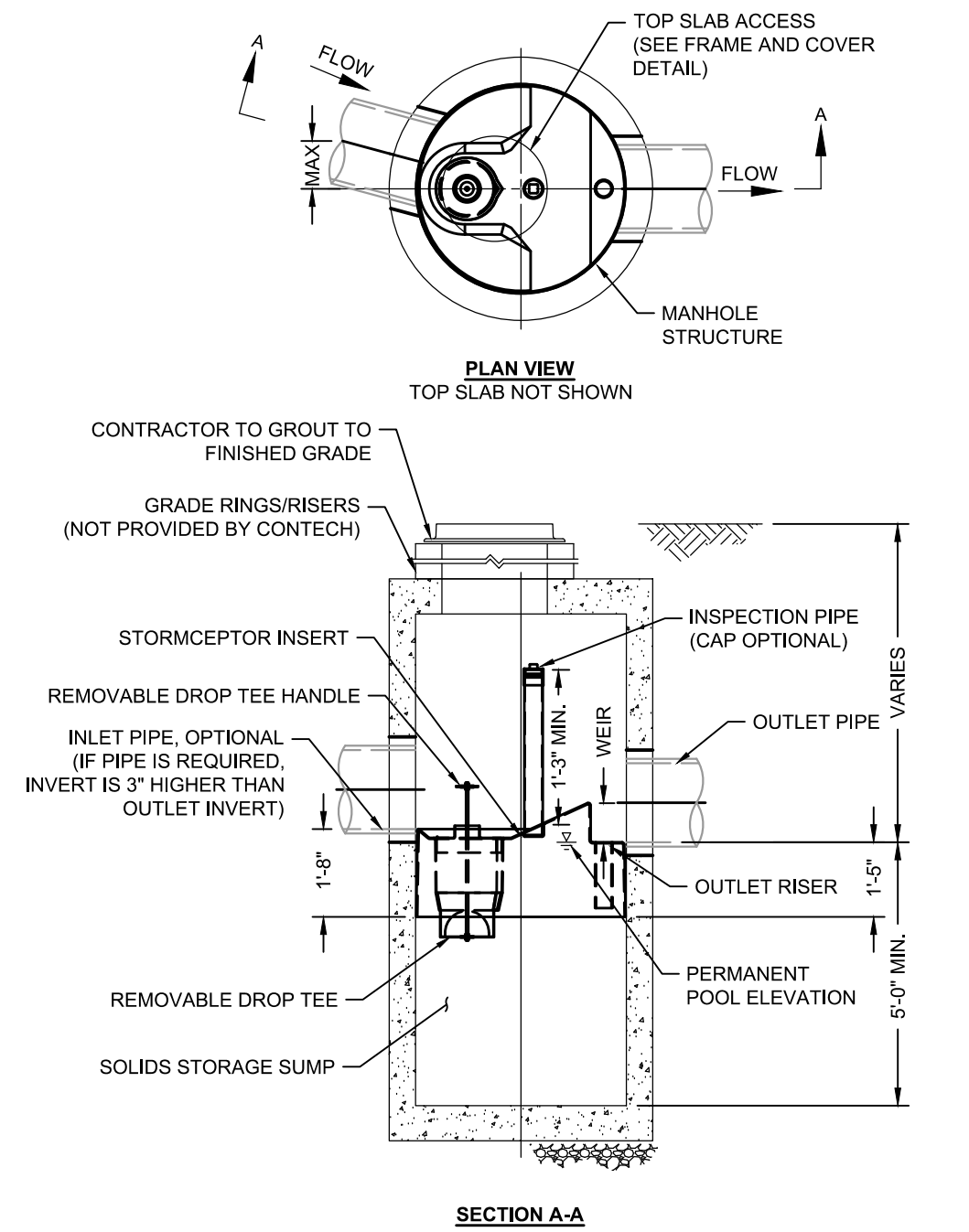
NOTE: ALL DIMENSIONS ARE NOMINAL

MC-3500 TECHNICAL DETAILS
NOT TO SCALE

UNDERGROUND RECHARGE CHAMBER SCHEDULE																
SPECIFICATIONS											ELEVATIONS					
RECHARGE AREA #	COVER TYPE	NUMBER OF UNITS	CHAMBER TYPE/ MODEL	CHAMBER HEIGHT (IN.)	STONE TOP OF CHAMBER (IN.)	BOTTOM OF CHAMBER TO INVERT IN (IN.)	STONE UNDER CHAMBER (IN.)	DIAMETER HEADER MANIFOLD (IN.)	DIAMETER CHAMBER INLET STUB (IN.)	# OF MANIFOLD INLETS STUBS	ELEV. A INVERT HEADER MANIFOLD (FT)	ELEV. B MANIFOLD STUB INVERT (FT)	ELEV. C BOTTOM OF CHAMBER S (FT)	ELEV. D BOTTOM OF STONE (FT)	ELEV. E TOP OF CHAMBER (FT)	ELEV. F TOP OF STONE (FT)
URC-1	PAVE/ GRASS	32	STORMTECH MC-3500	45.00	12	26.36	9	24	12	4 & 3	89.85	90.85	88.65	87.90	92.40	93.40
URC-2	BIO	8	STORMTECH MC-3500	45.00	12	26.36	9	12	12	1	83.70	83.70	81.50	80.75	85.25	86.25
URC-3	PAVE/ GRAVEL	42	STORMTECH MC-3500	45.00	12	26.36	9	24	12	3	90.30	91.30	89.10	88.35	92.85	93.85
URC-4	PAVE/ GRAVEL	33	STORMTECH MC-3500	45.00	12	26.36	9	24	12	3	89.75	90.75	88.55	87.80	92.30	93.30

STORMTECH GENERAL NOTES

- STORMTECH LLC ("STORMTECH") REQUIRES INSTALLING CONTRACTORS TO USE AND UNDERSTAND STORMTECH'S LATEST INSTALLATION INSTRUCTIONS PRIOR TO BEGINNING SYSTEM INSTALLATION.
- OUR TECHNICAL SERVICES DEPARTMENT OFFERS INSTALLATION CONSULTATIONS TO INSTALLING CONTRACTORS. CONTACT OUR TECHNICAL SERVICES REPRESENTATIVE AT LEAST 30 DAYS PRIOR TO SYSTEM INSTALLATION TO ARRANGE A PRE-INSTALLATION CONSULTATION. OUR REPRESENTATIVES CAN THEN ANSWER QUESTIONS OR ADDRESS COMMENTS ON THE STORMTECH CHAMBER SYSTEM AND INFORM THE INSTALLING CONTRACTOR OF THE MINIMUM INSTALLATION REQUIREMENTS BEFORE BEGINNING THE SYSTEM'S CONSTRUCTION. CALL 1-888-892-2694 TO SPEAK TO A TECHNICAL SERVICE REPRESENTATIVE OR VISIT WWW.STORMTECH.COM TO RECEIVE A COPY OF OUR INSTALLATION INSTRUCTIONS.
- STORMTECH'S REQUIREMENTS FOR SYSTEMS WITH PAVEMENT DESIGN (ASPHALT, CONCRETE PAVERS, ETC.): MINIMUM COVER IS 18 INCHES NOT INCLUDING PAVEMENT; MAXIMUM COVER IS 96 INCHES INCLUDING PAVEMENT. FOR INSTALLATIONS THAT DO NOT INCLUDE PAVEMENT, WHERE RUTTING FROM VEHICLES MAY OCCUR, MINIMUM REQUIRED COVER IS 24 INCHES, MAXIMUM COVER IS 96 INCHES.
- THE CONTRACTOR MUST REPORT ANY DISCREPANCIES WITH CHAMBER FOUNDATION MATERIALS BEARING CAPACITIES TO THE DESIGN ENGINEER.
- AASHTO M288 CLASS 2 NON-WOVEN GEOTEXTILE (FILTER FABRIC) MUST BE USED AS INDICATED IN THE PROJECT PLANS.
- STONE PLACEMENT BETWEEN CHAMBERS ROWS AND AROUND PERIMETER MUST FOLLOW INSTRUCTIONS AS INDICATED IN THE MOST CURRENT VERSION OF STORMTECH'S INSTALLATION INSTRUCTIONS.
- BACKFILLING OVER THE CHAMBERS MUST FOLLOW REQUIREMENTS AS INDICATED IN THE MOST CURRENT VERSION OF STORMTECH'S INSTALLATION INSTRUCTIONS.
- THE CONTRACTOR MUST REFER TO STORMTECH'S INSTALLATION INSTRUCTIONS FOR A TABLE OF ACCEPTABLE VEHICLE LOADS AT VARIOUS DEPTHS OF COVER. THIS INFORMATION IS ALSO AVAILABLE AT STORMTECH'S WEBSITE: WWW.STORMTECH.COM. THE CONTRACTOR IS RESPONSIBLE FOR PREVENTING VEHICLES THAT EXCEED STORMTECH'S REQUIREMENTS FROM TRAVELING ACROSS OR PARKING OVER THE STORMWATER SYSTEM. TEMPORARY FENCING, WARNING TAPE AND APPROPRIATELY LOCATED SIGNS ARE COMMONLY USED TO PREVENT UNAUTHORIZED VEHICLES FROM ENTERING SENSITIVE CONSTRUCTION AREAS.
- THE CONTRACTOR MUST APPLY EROSION AND SEDIMENT CONTROL MEASURES TO PROTECT THE STORMWATER SYSTEM DURING ALL PHASES OF SITE CONSTRUCTION PER LOCAL CODES AND DESIGN ENGINEER'S SPECIFICATIONS.
- STORMTECH PRODUCT WARRANTY IS LIMITED. SEE CURRENT PRODUCT WARRANTY FOR DETAILS. TO ACQUIRE A COPY CALL STORMTECH AT 1-888-892-2694 OR VISIT WWW.STORMTECH.COM.



STORMCEPTOR STC450i DETAIL
NOT TO SCALE

- GENERAL NOTES
- CONTECH TO PROVIDE ALL MATERIALS UNLESS NOTED OTHERWISE.
 - FOR SITE SPECIFIC DRAWINGS WITH DETAILED STRUCTURE DIMENSIONS AND WEIGHT, PLEASE CONTACT YOUR CONTECH ENGINEERED SOLUTIONS LLC REPRESENTATIVE. www.ContechES.com
 - STORMCEPTOR WATER QUALITY STRUCTURE SHALL BE IN ACCORDANCE WITH ALL DESIGN DATA AND INFORMATION CONTAINED IN THIS DRAWING. CONTRACTOR TO CONFIRM STRUCTURE MEETS REQUIREMENTS OF PROJECT.
 - STORMCEPTOR STRUCTURE SHALL MEET AASHTO HS20 LOAD RATING, ASSUMING EARTH COVER OF 0' - 2' (610), AND GROUNDWATER ELEVATION AT, OR BELOW, THE OUTLET PIPE INVERT ELEVATION. ENGINEER OF RECORD TO CONFIRM ACTUAL GROUNDWATER ELEVATION. CASTINGS SHALL MEET AASHTO M538 AND BE CAST WITH THE CONTECH LOGO.
 - STORMCEPTOR STRUCTURE SHALL BE PRECAST CONCRETE CONFORMING TO ASTM C478 AND AASHTO LOAD FACTOR DESIGN METHOD.
 - ALTERNATE UNITS ARE SHOWN IN MILLIMETERS (mm).
- INSTALLATION NOTES
- ANY SUB-BASE, BACKFILL DEPTH, AND/OR ANTI-FLOTATION PROVISIONS ARE SITE-SPECIFIC DESIGN CONSIDERATIONS AND SHALL BE SPECIFIED BY ENGINEER OF RECORD.
 - CONTRACTOR TO PROVIDE EQUIPMENT WITH SUFFICIENT LIFTING AND REACH CAPACITY TO LIFT AND SET THE STORMCEPTOR MANHOLE STRUCTURE.
 - CONTRACTOR TO INSTALL JOINT SEALANT BETWEEN ALL STRUCTURE SECTIONS AND ASSEMBLE STRUCTURE.
 - CONTRACTOR TO PROVIDE, INSTALL, AND GROUT INLET AND OUTLET PIPE(S). MATCH PIPE INVERTS WITH ELEVATIONS SHOWN. ALL PIPE CENTERLINES TO MATCH PIPE OPENING CENTERLINES.
 - CONTRACTOR TO TAKE APPROPRIATE MEASURES TO ASSURE UNIT IS WATER TIGHT, HOLDING WATER TO FLOWLINE INVERT MINIMUM. IT IS SUGGESTED THAT ALL JOINTS BELOW PIPE INVERTS ARE GROUTED.

PERMITTING SET ONLY
NOT FOR CONSTRUCTION

SOUTHERN TIER PERMIT PLANS
85 EDGARTOWN-VINEYARD HAVEN ROAD
OAK BLUFFS, MASSACHUSETTS

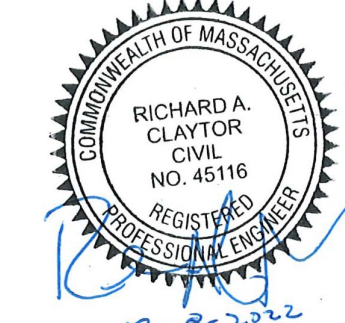
Prepared For:
Affirmative Investments, Inc.

33 Union St. 2nd Floor
Boston, MA 02108
Phone: (617) 333-3150
Fax: (617) 333-3150

Survey Provided By:
Horsley Witten Group, Inc.

33 Union St. 2nd Floor
Sandwich, MA 02563
Phone: (508) 833-4600
Fax: (508) 833-3150
Date: February 10, 2022

Registration:



Project Number: 22008
Sheet: 14 of 18

Sheet Number:
C - 14

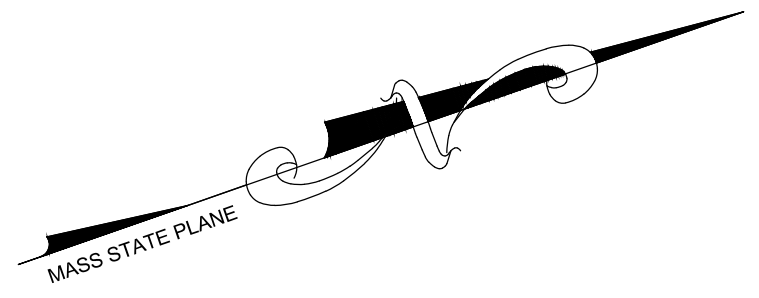
Revisions	Date	By	Description
1			
2			
3			
4			
5			
6			
7			
8			
9			
10			

Horsley Witten Group, Inc.
Sustainable Environmental Solutions
www.horsleywitten.com
90 Route 6A
Sandwich, MA 02563
508-833-6600 voice
508-833-3150 fax

Checked By: EVH
Drawn By: MUEVH
Designed By: MUEVH
Date: DECEMBER 8, 2022
PAC

last modified: 12/08/22 by kk K:\Projects\2022\2008 Oak Bluffs Southern Tier\Drawings\22008_LA.dwg printed: 12/08/22

Plant Schedule 1				
Key	Botanical Name	Common Name	Size	Spacing
CANOPY TREES				
AR	2 <i>Acer rubrum</i>	Red Maple	2.5" cal	As Shown
NS	4 <i>Nyssa sylvatica</i>	Tupelo	2.5" cal	As Shown
QA	5 <i>Quercus alba</i>	White Oak	2.5" cal	As Shown
QC	7 <i>Quercus coccinea</i>	Scarlet Oak	2.5" cal	As Shown
QI	4 <i>Quercus ilicifolia</i>	Bear Oak	1.5" cal	20' O.C.
QS	2 <i>Quercus stellata</i>	Post Oak	2.5" cal	As Shown
QV	6 <i>Quercus velutina</i>	Black Oak	2.5" cal.	As Shown
UNDERSTORY TREES				
AA	5 <i>Amelanchier arborea</i>	Serviceberry	1.5" cal	15' O.C.
SAS	2 <i>Sassafras albidum</i>	Sassafras	#2	20' O.C.
EVERGREEN TREE				
JV	3 <i>Juniperus virginiana</i>	Eastern Red Cedar	8" - 10' h.	As Shown
PR	12 <i>Pinus rigida</i>	Pitch Pine	7-8" B&B	As Shown



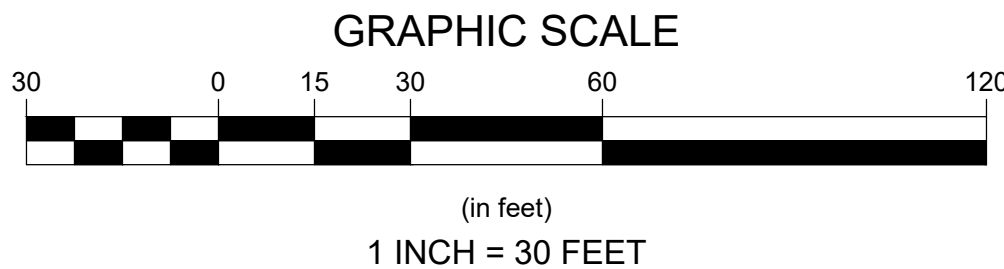
Suggested Plant List				
Key	Botanical Name	Common Name	Size	Spacing
CANOPY TREES				
AR	<i>Acer rubrum</i>	Red Maple	2.5" cal	As Shown
NS	<i>Nyssa sylvatica</i>	Tupelo	2.5" cal	As Shown
QA	<i>Quercus alba</i>	White Oak	2.5" cal	As Shown
QC	<i>Quercus coccinea</i>	Scarlet Oak	2.5" cal	As Shown
QI	<i>Quercus ilicifolia</i>	Bear Oak	1.5" cal	20' O.C.
QS	<i>Quercus stellata</i>	Post Oak	2.5" cal	As Shown
QV	<i>Quercus velutina</i>	Black Oak	2.5" cal.	As Shown
UNDERSTORY TREES				
AA	<i>Amelanchier arborea</i>	Serviceberry	1.5" cal	15' O.C.
SAS	<i>Sassafras albidum</i>	Sassafras	#2	20' O.C.
EVERGREEN TREE				
JV	<i>Juniperus virginiana</i>	Eastern Red Cedar	8" - 10' h.	As Shown
PR	<i>Pinus rigida</i>	Pitch Pine	7-8" B&B	As Shown
PS	<i>Pinus strobus</i>	Eastern White Pine	8-10' h	As Shown

LARGE SHRUBS				
HV	<i>Hamamelis virginiana</i>	Common Witchhazel	3/4" B&B	8' O.C.
IG	<i>Ilex glabra</i>	Inkberry	#5	5' O.C.
MC	<i>Morella carolinensis</i>	Bayberry	#5	6' O.C.
VC	<i>Vaccinium corymbosum</i>	Highbush Blueberry	3/4" B&B	6' O.C.
VD	<i>Viburnum dentatum</i>	Arrowwood Viburnum	#7	6' O.C.
SMALL SHRUBS (Foundation Planting)				
AM	<i>Aronia melanocarpa</i>	Black Chokeberry	#3	4' O.C.
AMM	<i>Aronia melanocarpa</i> 'Morton'	Morton Black Chokeberry	#3	4' O.C.
CPF	<i>Comptonia peregrina</i>	Sweet Fern	#2	4' O.C.
GB	<i>Gaylussacia bacata</i>	Black huckleberry	#2	4' O.C.
IG	<i>Ilex glabra</i>	Inkberry	#5	5' O.C.
IGS	<i>Ilex glabra</i> 'Shamrock'	Shamrock Inkberry	#5	4' O.C.
JH	<i>Juniperus horizontalis</i>	Creeping juniper	#3	3' O.C.
KA	<i>Kalmia angustifolia</i>	Sheep Laurel	#3	5' O.C.
RV	<i>Rosa virginiana</i>	Virginia Rose	#3	4' O.C.

MVC POLICY FOR SITE DESIGN AND LANDSCAPE:			
1 TREE / 8 PARKING SPACES:	REQUIRED	PROVIDED	WAIVER
TREE CALIPER	10	19	N/A
	2.5" - 4" MIN.	N/A	N/A

GRASS / PERENNIAL / GROUNDCOVER (Foundation Planting)			
AV	<i>Andropogon virginicus</i>	Broom Sedge	#1 18" O.C.
AUV	<i>Arctostaphylos uva-ursi</i>	Bearberry	4" av pot 12" O.C.
AS	<i>Asclepias purpurascens</i>	Purple Milkweed	Plugs 12" O.C.
ATW	<i>Asclepias tuberosa</i>	Butterfly Weed	Plugs 12" O.C.
CP	<i>Carex pensylvanica</i>	Pennsylvania Sedge	Plugs 12" O.C.
CR	<i>Chimaphila maculata</i>	Striped wintergreen	#2 30" O.C.
DP	<i>Dennstaedtia punctilobula</i>	Hay Scented Fern	#1 24" O.C.
ES	<i>Eragrostis spectabilis</i>	Purple Lovegrass	#1 18" O.C.
EDJ	<i>Eupatorium dubium</i> "Little Joe"	Little Joe Pye Weed	#1 18" O.C.
ED	<i>Eurybia divaricata</i>	White wood Aster	#1 18" O.C.
GP	<i>Gaultheria procumbens</i>	Tea Berry; Wintergreen	#1 12" O.C.
GM	<i>Geranium maculatum</i>	Wild Geranium	#1 18" O.C.
PV	<i>Panicum virgatum</i>	Switch Grass	#1 24" O.C.
PA	<i>Pteridium aquilinum</i>	Bracken Fern	#1 36" O.C.
PM	<i>Pycnanthemum muticum</i>	Short-toothed Mountain Mint	#1 18" O.C.
RH	<i>Rubus flagellaris</i>	Common dewberry	#1 18" O.C.
SS	<i>Schizachyrium scoparium</i>	Little Bluestem	Plugs 12" O.C.
SRF	<i>Solidago rugosa</i>	Wrinkle-leaved goldenrod	#1 24" O.C.
SJ	<i>Solidago juncea</i>	Early goldenrod	Plugs 12" O.C.
SNSB	<i>Sorghastrum nutans</i>	Indian Grass	#1 18" O.C.
BIORETENTION/RAINGARDEN PLANTING			
AS	<i>Asclepias purpurascens</i>	Purple Milkweed	Plugs 12" O.C.
BAM	<i>Baptisia tinctoria</i>	Wild indigo	#1 30" O.C.
CP	<i>Carex pensylvanica</i>	Pennsylvania Sedge	Plugs 12" O.C.
DM	<i>Deschampsia flexuosa</i>	Wavy hairgrass	Plugs 12" O.C.
EDJ	<i>Eupatorium dubium</i> "Little Joe"	Little Joe Pye Weed	#1 18" O.C.
GM	<i>Geranium maculatum</i>	Wild Geranium	#1 18" O.C.
PM	<i>Pycnanthemum muticum</i>	Short-toothed Mountain Mint	#1 18" O.C.
SS	<i>Schizachyrium scoparium</i>	Little Bluestem	#1 24" O.C.
SJ	<i>Solidago juncea</i>	Early goldenrod	Plugs 12" O.C.

- PLANTING LEGEND**
- PROPOSED CANOPY TREE
 - PROPOSED EVERGREEN TREE
 - PROPOSED UNDERSTORY TREE
 - PROPOSED LARGE DECIDUOUS SHRUB
 - PROPOSED SMALL SHRUB
 - BIORETENTION PLANTS MIX
 - GRASS/PERENNIAL/ GROUNDCOVER MIX
 - SEED MIX 1 - NO MOW
NEW ENGLAND NATIVE WARM SEASON GRASS MIX
 - SEED MIX 2 - MOW AS NEEDED
COLONIAL SEED - HARMONY MIX WITH CLOVER



PERMITTING SET ONLY
NOT FOR CONSTRUCTION

Revisions

Rev	Date	By	Appr	Description
1				
2				
3				
4				
5				
6				
7				
8				
9				
10				
11				
12				

Horsley Witten Group, Inc.
Sustainable Environmental Solutions
90 Route 6A
Sandwich, MA 02563
508-833-6600 voice
508-833-3150 fax

Created By: EEE

Drawn By: KJK

Designed By: KJK

Date: DECEMBER 8, 2022

SOUTHERN TIER PERMIT PLANS
85 EDGARTOWN-VINEYARD HAVEN ROAD
OAK BLUFFS, MASSACHUSETTS

Plan Set:

Prepared For:
Affirmative Investments, Inc.
33 Union St. 2nd Floor
Boston, MA 02108
Phone: ---
Fax: ---

Survey Provided By:
Horsley Witten Group, Inc.
90 Route 6A
Sandwich, MA 02563
Phone: (508) 833-6600
Fax: (508) 833-3150
Dated: February 10, 2022

Registration:

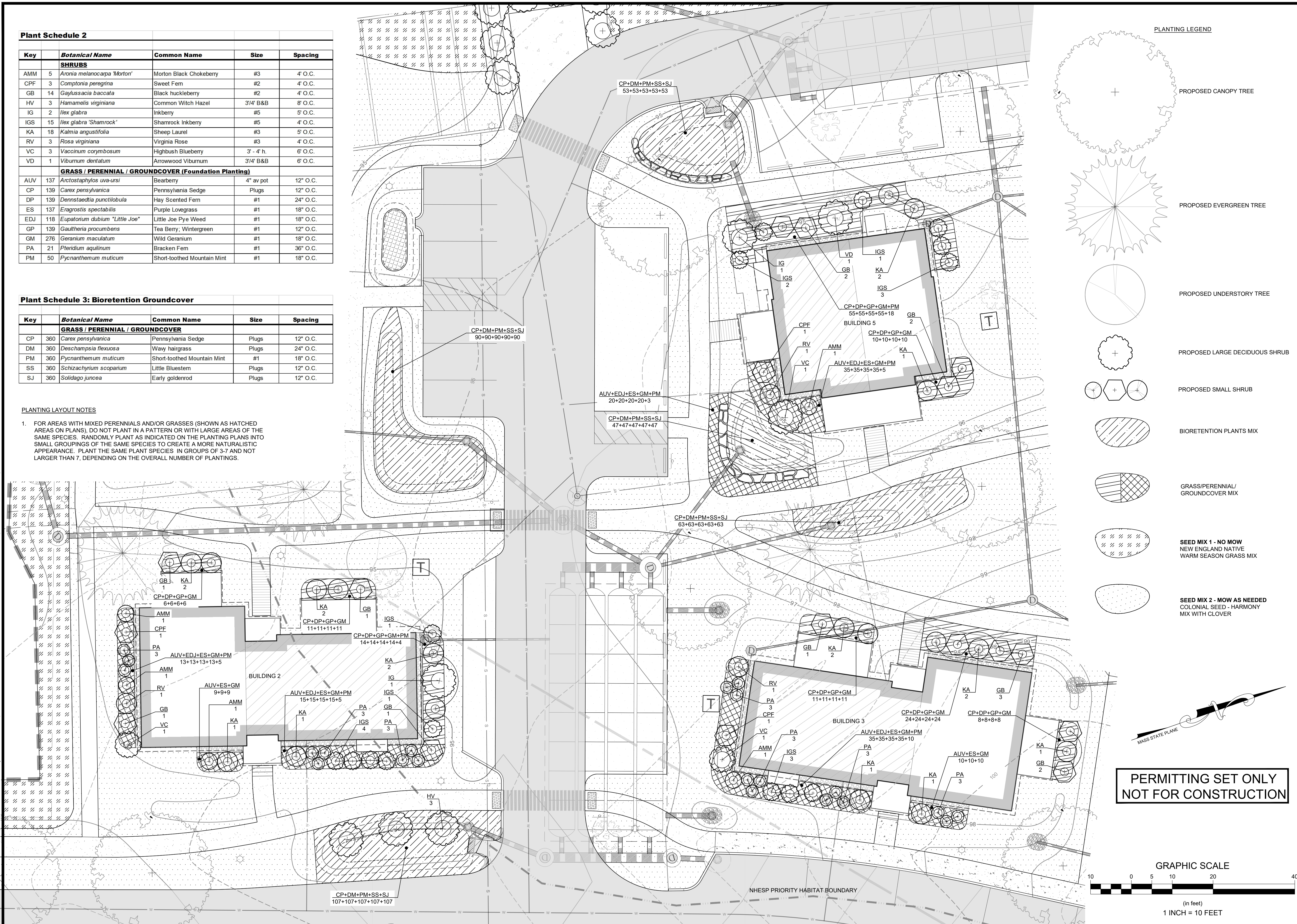
Project Number: 22008
Sheet: 16 of 18
Sheet Number: L - 1

Plant Schedule 2				
Key	Botanical Name	Common Name	Size	Spacing
	SHRUBS			
AMM	5 <i>Aronia melanocarpa</i> 'Morton'	Morton Black Chokeberry	#3	4' O.C.
CPF	3 <i>Comptonia peregrina</i>	Sweet Fern	#2	4' O.C.
GB	14 <i>Gaylussacia baccata</i>	Black huckleberry	#2	4' O.C.
HV	3 <i>Hamamelis virginiana</i>	Common Witch Hazel	3 1/4' B&B	8' O.C.
IG	2 <i>Ilex glabra</i>	Inkberry	#5	5' O.C.
IGS	15 <i>Ilex glabra</i> 'Shamrock'	Shamrock Inkberry	#5	4' O.C.
KA	18 <i>Kalmia angustifolia</i>	Sheep Laurel	#3	5' O.C.
RV	3 <i>Rosa virginiana</i>	Virginia Rose	#3	4' O.C.
VC	3 <i>Vaccinium corymbosum</i>	Highbush Blueberry	3' - 4' h.	6' O.C.
VD	1 <i>Viburnum dentatum</i>	Arrowwood Viburnum	3 1/4' B&B	6' O.C.
GRASS / PERENNIAL / GROUNDCOVER (Foundation Planting)				
AUV	137 <i>Arctostaphylos uva-ursi</i>	Bearberry	4" av pot	12" O.C.
CP	139 <i>Carex pensylvanica</i>	Pennsylvania Sedge	Plugs	12" O.C.
DD	139 <i>Dennstaedtia punctilobula</i>	Hay Scented Fern	#1	24" O.C.
ES	137 <i>Eragrostis spectabilis</i>	Purple Lovegrass	#1	18" O.C.
EDJ	118 <i>Eupatorium dubium</i> 'Little Joe'	Little Joe Pye Weed	#1	18" O.C.
GP	139 <i>Gaultheria procumbens</i>	Tea Berry; Wintergreen	#1	12" O.C.
GM	276 <i>Geranium maculatum</i>	Wild Geranium	#1	18" O.C.
PA	21 <i>Pteridium aquilinum</i>	Bracken Fern	#1	36" O.C.
PM	50 <i>Pycnanthemum muticum</i>	Short-toothed Mountain Mint	#1	18" O.C.

Plant Schedule 3: Bioretention Groundcover					
Key		Botanical Name	Common Name	Size	Spacing
		GRASS / PERENNIAL / GROUNDCOVER			
CP	360	Carex pensylvanica	Pennsylvania Sedge	Plugs	12" O.C.
DM	360	Deschampsia flexuosa	Wavy hairgrass	Plugs	24" O.C.
PM	360	Pycnanthemum muticum	Short-toothed Mountain Mint	#1	18" O.C.
SS	360	Schizachyrium scoparium	Little Bluestem	Plugs	12" O.C.
SJ	360	Solidago juncea	Early goldenrod	Plugs	12" O.C.

PLANTING LAYOUT NOTES

1. FOR AREAS WITH MIXED PERENNIALS AND/OR GRASSES (SHOWN AS HATCHED AREAS ON PLANS), DO NOT PLANT IN A PATTERN OR WITH LARGE AREAS OF THE SAME SPECIES. RANDOMLY PLANT AS INDICATED ON THE PLANTING PLANS INTO SMALL GROUPINGS OF THE SAME SPECIES TO CREATE A MORE NATURALISTIC APPEARANCE. PLANT THE SAME PLANT SPECIES IN GROUPS OF 3-7 AND NOT LARGER THAN 7, DEPENDING ON THE OVERALL NUMBER OF PLANTINGS.

[illegible]

GENERAL PLANTING NOTES:

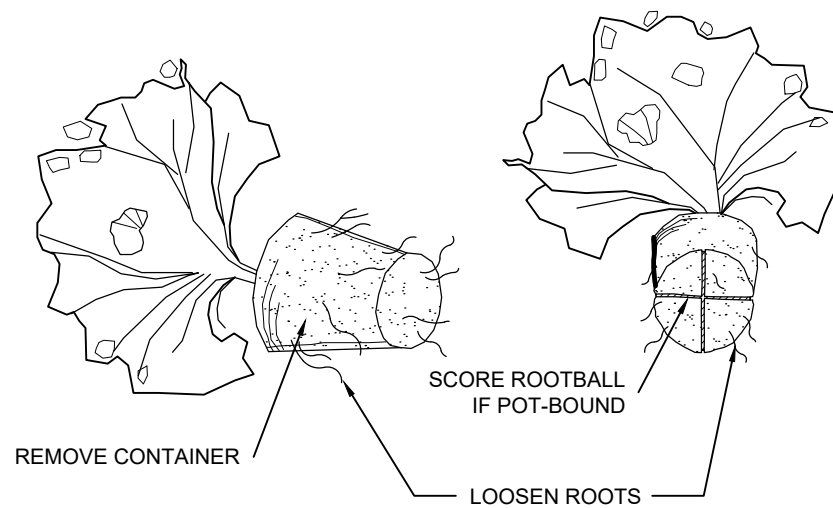
- THE FOLLOWING NOTES ARE PROVIDED AS GENERAL PLANTING GUIDELINES ONLY. THOROUGHLY REVIEW THE PROJECT SPECIFICATIONS FOR ALL LANDSCAPE REQUIREMENTS PRIOR TO THE COMMENCEMENT OF ANY LANDSCAPE WORK. SUBMIT IN WRITING TO THE LANDSCAPE ARCHITECT ANY QUESTIONS OR CLARIFICATIONS REQUIRED AT A MINIMUM OF 30 DAYS PRIOR TO ORDERING ANY MATERIALS OR BEGINNING ANY LANDSCAPE CONSTRUCTION.
2. SUBMIT TO THE LANDSCAPE ARCHITECT FOR REVIEW AND APPROVAL ALL REQUIRED LANDSCAPE SUBMITTALS AS DESCRIBED IN THE SPECIFICATIONS INCLUDING A PLANT LIST WITH PLANT SIZE AND QUANTITIES TO BE ORDERED PRIOR TO DELIVERY TO THE PROJECT SITE.
3. FURNISH AND INSTALL ALL PLANTS AS SHOWN ON THE DRAWINGS AND IN THE SIZE AND QUANTITIES AS SPECIFIED ON THE PLANTING SCHEDULE. PLANT SUBSTITUTION SELECTION MUST BE APPROVED BY BIOLOGIST OR LANDSCAPE ARCHITECT PRIOR TO INSTALLATION.
4. ALL PLANTS TO COMPLY WITH APPLICABLE REQUIREMENTS OF ANSI Z60.1 "AMERICAN STANDARD FOR NURSERY STOCK," LATEST EDITION, PUBLISHED BY THE AMERICAN NURSERY AND LANDSCAPE ASSOCIATION INC.
5. PLANTS TO BE GROWN UNDER CLIMATIC CONDITIONS SIMILAR TO THOSE IN THE LOCALITY OF THE PROJECT FOR AT LEAST TWO (2) YEARS. USE HEALTHY NURSERY GROWN PLANTS THAT HAVE A WELL DEVELOPED ROOT SYSTEM. PLANTS MUST BE FREE OF DISEASE, INSECTS, EGGS OR LARVAE.
6. INSTALL PLANTS WITHIN ONE (1) WEEK OF PURCHASE. IF PLANTS ARE TO BE STORED AT THE SITE PRIOR TO PLANTING, IT IS THE CONTRACTOR'S RESPONSIBILITY TO ENSURE THEY ARE PROPERLY MAINTAINED, WATERED, AND REMAIN HEALTHY.
7. PROCEED WITH PLANTING ONLY WHEN EXISTING AND FORECASTED WEATHER CONDITIONS PERMIT. SUBMIT TO THE LANDSCAPE ARCHITECT IN WRITING THE PROPOSED PLANTING SCHEDULE. OBTAIN APPROVAL OF PLANTING SCHEDULE FROM THE LANDSCAPE ARCHITECT PRIOR TO PERFORMING ANY WORK.
8. SEASONS FOR PLANTING:
- | | | |
|---------|---------------|-----------------------------|
| SPRING: | DECIDUOUS: | APRIL 1 TO JUNE 15 |
| | EVERGREEN: | APRIL 1 TO JUNE 15 |
| | PERENNIALS: | APRIL 15 TO JUNE 1 |
| | GROUNDCOVERS: | APRIL 15 TO JUNE 1 |
| FALL: | DECIDUOUS: | SEPTEMBER 15 TO NOVEMBER 15 |
| | EVERGREEN: | SEPTEMBER 15 TO NOVEMBER 15 |
| | PERENNIALS: | SEPTEMBER 15 TO NOVEMBER 15 |
| | GROUNDCOVERS: | SEPTEMBER 15 TO NOVEMBER 15 |
9. PLANTING UNDER FROZEN CONDITIONS WILL NOT BE PERMITTED. PLANTING BEFORE OR AFTER THE ABOVE REFERENCED PLANTING DATES WILL INCREASE THE LIKELIHOOD OF PLANT ESTABLISHMENT FAILURE. ANY DEVIATION FROM THE ABOVE REFERENCED PLANTING DATES IS UNDERTAKEN AT SOLE RISK OF THE CONTRACTOR AND IT IS THE RESPONSIBILITY OF THE CONTRACTOR TO PROVIDE ANY ADDITIONAL MAINTENANCE AND WATERING WHICH MAY BE REQUIRED TO ENSURE SATISFACTORY PLANT ESTABLISHMENT.
10. FURNISH ONE YEAR MANUFACTURER WARRANTY AND MAINTENANCE FOR TREES, PLANTS, AND GROUND COVER AGAINST DEFECTS INCLUDING DEATH AND UNSATISFACTORY GROWTH. EXCEPTIONS ARE DEFECTS RESULTING FROM ABNORMAL WEATHER CONDITIONS UNUSUAL FOR WARRANTY PERIOD. THE DATE OF FINAL ACCEPTANCE OF ALL COMPLETED PLANTING WORK ESTABLISHES THE END OF INSTALLATION PERIOD AND THE COMMENCEMENT OF THE WARRANTY AND MAINTENANCE PERIOD.
11. ALL TREES WITHIN 5'-0" OF WALKWAYS AND SIDEWALKS TO HAVE A 6'-8" STANDARD BRANCHING HEIGHT.
12. INSPECT ALL AREAS TO BE PLANTED OR SEEDED PRIOR TO STARTING ANY LANDSCAPE WORK. REPORT ANY DEFECTS SUCH AS INCORRECT GRADING, INCORRECT SUBGRADE ELEVATIONS OR DRAINAGE PROBLEMS, ETC. TO THE LANDSCAPE ARCHITECT AND ENGINEER PRIOR TO BEGINNING WORK. COMMENCEMENT OF WORK INDICATES ACCEPTANCE OF SUBGRADE AREAS TO BE PLANTED, AND THE LANDSCAPE CONTRACTOR ASSUMES RESPONSIBILITY FOR ALL LANDSCAPE WORK.
13. PROVIDE PROPER PREPARATION OF ALL PROPOSED PLANTED AND SEEDED AREAS PER THE NOTES AND SPECIFICATIONS.
14. ALL PLANT LAYOUT AND ACTUAL PLANTING LOCATIONS ARE TO BE FIELD VERIFIED BY LANDSCAPE ARCHITECT PRIOR TO PLANTING. NOTIFY THE LANDSCAPE ARCHITECT AT A MINIMUM OF 48 HOURS IN ADVANCE PRIOR TO SCHEDULING ANY FIELD INSPECTIONS.
15. BALL AND BURLAP: REMOVE BURLAP AND WIRE BASKETS FROM TOPS OF BALLS AND FROM TOP HALF OF ROOTBALL AS INDICATED ON DRAWINGS. REMOVE PALLETIS, IF ANY, BEFORE SETTING.
16. POTTED PLANTS: REMOVE THE PLANT FROM THE POT AND LOOSEN OR SCORE THE ROOTS BEFORE PLANTING TO PROMOTE OUTWARDS ROOT GROWTH INTO THE SOIL.
17. PLUGS: PLANT UPRIGHT AND NOT AT AN ANGLE. DIG PLANTING HOLES LARGE ENOUGH AND DEEP ENOUGH TO ACCOMMODATE THE ENTIRE ROOT MASS. PLANT PLUGS WITH NO TWISTED OR BALLED ROOTS AND WITH NO ROOTS EXPOSED ABOVE THE GRADE LINE. HAND PACK THE SOIL AROUND THE ENTIRE PLUG ROOT MASS.
18. DIG THE PLANTING HOLE TO THE SAME DEPTH AS THE ROOT BALL AND TWO TO THREE TIMES WIDER. SCORE ALL SIDES OF THE HOLE. PLACE THE PLANT IN THE HOLE SO THE TOP OF ROOT BALL IS EVEN WITH SOIL SURFACE. FILL THE HOLE HALFWAY AND THEN ADD WATER ALLOWING IT TO SEEP INTO BACK FILLED MATERIAL. BE SURE TO REMOVE ALL AIR POCKETS FROM BACK FILLED SOIL. DO NOT SPREAD SOIL ON TOP OF THE ROOTBALL. IF SOIL IS EXTREMELY POOR, REPLACE BACK FILL WITH GOOD QUALITY TOP SOIL. AMEND THE SOIL, AS NECESSARY.
19. CREATE A 2" TO 4" BERM AROUND THE EDGE OF PLANTING HOLE WITH REMAINING SOIL TO RETAIN WATER.
20. REMOVE ALL PLANT TAGS AND FLAGS FROM THE PLANTS.
21. MULCH ALL PLANTING BEDS AS INDICATED ON DRAWINGS. UNLESS NOTED OTHERWISE, ALL PLANTS TO RECEIVE 2-3 INCHES OF MULCH. DO NOT PILE OR MOUND MULCH AROUND THE PLANT STEMS OR TRUNK. DO NOT MULCH BIORETENTION AREAS.
22. TRIM BROKEN AND DEAD BRANCHES FROM TREES AND SHRUBS AFTER PLANTING. NEVER CUT A LEADER.
23. THE SITE IS LOCATED WITHIN THE TOWN'S AQUIFER PROTECTION, THEREFORE, DO NOT USE NITROGEN CONTAINING FERTILIZERS, PESTICIDES OR CHEMICALS DURING PLANTING AND MAINTENANCE OF THE LANDSCAPING OR LAWN AREAS. ADDITIONALLY, DO NOT USE PESTICIDES OR HERBICIDES CONTAINING INORGANIC COMPOUNDS (IOC) AS LISTED IN THE MASSACHUSETTS DRINKING WATER REGULATION (310 CMR 22.06), OR SYNTHETIC ORGANIC COMPOUNDS (SOC) OR VOLATILE ORGANIC COMPOUNDS (VOC) AS LISTED IN THE MASSACHUSETTS DRINKING WATER REGULATION (310 CMR 22.07).

GENERAL SEEDING NOTES:

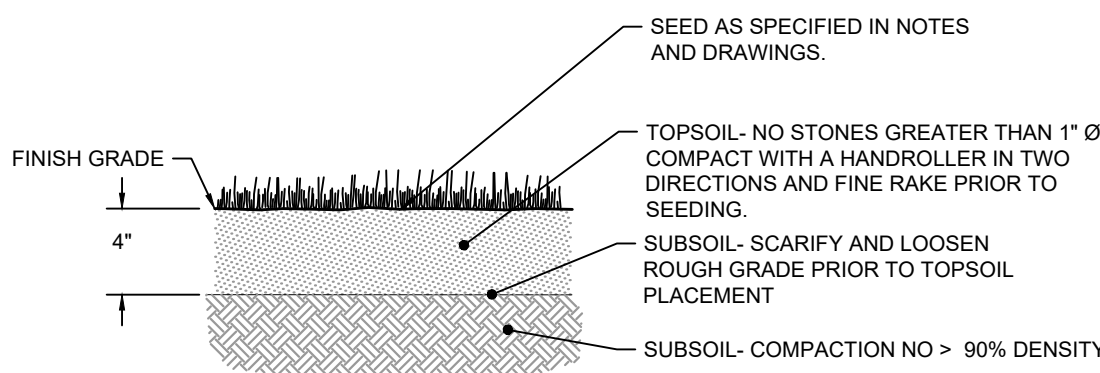
1. SEND A REPRESENTATIVE SAMPLE OF THE TOPSOIL TO A TESTING LABORATORY FOR STANDARD SOIL ANALYSIS AS DESCRIBED IN THE SPECIFICATIONS. SUBMIT TO THE LANDSCAPE ARCHITECT AND ENGINEER TEST RESULTS WITH RECOMMENDED SOIL TREATMENTS TO PROMOTE PLANT AND GRASS GROWTH. CORRECT DEFICIENCIES IN THE LOAM AND STOCKPILED TOPSOIL AS DIRECTED BY THE TESTING AGENCY FOR APPROPRIATE AREAS BASED ON SPECIFIC PLANT MATERIAL.
2. ALL AREAS THAT ARE DISTURBED AND/OR GRADED DURING CONSTRUCTION ARE TO BE BROUGHT TO FINISHED GRADE WITH AT LEAST A 4" MINIMUM DEPTH OF GOOD QUALITY LOAM AND SEEDED WITH A QUICK GERMINATING GRASS SEED SUCH AS NEW ENGLAND EROSION CONTROL RESTORATION MIX OR AS SPECIFIED ON THE PLANS.
3. PRIOR TO THE PLACEMENT OF TOP SOIL, LOOSEN THE SUBGRADE OF ALL PROPOSED SEEDED AREAS TO A DEPTH OF 6" AND RAKE TO REMOVE STONES LARGER THAN 1 INCH, STICKS, ROOTS, RUBBISH AND OTHER EXTRANEOUS MATTER AND LEGALLY DISPOSE TO AN OFF SITE LOCATION.
4. DO NOT SPREAD TOPSOIL IF THE SUBGRADE IS FROZEN, EXCESSIVELY WET, COMPACTED OR NOT PROPERLY PREPARED PER THE NOTES AND SPECIFICATIONS.
5. SEE SPECIFICATIONS FOR SEASONAL REQUIREMENTS FOR SEEDING.

WATERING NOTES

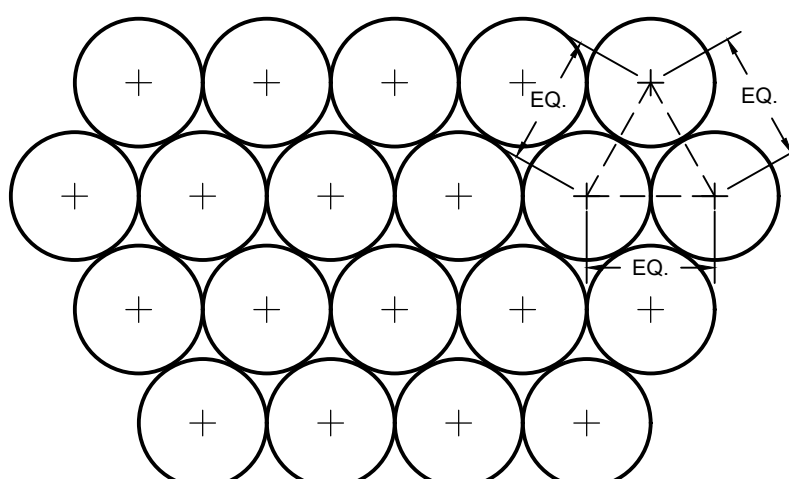
1. PROVIDE PROPER PLANT CARE, MAINTENANCE AND WATERING ON SITE UNTIL SUCH TIME AS THE LANDSCAPING IS ACCEPTED BY THE PROPERTY OWNER AS SATISFACTORY PER THE SPECIFICATIONS OR AS DETERMINED BY ANY WRITTEN AGREEMENTS BETWEEN THE CONTRACTOR AND PROPERTY OWNER.
2. ESTABLISH AN APPROPRIATE WATERING SCHEDULE FOR ALL PLANT MATERIAL BASED UPON PLANT SPECIES REQUIREMENTS AND SITE CONDITIONS. PROVIDE SCHEDULE IN WRITING TO THE LANDSCAPE ARCHITECT AND OWNER FOR REVIEW AND APPROVAL. ADHERE TO THE APPROVED SCHEDULE UNTIL PLANTS ARE FULLY ESTABLISHED.
3. AT A MINIMUM THE NEWLY SEEDED AND/OR HYDROSEEDED LAWNS SHOULD BE WATERED AS RECOMMENDED BY THE SUPPLIER FOR ESTABLISHMENT. SPECIAL CARE SHOULD BE TAKEN TO ENSURE THAT THE LAWN IS NOT SATURATED DURING WATERING. IF AN IRRIGATION SYSTEM IS NOT PROVIDED, A TEMPORARY IRRIGATION SYSTEM OR HANDHELD GARDEN HOSE SHALL BE USED FOR WATERING SEEDED AREAS. THE AREA MUST BE MAINTAINED CONSISTENTLY MOIST FOR THE BEST GERMINATION RESULTS. ADDITIONAL WATERING MAY BE REQUIRED IF PLANTING AND SEEDING OCCUR OUTSIDE OF THE RECOMMENDED PLANTING SEASONS.



CONTAINER PLANT ROOTBALL TREATMENT

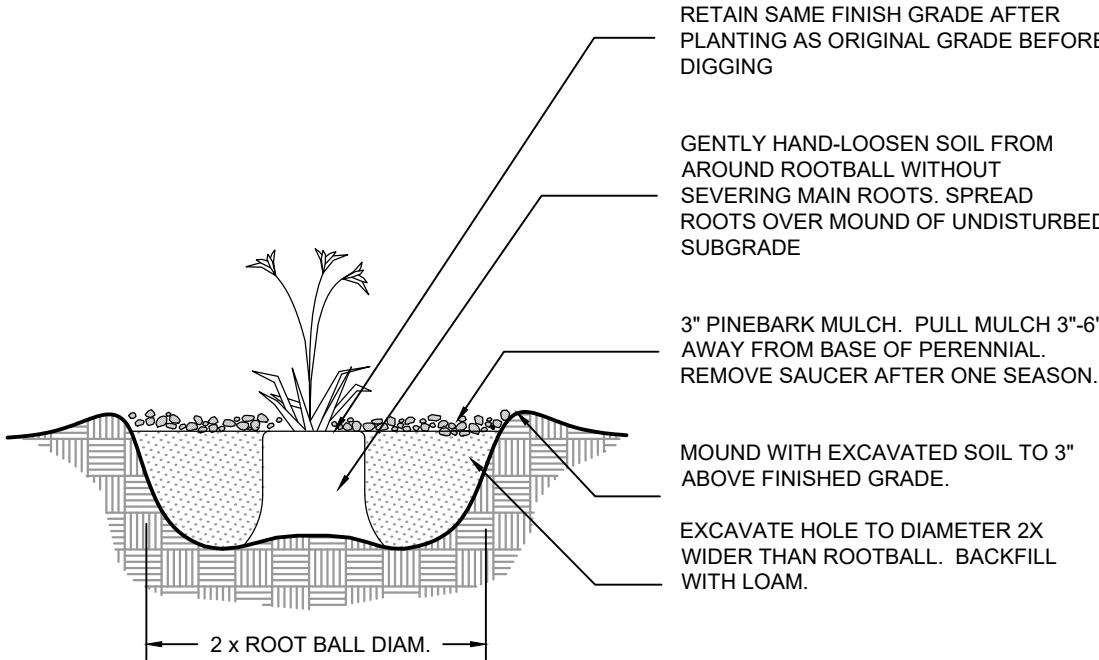


LOAM AND SEED
NOT TO SCALE

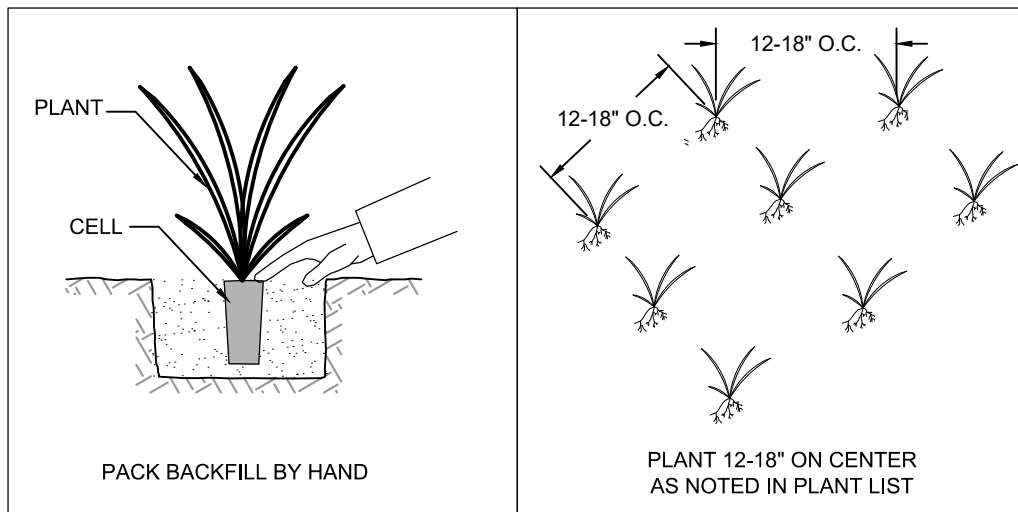


USE EQUIDISTANT TRIANGULAR SPACING FOR PLANTS - FOR ACTUAL SPACING
SEE PLANS OR PLANTING SCHEDULE

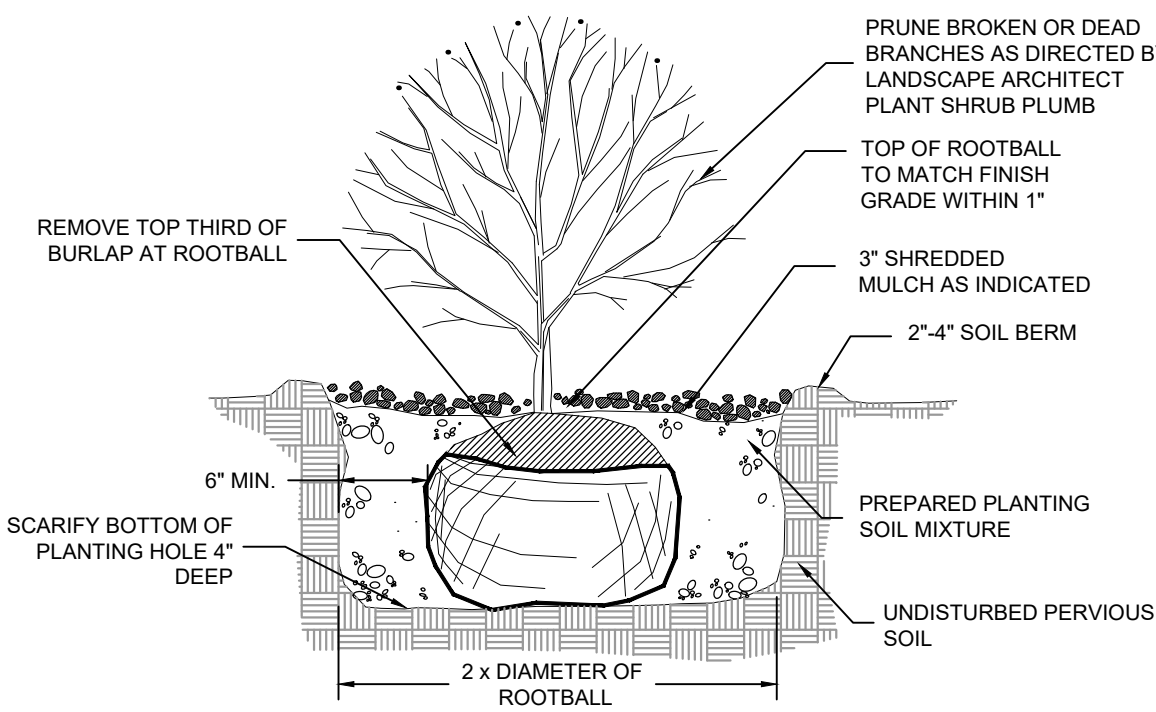
PLANTING SPACING
NOT TO SCALE



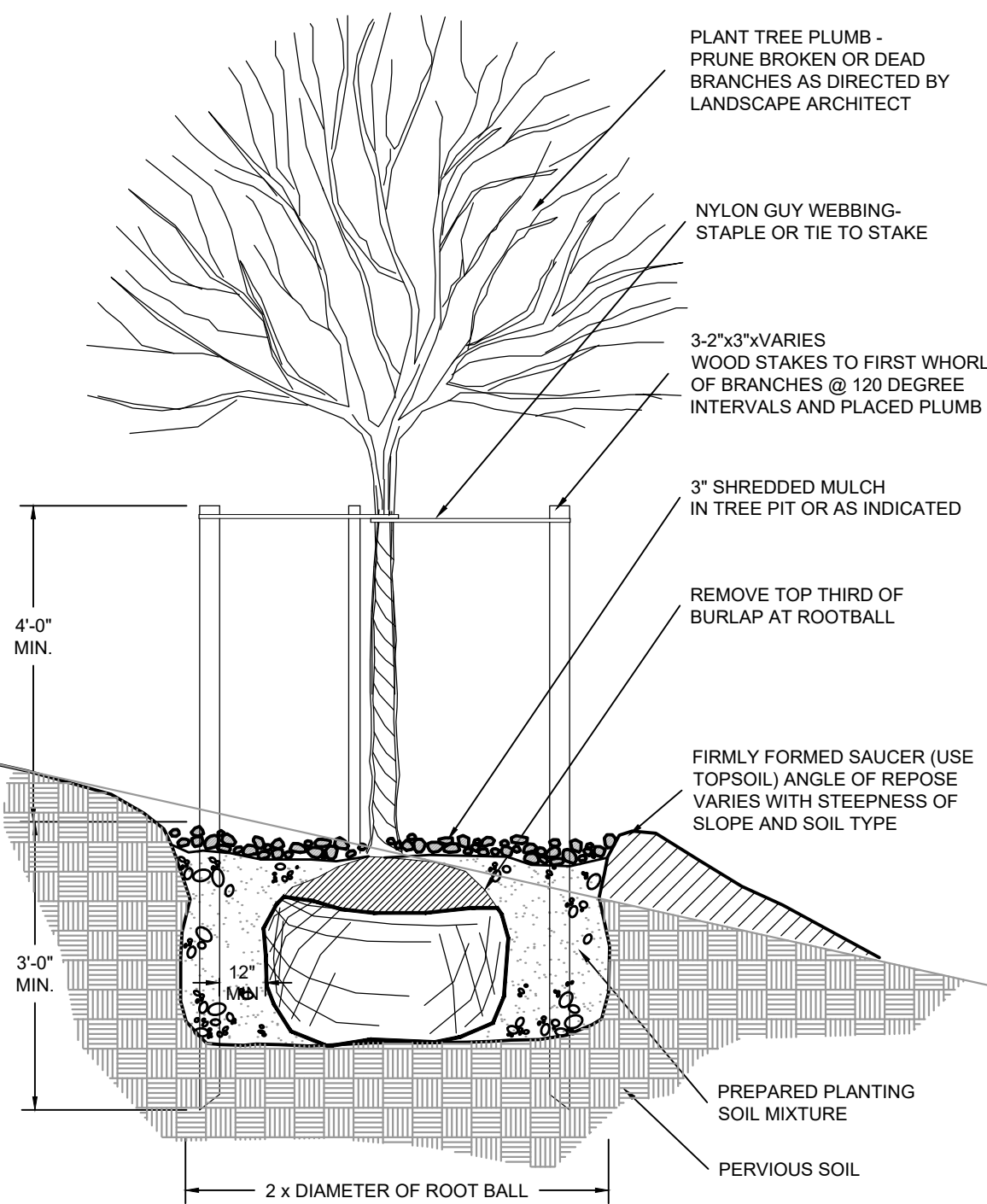
PERENNIAL PLANTING
NOT TO SCALE



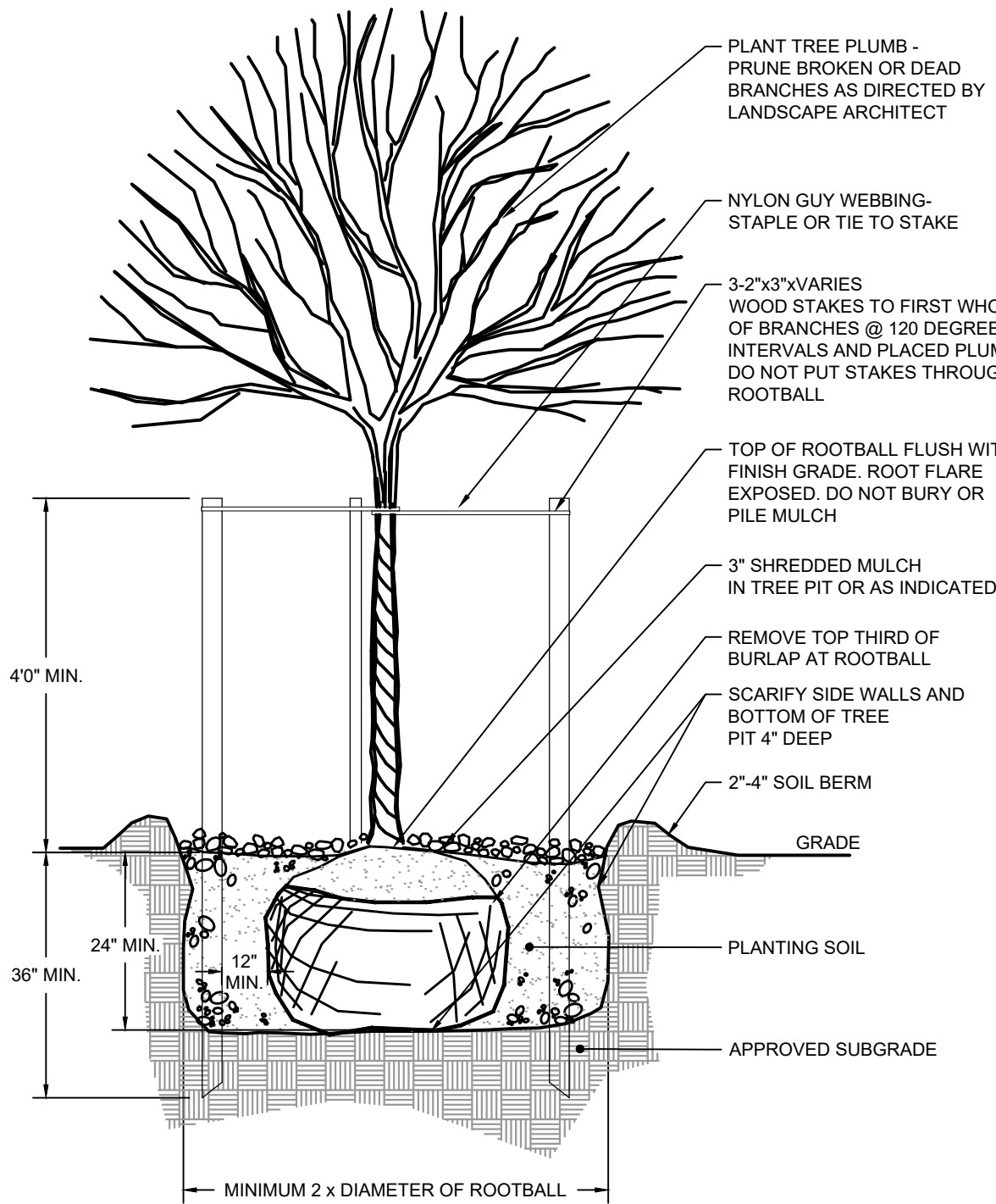
PLUG PLANTING
NOT TO SCALE



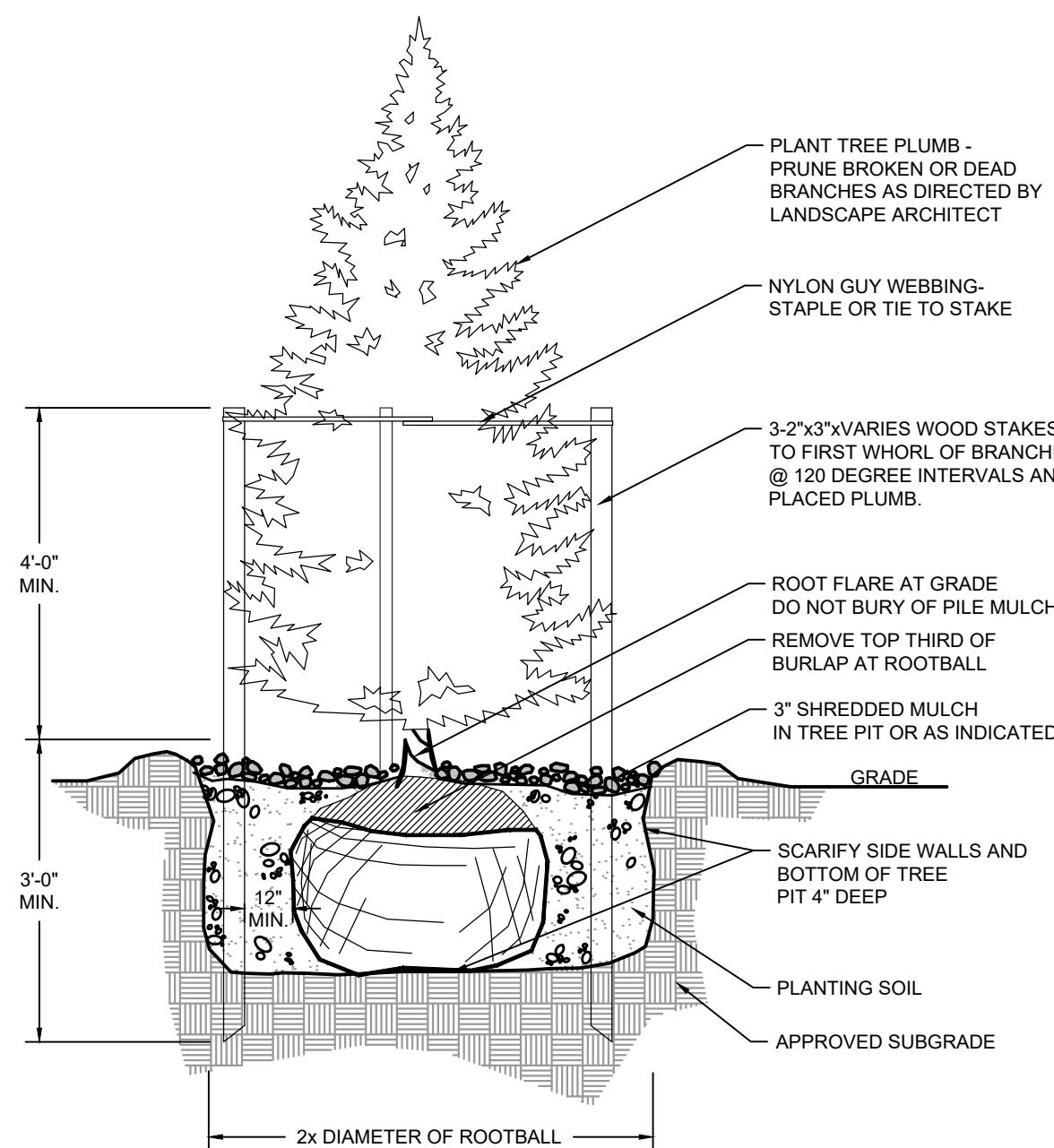
SHRUB PLANTING
NOT TO SCALE



TREE PLANTING ON SLOPE
NOT TO SCALE

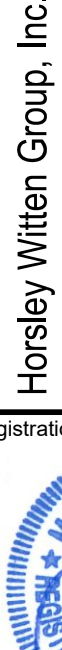


TREE PLANTING
NOT TO SCALE



EVERGREEN TREE PLANTING
NOT TO SCALE

PERMITTING SET ONLY
NOT FOR CONSTRUCTION

<p>SOUTHERN TIER PERMIT PLANS</p> <p>85 EDGARTOWN-VINEYARD HAVEN ROAD</p> <p>OAK BLUFFS, MASSACHUSETTS</p>						<p>LANDSCAPE DETAILS</p>					
<p>Plan Set:</p>						<p>Plan Title:</p>					
<p>Prepared For: Affirmative Investments, INC. 90 Route 6A Sandwich, MA 02563 Phone: (508) 833-6600 Fax: (508) 833-3150 Dated: February 10, 2022</p>											
<p>Survey Provided By: Horsley Witten Group, Inc. 33 Lyons St., 2nd Floor Boston, MA 02108 Phone: - Fax: ---</p>											
<p>Registration:</p>											
<p>Project Number: 22008</p>						<p>Sheet : 18 of 18</p>					
<p>Sheet Number: L - 3</p>											