

GOAL 3: Circuit/Kennebec

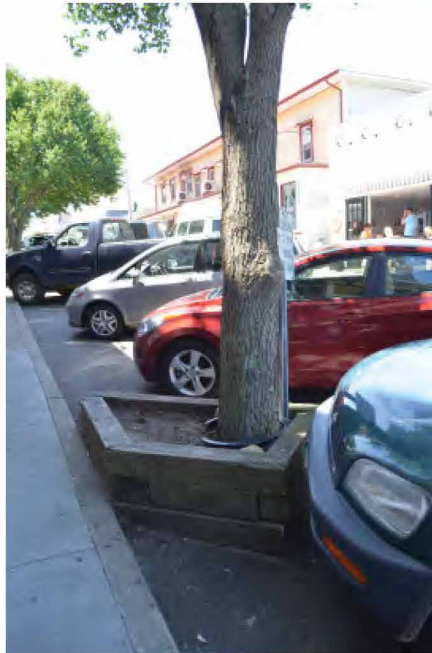
Improve/enlarge the Circuit/Kennebec Avenue pedestrian experience while providing a net parking gain within a 5-minute walk and preserving parking near convenience businesses.

3.3

3.3 Circuit/Kennebec Existing Conditions: Photos



Narrow Brick Sidewalk on Circuit Avenue



Tree Planter on Circuit Avenue



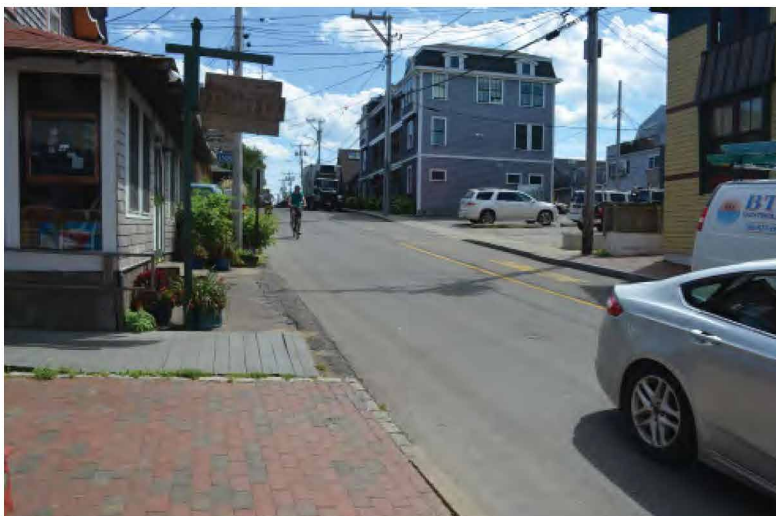
No Sidewalk or Crosswalk on Kennebec Avenue



Blocked View into Healey Square



Lack of Wayfinding at Circuit/Kennebec Avenue Intersection

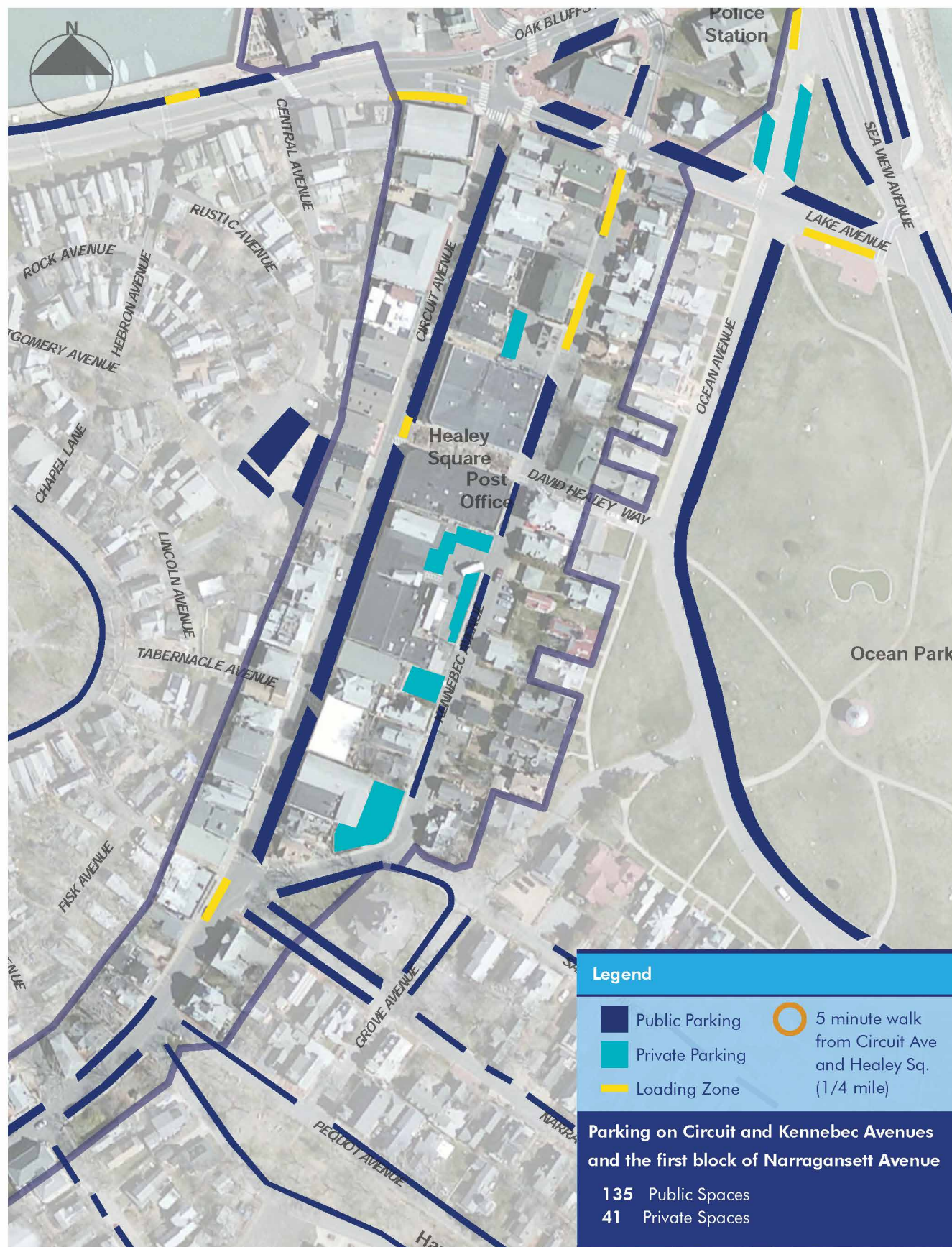


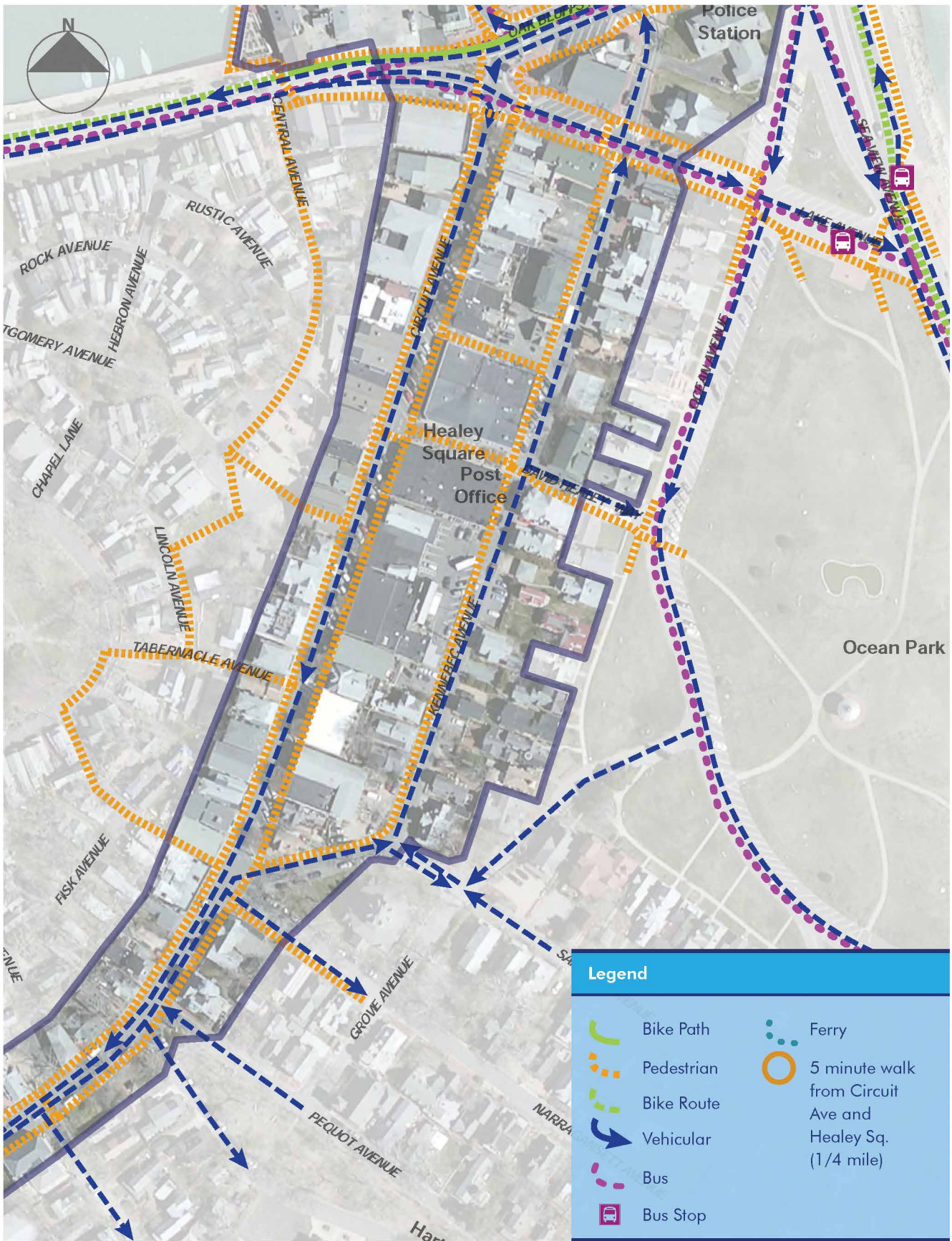
Lack of Pedestrian Infrastructure on Kennebec Avenue

The need for wayfinding, and clear pedestrian, vehicular and bicycle infrastructure is apparent in many existing photos. Small or non-existent sidewalks create an unsafe and unwelcoming environment for pedestrians who would benefit from street-side seating and a buffer from moving vehicles. Street trees provide shade but are all the same age and species and their life expectancy is unclear.



3.3 Circuit/Kennebec Existing: Parking

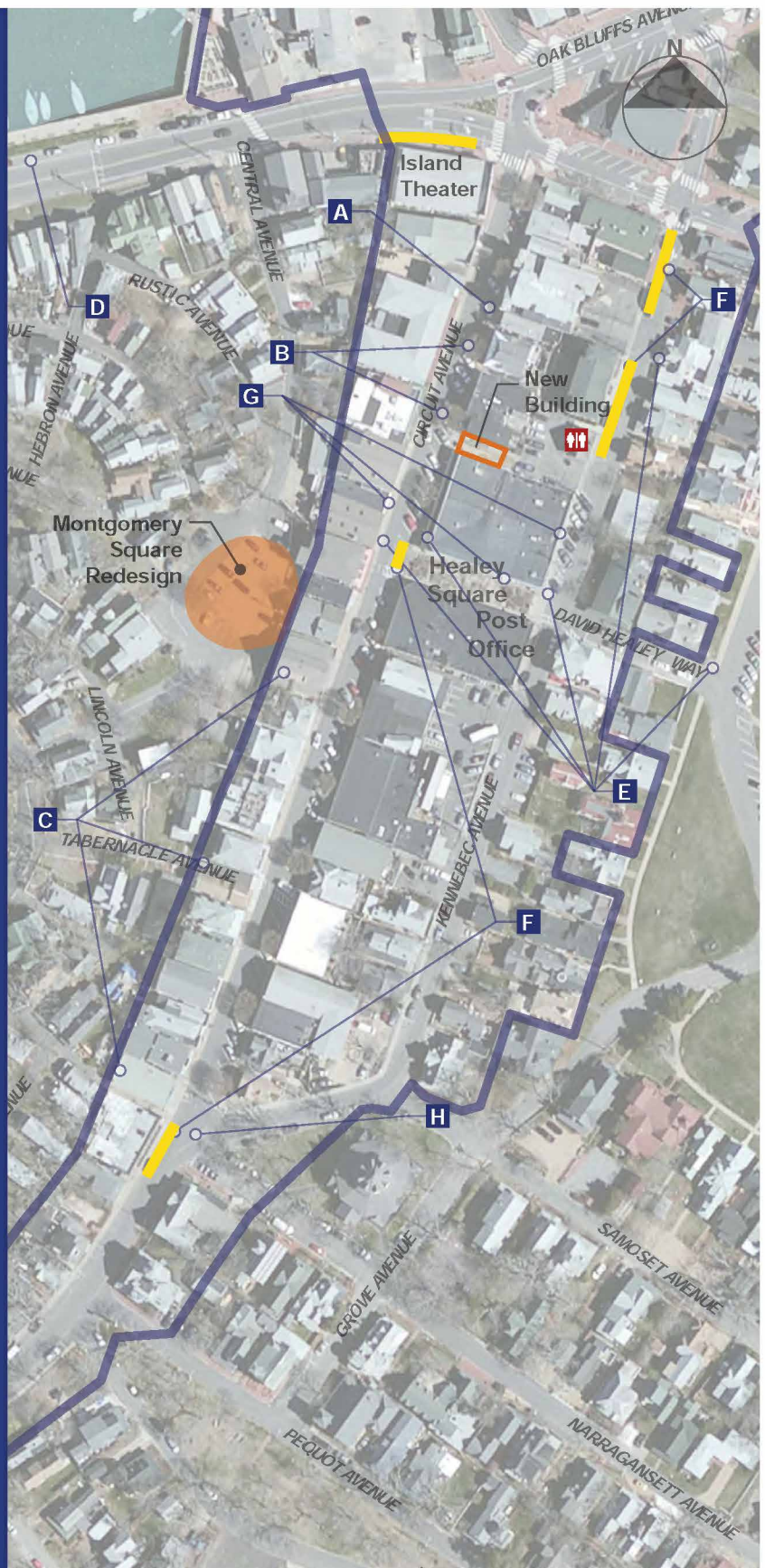


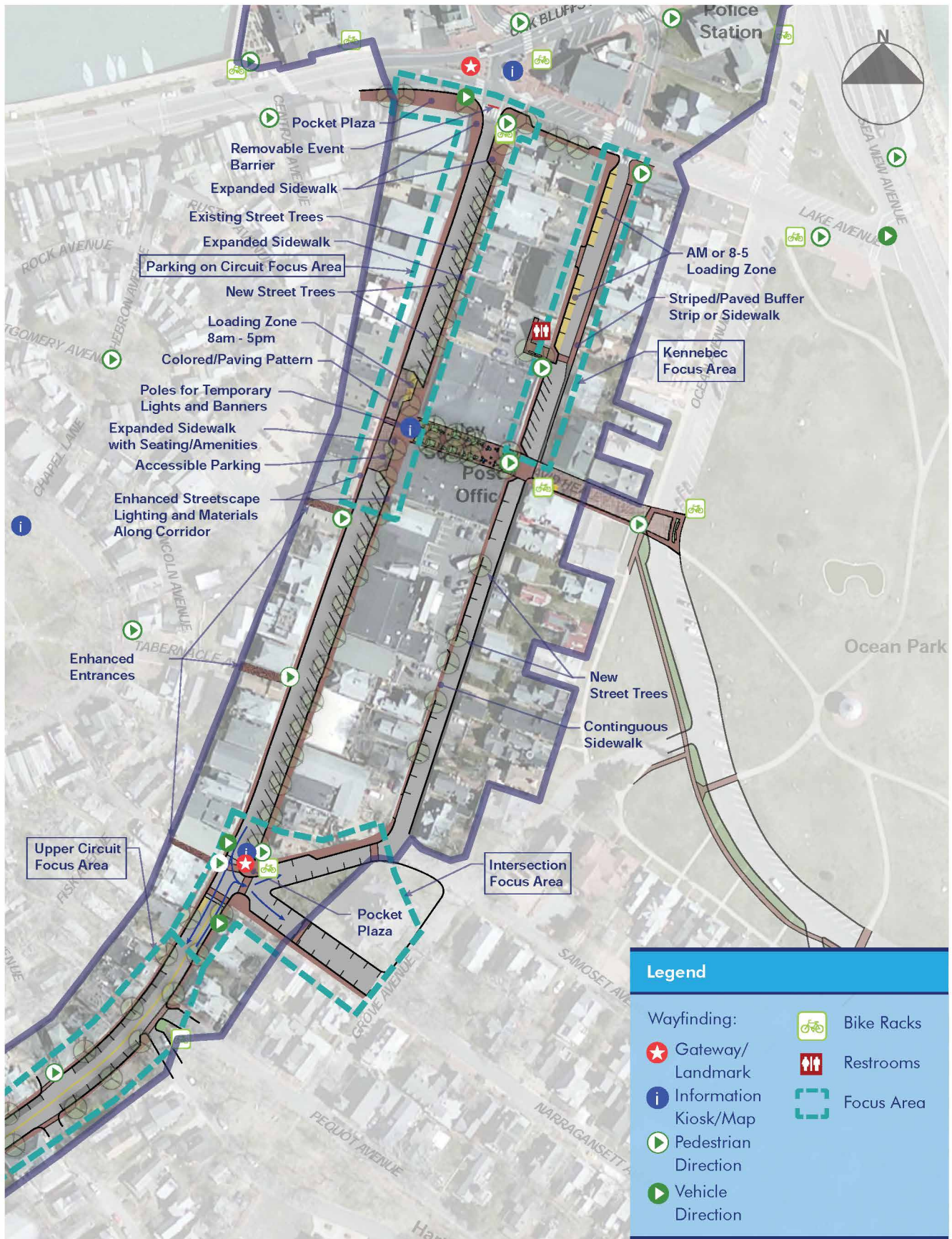


3.3 Circuit/Kennebec Existing: Calibrated Goals

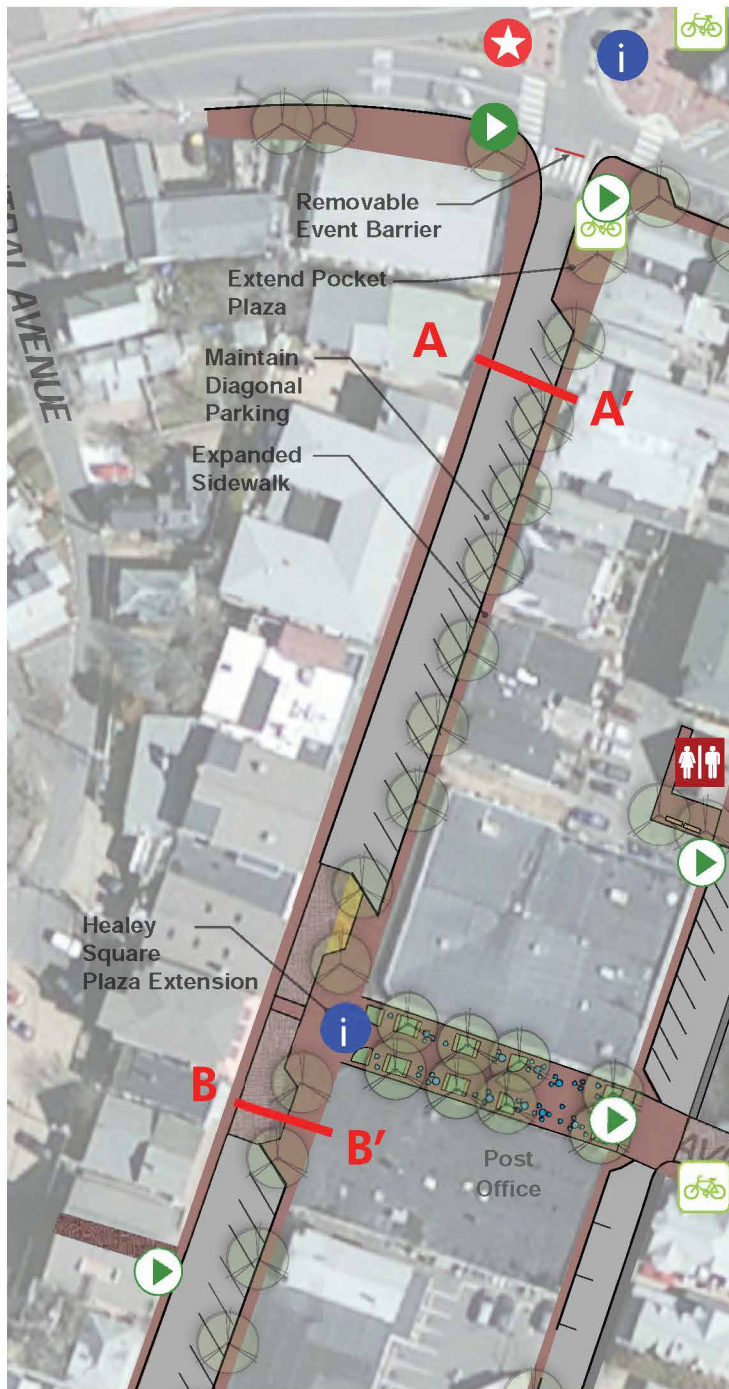
Goals

- A.** Widen/replace existing sidewalks on Circuit Ave with a preference to preserve as many existing parking spaces as possible and maximize sidewalk width.
- B.** Review the existing street trees to determine life span and future options; sustaining trees on Circuit Ave; benches/seating areas under the trees. Possible incorporation of trash/cigarette receptacles.
- C.** Work with the MVCMA to make the MVCMA entrances more experience/pedestrian friendly including various wayfinding options.
- D.** Explore parking options from Nancy's restaurant to Our Market on both sides of the road. Create pedestrian friendly walkways to the MVCMA, harbor and parks
- E.** Link Circuit, Kennebec and Ocean Park sidewalks and pedestrian areas including lines of sight to the Park and Ocean. Provide safe pedestrian access to Kennebec businesses. Explore more loading zone time and locations.
- F.** Review and provide space for deliveries and trash pick-up on Circuit Ave and Kennebec Ave. Explore increasing the numbers/style of receptacles.
- G.** Explore uniform lighting typing Circuit Ave, Healey Square and Kennebec Ave together. Continue to work with existing light poles provided through the Friends of Oak Bluffs.
- H.** Explore traffic calming, parking options and pedestrian experience around the Union Chapel with a potential monument at the end of Circuit Ave. Link the walkways to the rest of the commercial district all the way to Uncas Ave.





3.3 Circuit/Kennebec Proposed: Parking on Circuit Ave



Pocket Plaza in Somerville, MA



Temporary barrier for events

Legend

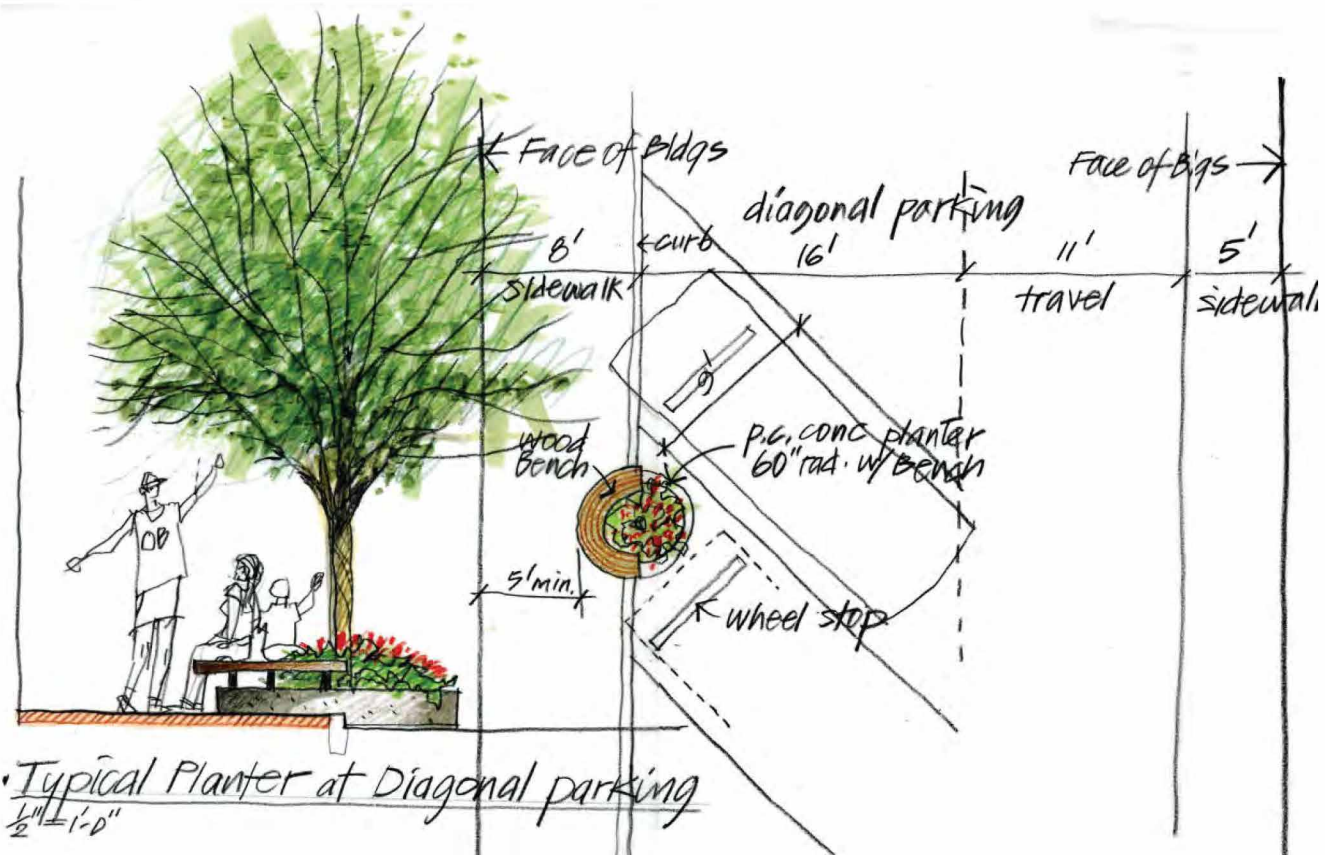
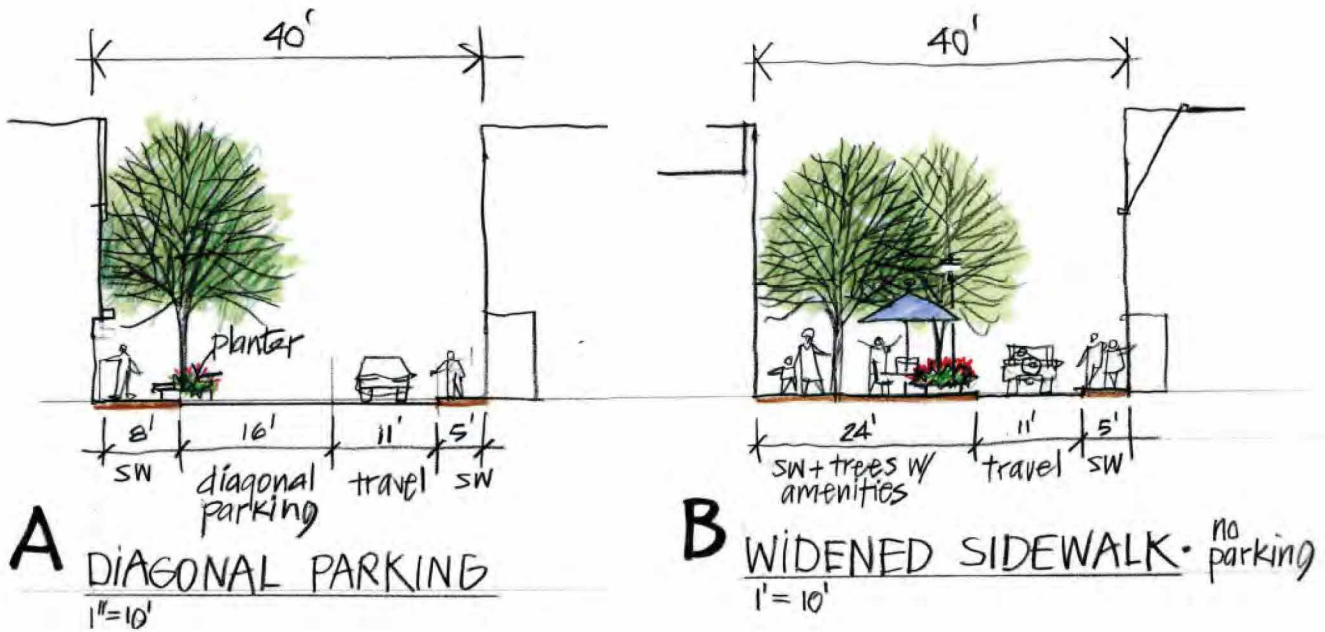
Wayfinding:

- Gateway/Landmark
- Information Kiosk/Map
- Pedestrian Direction
- Vehicle Direction

- Bike Racks
- Restrooms

The consensus Circuit Avenue vehicular/pedestrian balance is to maintain as much of the existing angled parking as possible while implementing small yet impactful localized parking-to-pedestrian conversions at Oak Bluffs Avenue and Healey Square. These pocket plazas function as small outdoor rooms, with potential for enhanced landscaping, trees, a bench or two, and special paving materials. The Oak Bluffs Avenue pocket plaza serves as “the invitation” to Circuit Avenue from Oak Bluffs Avenue and points beyond, and is especially useful on the east side of this stretch of Circuit Avenue where the existing sidewalk width becomes very narrow. The small plaza extension of Healey Square is a critical element of the overall concept to better connect Circuit Avenue, Kennebec Avenue, and Ocean Park.

A temporary bollard/signage location at the foot of Circuit would be useful when closing the road for events.



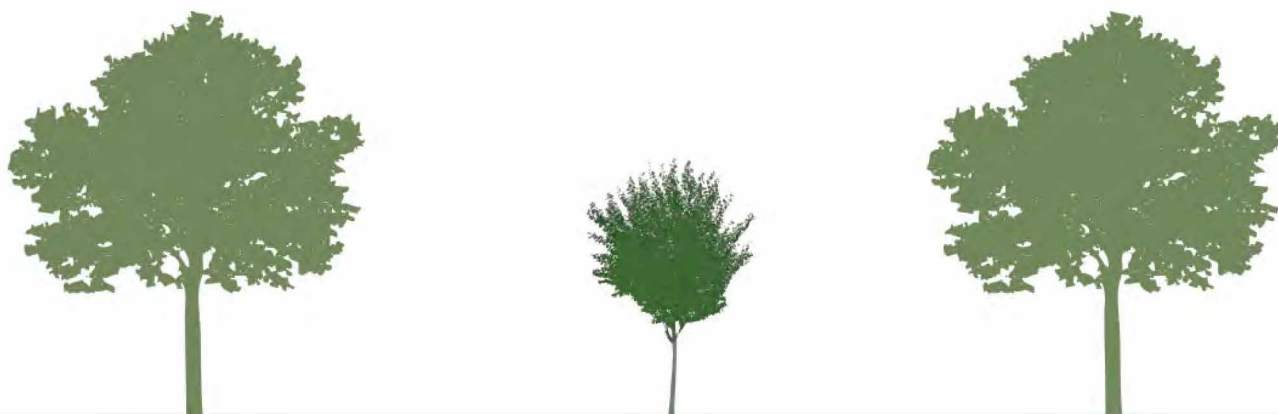
Circuit Avenue cross sections include angled parking, sidewalk expansion, tree planters with seating, and flexible plaza zones with additional amenities potentially including additional trees and outdoor seating.

Expanding the sidewalk will allow for space to retrofit the existing tree planters along Circuit. The triangles created by the angled parking can be utilized to enhance these spaces for more defined seating areas at the trees, and additional sidewalk space elsewhere.

3.3 Circuit/Kennebec *Proposed: Street Trees*

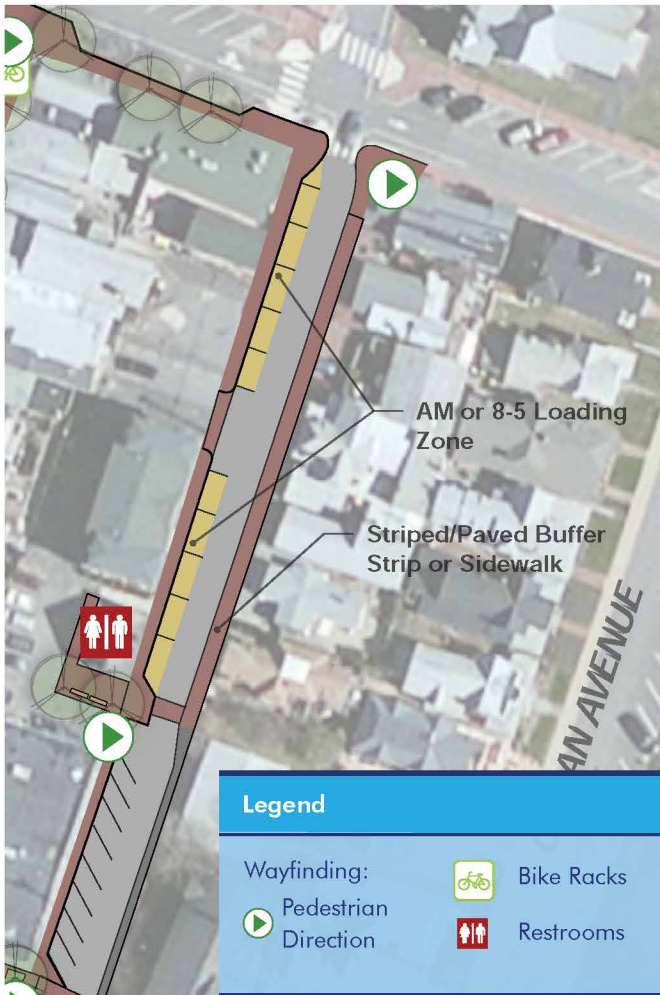


Callery Pear Trees on Circuit Avenue



The existing street trees along Circuit have many benefits from creating shade and calming traffic to intercepting and cleaning stormwater. The trees were all planted the same year, therefore many of them may decline around the same time. Regularly inspecting the existing trees, removing the ones in poor health and planting new trees will keep the urban forest along Circuit Avenue healthy. An Urban Forest Plan, including a succession plan, will create a vision and strategy to ensure that the town has a healthy and thriving diverse tree canopy in the years to come. (See more in Goal 5.)

Planting street trees on Kennebec and in areas along Upper Circuit with a consistent group of species and spacing will help define the area as part of downtown Oak Bluffs.



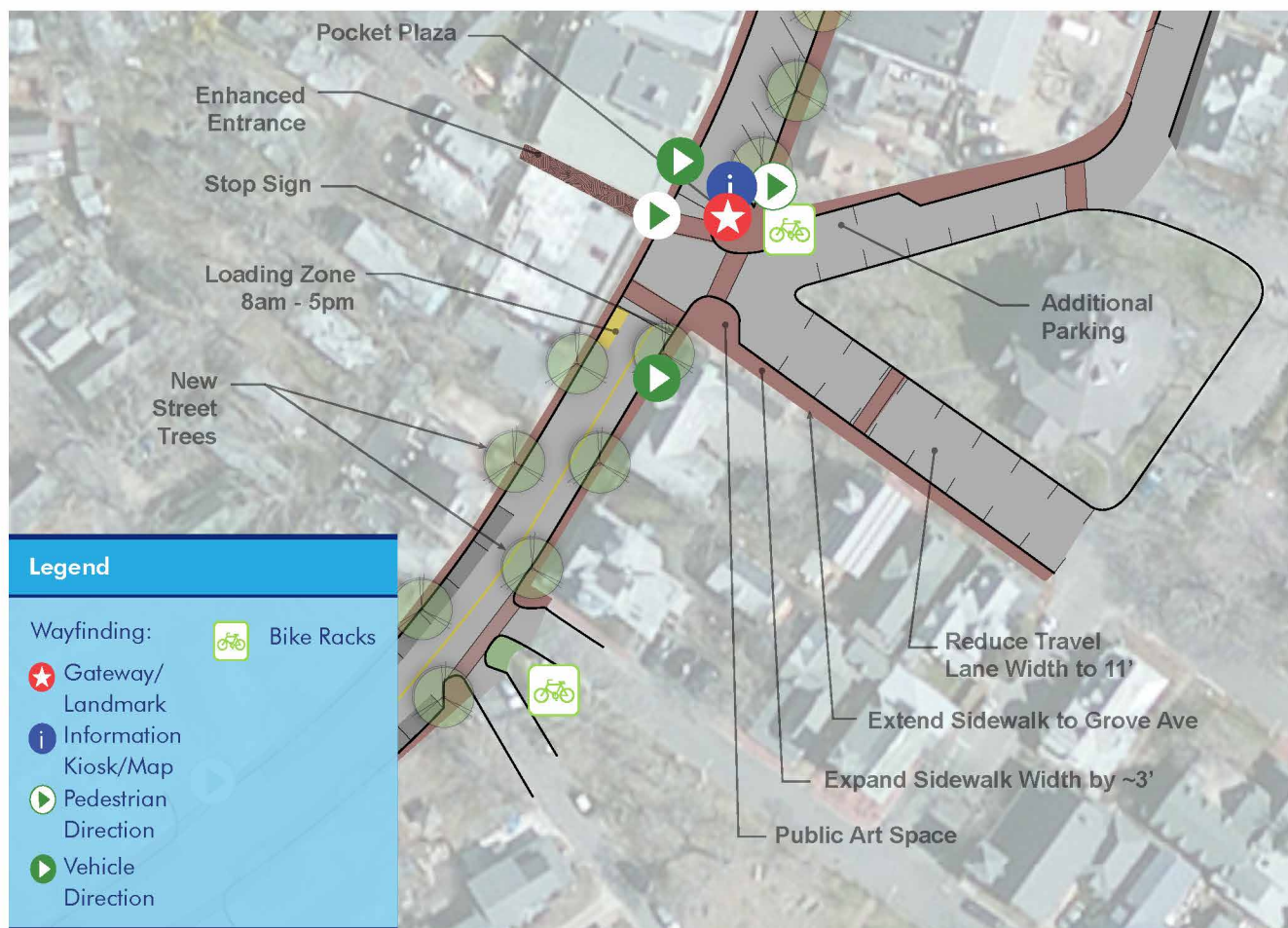
Loading Zone Sign



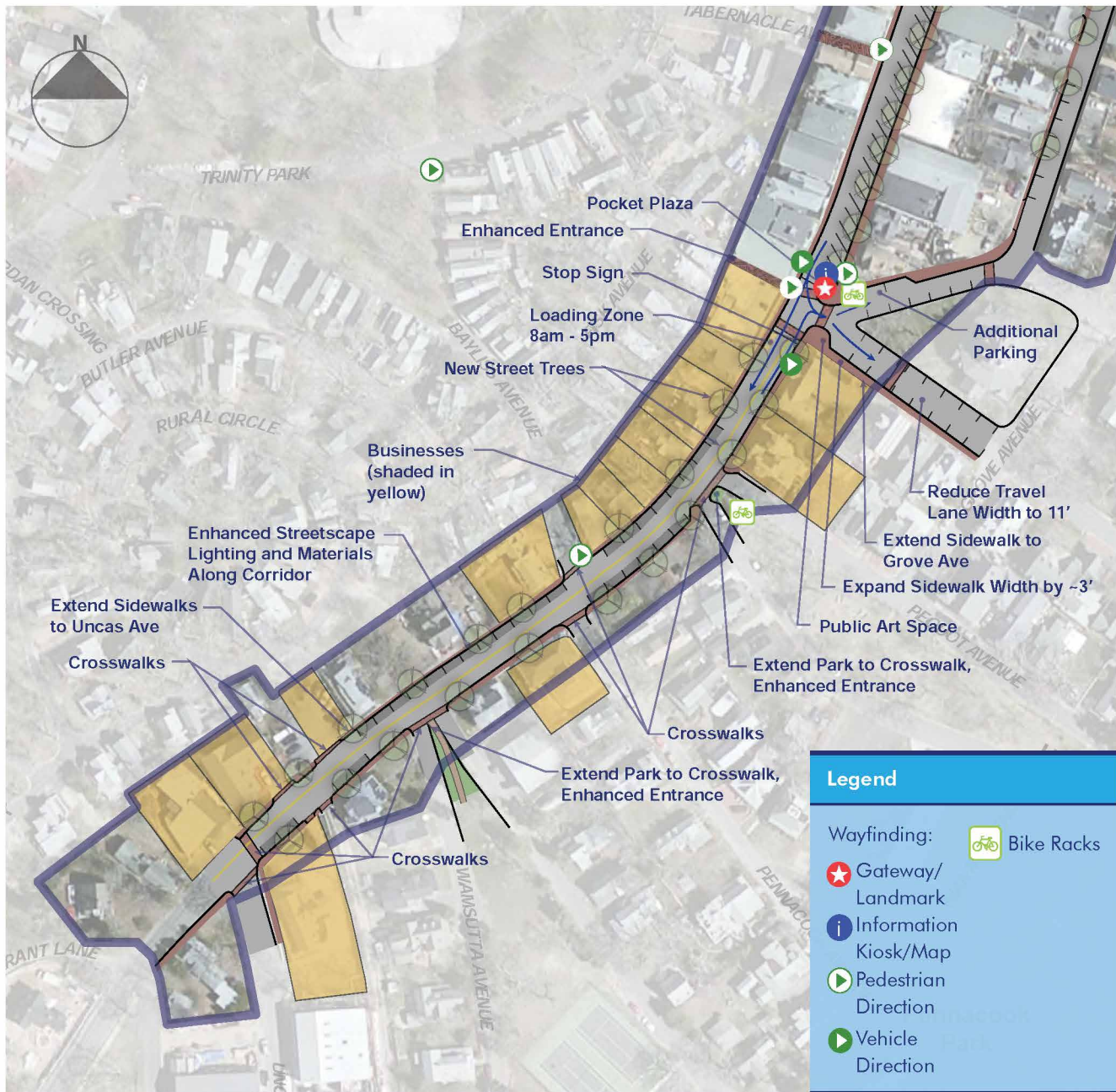
Paint Defining Expanded Sidewalk

Kennebec Avenue continues to evolve as a commercial destination, despite challenges presented by its extremely narrow width and the need to provide rear parking and loading access to businesses located on the east side of Circuit Avenue. Simple short term improvements such as creative painting of a 3-foot wide pedestrian buffer in front of businesses on the east side of Kennebec, restricting loading on the west side to morning only or 9-5 to open up additional evening parking spaces to the public, and adding a crosswalk and landscaping to the public restroom will improve safety and enhance Kennebec Avenue’s special identity within the greater downtown.

3.3 Circuit/Kennebec Proposed: Intersection Redesign



View of Circuit Avenue and Kennebec Avenue Intersection with proposed pocket park, wayfinding, streetscape materials and public art.

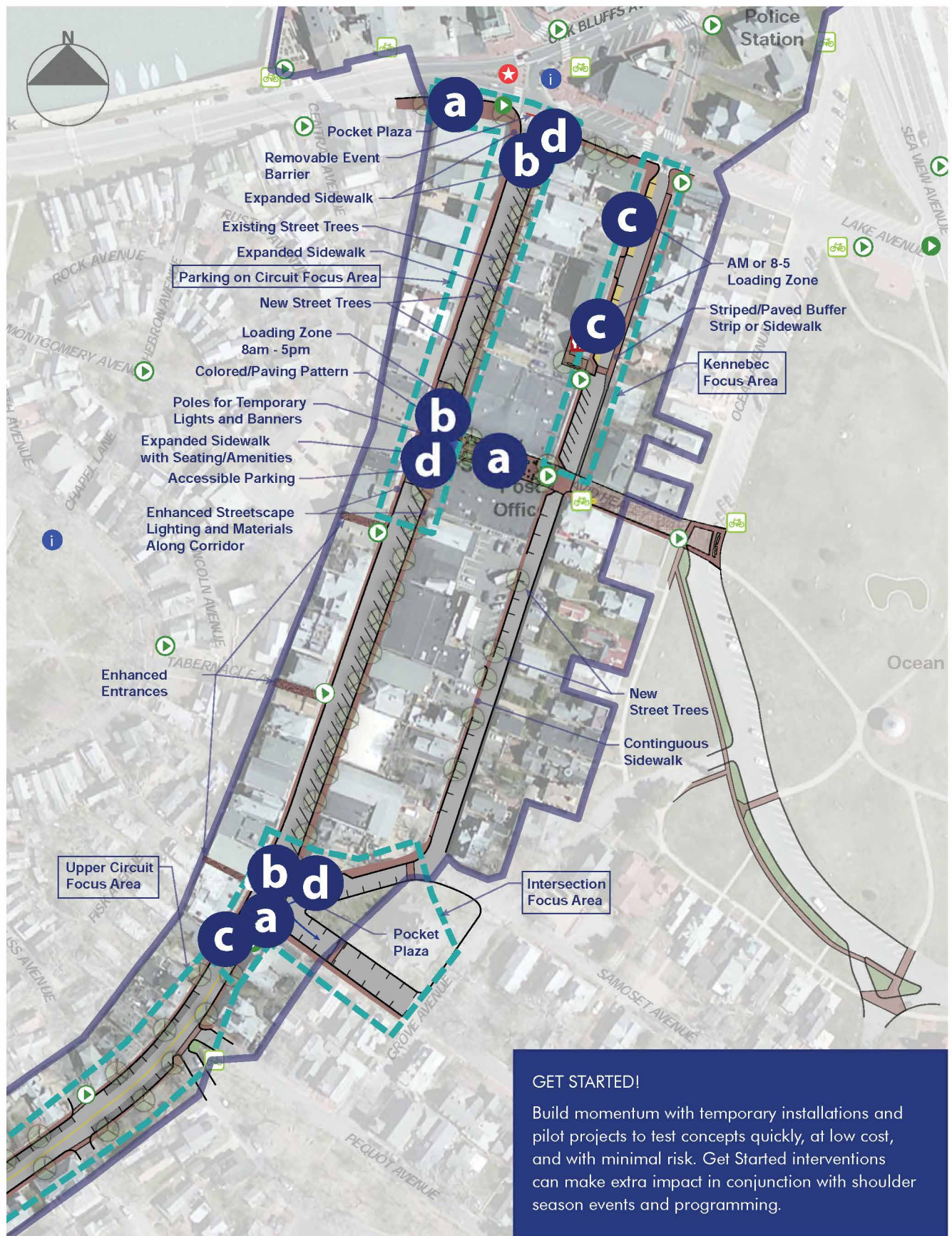


Upper Circuit Avenue is included within the project target area because it is a continuation of the downtown. The conceptual designs for the Circuit/Kennebec intersection and Upper Circuit are intended to draw people further southwest during errands and explorations as well as extend the sense of arrival.

The intersection of Circuit Avenue and Kennebec Avenue includes a bump out on both the north and south sides of the street. This design defines the vehicular right of way, increases clarity for both drivers and pedestrians, and makes crossing the intersection safer. An area on the south bump-out for public art acts as an invitation to cross the road and look closer. The north bump out hosts wayfinding elements as well as additional landscaping and amenities that will help increase the utility of this area as a gathering spot.

The Upper Circuit corridor will have the same streetscape materials as Lower Circuit, reinforcing the point that the business district continues south. The parks that connect into Upper Circuit would be extended so that they meet the sidewalk and crosswalk locations, enhancing the entrances into the parks.

3.3 Circuit/Kennebec Get Started!



- a** Install temporary (or permanent) artwork to create a sense of place, attract visitors throughout the year and add to the welcoming experience



- b** Use planters and paint for a pilot project in proposed bump-out/parklet locations on Circuit Ave



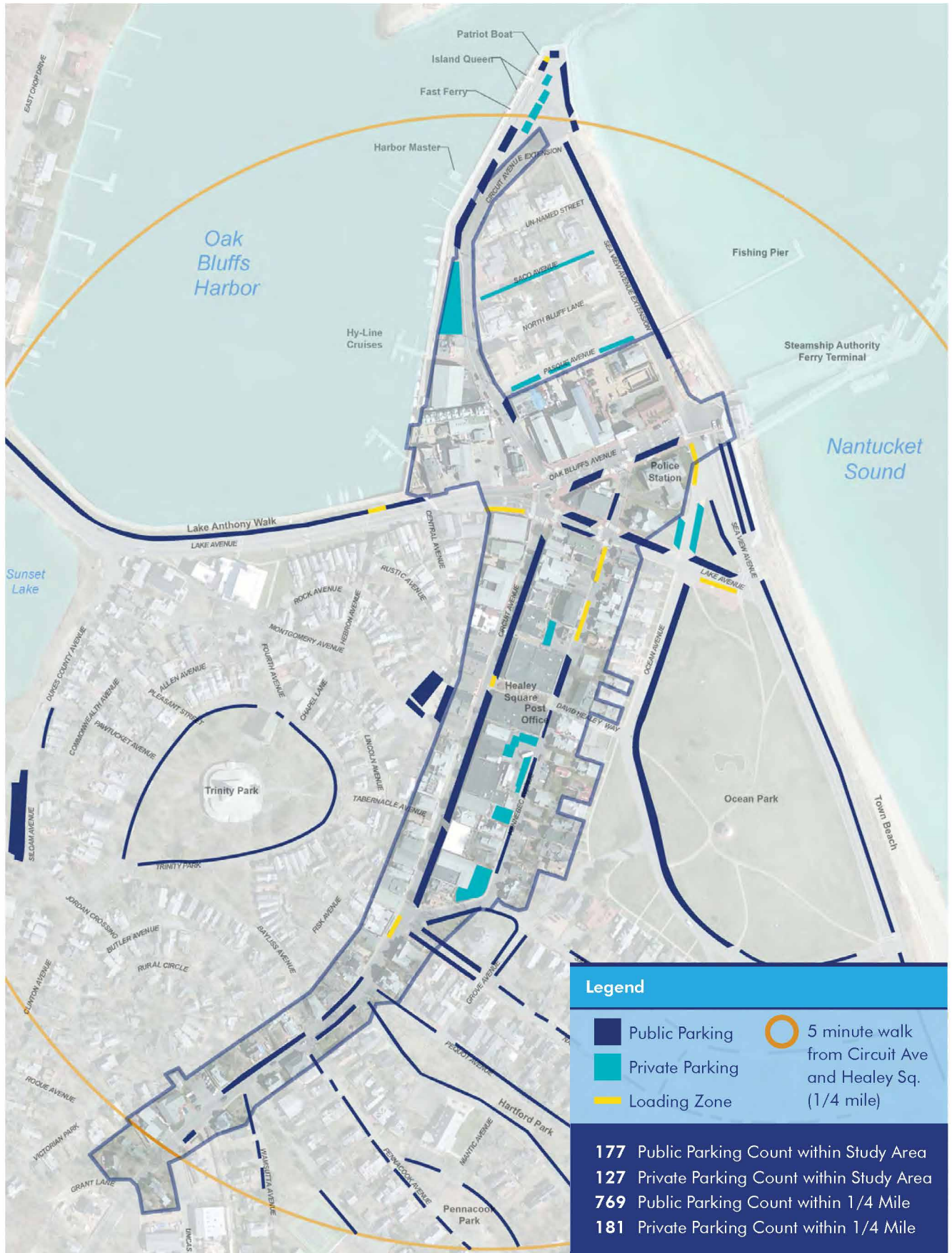
- c** Designate loading zone time frames, including AM only



- d** Install signage to inform people of future plazas

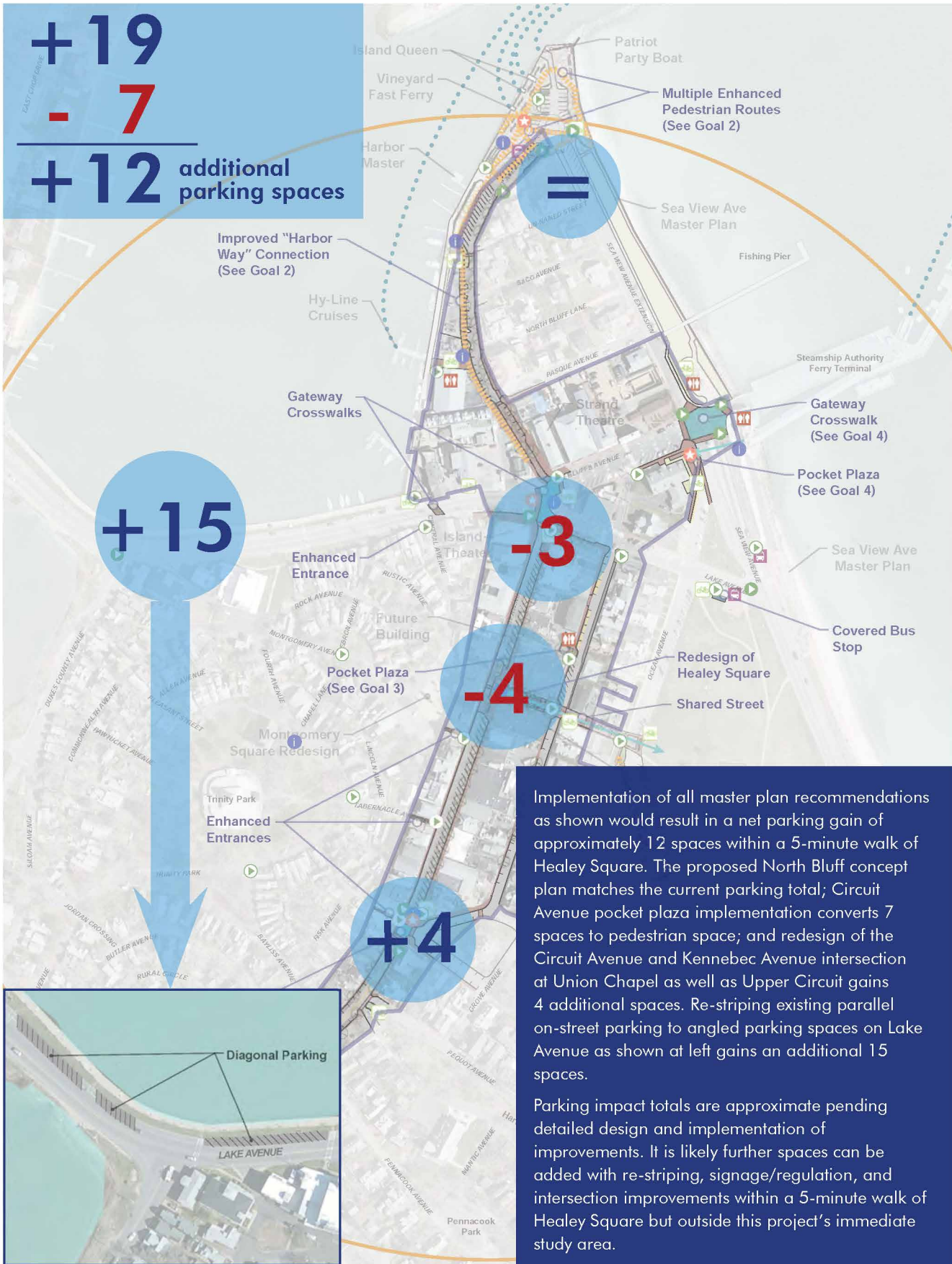


3* Parking Existing



+19
- 7

+12 additional parking spaces



Implementation of all master plan recommendations as shown would result in a net parking gain of approximately 12 spaces within a 5-minute walk of Healey Square. The proposed North Bluff concept plan matches the current parking total; Circuit Avenue pocket plaza implementation converts 7 spaces to pedestrian space; and redesign of the Circuit Avenue and Kennebec Avenue intersection at Union Chapel as well as Upper Circuit gains 4 additional spaces. Re-striping existing parallel on-street parking to angled parking spaces on Lake Avenue as shown at left gains an additional 15 spaces.

Parking impact totals are approximate pending detailed design and implementation of improvements. It is likely further spaces can be added with re-striping, signage/regulation, and intersection improvements within a 5-minute walk of Healey Square but outside this project's immediate study area.

