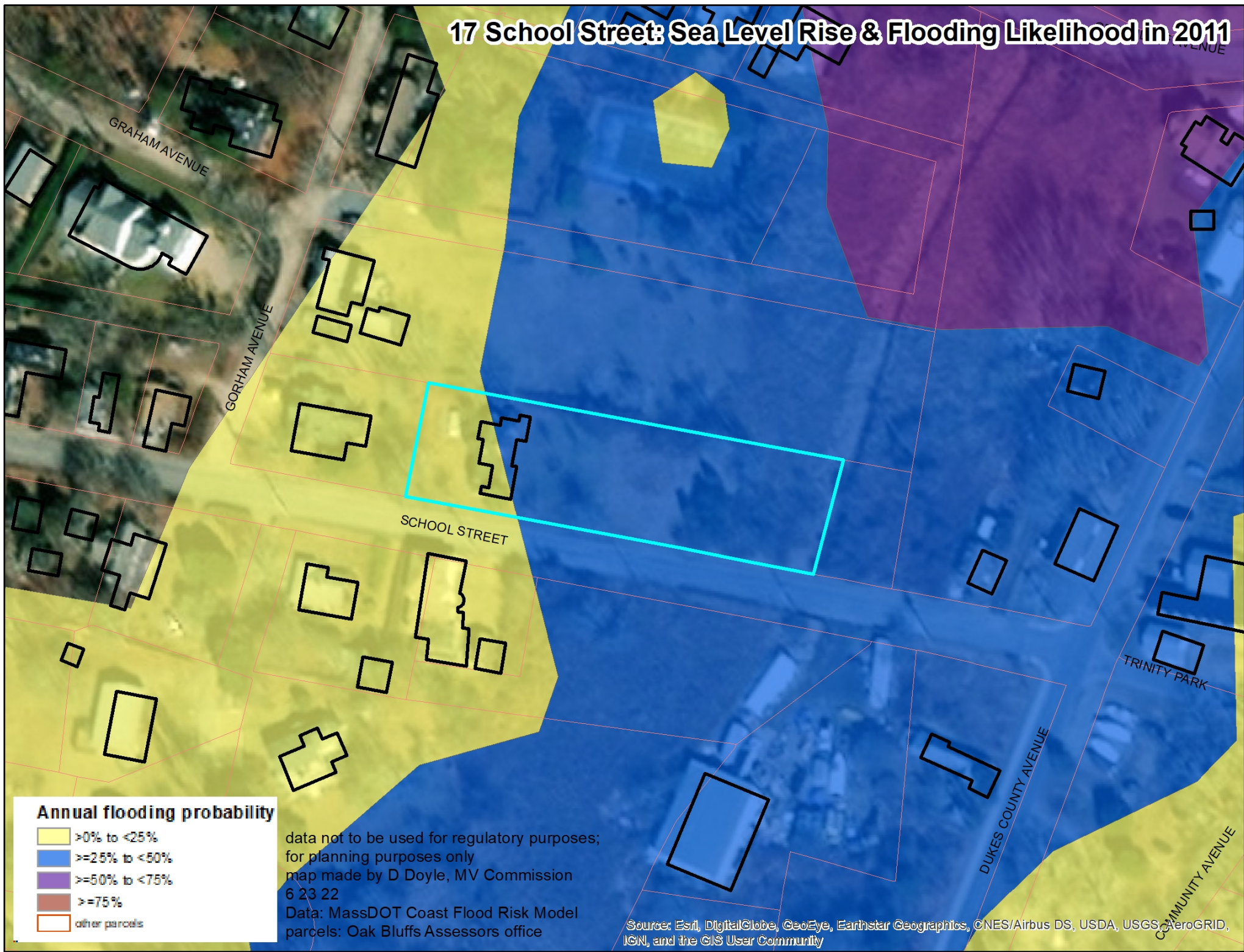
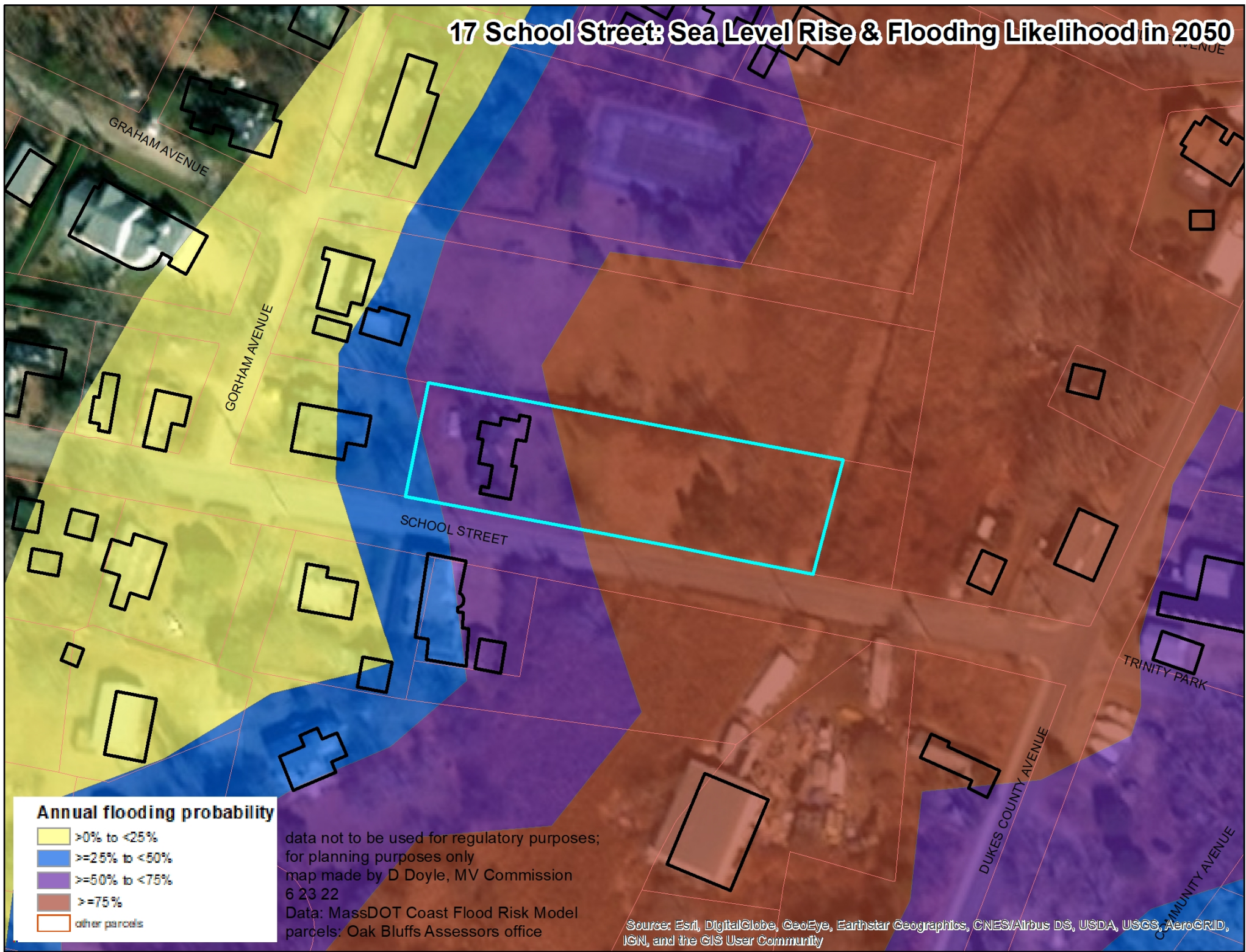


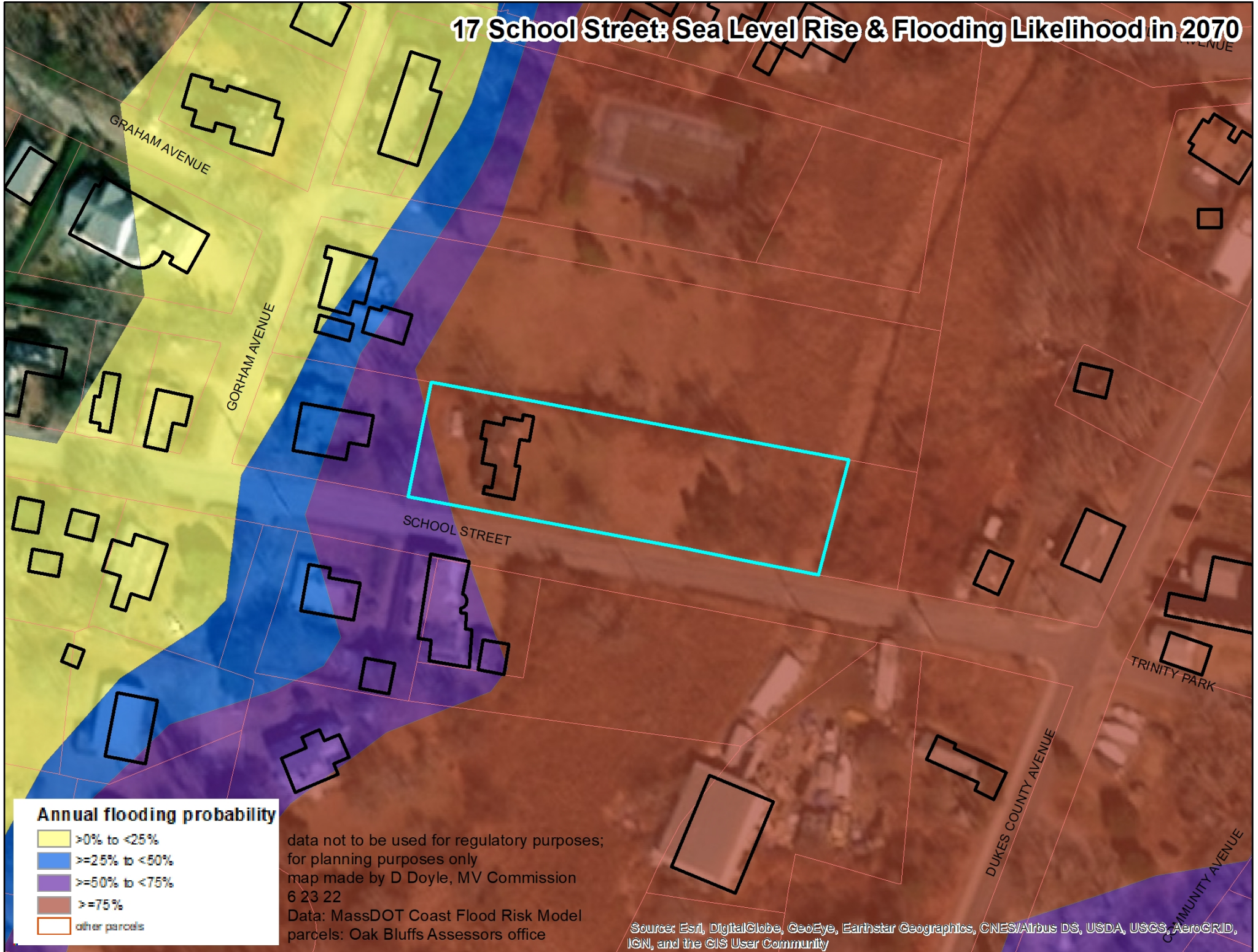
17 School Street: Sea Level Rise & Flooding Likelihood in 2011



17 School Street: Sea Level Rise & Flooding Likelihood in 2050



17 School Street: Sea Level Rise & Flooding Likelihood in 2070



Annual flooding probability

| | |
|-------------|---------------|
| Yellow | >0% to <25% |
| Blue | >=25% to <50% |
| Purple | >=50% to <75% |
| Brown | >=75% |
| Red outline | other parcels |

data not to be used for regulatory purposes;
for planning purposes only
map made by D Doyle, MV Commission
6 23 22
Data: MassDOT Coast Flood Risk Model
parcels: Oak Bluffs Assessors office

Source: Esri, DigitalGlobe, GeoEye, Earthstar Geographics, CNES/Airbus DS, USDA, USGS, AeroGRID, IGN, and the GIS User Community