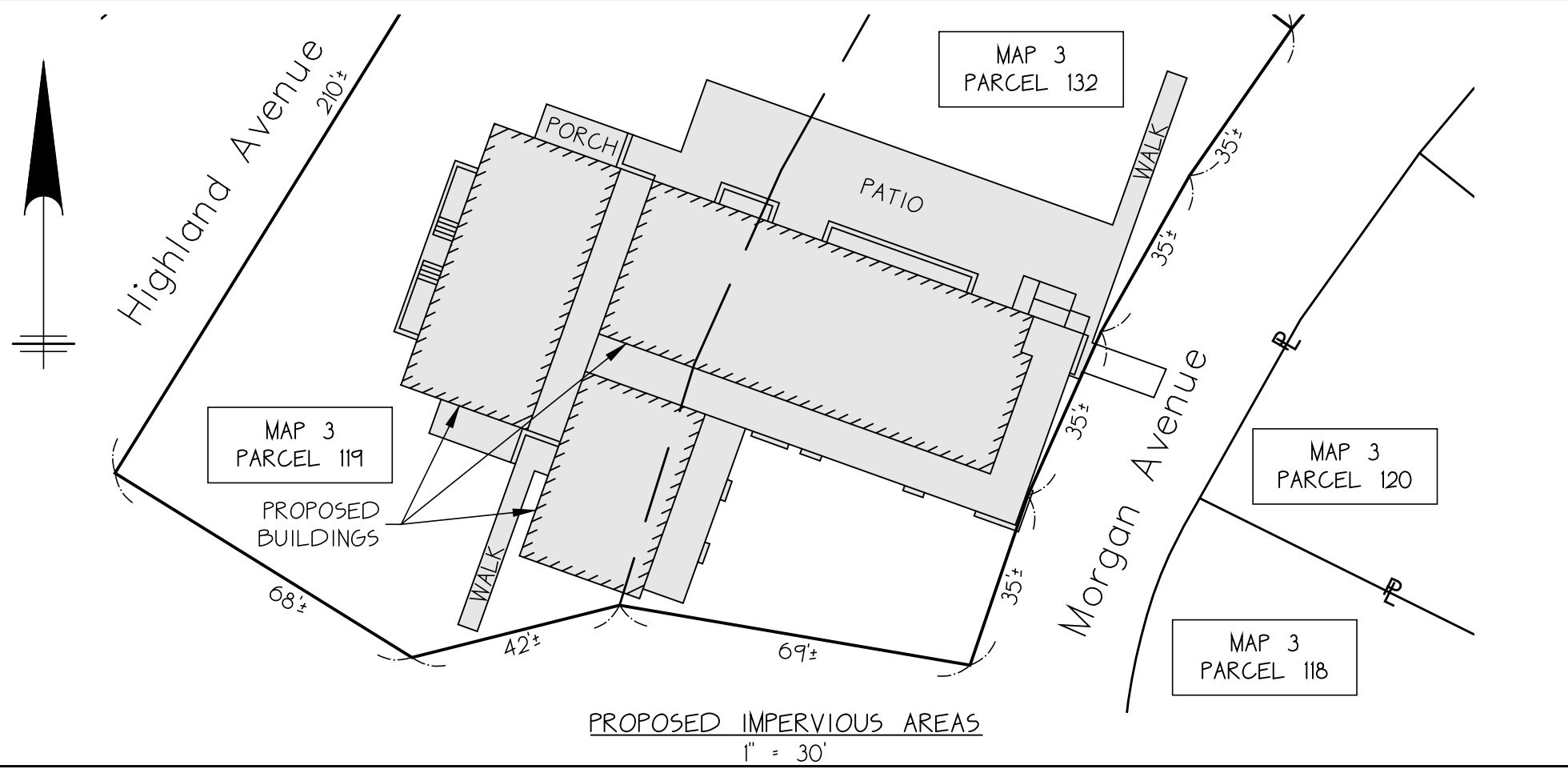


	IMPERVIOUS AREAS	PERCENTAGE
EXISTING	4,409± S.F.	15.9%
PROPOSED	9,367± S.F.	33.9%

APPROXIMATE LOT AREA:
ASSESSOR PARCELS 3-119 AND 3-132= 27,656± SQ. FT.



*Existing & Proposed Impervious Areas Sketch
in
Oak Bluffs, Massachusetts
Assessor Parcels 3-119 & 3-132
prepared for*

Eric P. Van Allen

*Scale 1"=30' September 20, 2021
Revision Date October 13, 2021
Revision Date November 23, 2021*



*P.O. Box 4458
107 Beach Road, Suite 202
Vineyard Haven, MA 02568
Phone (508) 693-9933 Fax (508) 693-4933*