



PLAN, 1" = 20'-0"



Red Maple, *Acer rubrum*



Shad, *Amelanchier canadense*



American Holly, *Ilex opaca*



Eastern Red Cedar, *Juniperus virginiana*



Beetlebung, *Nyssa sylvatica*



Sweet Pepperbush, *Clethra alnifolia* "Hummingbird"



Cray Dogwood, *Cornus racemosa*



Oakleaf Hydrangea, *Hydrangea quercifolia* "Pe Wee"



Winterberry, *Ilex verticillata*



Bayberry, *Myrica pennsylvanica*



Smooth sumac, *Rhus glabra*



Sassafras, *Sassafras albidum*



Steeplebush, *Spiraea tomentosa*



Arrowwood Viburnum, *Viburnum dentatum*



American Cranberrybush, *Viburnum opulus americanum*



SECTION, 1/4" = 1'-0"

SOUTH SCREEN PLANTING



KEY PLAN

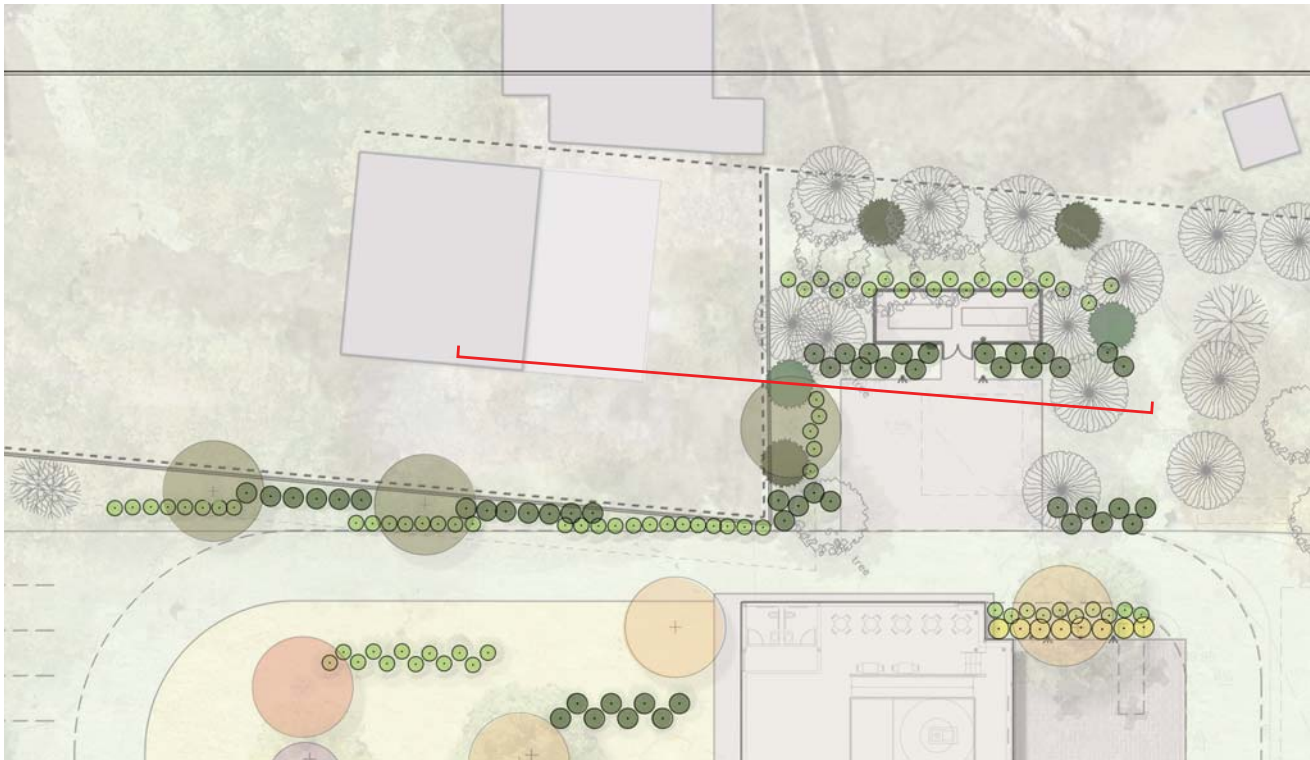


EXISTING



PROPOSED

SOUTH SCREEN PLANTING



PLAN, 1" = 10'-0"



American Holly, *Ilex opaca*



Eastern Red Cedar, *Juniperus virginiana*



Beetlebung, *Nyssa sylvatica*



Red Maple, *Acer rubrum*



Sweet Pepperbush, *Clethra alnifolia* 'Hummingbird'



Bayberry, *Myrica pennsylvanica*



Arrowwood Viburnum, *Viburnum dentatum*



SECTION, 1/4" = 1'-0"

NORTH SCREEN PLANTING



KEY PLAN



EXISTING



PROPOSED: PHASE 1



PROPOSED: PHASE 2

NORTH SCREEN PLANTING: VIEW FROM DALY'S DECK



KEY PLAN



EXISTING



PROPOSED: PHASE 1

NORTH SCREEN PLANTING: VIEW FROM FRONT LAWN



PLAN, 1" = 20'-0"



Pin Oak, *Quercus palustris*



American Holly, *Ilex opaca*



Eastern Red Cedar, *Juniperus virginiana*



SECTION, 1/4" = 1'-0"

WEST SCREEN PLANTING