

Martha's Vineyard Statistical Profile

February 2019



www.mvcommission.org

PO Box 1447, 33 New York Ave, Oak Bluffs, MA 02557

info@mvcommission.org

p-508-693-3453; f-508-693-7894

Economy

20

Economic overview, including cost of living and gross regional product: County, 2017	20
Total full- and part-time employment: County, 2006–2016	20
Labor force, employed, unemployed, unemployment rate: County, 2017 (monthly)	20
Seasonal unemployment rate: County, 2010–2017	21
Unemployment rate: County comparison and ranking, 2010–2018	22
Inflow and outflow of workers: County, 2011–2015	22
Median household and family income and benefits by town, 2010–2016	23
Median household income: ranking by town: 2010, 2016	23
Income per capita (towns), 2010–2016	24
Income inequality (Gini index) by town, 2010–2016	24
Net resident earnings: County, 1970–2016	24
Median earnings in last 12 months by town, 2010–2016	25
Median earnings by gender: County, 2016	25
Net earnings by place of residence: County, 1990–2016	25
Establishments, employees, payroll by industry: County, 2006–2016	26
Industry rankings (civilian employed population 16 and over): County, 2016	26
Top six industries by town (percent employed), 2016	27

Selected Industries

28

Agriculture

Farm employment, income and expenses: County, 2001–2016	28
---	----

Blue economy

Blue revenue, businesses, employees: County comparison, 2016	29
Blue economy as percent of total revenues, employees, businesses: County comparison, 2016	29
Dark and medium blue revenues: County, 2016	29

Construction

Wages and average monthly employment: County, 2005–2017	30
Wages by sub-industry: County, 2012–2016	30

Finance and real estate

Wages and average monthly employment: County, 2005–2017	31
Finance and insurance	
Wages by sub-industry; average monthly employment: County, 2011–2017	31
Real estate and rental leasing	
Wages by sub-industry; average monthly employment: County, 2011–2017	31
<i>Health and education</i>	
Wages and average monthly employment: County, 2005–2017	32
Healthcare and social assistance	
Wages by sub-industry; average monthly employment: County, 2011–2017	32
Education	
Wages by sub-industry; average monthly employment: County, 2011–2017	32
<i>Landscaping (services to buildings and dwellings)</i>	
Wages and average monthly employment: County, 2005–2017	33
<i>Leisure and hospitality</i>	
Wages and average monthly employment: County, 2005–2017	33
Wages by sub-industry: County, 2012–2016	34
<i>Membership associations and organizations</i>	
Wages and average monthly employment: County, 2005–2017	33
Wages by sub-industry, 2005–2017	34
<i>Public administration</i>	
Wages and average monthly employment: County, 2005–2017	34
Wages by sub-industry: County, 2012–2017	34
<i>Tourism</i>	
Domestic travel expenditures, payroll, tax receipts: County, 2012–2016	35
Domestic travel expenditures and payroll, tax receipts, employment; employment rate: County comparison, 2016	35
Domestic travel-generated employment and employment rate: County comparison, 2016	36
Domestic travel expenditures, state taxes, employees, payroll: County comparison, 2016	36
<i>Commercial fishing</i>	

Value of finfish, groundfish and invertebrate landings in Dukes County, 2006–2016	37
Value of shellfish landings in Dukes County, 2006–2016	38
<i>Nonprofits</i>	
Revenue and assets: Island, 2014–2016	39
Selected industries: Seasonality (employment) in Dukes County, 2012–2016	40
Average annual employment (all NAICS sectors): Dukes County, 2017	40

ECONOMY

Dukes County has a strongly seasonal economy, although each industry and town responds somewhat differently to the cycles. Unemployment typically declines in the spring, dropping further in summer, then climbing again in the fall when summer visitors depart. The number of annual jobs has drifted upward since 2010, following a plateau in the wake of the 2008 Recession, but Dukes County still has the second-highest unemployment rate in the state. At the same time, average unemployment in the county has declined significantly in all four seasons, indicating an increasingly year-round economy.

Economic overview, including cost of living and gross regional product: County, 2017

Source: Emsi

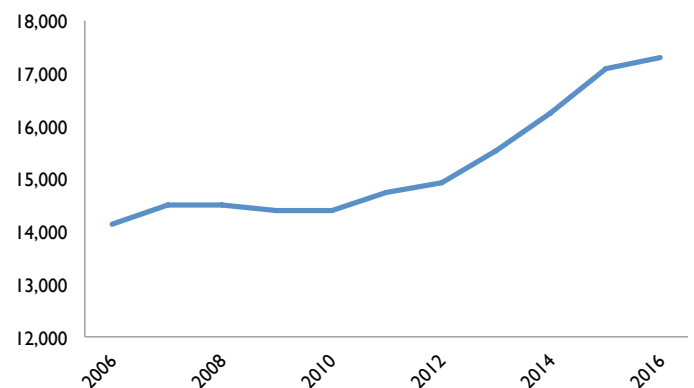
Population	17,378
Working-age population*	14,753
Labor force*	8,560
Cost of living index	133.3
GRP	\$1,248,520,113.46
Imports	\$1,509,965,559.30
Exports	\$1,238,090,199.17

* Annualized data by Emsi.

Total full- and part-time employment (number of jobs): County, 2006–2016

Source: Bureau of Economic Analysis

2006	14,136
2008	14,507
2010	14,386
2012	14,927
2014	16,251
2016	17,291

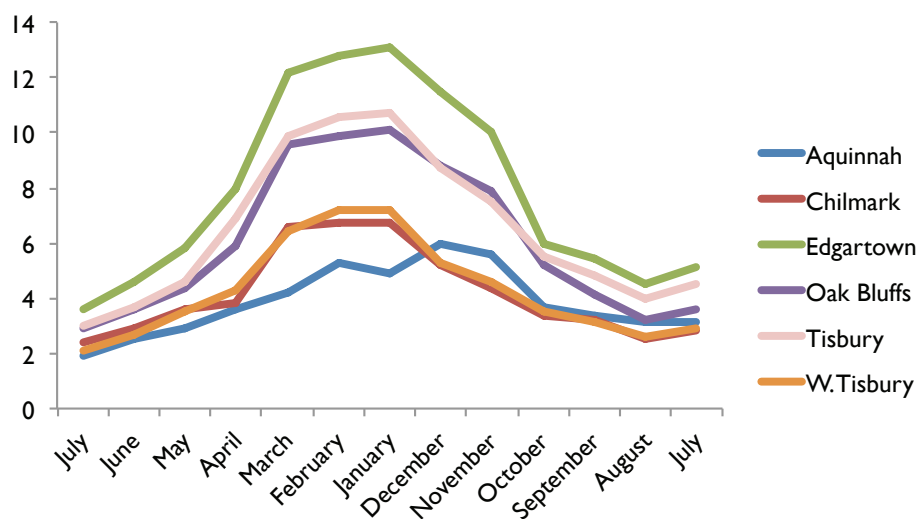


Labor force, employed, unemployed, unemployment rate: County, 2017 (monthly)

Source: Massachusetts Department of Unemployment Assistance

Period	Labor force	Employed	Unemployed	Unemployment rate
December (2016)	8,302	7,885	417	5.0
January	8,091	7,417	674	8.3
February	8,007	7,293	714	8.9
March	8,096	7,451	645	8.0
April	8,427	7,905	522	6.2
May	9,093	8,635	458	5.0
June	10,923	10,512	411	3.8
July	12,146	11,784	362	3.0
August	12,043	11,727	316	2.6
September	10,176	9,865	311	3.1
October	9,015	8,688	327	3.6
November	8,664	8,199	465	5.4
December	8,560	8,052	508	5.9
January (2018)	8,265	7,542	723	8.7

Unemployment Rate by Town, 2016

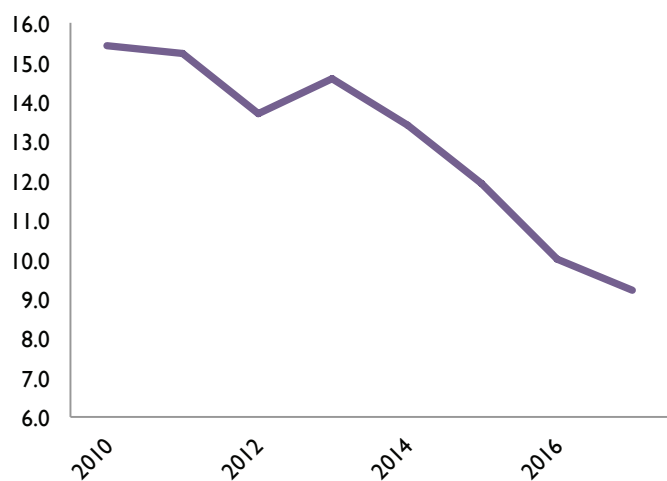


Seasonal unemployment rate: County, 2010–2017

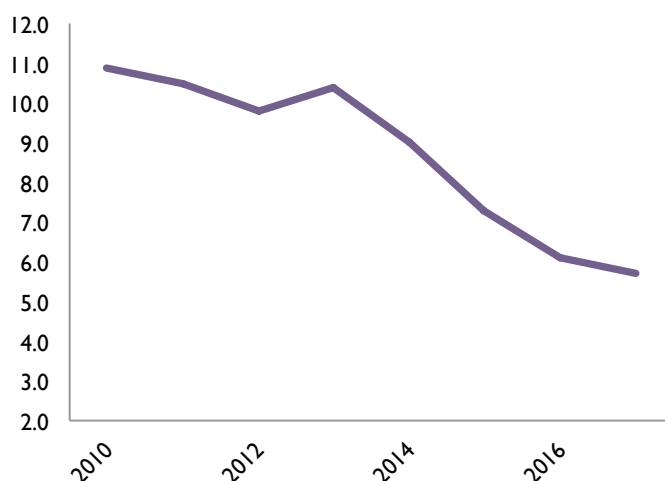
Source: Bureau of Labor Statistics

	Jan.	April	July	Oct.
2010	15.4	10.9	6.0	8.0
2011	15.2	10.5	5.7	7.3
2012	13.7	9.8	5.5	7.1
2013	14.6	10.4	5.8	7.1
2014	13.4	9.0	4.9	5.7
2015	11.9	7.3	3.8	4.6
2016	10.0	6.1	2.8	3.4
2017	9.2	5.7	2.6	3.3

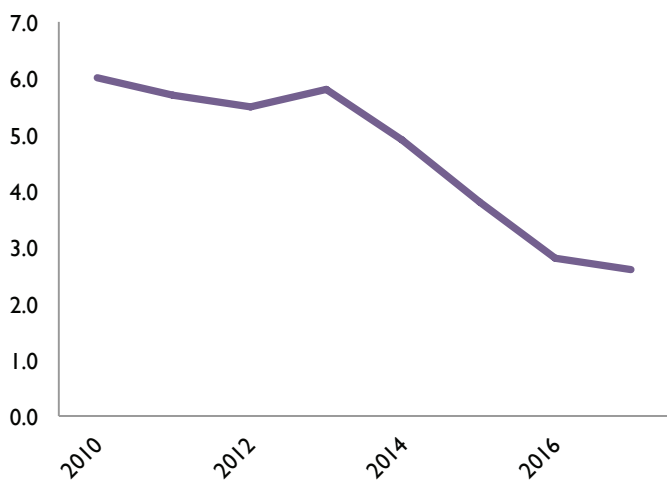
January



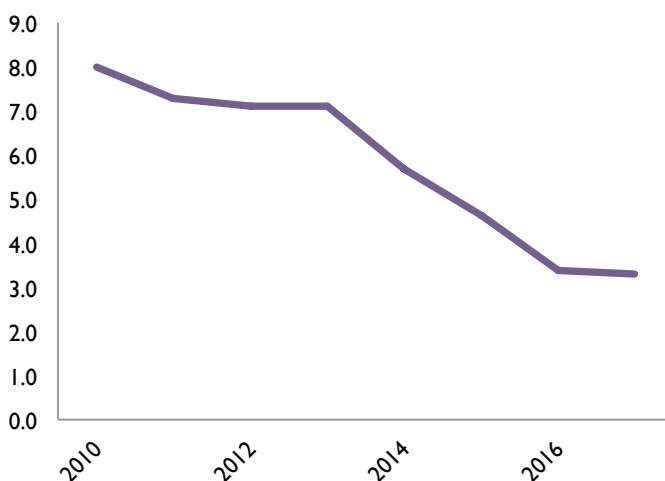
April



July



October



Unemployment rate: County comparison and ranking, 2010–2018

Source: Bureau of Labor Statistics

	2011	2013	2015	2017
Barnstable County	9.1	8.4	6.1	4.7
Berkshire County	7.8	7.4	5.4	4.3
Bristol County	9.4	8.7	6.1	4.7
Dukes County	9.4	9.1	6.5	4.9
Essex County	7.6	7	5	3.8
Franklin County	6.5	6.2	4.4	3.3
Hampden County	9.3	8.7	6.4	5
Hampshire County	6.2	6.1	4.5	3.4
Middlesex County	5.9	5.5	3.9	3
Nantucket County	8.6	7.3	5.4	4.4
Norfolk County	6.3	5.8	4.2	3.3
Plymouth County	7.8	7	5.1	3.9
Suffolk County	6.6	6.2	4.4	3.4
Worcester County	7.7	7.2	5.1	3.9

2018

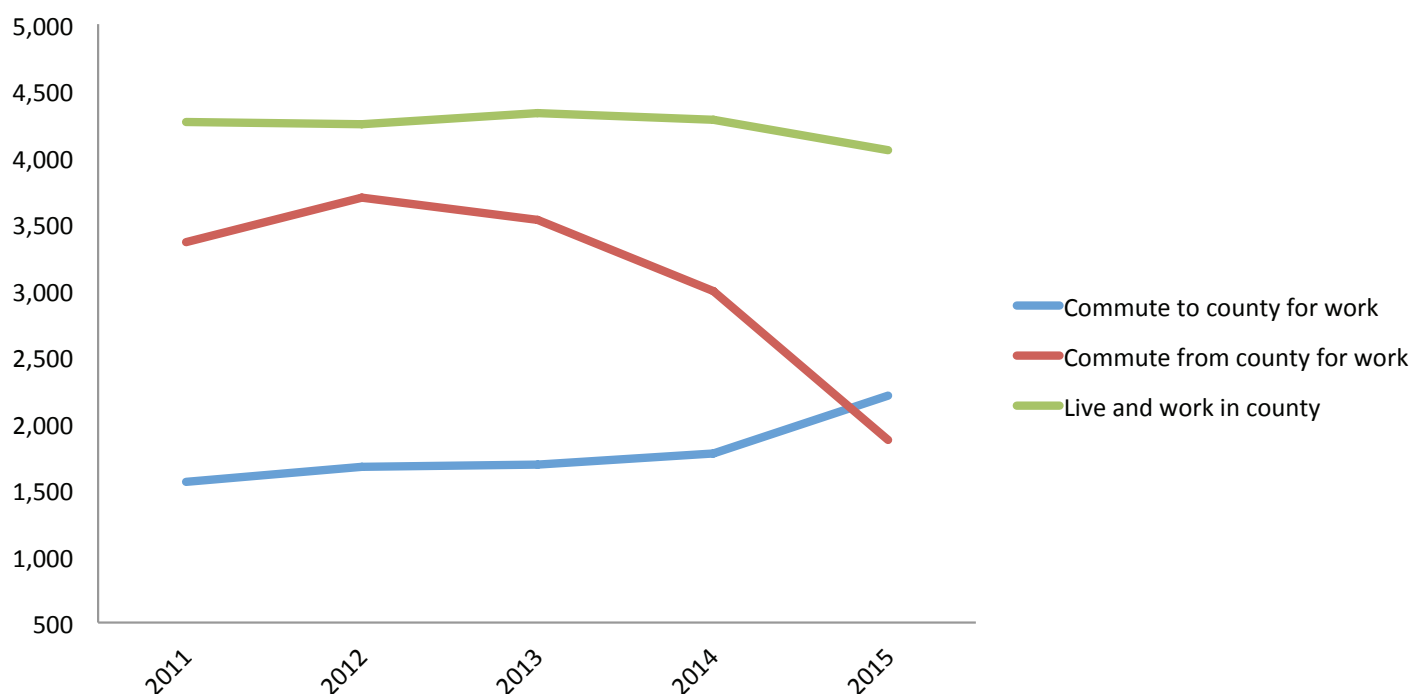
5	Hampden County
4.9	Dukes County
4.7	Barnstable County
4.7	Bristol County
4.4	Nantucket County
4.3	Berkshire County
3.9	Plymouth County
3.9	Worcester County
3.8	Essex County
3.4	Hampshire County
3.4	Suffolk County
3.3	Franklin County
3.3	Norfolk County
3	Middlesex County

Inflow and outflow of workers: County, 2011–2015

Source: OneTheMap (US Census Bureau, Center for Economic Studies)

According to OnTheMap, an online service maintained by the US Census Bureau, the number of workers commuting to Dukes County from elsewhere finally surpassed the number commuting from Dukes County in 2015.

The data for 2011–2015 show a 44-percent decline in the number of workers commuting from Dukes County, and a 41-percent increase in the number commuting to Dukes County for work. This may suggest a greater availability of jobs on the Vineyard, a growing desirability to work on the Vineyard, or other factors. At the same time, the number of people who simultaneously worked and lived in Dukes County declined by about five percent.



Median household and family income and benefits by town, 2010–2016

Source: American Community Survey 5-Year Estimates

In the U.S. Census, family income measures the income of all family members over the age of 15 living in the same residence, while household income applies to all family and non-family members living together. The median of those figures is the middle value, with half the incomes above and half below. Median incomes in Dukes County have been somewhat lower than in the state, although median family income (and per capita income) since 2015 have edged slightly ahead. However, it should also be noted that the margins of error may account at least partly for the variations seen here in median income over time.

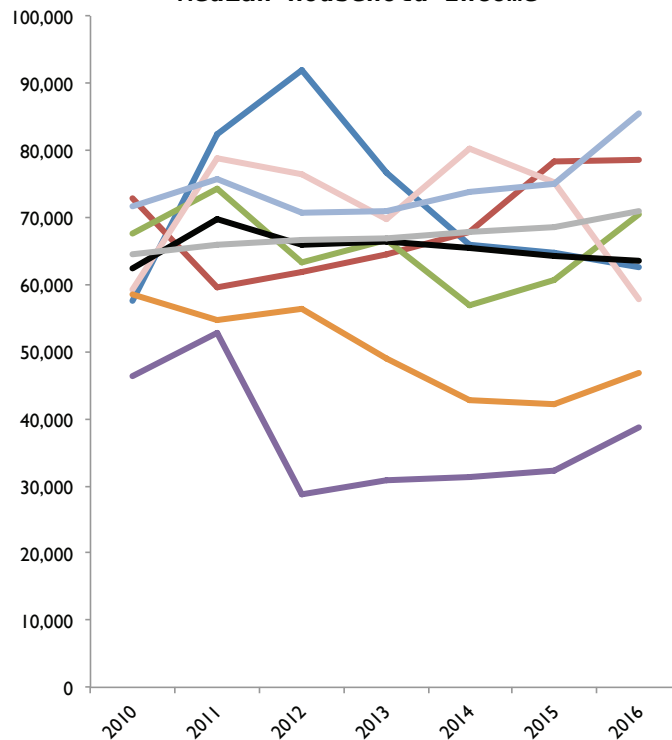
	2010	2012	2014	2016
Aquinnah	\$57,500	\$91,875	\$65,833	\$62,500
	\$83,750	\$109,688	\$69,750	\$64,609
Chilmark	\$72,917	\$61,818	\$67,813	\$78,542
	\$88,958	\$79,107	\$123,750	\$143,571
Edgartown	\$67,625	\$63,378	\$56,911	\$70,556
	\$79,219	\$70,563	\$70,938	\$82,422
Gosnold	\$46,250	\$28,750	\$31,406	\$38,750
	\$20,781	\$39,750	\$71,250	UA
Oak Bluffs	\$59,156	\$76,389	\$80,225	\$57,773
	\$75,025	\$90,489	\$95,254	\$96,714
Tisbury	\$58,551	\$56,477	\$42,727	\$46,816
	\$69,936	\$62,500	\$49,453	\$56,954
West Tisbury	\$71,667	\$70,646	\$73,843	\$85,469
	\$91,389	\$66,908	\$80,417	\$92,522
County	\$62,407	\$65,896	\$65,518	\$63,534
	\$77,231	\$79,195	\$84,315	\$92,514
State	\$64,509	\$66,658	\$67,846	\$70,954
	\$81,165	\$84,380	\$86,132	\$90,180

Median household income: ranking by town, 2010, 2016

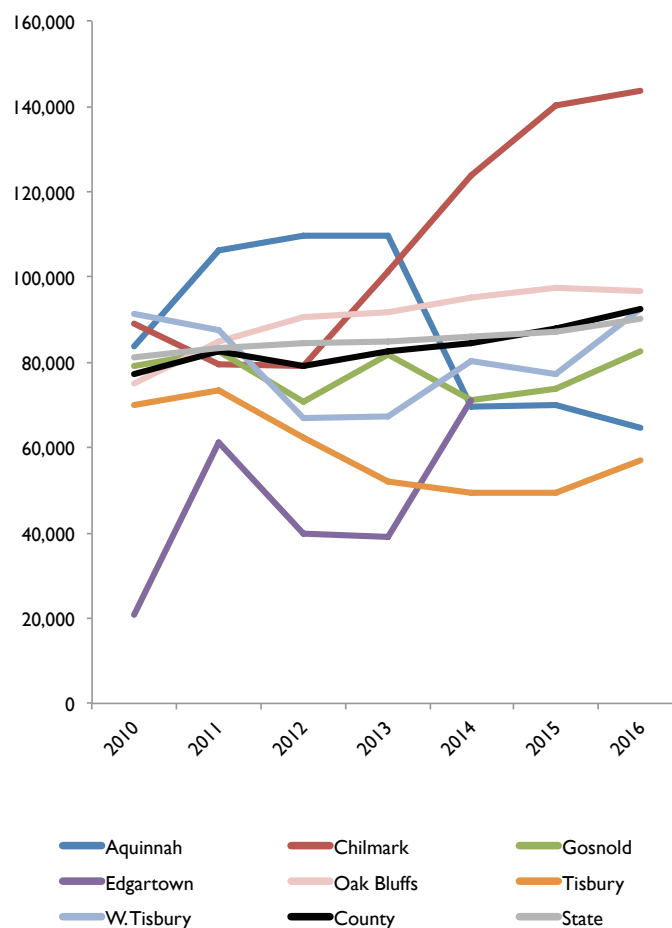
Source: American Community Survey 5-Year Estimates

2010		2016	
\$72,917	Chilmark	\$85,469	W.Tisbury
\$71,667	W.Tisbury	\$78,542	Chilmark
\$67,625	Edgartown	\$70,556	Edgartown
\$59,156	Oak Bluffs	\$62,500	Aquinnah
\$58,551	Tisbury	\$57,773	Oak Bluffs
\$57,500	Aquinnah	\$46,816	Tisbury
\$46,250	Gosnold	\$38,750	Gosnold

Median Household Income



Median Family Income



Income per capita (towns), 2010–2016

Source: American Community Survey 5-year estimates

	2010	2012	2014	2016
Aquinnah	\$31,233	\$39,154	\$33,399	\$31,128
Chilmark	\$49,133	\$52,839	\$44,681	\$48,087
Gosnold	\$30,349	\$26,151	\$31,071	\$64,762
Edgartown	\$37,147	\$35,455	\$38,713	\$45,627
Oak Bluffs	\$28,417	\$30,099	\$31,955	\$36,789
Tisbury	\$29,693	\$30,430	\$31,020	\$34,833
West Tisbury	\$36,254	\$31,906	\$29,642	\$43,073
County	\$33,390	\$33,125	\$33,738	\$40,051
State	\$33,966	\$35,485	\$36,441	\$38,069

Earnings: While income may come from many sources, including Social Security, child support and public assistance, earnings typically refer to wages and salary.

Income inequality (Gini index) by town, 2010–2016

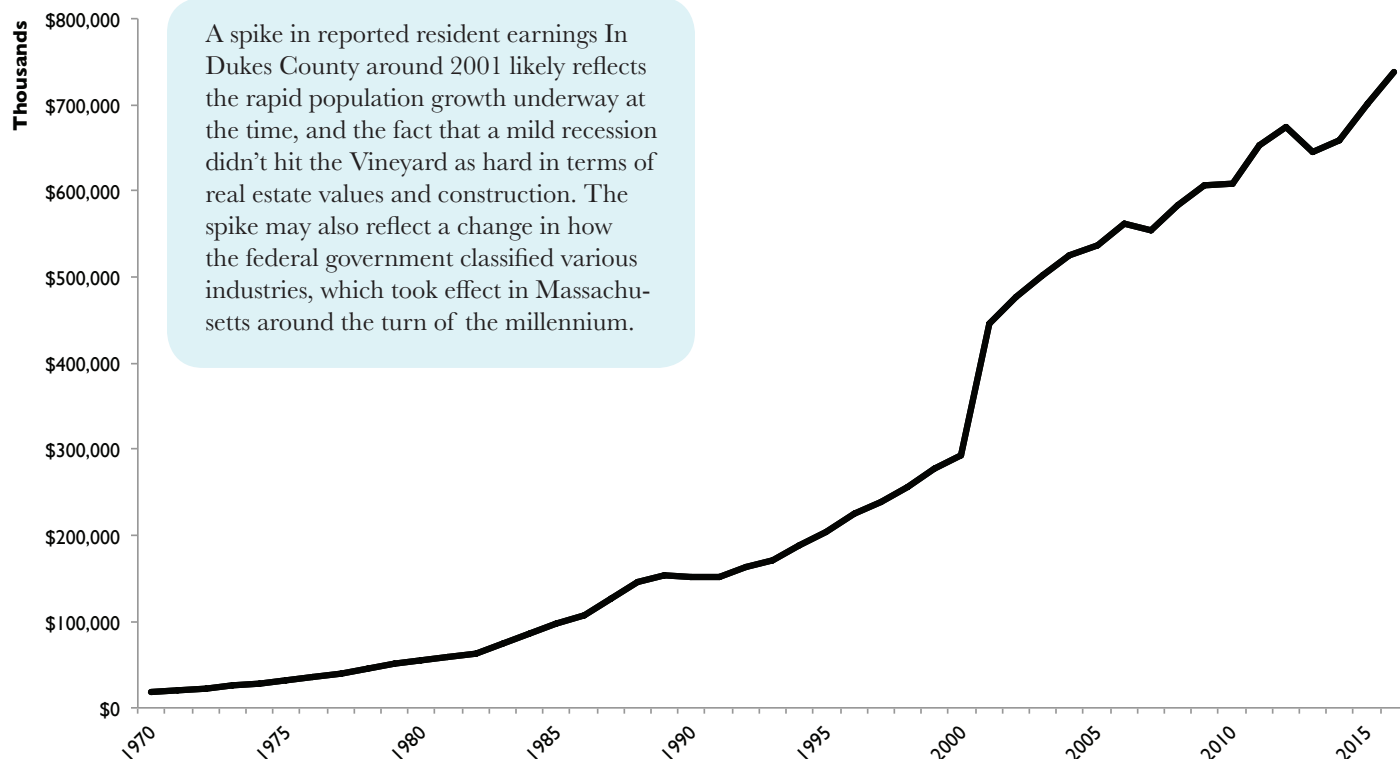
Source: American Community Survey 5-Year Estimates

The Gini index, named for the statistician Corrado Gini, is a measure of income inequality. The values range from 0 to 1, where 0 equals perfect equality (everyone has the same income) and 1 equals perfect inequality (all the income goes to a single person or group). In 2016, all towns in Dukes County except Oak Bluffs and West Tisbury exceeded the state and national index values.

	2010	2012	2014	2016
Aquinnah	0.48	0.44	0.45	0.52
Chilmark	0.58	0.63	0.56	0.59
Edgartown	0.47	0.5	0.55	0.59
Gosnold	0.4	0.39	0.42	0.55
Oak Bluffs	0.44	0.38	0.39	0.46
Tisbury	0.43	0.47	0.49	0.53
West Tisbury	0.41	0.34	0.31	0.41
Dukes County	0.46	0.46	0.47	0.52
Massachusetts	0.47	0.47	0.48	0.48
United States	0.47	0.47	0.48	0.48

Net resident earnings: County, 1970–2016

Source: Bureau of Economic Analysis

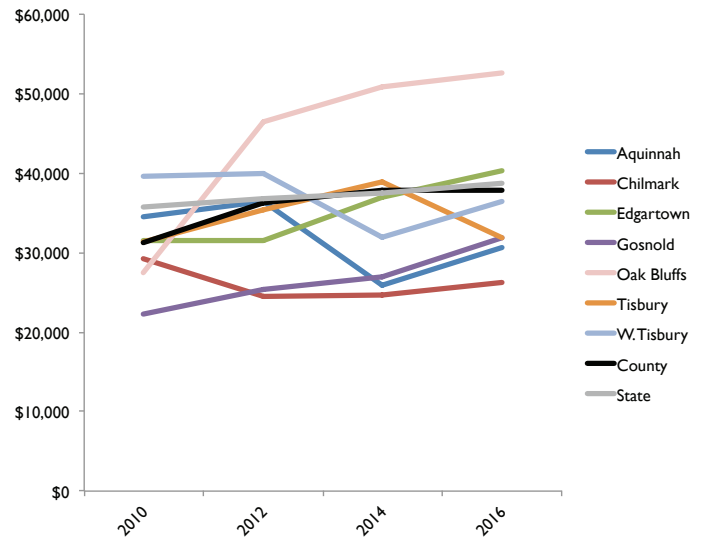


Median earnings in last 12 months by town, 2010–2016*

Source: American Community Survey 5-year estimates

	2010	2012	2014	2016
Aquinnah	\$34,567	\$36,438	\$25,875	\$30,722
Chilmark	\$29,300	\$24,444	\$24,625	\$26,167
Edgartown	\$31,466	\$31,509	\$36,889	\$40,252
Gosnold	\$22,273	\$25,395	\$26,875	\$31,857
Oak Bluffs	\$27,436	\$46,489	\$50,777	\$52,554
Tisbury	\$31,315	\$35,373	\$38,942	\$31,807
W.Tisbury	\$39,570	\$39,886	\$31,939	\$36,526
County	\$31,262	\$36,253	\$37,857	\$37,827
State	\$35,703	\$36,793	\$37,436	\$38,792

* Population 16 and over with earnings



Median earnings by gender: County, 2016

Source: American Community Survey 5-Year Estimates

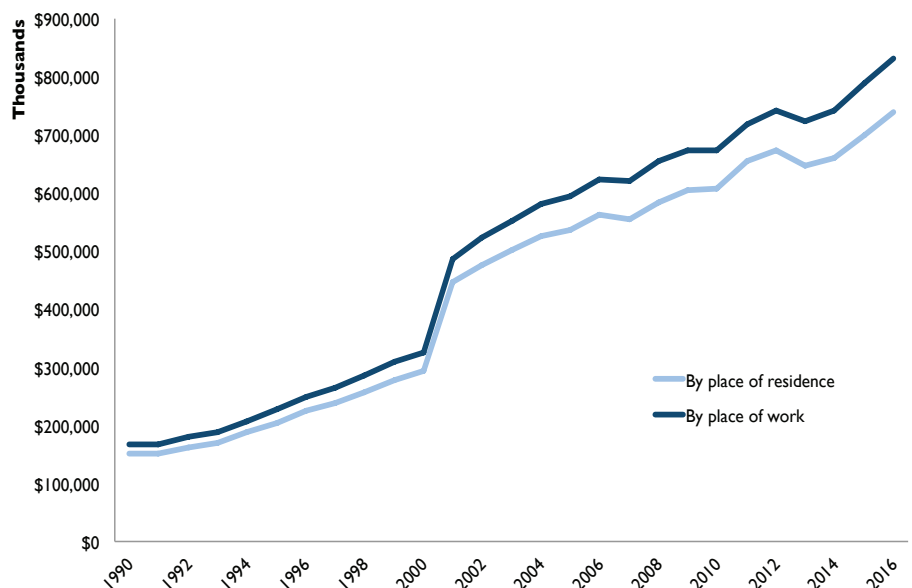
Earnings often reveal major differences according to gender. As a whole, the difference in Dukes County was less than nationwide, with women earning about 83 cents for every dollar earned by a man in 2016. However, women with a high school, bachelor's or graduate degree still earned about 25 percent less than their male counterparts.

	Men	Women	Difference	Difference in state
Population 25 and over with earnings	\$44,500	\$36,908	-17%	-26%
Less than high school graduate	\$30,917	\$40,951	32%	-32%
High school graduate (includes equivalency)	\$41,310	\$27,775	-33%	-32%
Some college or associate's degree	\$41,840	\$38,494	-8%	-30%
Bachelor's degree	\$44,844	\$36,087	-20%	-31%
Graduate of professional degree	\$77,759	\$57,545	-26%	-31%

Net earnings by place of residence: County, 1990–2016

Source: Bureau of Economic Analysis

Among workers commuting either to or from Dukes County for their jobs, those commuting from elsewhere account for more earnings, leading to a net outflow of earnings among commuters. The difference between the inflow and outflow is called the adjustment for residence, which the Bureau of Economic Analysis uses to calculate net earnings by place of residence. (The calculation subtracts contributions for government insurance.) In Dukes County, the outflow of earnings has outpaced the inflow since the 1990s. This trend corresponds to the inflow and outflow of workers on page 22.



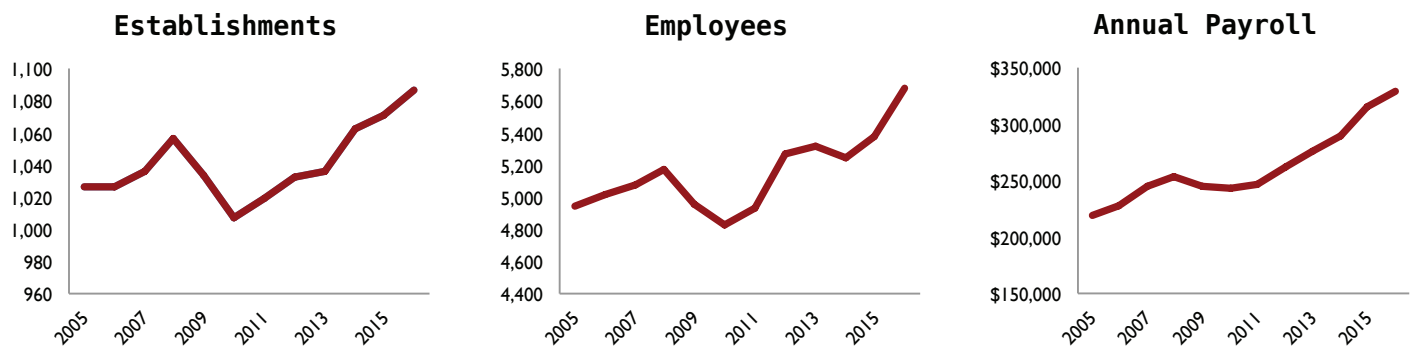
Industries and establishments: The 2008 Recession took a toll on industries, establishments and payroll in Dukes County, but all three measures have grown considerably since 2010. Total wages, as measured by the state Executive Office of Labor and Workforce Development, dipped somewhat less than average monthly employment, which may indicate that it was largely lower-paying work that declined during the recession. At the same time, the American Community Survey, which measures employment numbers in March, revealed a sharper decline in employment, suggesting that the recession had a greater affect in the off-season.

Establishments, employees, payroll by industry: County, 2006–2016*

Source: American Community Survey 5-Year Estimates

	Establishments	Employees	Annual payroll
2006	1,026	5,011	\$227,820
2008	1,056	5,172	\$253,314
2010	1,007	4,827	\$242,551
2012	1,033	5,271	\$262,571
2014	1,062	5,239	\$288,767
2016	1,087	5,679	\$329,705

* Payroll in thousands; includes full and part-time employees.



Industry rankings (civilian employed population 16 and over): County, 2016

Source: American Community Survey 5-Year Estimates

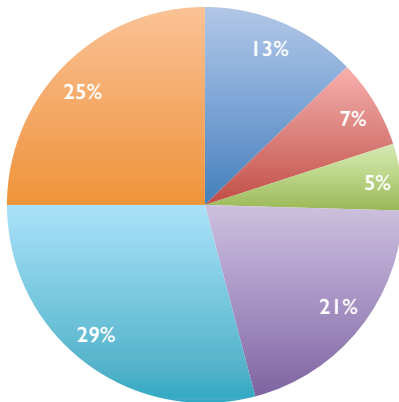
1,579	Educational services; and health care and social assistance
1,214	Construction
1,070	Professional, scientific, and management; and administrative and waste management services
1,025	Arts, entertainment, and recreation; and accommodation and food services
920	Retail trade
798	Finance and insurance; and real estate and rental and leasing
444	Other services, except public administration
388	Public administration
370	Manufacturing
247	Transportation and warehousing, and utilities
221	Information
213	Agriculture, forestry, fishing and hunting, and mining
149	Wholesale trade

Top six industries by town (percent employed), 2016

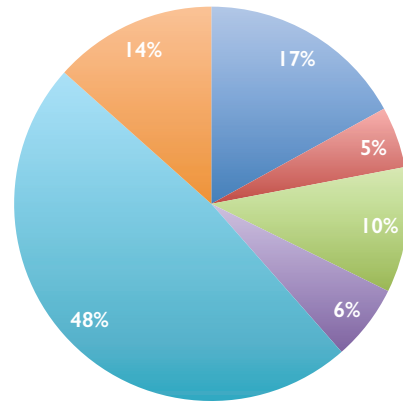
Source: American Community Survey 5-Year Estimates

- Construction
- Retail trade
- Finance and insurance, and real estate and rental and leasing
- Professional, scientific, and management, and administrative and waste management services
- Educational services, and health care and social assistance
- Arts, entertainment, and recreation, and accommodation and food services

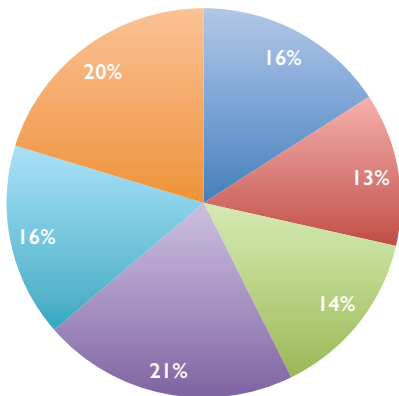
Aquinnah



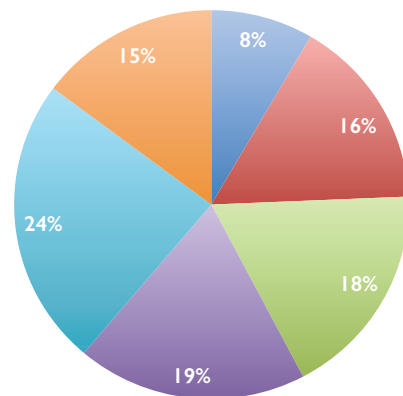
Chilmark



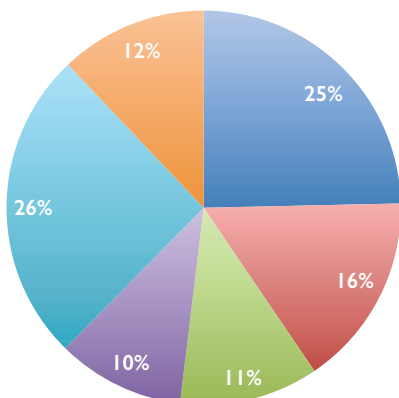
Edgartown



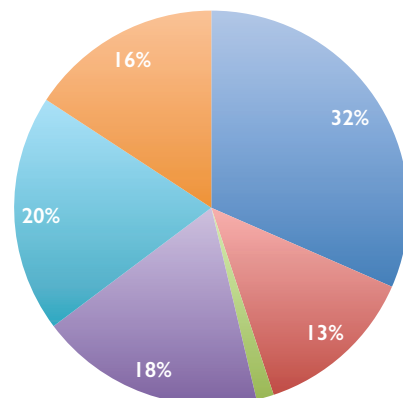
Oak Bluffs



Tisbury



West Tisbury



ECONOMY: Selected Industries

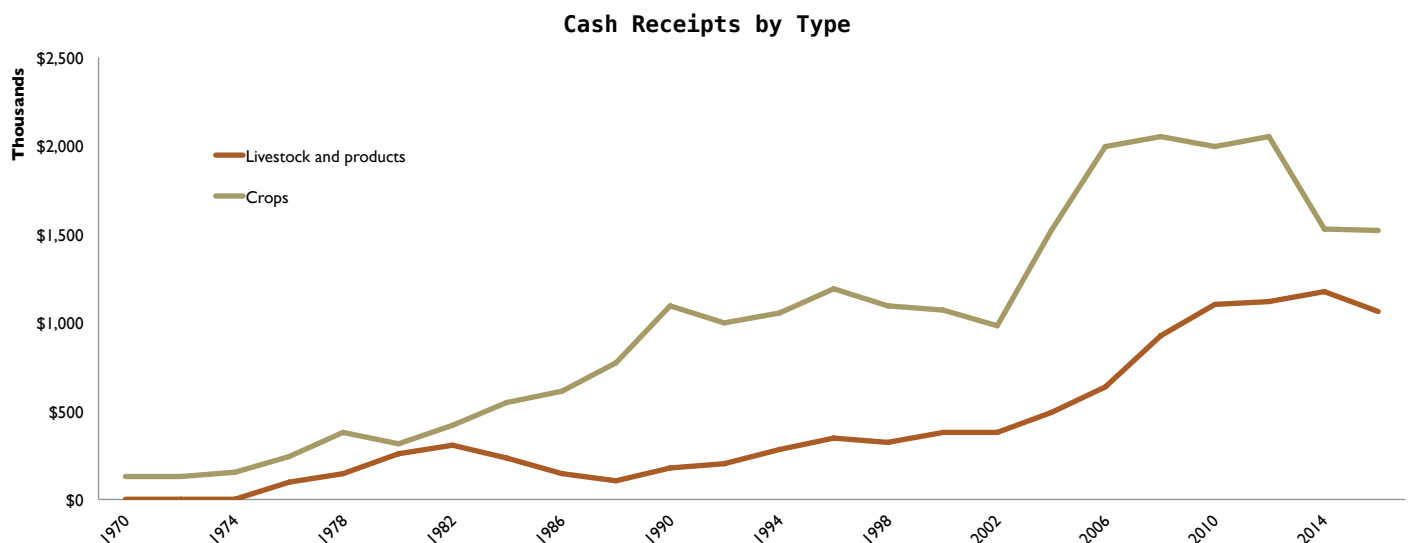
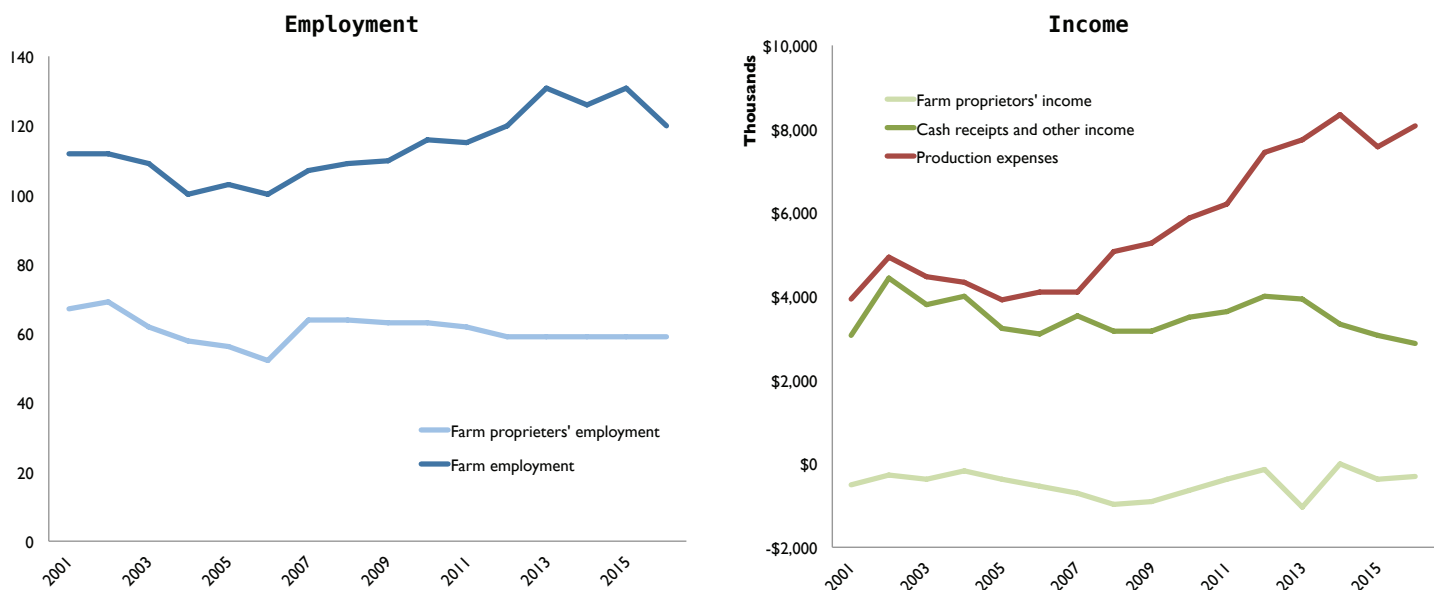
This section highlights some of the industries that have particular economic, cultural or social importance to Dukes County. The numbers here do not capture the influence of under-the-table business activity, although publicly available data in many cases indicate wages and employment on the rise since 2010.

Agriculture

Farm employment (full- and part-time), income and expenses: County, 2001–2016

Source: Bureau of Economic Analysis

Farm income and profitability can be hard to pin down, in part because bookkeeping may differ among farms, and not every farm on the Vineyard is necessarily out to make a profit (though most are). It's possible, for example, that profit itself may sometimes be counted as a production expense, if it all goes into wages, and the result on paper may be an overall loss. In other words, the data here may reflect the reality on paper but not in people's pockets.



Blue Economy

The following figures are taken from the 2017 Cape Cod Blue Economy Project Implementation Plan, which profiles the economic impact of businesses that rely upon the water. The plan defines “dark blue” businesses as those that rely directly on the water, and “medium blue” as those that dark blue rely upon, or that depend indirectly on the water. Businesses were classified based primarily on the North American Industry Classification System.

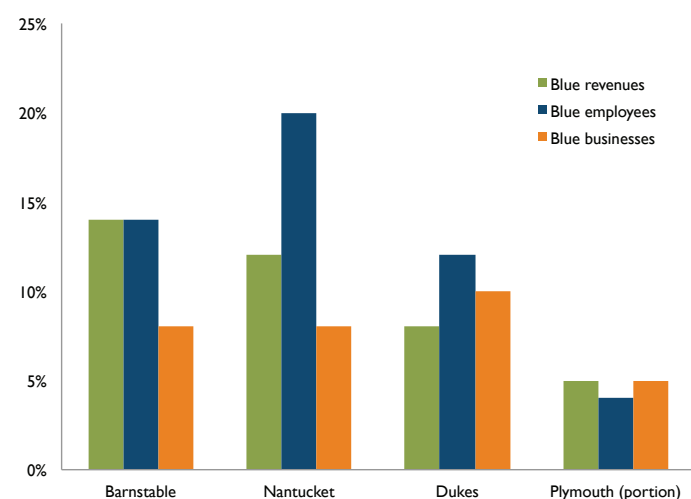
Blue revenue, businesses, employees: County comparison, 2016

Source: Cape Cod Blue Economy Project Implementation Plan

	Total revenue	Blue revenue	Total businesses	Blue businesses	Total employees	Blue employees
Barnstable County	\$8,205,860,852	\$1,141,310,553	17,207	1,383	117,564	15,983
Nantucket County	\$572,511,171	\$66,604,412	1,552	129	8,000	1,609
Dukes County	\$911,673,462	\$68,708,702	1,569	150	9,482	1,160
Plymouth County (portion)	\$3,168,546,980	\$154,642,789	4,092	210	40,853	1,778

Blue economy as percent of total revenues, employees, businesses: County comparison, 2016

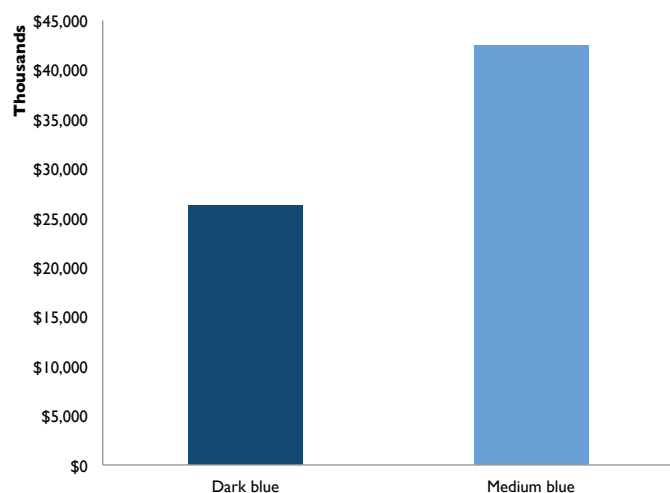
Source: Cape Cod Blue Economy Project Implementation Plan



Dark blue as % of total:	Barnstable	Dukes	Nantucket	Plymouth (subset)
Revenues	8	3	6	2
Employees	5	3	2	1
Businesses	2	3	2	1
Medium blue as % of total:				
Revenues	6	5	6	3
Employees	8	10	18	4
Businesses	6	6	6	3

Dark and medium blue revenues: County, 2016

Source: Cape Cod Blue Economy Project Implementation Plan



Regional Snapshot: Cape and Islands

Dark blue:

576 businesses
\$797,716,144 in gross revenues
6,955 employees

Medium blue:

1,296 businesses
\$366,550,312 in gross revenues
13,575 employees

Construction

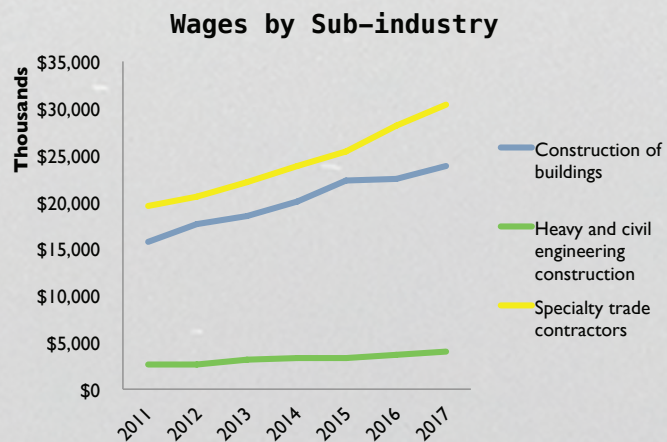
Wages and average monthly employment: County, 2005–2017

Source: Executive Office of Labor and Workforce Development

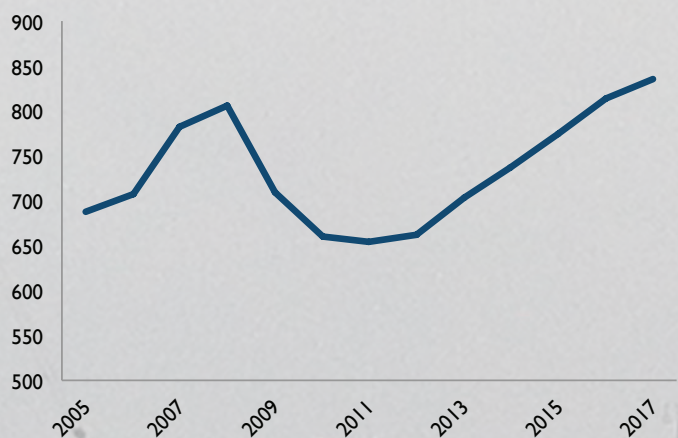


Wages by sub-industry: County, 2012–2016

Source: Executive Office of Labor and Workforce Development

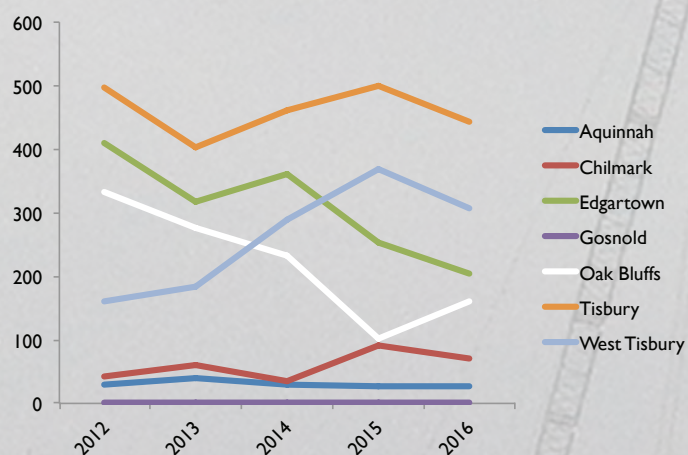


Average Monthly Employment



Construction workers by town 2012–2016

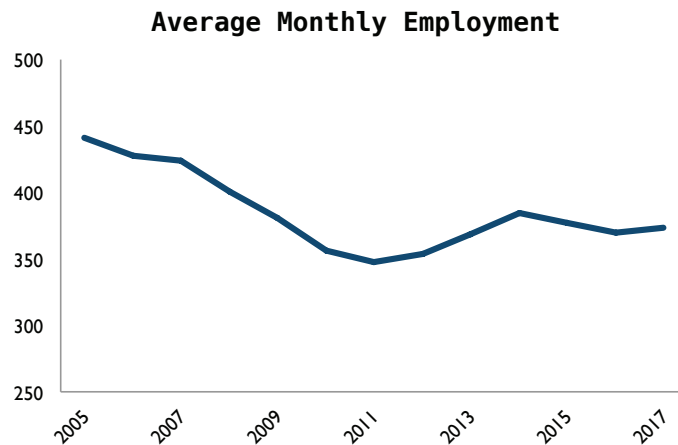
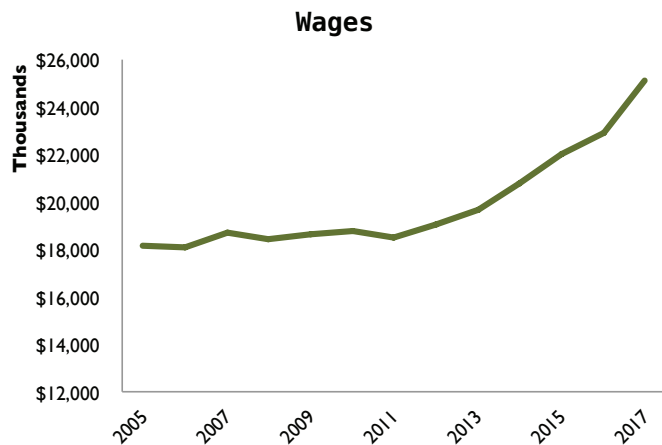
Source: American Community Survey 5-Year Estimates



Finance and Real Estate

Wages and average monthly employment: County, 2005–2017

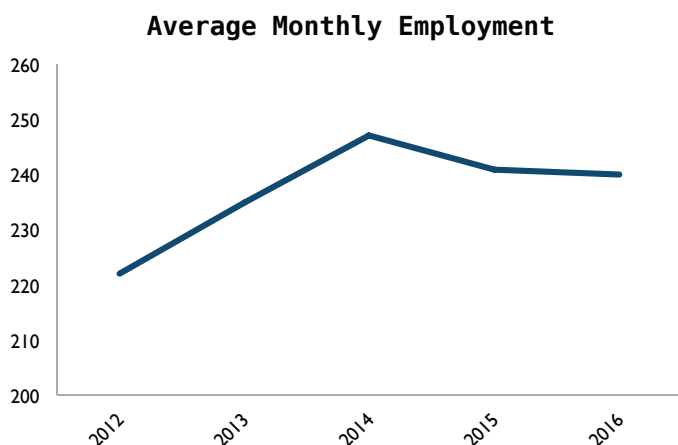
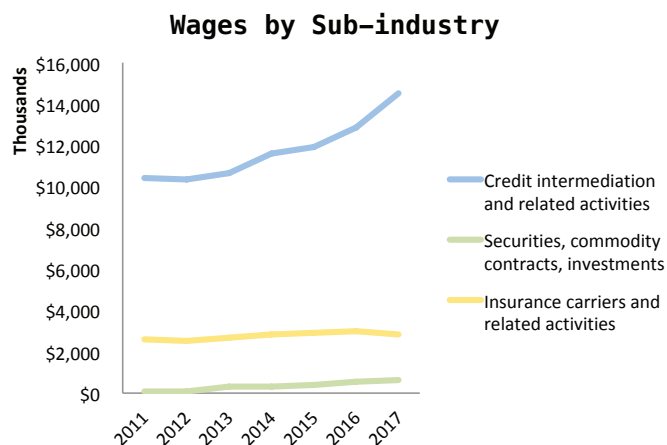
Source: Executive Office of Labor and Workforce Development



Finance and insurance

Wages by sub-industry; average monthly employment: County, 2011–2017

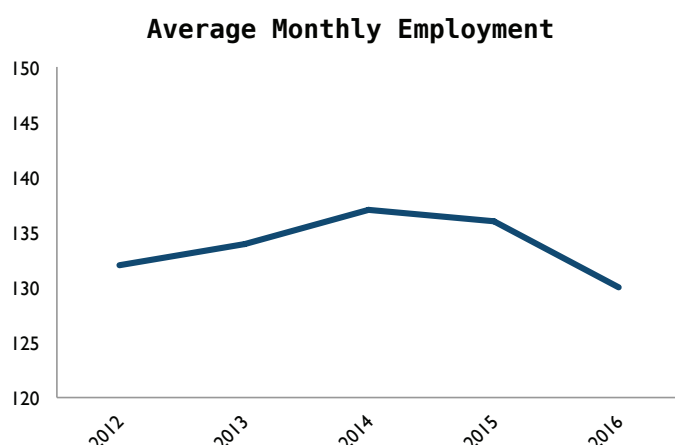
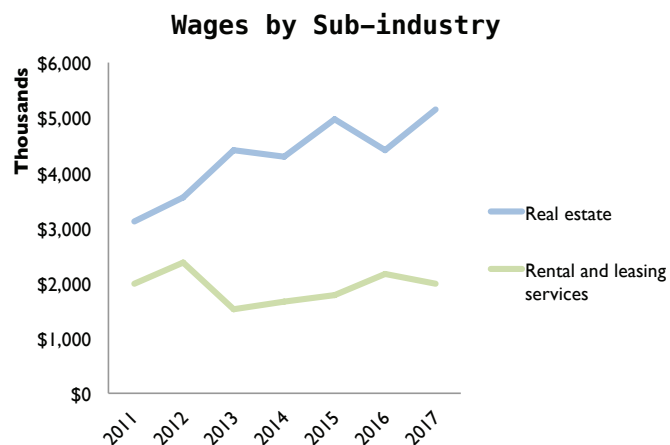
Source: Executive Office of Labor and Workforce Development



Real estate and rental leasing

Wages by sub-industry; average monthly employment: County, 2011–2017

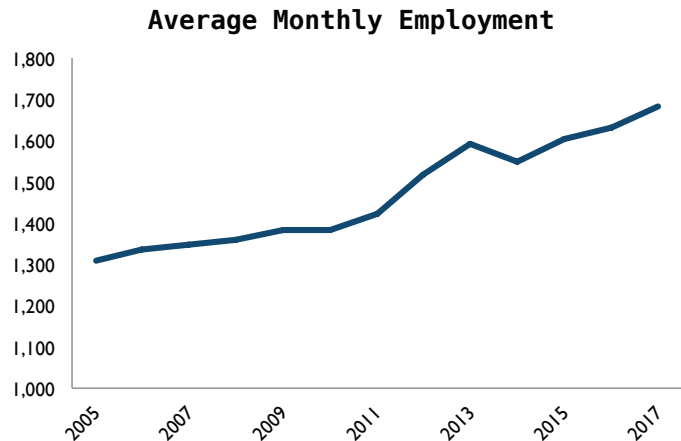
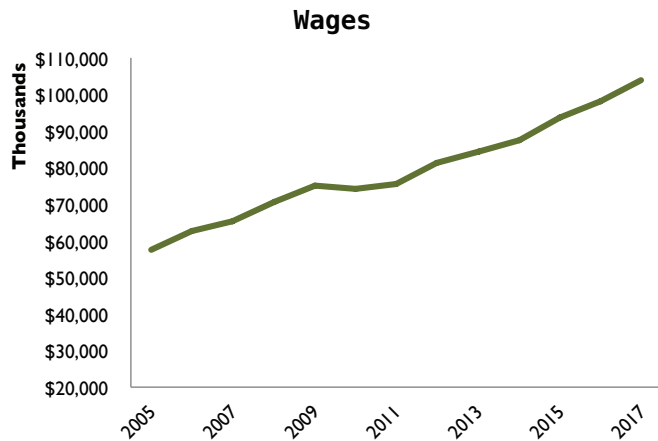
Source: Executive Office of Labor and Workforce Development



Health and Education

Wages and average monthly employment: County, 2005–2017

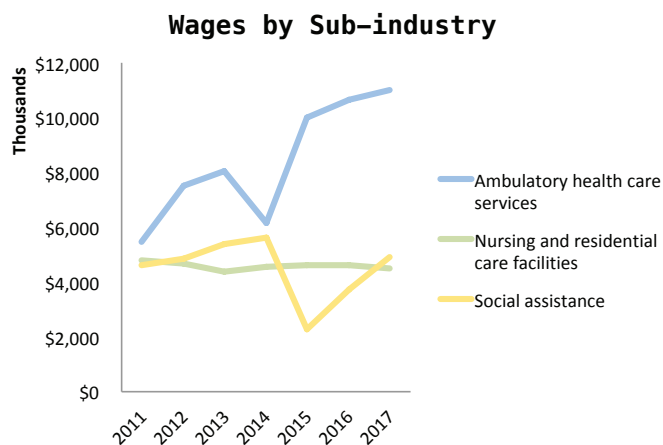
Source: Executive Office of Labor and Workforce Development



Health care and social assistance

Wages by sub-industry; average monthly employment: County, 2011–2017

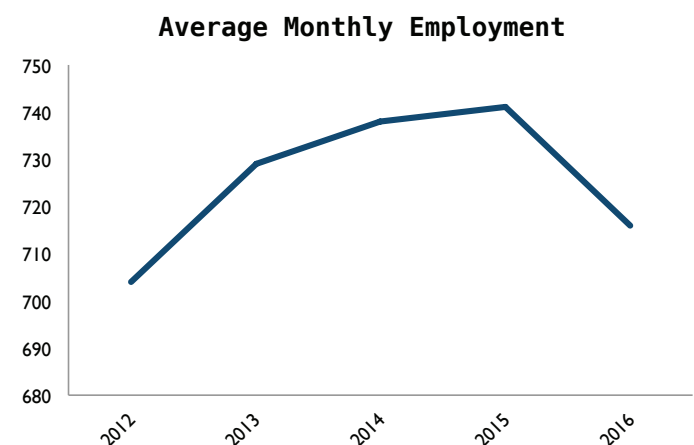
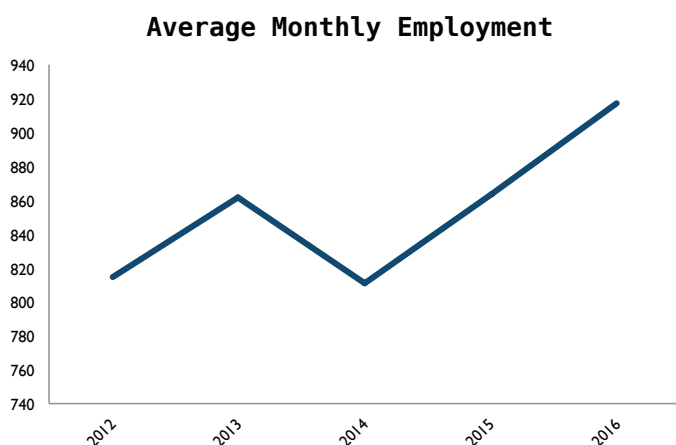
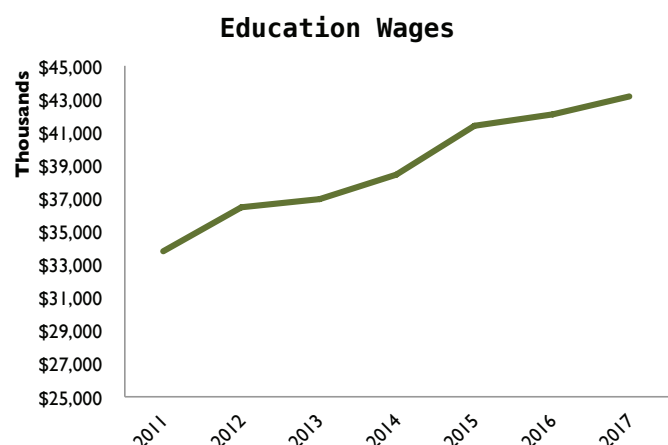
Source: Executive Office of Labor and Workforce Development



Education

Wages by sub-industry; average monthly employment: County, 2011–2017

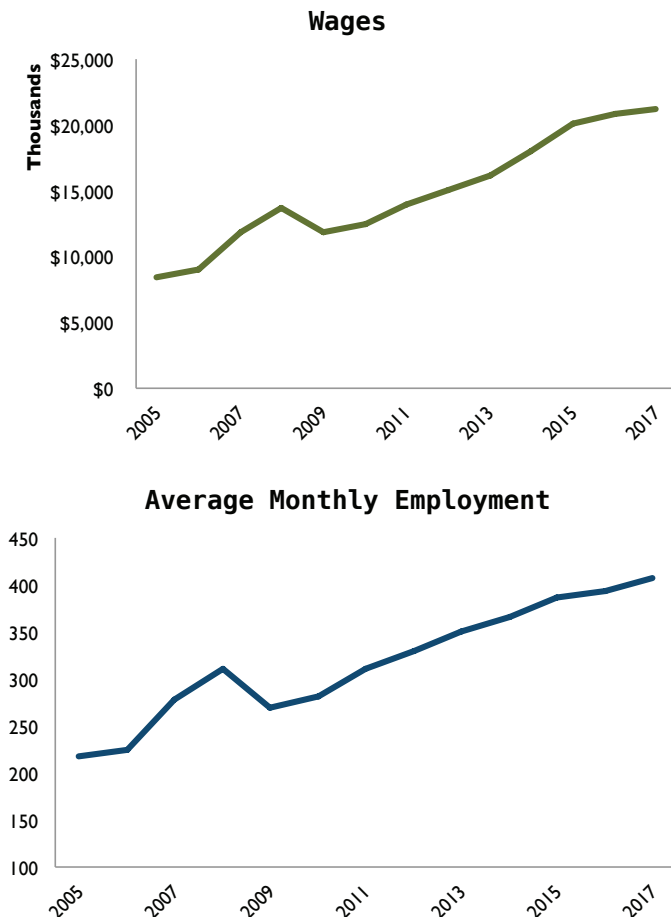
Source: Executive Office of Labor and Workforce Development



Landscaping (services to buildings and dwellings)

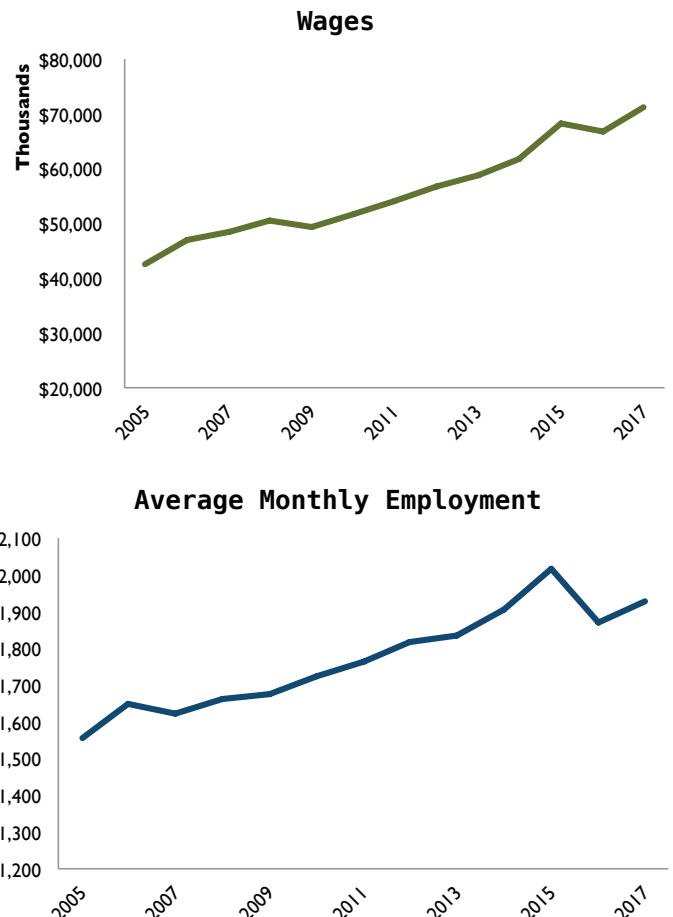
Wages and average monthly employment: County, 2005–2017

Source: Executive Office of Labor and Workforce Development



Leisure and hospitality

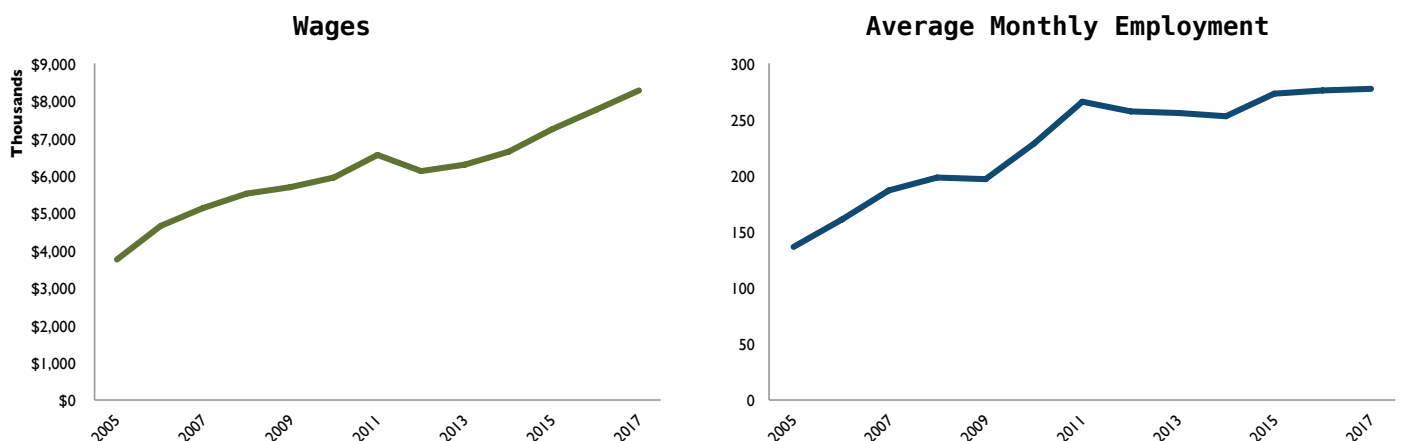
Wages and average monthly employment County, 2005–2017 Source: Executive Office of Labor and Workforce Development



Membership associations and organizations (See also Nonprofits, page 41)

Wages and average monthly employment: County, 2005–2017

Source: Executive Office of Labor and Workforce Development

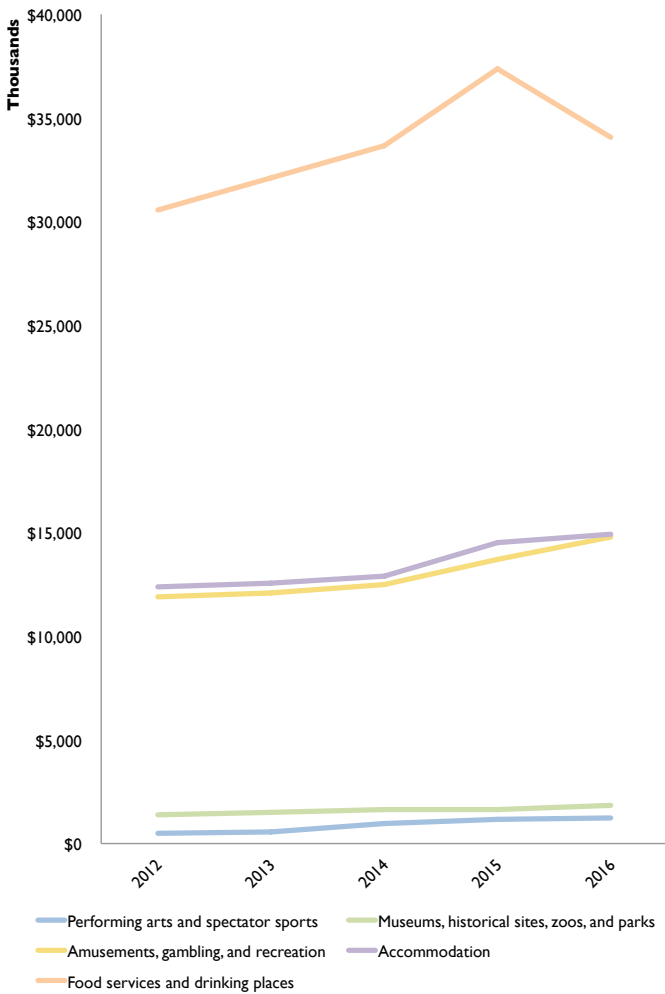


Continued from page 33 . . .

(Leisure)

Wages by sub-industry: County, 2012–2016

Source: Executive Office of Labor and Workforce Development



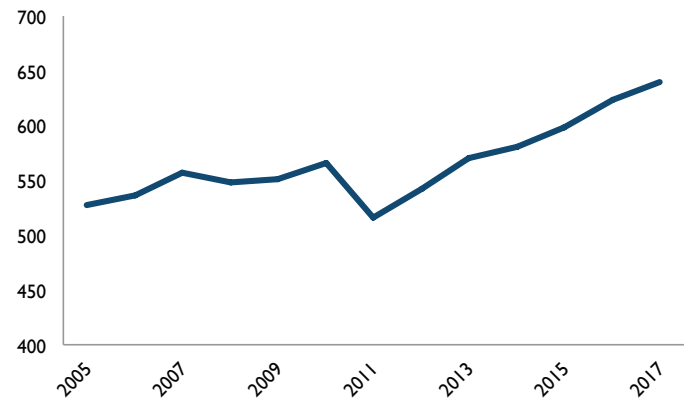
Public administration

Wages and average monthly employment: County, 2005–2017

Source: Executive Office of Labor and Workforce Development

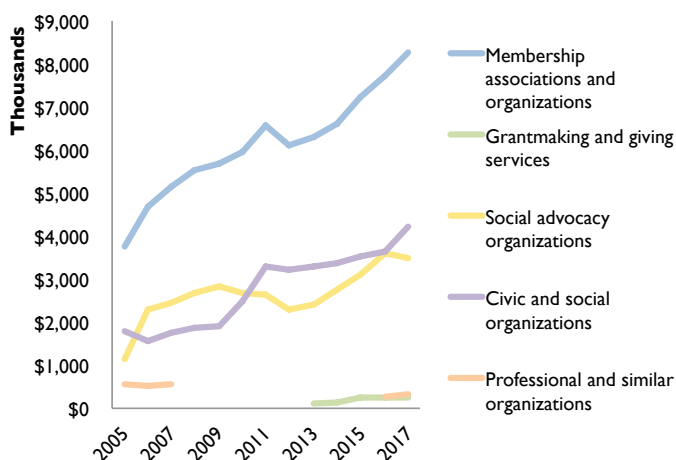


Average Monthly Employment



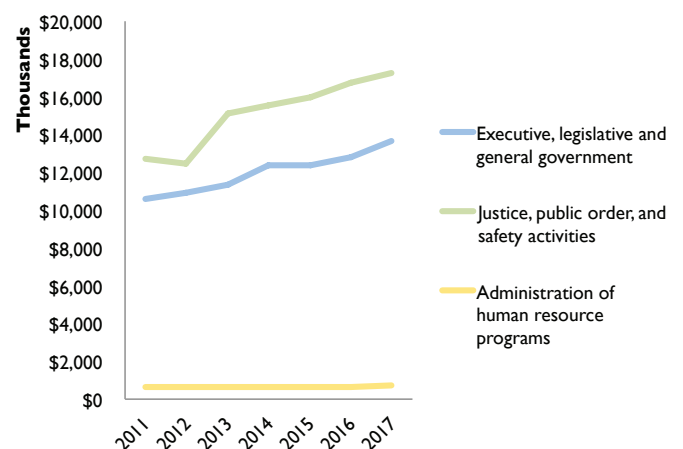
Wages by sub-industry: County, 2005–2017

Source: Executive Office of Labor and Workforce Development



Wages by sub-industry: County, 2012–2017

Source: Executive Office of Labor and Workforce Development



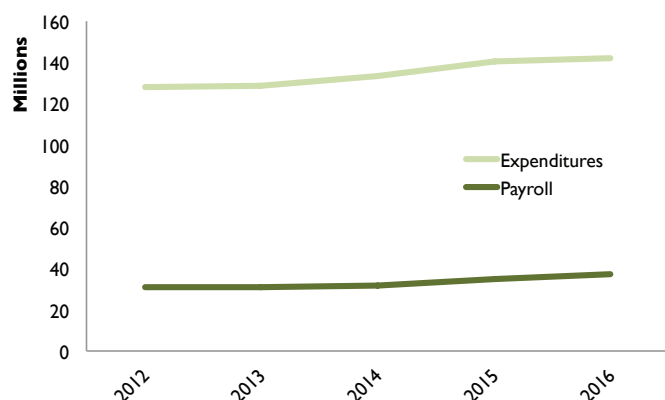
Tourism

Because of its small size and population, Dukes County has a limited overall impact on state tourism compared to other counties, when it comes to expenditures, travel-generated tax receipts and employment. But on a per-capita basis, it ranks third in the state for domestic travel expenditures (money spent by travelers in the county), and second for both state tax receipts and employment. Those factors underscore the important role that tourism has long played in the region.

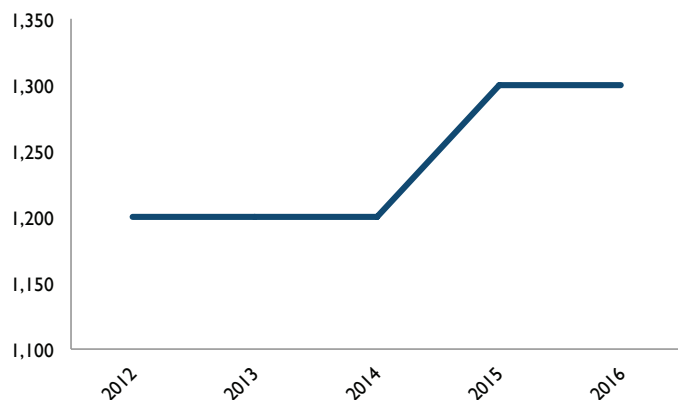
Domestic travel expenditures, payroll, tax receipts: County, 2012–2016

Source: Massachusetts Office of Travel and Tourism

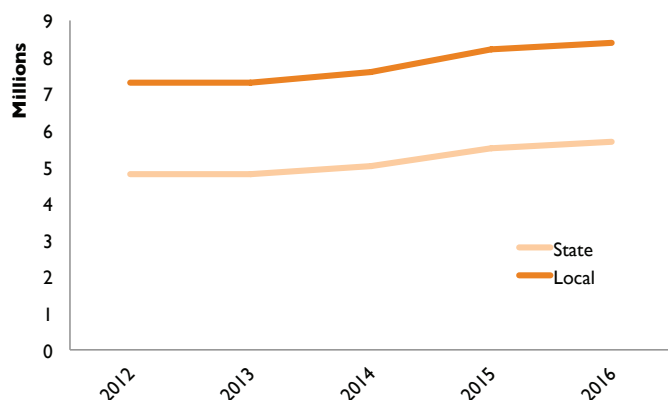
Expenditures and Payroll



Employment



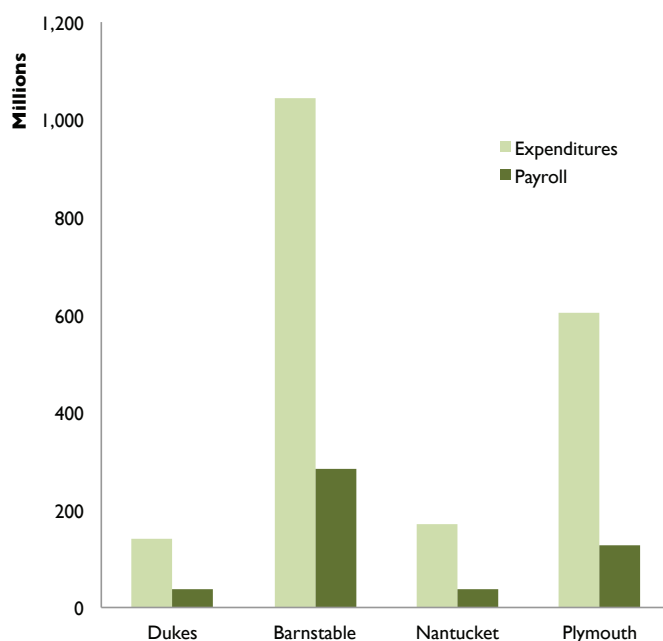
State and Local Tax Revenue



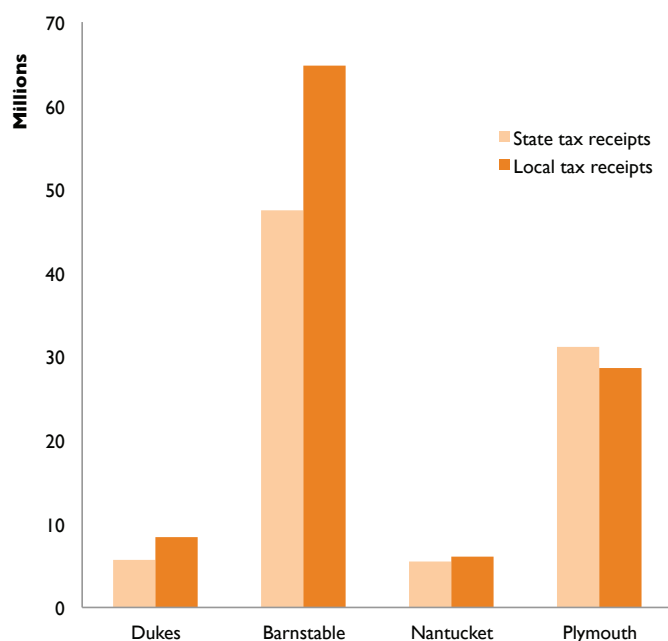
Domestic travel expenditures and payroll, tax receipts, employment; employment rate: County comparison, 2016

Source: Massachusetts Office of Travel and Tourism

Expenditures and Payroll

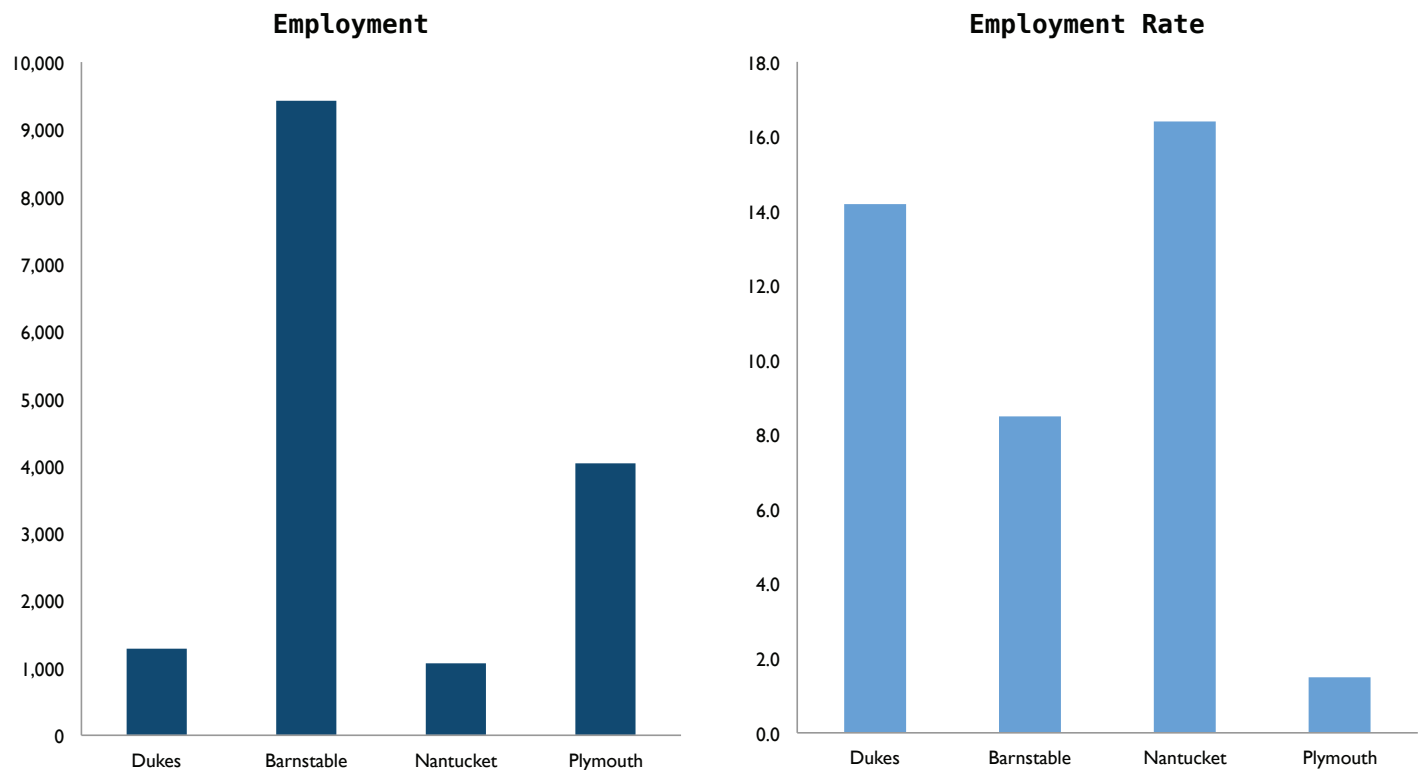


Tax Receipts



Continued from page 35 . . .

Domestic travel-generated employment and employment rate:* County comparison, 2016
Source: Massachusetts Office of Travel and Tourism; American Community Survey 5-Year Estimates



* Rate based on civilian workforce in 2016 (American Community Survey).

Domestic travel expenditures, state taxes, employees, payroll (percent of state total):
County comparison, 2016

Source: Massachusetts Office of Travel and Tourism; American Community Survey 5-Year Estimates (population)

Percent of expenditures		Expenditures per capita		Percent of state tax receipts		State tax receipts per capita	
Suffolk	49.27	Nantucket	\$15,384.27	Suffolk	33.06	Nantucket	\$495.09
Middlesex	14.58	Suffolk	\$11,249.39	Middlesex	20.62	Dukes	\$332.25
Norfolk	6.29	Dukes	\$8,244.23	Norfolk	8.62	Suffolk	\$311.81
Barnstable	5.83	Barnstable	\$4,873.14	Essex	6.8	Barnstable	\$221.19
Essex	5.02	Berkshire	\$3,315.29	Worcester	6.68	Bristol	\$213.79
Worcester	4.92	Middlesex	\$1,642.19	Barnstable	6.41	Berkshire	\$173.83
Plymouth	3.38	Norfolk	\$1,615.79	Plymouth	4.21	Middlesex	\$95.95
Hampden	2.81	Plymouth	\$1,177.75	Hampden	3.96	Norfolk	\$91.45
Bristol	2.73	Essex	\$1,153.89	Bristol	3.67	Essex	\$64.54
Berkshire	2.35	Worcester	\$1,075.69	Berkshire	2.98	Hampden	\$62.59
Nantucket	0.95	Hampden	\$1,072.63	Hampshire	1.01	Plymouth	\$60.69
Dukes	0.79	Bristol	\$875.69	Dukes	0.77	Worcester	\$60.3
Hampshire	0.74	Franklin	\$854.05	Nantucket	0.74	Franklin	\$49.73
Franklin	0.34	Hampshire	\$817	Franklin	0.47	Hampshire	\$46.23

Commercial fishing (see also shellfish bushels by town and type, page 79)

While employment and wage statistics were not available for the commercial fishing industry, the following data show the reported value of fish, shellfish and invertebrates landed in Dukes County by year and species.

Value of finfish, groundfish and invertebrate landings in Dukes County, 2006–2016

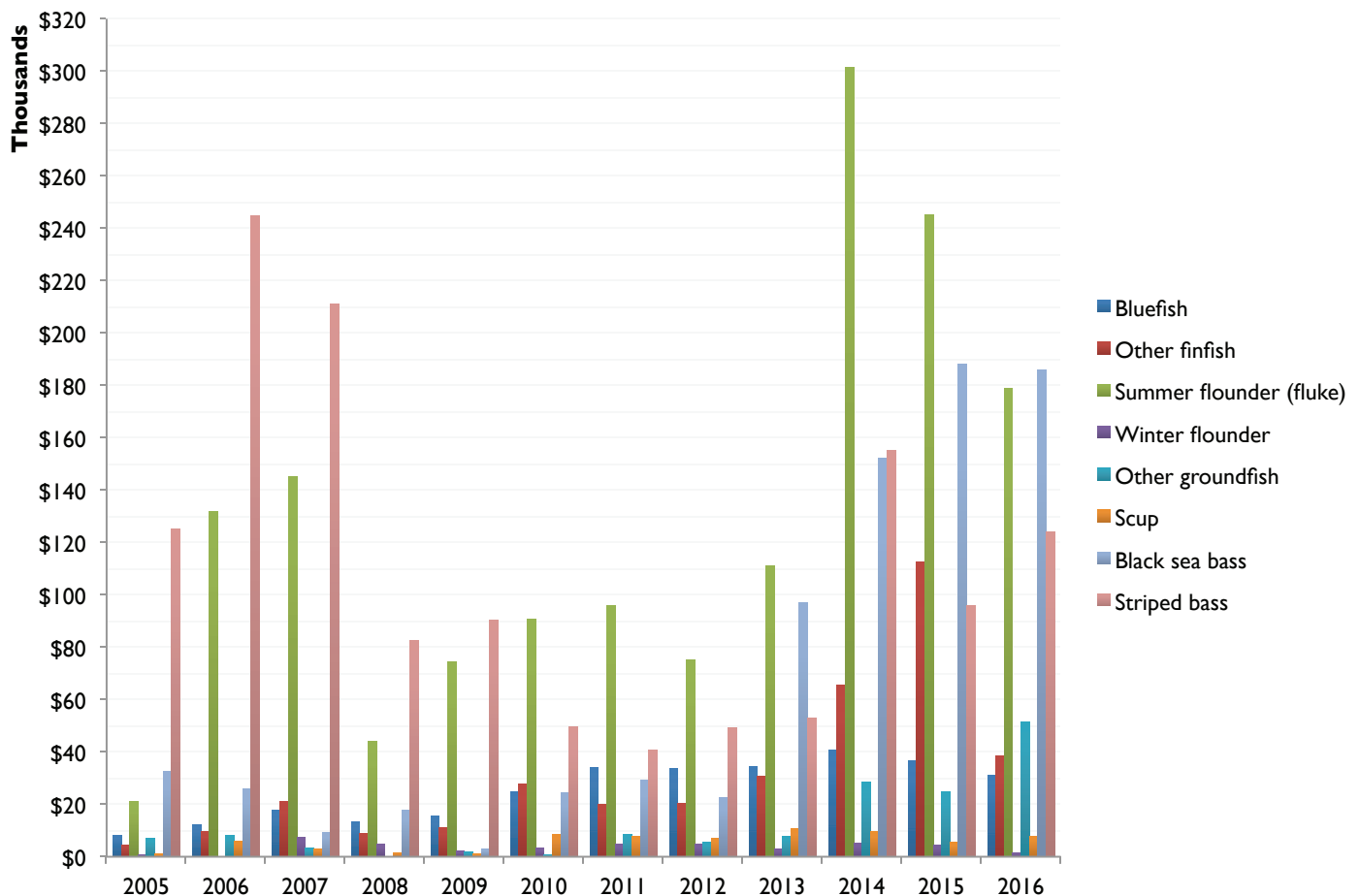
Source: Standard Atlantic Fisheries Information System (SAFIS) Dealer Database; provided by the Division of Marine Fisheries

See landings per year and list of other species: Appendix, page 116

	2006	2008	2010	2012	2014	2016
Bluefish	\$12,111	\$13,349	\$24,748	\$33,640	\$40,835	\$30,953
Other finfish	\$9,673	\$8,877	\$27,657	\$20,256	\$65,387	\$38,492
Summer flounder (fluke)	\$131,967	\$44,167	\$90,699	\$75,029	\$301,265	\$178,806
Winter flounder	*	\$4,649	\$3,319	\$4,744	\$5,128	\$1,576
Other groundfish	\$8,212	*	\$773	\$5,408	\$28,615	\$51,378
American lobster	\$445,777	\$723,650	\$485,912	\$558,393	\$521,454	\$754,593
Other invertebrates	\$30,920	\$3,187	\$7,177	\$45,171	\$53,217	\$72,829
Scup	\$6,076	\$1,661	\$8,616	\$7,123	\$9,486	\$7,786
Black sea bass	\$26,100	\$17,638	\$24,571	\$22,633	\$152,303	\$185,900
Striped bass	\$244,943	\$82,518	\$49,706	\$49,443	\$155,252	\$123,986

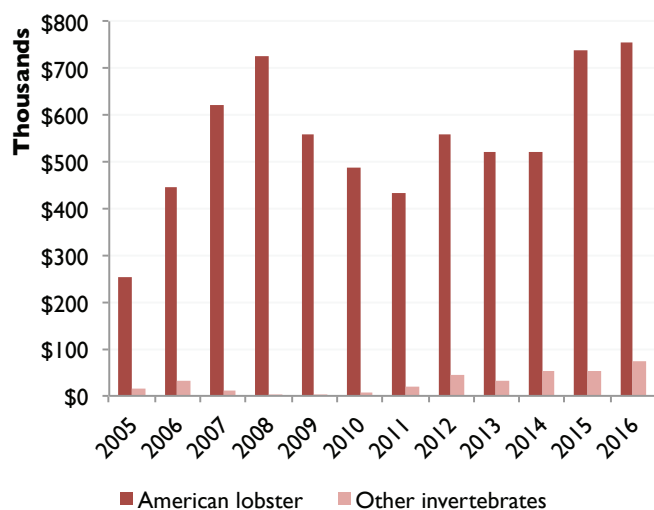
*Withheld

Finfish and Groundfish Value



Continued from page 37 . . .

Invertebrate Value



Dan and Greg Martino tend to the cages at Cottage City Oysters

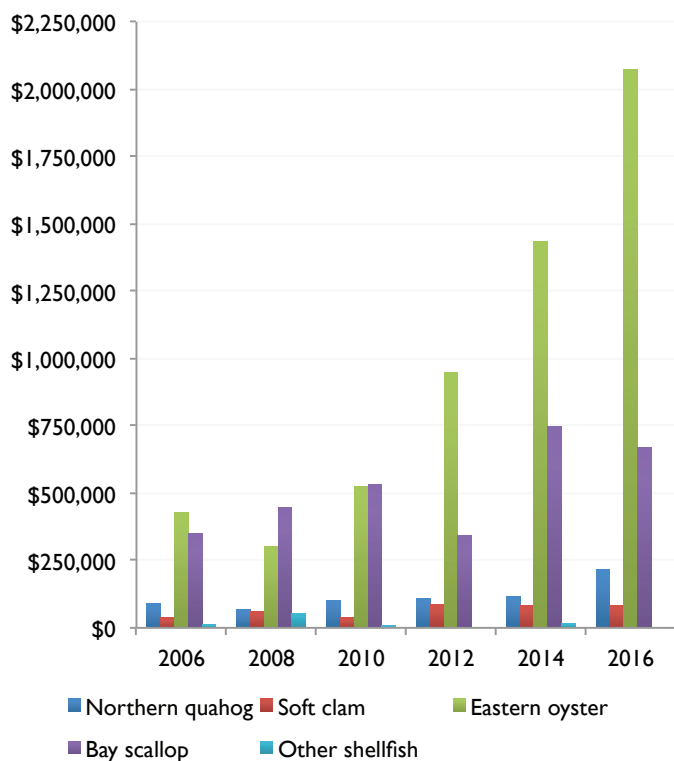
Value of shellfish landings in Dukes County, 2006–2016

Source: Standard Atlantic Fisheries Information System (SAFIS) Dealer Database; provided by the Division of Marine Fisheries

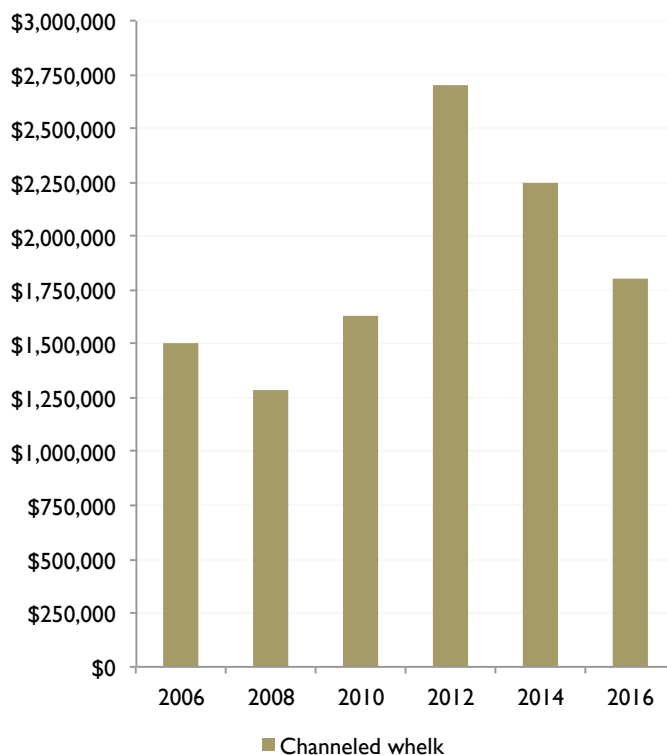
	2006	2008	2010	2012	2014	2016
Northern quahog	\$89,354	\$68,786	\$102,340	\$108,784	\$117,217	\$215,775
Soft clam	\$37,581	\$62,001	\$37,728	\$87,551	\$84,718	\$83,693
Eastern oyster	\$427,653	\$303,657	\$524,013	\$946,867	\$1,435,420	\$2,071,197
Bay scallop	\$350,151	\$447,265	\$533,646	\$341,266	\$747,618	\$667,977
Other shellfish	\$12,526	\$54,712	\$3,194	*	\$15,013	*
Channeled whelk (marine gastropods)	\$1,508,000	\$1,288,337	\$1,633,004	\$2,705,837	\$2,250,139	\$1,803,801

* Withheld.

Shellfish Value (Minus Whelk)



Channeled Whelk Value



Nonprofits

Revenue and assets: Island, 2014–2016*

Source: IRS Form 990s

The economic figures for Dukes County in general may not adequately reflect the influence of the Island's large nonprofit sector, which collectively raised at least \$208 million in 2016 and held more than \$433 million in assets—equivalent to about a third of the gross regional product in 2017.

Revenue

	2016	2015	2014
Arts	\$10,236,687	\$6,352,966	\$5,117,614
Civic	\$16,821,683	\$16,193,650	\$14,605,934
Education	\$8,016,709	\$6,565,709	\$5,022,536
Environment and conservation	\$4,797,190	\$4,469,046	\$5,501,376
Health and human services	\$147,922,818	\$96,768,144	\$88,644,267
Housing	\$5,418,220	\$3,626,913	\$2,837,700
Sports and recreation	\$15,098,064	\$11,056,437	\$12,658,789
Total	\$208,311,371	\$145,032,865	\$134,388,216

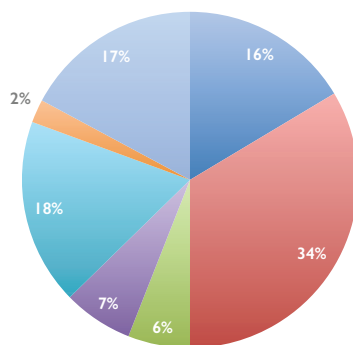
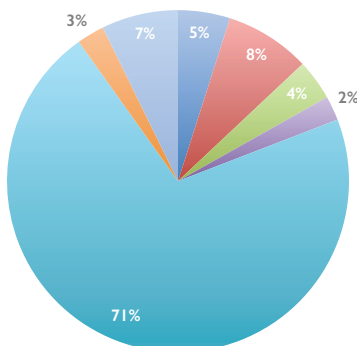
Assets

	2016	2015	2014
Arts	\$12,136,063	\$8,682,569	\$7,754,457
Civic	\$66,827,662	\$63,557,638	\$59,983,232
Education	\$39,026,709	\$36,234,597	\$34,427,193
Environment and conservation	\$81,748,102	\$80,275,559	\$78,749,442
Health and human services	\$151,012,499	\$129,477,057	\$126,574,092
Housing	\$11,270,135	\$7,563,080	\$5,470,911
Sports and recreation	\$71,654,561	\$70,558,125	\$68,545,486
Total	\$433,675,731	\$396,348,625	\$381,504,813

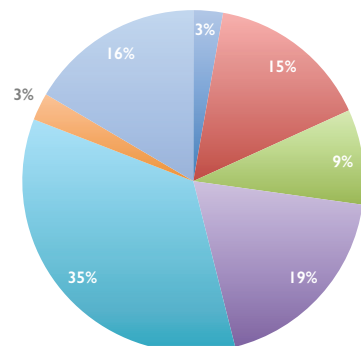
* Includes all 134 Island nonprofits that publicly filed IRS Forms 990 in the given years, or provided them to the MVC. Excludes religious groups, which are not required to file a 990; groups that have become donor-advised funds in the portfolio of other nonprofits; and groups that primarily serve Cape Cod.

134 Nonprofits with FY2016 Form 990s Available (of About 198 in Total)

Revenue FY2016: \$208.3 Million



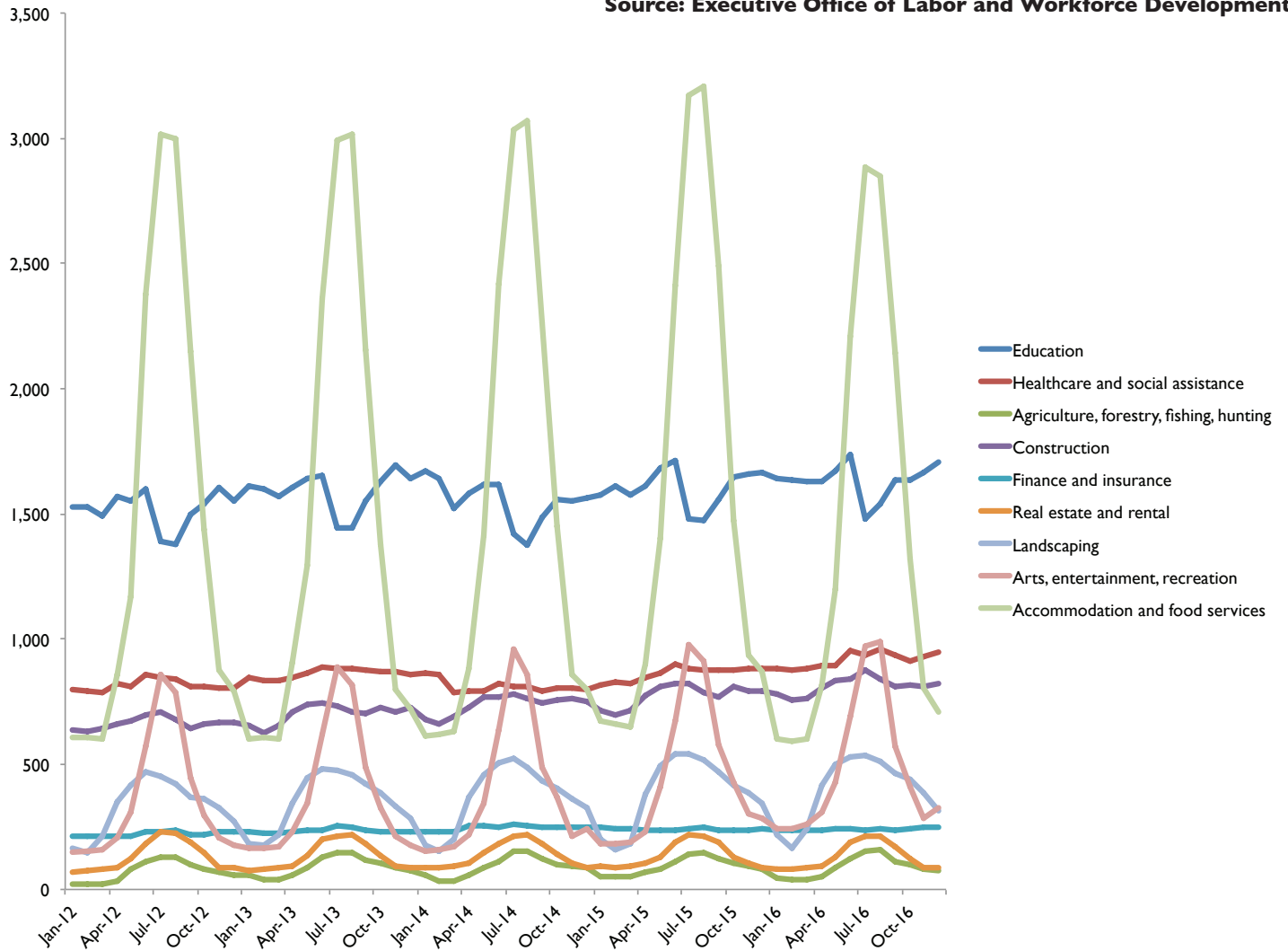
Net Assets FY2016: \$433.7 Million



- Arts
- Civic
- Education
- Environment/conservation
- Health and human services
- Housing
- Sports and recreation

Selected industries: Seasonality (employment) in Dukes County, 2012–2016

Source: Executive Office of Labor and Workforce Development



Average annual employment (all NAICS sectors): Dukes County, 2017

Source: Executive Office of Labor and Workforce Development

