

Martha's Vineyard Statistical Profile

February 2019



www.mvcommission.org

PO Box 1447, 33 New York Ave, Oak Bluffs, MA 02557

info@mvcommission.org

p-508-693-3453; f-508-693-7894

Transportation

62

Passengers, automobiles and trucks carried to and from Martha's Vineyard, 2007-2017	62
Cars parked at the Woods Hole, Falmouth and Cataumet lots (for Vineyard ferries), 2007–2017	63
Number of excursion vehicles by month and year: Martha's Vineyard, 2007–2017	64
Other licensed ferries: Monthly passengers, 2007–2017	65
Total ferry passengers (SSA and non-SSA), 2007–2017	66
Enplanements by airline, 2017	66
Annual passenger enplanements, 2010–2017	66
Airport operations, 1997-2017	67
Registered vehicles by town and type, 1990–2015	67
Vehicles per capita (towns), 1990–2015	68
Vehicle crashes: County, 1990–2016	69
Average crashes by town, 1990–2016	69
Official road centerline mileage: All roads, 2017	69
Miles of VTA bus routes per town	69
Miles of shared-use paths per town, 2018	69
Vineyard Transit Authority ridership by month and year, 2007–2017	70

TRANSPORTATION

Ferry travel: The number of vehicles traveling to and from the Vineyard has increased by 15 percent in the last decade. The number of trucks increased at more than 4 times the rate of automobiles (39% versus 8.9%), due partly to a reclassification of some vehicles in 2009. Passenger traffic also increased by 15 percent.

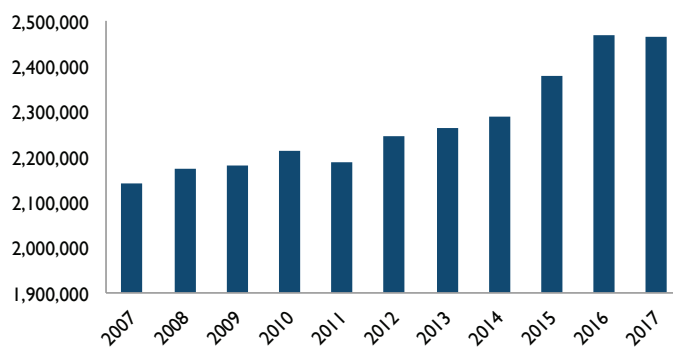
Passengers, automobiles and trucks carried to and from Martha's Vineyard, 2007-2017

Source: Martha's Vineyard Steamship Authority monthly business reports

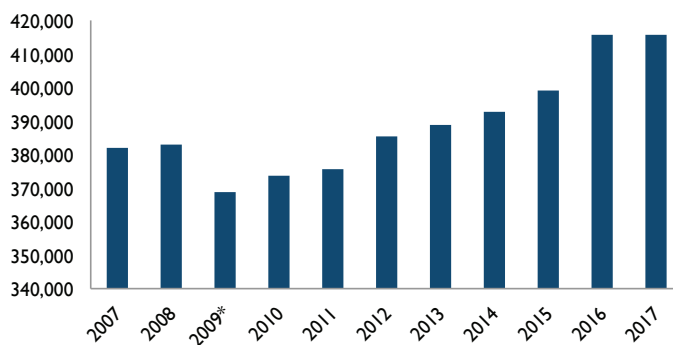
	2007	2009	2011	2013	2015	2017
Passengers	2,143,160	2,179,567	2,189,530	2,263,708	2,378,303	2,466,548
Automobiles	381,930	368,704	375,615	388,864	399,277	415,753
Trucks	98,257	115,600	114,782	118,922	125,078	136,706
Total vehicles	480,187	484,304	490,397	507,786	524,355	552,459



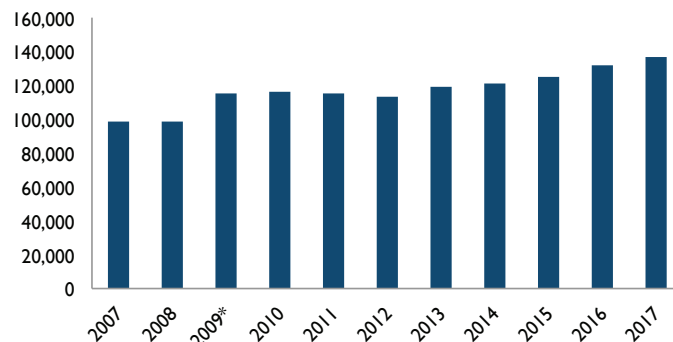
Passengers



Automobiles



Trucks



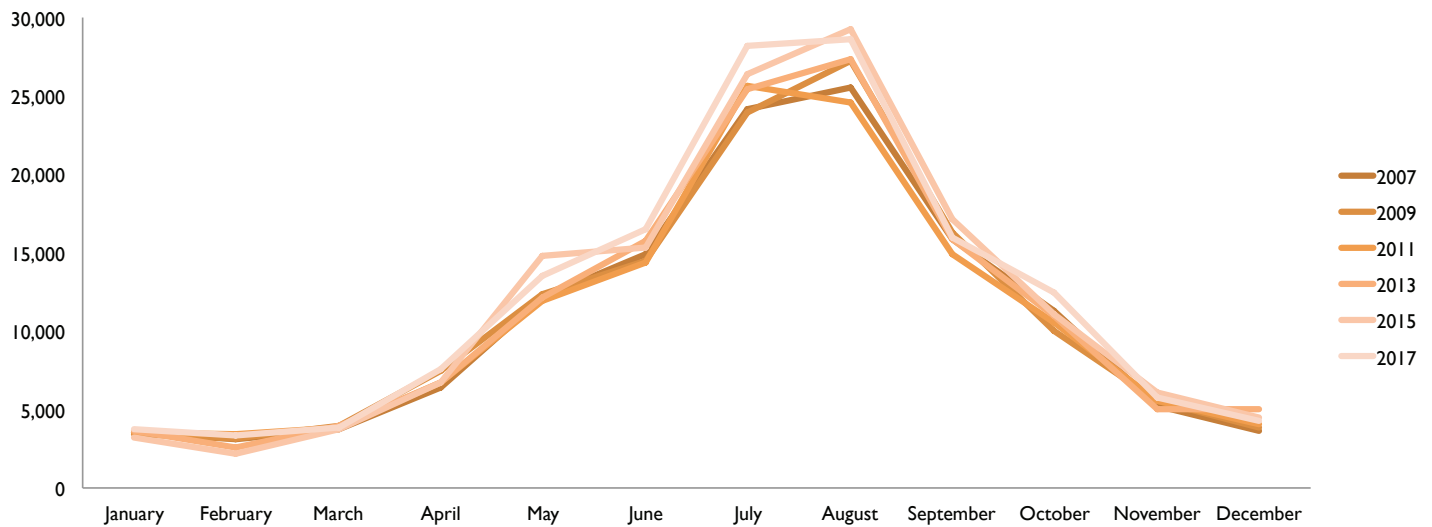
*In 2009, the SSA no longer classified any non-commercial trucks of any length as automobiles. - SSA

Cars parked at the Woods Hole, Falmouth and Cataumet lots (for Vineyard ferries), 2007–2017

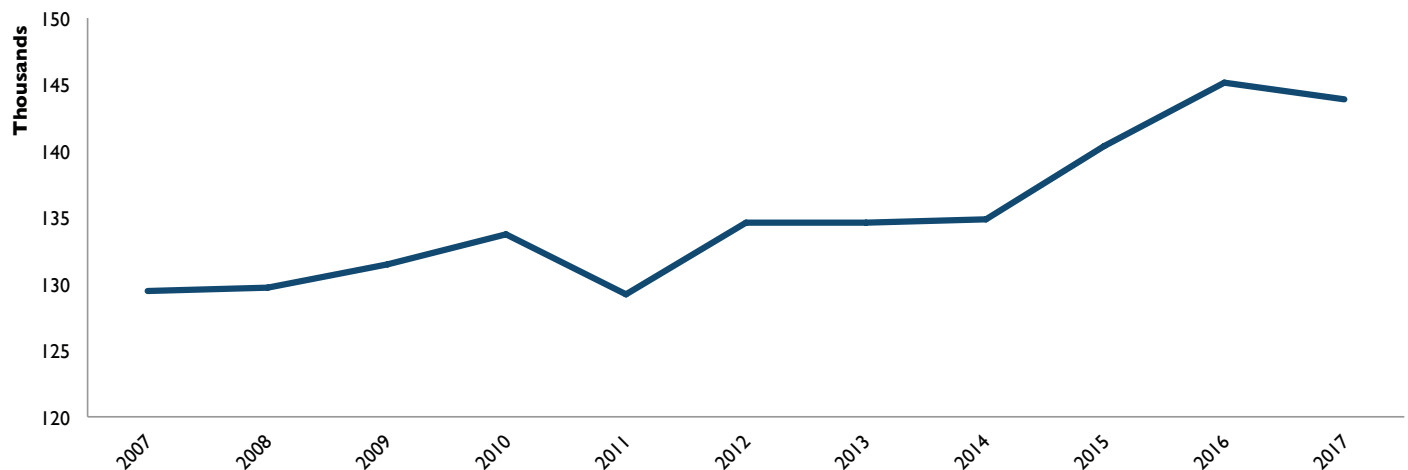
Source: Martha's Vineyard Steamship Authority monthly business reports

The number of vehicles parked at the Woods Hole, Falmouth and Cataumet lots, which serve Vineyard travelers, grew by 11 percent, mostly in the peak months of July and August, but with notable growth in the shoulder seasons as well.

	2007	2009	2011	2013	2015	2017
January	3,516	3,390	3,525	3,668	3,230	3,760
February	3,081	3,156	3,392	2,548	2,182	3,348
March	3,736	3,908	3,896	3,919	3,701	3,891
April	6,409	7,436	6,723	6,671	6,724	7,613
May	12,163	12,340	11,945	12,183	14,843	13,524
June	14,865	14,490	14,417	15,770	15,373	16,552
July	24,135	23,914	25,592	25,482	26,389	28,191
August	25,542	27,206	24,611	27,320	29,261	28,567
September	15,846	16,256	14,877	15,911	17,099	15,932
October	11,297	10,026	10,586	10,988	11,077	12,515
November	5,269	5,570	5,552	5,054	6,059	5,729
December	3,627	3,811	4,034	5,064	4,466	4,310



Total Cars Parked



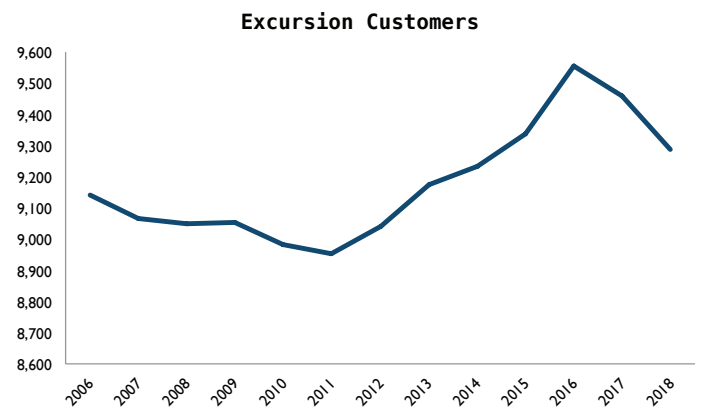
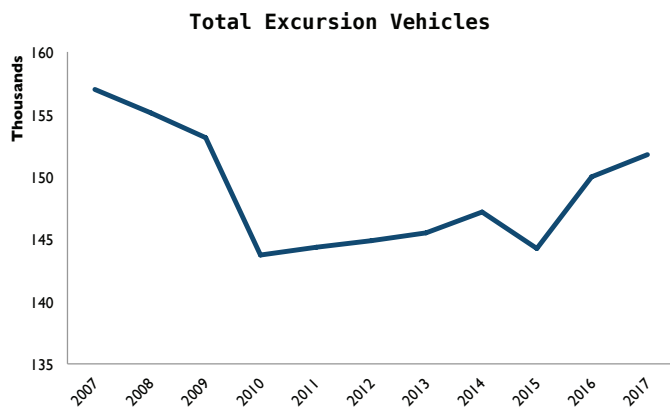
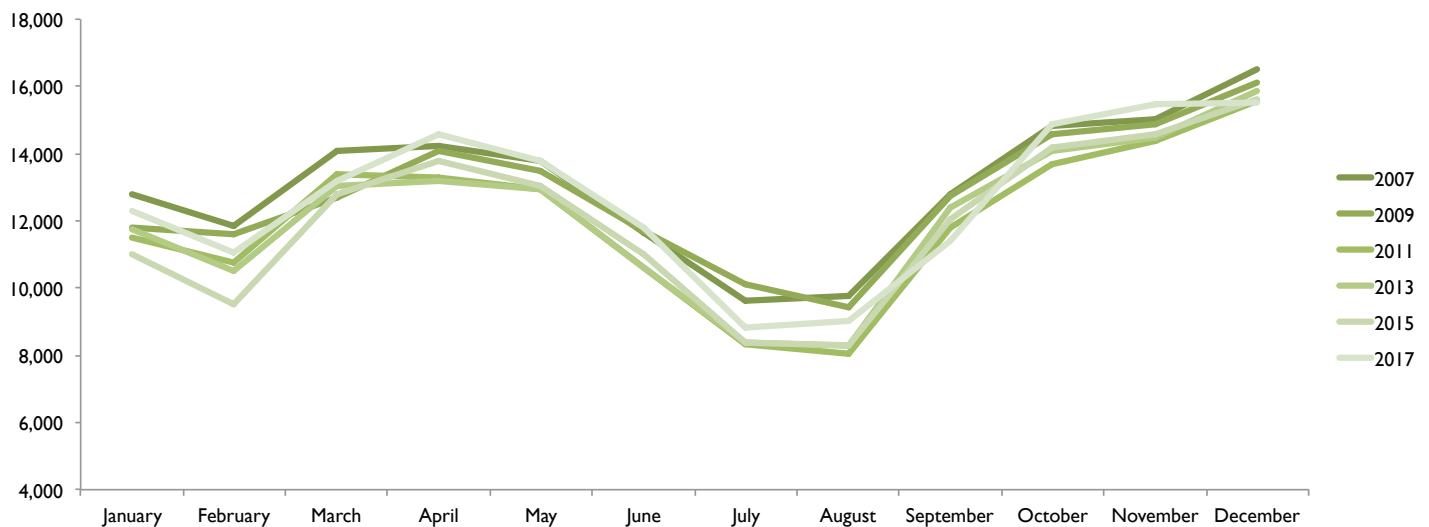
Number of excursion vehicles by month and year: Martha's Vineyard, 2007–2017

Source: Martha's Vineyard Steamship Authority monthly business reports

Excursion fares for vehicles are those purchased by Island residents for a discount. The rides must be round-trip and originate on the Island. The total number of excursion fares drops in summer, perhaps as a result of more residents being occupied with work on the Island, and peak in December. The number of excursion fares has grown 5.7 percent since 2010, but fallen from a peak of 156,972 in 2007. Between 2010 and 2017, the number of excursion fares increased in all seasons except winter, where it declined by 3.4 percent. The largest growth was in the summer.

	2007	2009	2011	2013	2015	2017
January	12,791	11,790	11,512	11,754	10,985	12,304
February	11,848	11,615	10,774	10,487	9,535	11,055
March	14,080	12,673	13,403	13,016	12,815	13,194
April	14,239	14,081	13,295	13,185	13,791	14,594
May	13,787	13,483	12,930	12,928	13,043	13,783
June	11,628	11,706	10,591	10,609	10,998	11,810
July	9,623	10,090	8,319	8,399	8,369	8,815
August	9,777	9,428	8,045	8,285	8,296	9,022
September	12,814	12,767	11,791	12,414	12,028	11,414
October	14,840	14,563	13,693	14,086	14,188	14,861
November	15,026	14,858	14,394	14,455	14,595	15,446
December	16,519	16,103	15,593	15,858	15,627	15,503
Total	156,972 (33%)	153,157 (32%)	144,340 (29%)	145,476 (29%)	144,270 (28%)	151,801 (27%)

Blue = percent of total vehicle fares

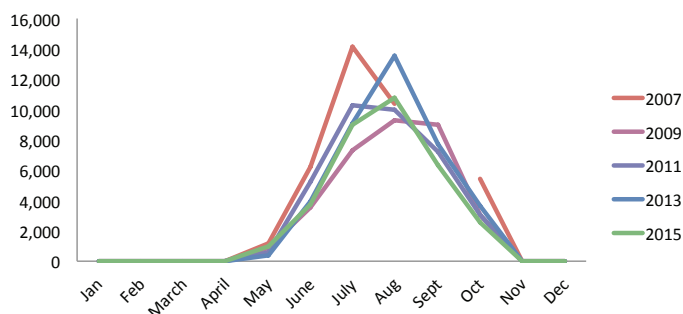


Other licensed ferries: Monthly passengers, 2007–2017

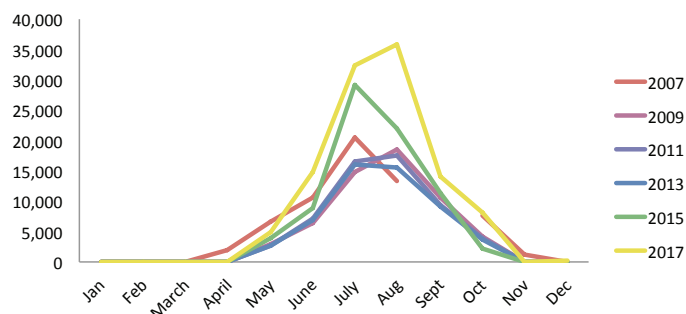
Source: Martha's Vineyard Steamship Authority monthly business reports

In addition to the Steamship Authority, four other licensed ferry companies serve the Vineyard, but only for passengers, and typically not in the winter. Between 2007 and 2017, the Hy-Line high-speed ferry out of Hyannis saw the most growth in ridership (79 percent), followed by the Falmouth Ferry Service (four percent). SeaStreak saw a 35-percent decline in ridership on its New York City ferries between 2011 and 2017, while its New Bedford service declined five percent between 2013 and 2017. Altogether, the four companies accounted for 193,640 passenger trips to the Vineyard in 2017, about seven percent of the total.

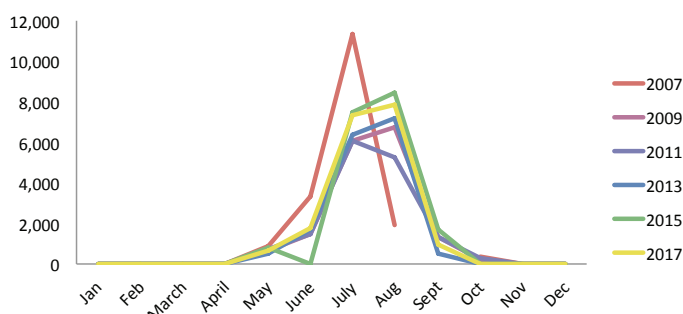
Hi-Line (Regular)¹



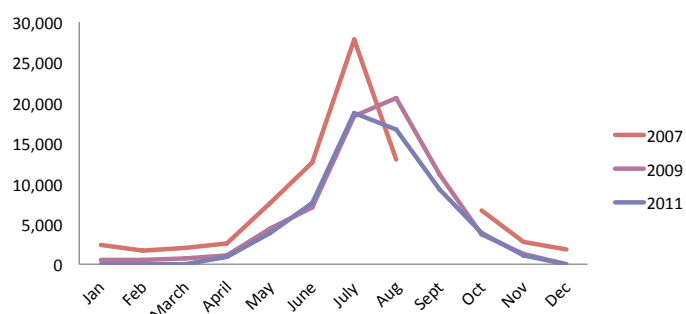
Hi-Line (High-Speed)



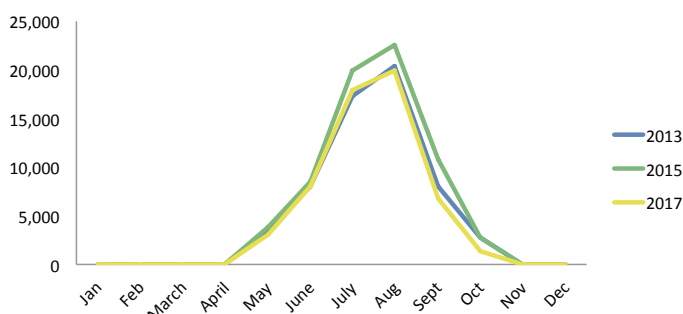
Falmouth Ferry Service



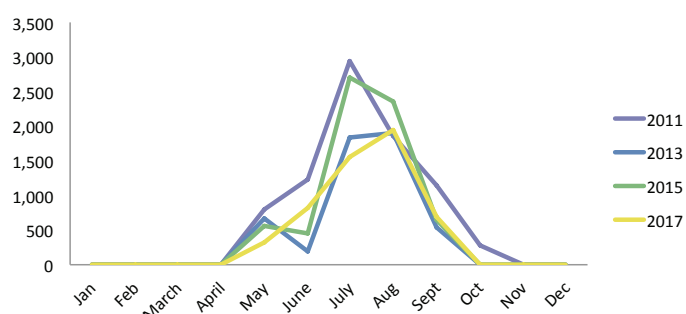
New England Fast Ferry²



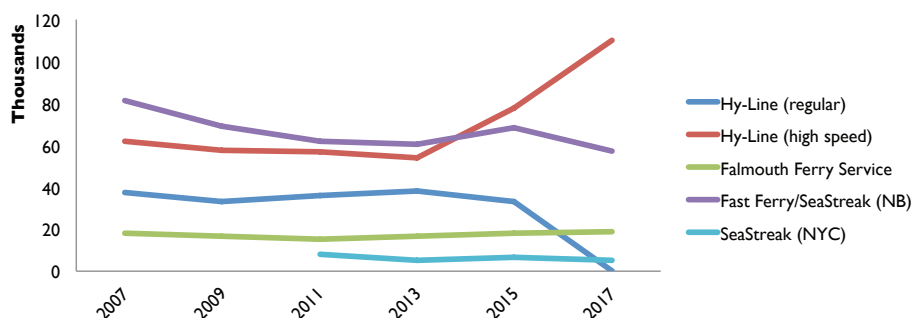
SeaStreak (New Bedford)³



SeaStreak (NYC)⁴



Annual Totals



¹ Stopped running in 2016

² Stopped running in 2011

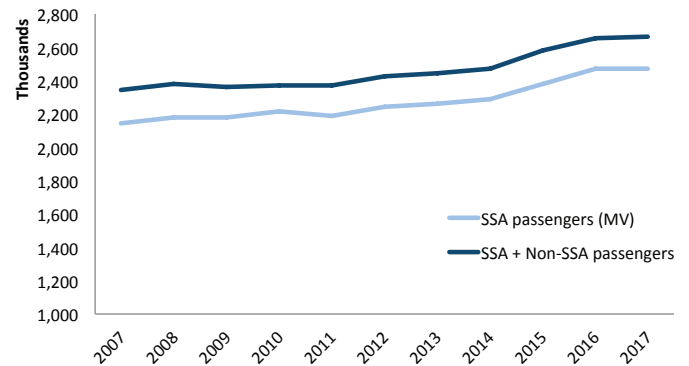
³ Started running in 2012

⁴ Started running in 2010

Total ferry passengers (SSA and non-SSA), 2007–2017

Source: Martha's Vineyard Steamship Authority monthly business reports

	SSA	SSA and non-SSA
2007	2,143,160	2,343,376
2009	2,179,567	2,358,183
2011	2,189,530	2,370,324
2013	2,263,708	2,439,440
2015	2,378,303	2,584,648
2017	2,466,548	2,660,188

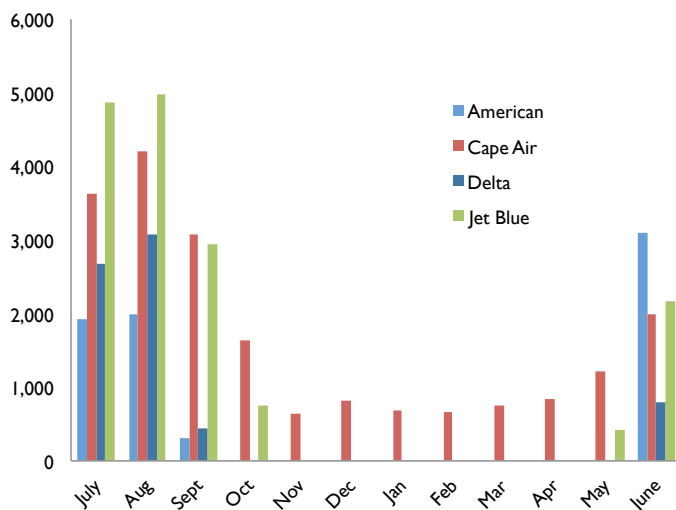


Air travel: As with the Steamship Authority, the Martha's Vineyard Airport sees most of its travel business in the summer, with only Cape Air operating year-round. The total number of passenger boardings (enplanements) grew about 12 percent between 2010 and 2017, with Cape Air handling the largest portion. At the same time, the total number of takeoffs (operations) has declined by 34 percent in the last 20 years, reflecting a similar trend in the national aviation industry.

Enplanements by airline, 2017*

Source: Martha's Vineyard Airport

	American	Cape Air	Delta	Jet Blue	Total
July	1,935	3,638	2,675	4,881	13,129
Aug	1,988	4,210	3,067	4,972	14,237
Sept	300	3,083	441	2,941	6,765
Oct	0	1,630	0	744	2,374
Nov	0	648	0	0	648
Dec	0	821	0	0	821
Jan	0	681	0	0	681
Feb	0	664	0	0	664
Mar	0	757	0	0	757
Apr	0	846	0	0	846
May	0	1,216	0	413	1,629
June	3,089	1,989	798	2,159	8,035
Total	7,312	20,183	6,981	16,110	50,586

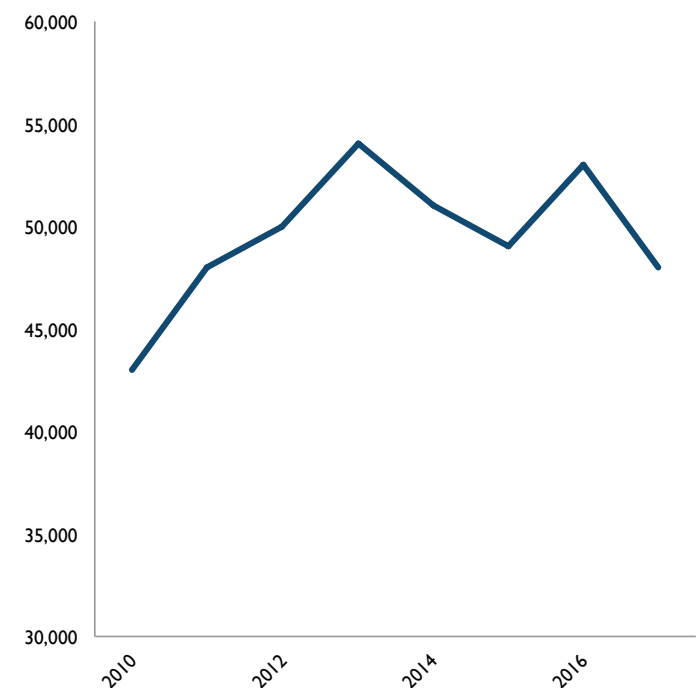


Annual passenger enplanements, 2010–2017*

Source: Martha's Vineyard Airport

2017	48,000
2016	53,000
2015	49,000
2014	51,000
2013	54,000
2012	50,000
2011	48,000
2010	43,000
Total	396,000

* Counted as one-way.



Airport operations, 1997-2017

Source: Federal Aviation Administration, Air Traffic Activity Systems



Land travel: Following a steady rise since 1990 (more by way of light trucks than automobiles), the number of registered vehicles on the Vineyard dropped 15 percent between 2010 and 2015. Each town saw a similar decline in terms of vehicles per capita, excluding minor upticks after 2014 in Oak Bluffs and Tisbury. The figures for Gosnold do not include golf carts, a primary mode of transportation on the island of Cuttyhunk.

Registered vehicles by town and type, 1990-2015

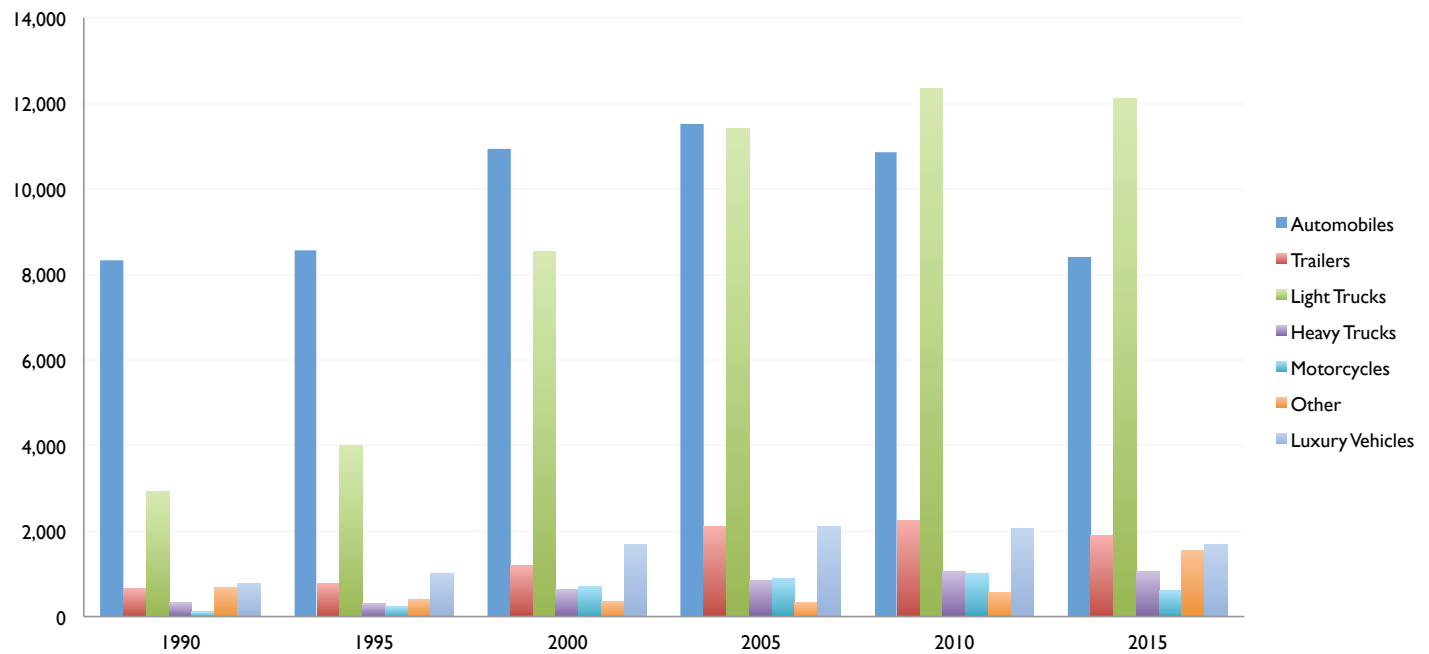
Source: Division of Local Services

	1990	1994	1998	2002	2006	2010	2014	(2015)
Chilmark	1,012	1,083	1,620	1,951	2,017	2,014	1,842	1,648
Edgartown	3,680	3,971	5,699	7,171	7,859	8,231	7,761	7,017
Aquinnah	246	287	444	537	626	653	592	526
Gosnold	75	67	74	58	52	66	65	62
Oak Bluffs	3,239	3,507	4,991	6,417	7,166	7,280	6,730	6,009
Tisbury	3,731	3,691	5,117	6,292	6,711	7,250	6,977	6,229
W.Tisbury	1,785	2,137	2,567	3,864	4,483	4,678	4,036	4,109
Total	13,768	14,743	20,512	26,290	28,914	30,172	28,003	25,600

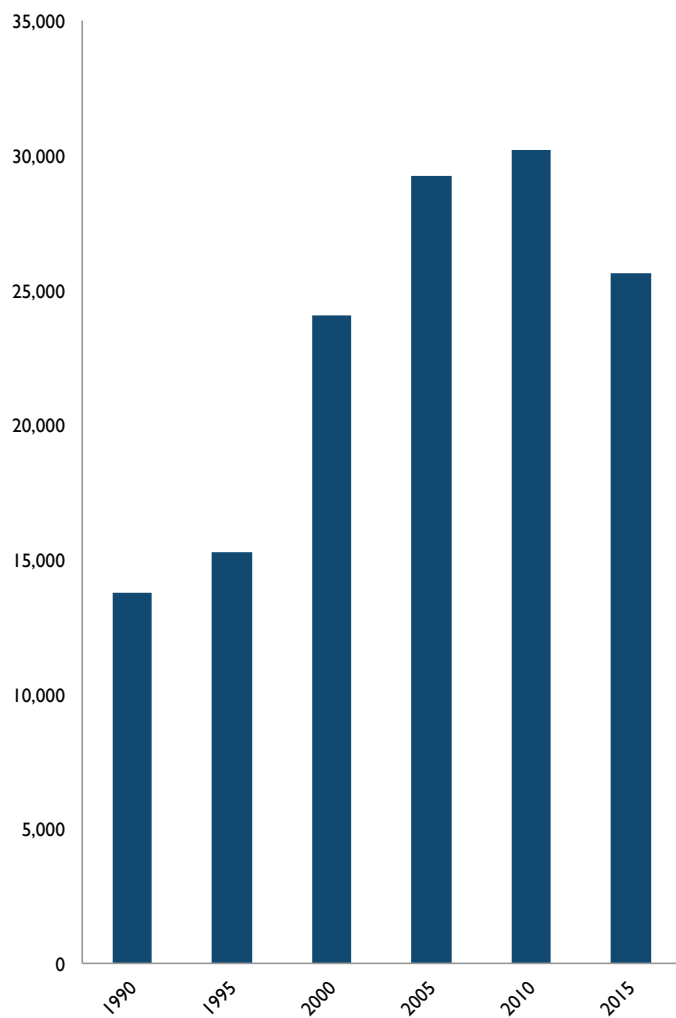
	Automobiles	Trailers	Light trucks	Heavy trucks	Motorcycles	Other	Luxury vehicles	Total vehicles
1990	8,324	654	2,926	322	111	669	762	13,768
1995	8,569	783	3,994	307	239	394	1,000	15,286
2000	10,928	1,196	8,539	632	695	355	1,695	24,040
2005	11,530	2,099	11,423	854	899	324	2,099	29,228
2010	10,868	2,257	12,354	1054	1017	570	2,052	30,172
2015	8,391	1,894	12,103	1059	615	1,538	1,697	25,600

Continued from page 67 . . .

Total Vehicles by Type



Total Vehicles

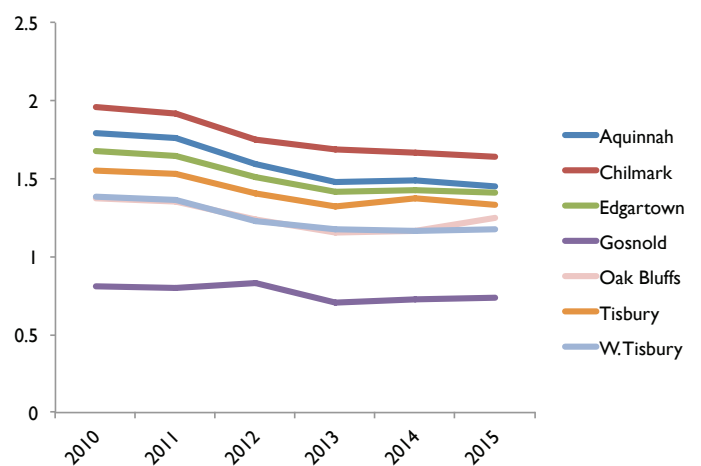


Vehicles per capita (towns), 1990–2015

Source: Division of Local Services, American Community Survey 5-Year Estimates

	2010	2011	2012	2013	2014	2015
Aquinnah	1.79	1.76	1.59	1.48	1.49	1.45
Chilmark	1.96	1.92	1.75	1.69	1.67	1.64
Edgartown	1.68	1.65	1.51	1.42	1.43	1.41
Gosnold	0.81	0.8	0.83	0.7	0.73	0.74
Oak Bluffs	1.37	1.35	1.24	1.15	1.16	1.25
Tisbury	1.55	1.53	1.4	1.32	1.37	1.33
W.Tisbury	1.38	1.36	1.23	1.18	1.16	1.18

Vehicles per capita



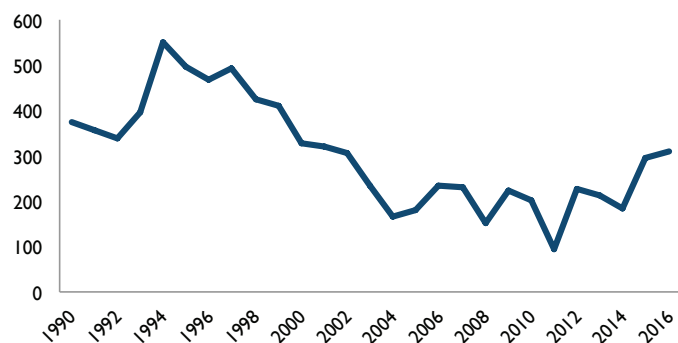
Vehicle crashes: County, 1990–2016

Source: Registry of Motor Vehicles: Accident Records System (1990–2001), Crash Data System (2002–2015)

Vehicle crashes on the Island were about three times more common in 2016 than 2011, but have declined significantly from a high of 552 in 1994. Not surprisingly, most crashes have occurred down-Island, where there are more vehicles, roads and busy intersections. The next official figures from the Registry of Motor Vehicles are expected in 2019.

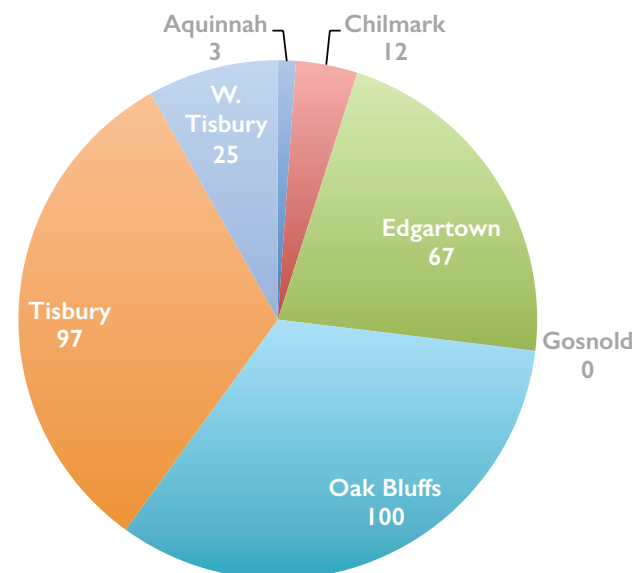
	1990	1995	2000	2005	2010	2015	(2016)	Total
Aq.	6	3	4	6	5	4	1	92
Chil.	15	14	15	10	2	22	21	315
Edg.	78	103	75	27	50	49	65	1,801
Gos.	0	0	0	0	0	0	0	2
O.B.	115	139	161	95	53	85	91	2,712
Tis.	146	211	46	28	52	94	75	2,617
W.Tis.	14	27	25	15	41	42	58	668
Total	374	497	326	181	203	296	311	8,207

Vehicle Crashes, 1990–2016



Average crashes by town, 1990–2016

Source: Registry of Motor Vehicles: Accident Records System (1990–2001), Crash Data System (2002–2015)



Official road centerline mileage: All roads, 2017

Source: MassDOT Road Inventory Report, Year End 2017 and MVC

See map, page 110

MassDOT roads are maintained by the state, and town-accepted roads are maintained by the towns through which they run. “Other” in this case may refer to unaccepted, county or federal roads.

	MassDOT	Town-accepted	Other	Total centerline miles
Chilmark	7.77	14.1		21.88
Edgartown	5.2	45.35	3.6	54.15
Aquinnah	4.12	8.23	1.11	13.45
Gosnold	0	2	0	2
Oak Bluffs	1.68	36.48	6.97	45.13
Tisbury	3.15	21.71	2.23	27.09
W.Tisbury	8.64	13.9	2.91	25.49
Island	30.56	141.77	16.82	189.19

Miles of VTA bus routes per town²

Source: MVC 2018 based on VTA route map. Basemap source is MassDOT Road Inventory

See map, page 110

Aquinnah	6.535
Chilmark	16.552
Edgartown	19.535
Oak Bluffs	17.334
Tisbury	10.356
West Tisbury	16.951
County	87.263

²No double-counting if routes overlap

Miles of shared-use paths by town, 2018

Source: 2018 data based on MassDOT Road Inventory delineation; 2018 GIS data based on town bylaw-written description of delineation

See map, page 111

Chilmark	0
Edgartown	18.836
Aquinnah	0
Gosnold	0
Oak Bluffs	8.338
Tisbury	1.007
West Tisbury	7.467
County	35.647

Vineyard Transit Authority ridership by month and year, 2007–2017

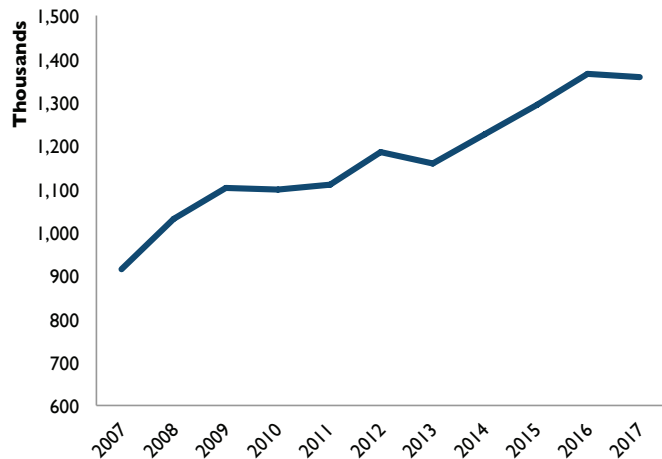
Source: VTA annual reports

Annual VTA ridership has increased at a steadily clip of about five percent per year since 2007, with growth in all seasons. The VTA's year-round paratransit service known as The Lift, which started in the 1980s and serves all six Island towns, logged 15,707 rides in 2017, about a seven-percent increase in five years.

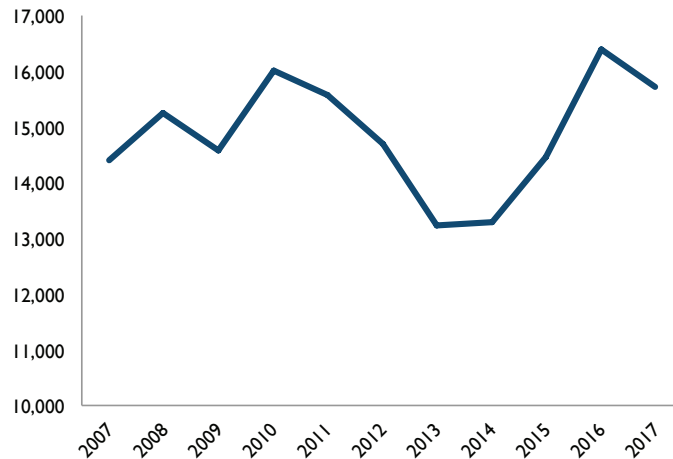
The Lift

	2012	2017
Total rides	14,681	15,707
Medical	22%	32%
Nutrition	5%	1%
Social/recreation	33%	44%
Shopping/other	39%	23%

Total VTA ridership



The Lift Ridership



VTA Ridership (Monthly)

