

## **ATTACHMENT 1: LIST OF ATTACHMENTS**

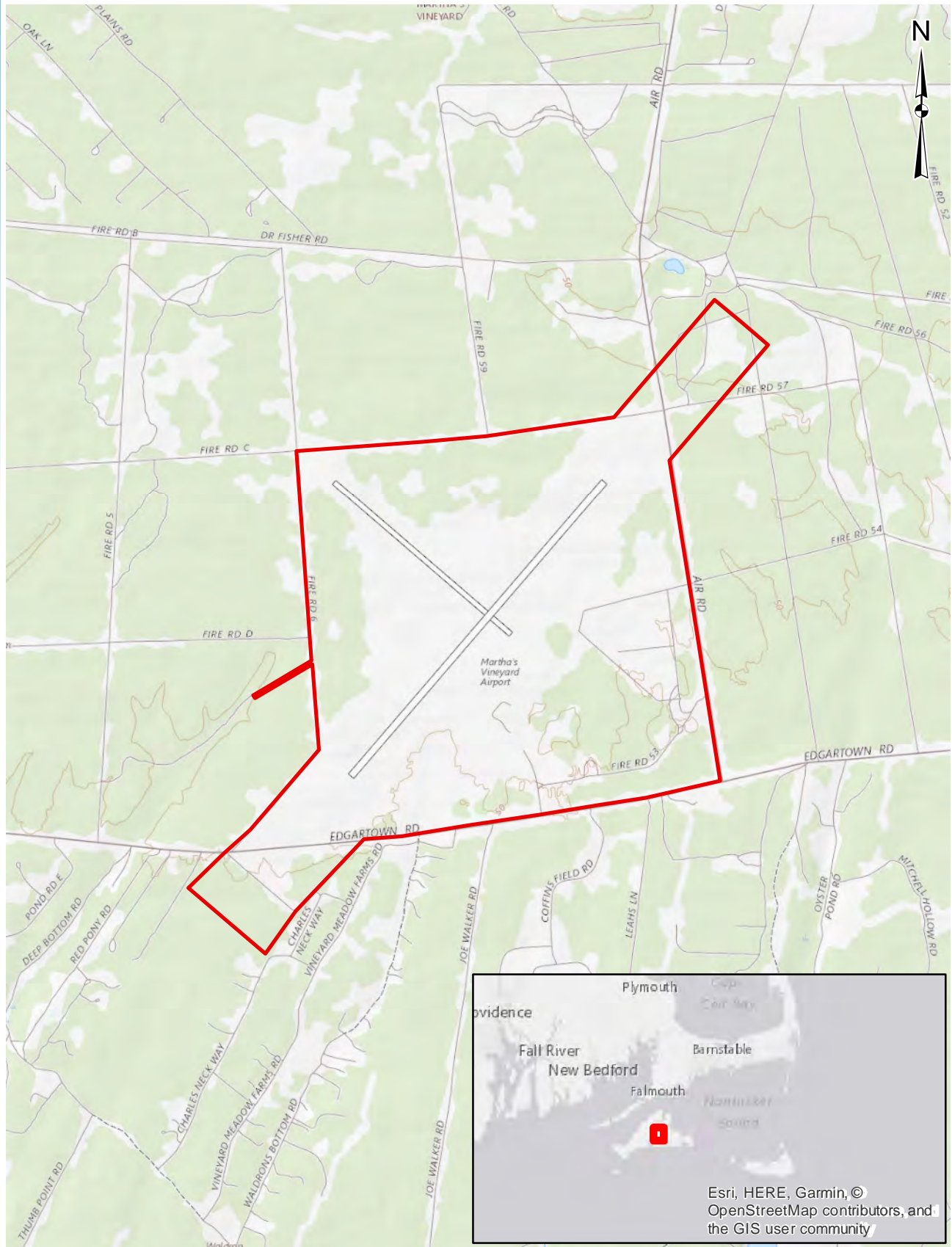
1. List of Attachments (this list)
2. U.S.G.S. Location Map
3. Airport Layout Plan (Existing Conditions)
4. Priority and Estimated Habitat
5. Proposed Conditions Plans
6. ENF Distribution List
7. List of Municipal and Federal Permits

This Page Intentionally Blank

## **ATTACHMENT 2: USGS LOCATION MAP**



Attachment 2: Location Map



This Page Intentionally Blank

**ATTACHMENT 3: AIRPORT LAYOUT PLAN (EXISTING CONDITIONS)**

This Page Intentionally Blank



BUILDING #	NAME	HIGH EIGHT AVAL
35	(OPEN)	N/A
36	TH HUNKLE & SONS	28
37	SEWAGE PUMPING STATION	26
38	REAR/END REAR CONCOURSE	27
39	CARS UNLOADED	27
40	MP ROGERS	26
41	SAV ASSOCIATES	25
42	SAV ASSOCIATES	27
43	SAV ASSOCIATES	25
44	SAV ASSOCIATES	25
45	SAV ASSOCIATES	12
46	SAV ASSOCIATES	12
47	SAV ASSOCIATES	12
48	SAV ASSOCIATES	12
49	SAV ASSOCIATES	12
50	LIBRE ICE	24
51	DONAHAM'S NURSERY AND LANDSCAPE	26
52	FORD COMPANY	24
53	FORD COMPANY	20
54	HEALTHLAND REACTY TRUST	27
55	HEALTHLAND REACTY TRUST	27
56	HEALTHLAND REACTY TRUST	20
57	HEALTHLAND REACTY TRUST	25
58	PROSTATE CENTER BUILD	27
59	VP CONTINENTAL CORP	7
60	VP CONTINENTAL CORP	19
61	AIRPORT FUEL SERVICES	28
62	AIRPORT FUEL SERVICES	28
63	AIRPORT FUEL SERVICES	24
64	ISLAND PODS & SPAS	27
65	WIND TALKERS	27
66	ACCURATE CAB CORP	26
67	(OPEN)	N/A
68	COUNTY SHERIFF ROE COURSE	N/A

BUILDING #	NAME	HIGH EIGHT AVAL
35	(OPEN)	N/A
36	HN HUNKLE & SONS	28
37	SEWAGE PUMPING STATION	26
38	REARDOON REALTY (CONCRETE)	26
39	CARS UNLIMITED	27
40	MP ROGERS	26
41	SAV ASSOCIATES	26
42	SAV ASSOCIATES	27
43	SAV ASSOCIATES	25
44	SAV ASSOCIATES	25
45	SAV ASSOCIATES	12
46	SAV ASSOCIATES	12
47	SAV ASSOCIATES	12
48	SAV ASSOCIATES	12
49	SAV ASSOCIATES	24
50	LIBRE ICE	24
51	DONAHAM'S NURSERY AND LANDSCAPE	26
52	FORD COMPANY	28
53	FORD COMPANY	20
54	HEATHLAND REALTY TRUST	27
55	HEATHLAND REALTY TRUST	27
56	HEATHLAND REALTY TRUST	20
57	HEATHLAND REALTY TRUST	25
58	PROSTATE CENTER FUL	27
59	VP CONTINENTAL CORP	7
60	VP CONTINENTAL CORP	19
61	AIRPORT FUEL SERVICES	28
62	AIRPORT FUEL SERVICES	28
63	AIRPORT FUEL SERVICES	24
64	ISLAND PODS & SPAS	27
65	WIND TALKERS	27
66	ACCURATE CAB CORP	26
67	(OPEN)	N/A
68	COUNTY SHERIFF ROE COURSE	N/A

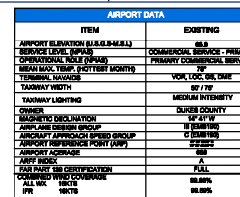
RUNWAY 9-4 DATA	
ITEM	EXISTING
LENGTH	200'
WIDTH	100'
SAFETY AREA/LENGTH	200'/100'
PAVT. STRENGTH (4,000 LBS)	C-1000
PAVEMENT TYPE	ASPHALT
RUNWAY LIGHTING	ROW 5 PSEALS & HPL ROW 50 PSEALS & HPL
RUNWAY MARKING	YES
EFFECTIVE GRADIENT (%)	3%
APPROACH AIDS	ROW 5 PAPP
NAVIGATIONAL AIDS	NAV 5 & ROW NAV 50 & DISCARD
FAR TTY CATEGORY	ROW 5 HPS PRECISION ROW 50 PRECISION
APPROACH SURFACE SLOPE	ROW 5 SLOP ROW 50 SLOP
APPROACH SURFACE	ROW 5 SLOP ROW 50 SLOP

AIRPORT DATA	
ITEM	EXISTING
AIRPORT ELEVATION (ASL/MSL)	65.9
SERVICE LEVEL TERPAS	COMMERCIAL SERVICE - PAV
PAVEMENT TYPE	PERMANENT CONCRETE SURF
MEAN MAX TEMP. (HOTTEST MONTH)	79°
TERMINAL, NAVIGATOR	VOR, LOC, GDS ONE
TRAFFIC WAY IN	30° / 17°
TRAFFIC LIGHTING	MEDIUM INTENSITY
CROSSING	BLUES COUNTY
MAGNETIC DECLINATION	10°-21' W
AIRPORT DESIGN GROUP	II (TERMINAL)
APPROACH LIGHTS	0 TO 1000 FT
APPROACH REFERENCE POINT (ARP)	250000
AIRPORT ACQUISITION	A
FAIR PLAY - 50% CERTIFICATION	FULL
COMMERCIAL TRIP COVERAGE	100.0%
ALL RISK	100.0%
TPR	100.0%

AIRPORT DATA	
ITEM	EXISTING
AIRPORT ELEVATION (ASL/MSL)	65.9
SERVICE LEVEL TERPAS	COMMERCIAL SERVICE - PAV
PAVEMENT TYPE	PERMANENT CONCRETE SURF
MEAN MAX TEMP. (HOTTEST MONTH)	79°
TERMINAL, NAVIGATOR	VOR, LOC, GDS ONE
TRAFFIC WAY IN	30° / 17°
TRAFFIC LIGHTING	MEDIUM INTENSITY
CROSSING	BLUES COUNTY
MAGNETIC DECLINATION	10°-21' W
AIRPORT DESIGN GROUP	II (TERMINAL)
APPROACH LIGHTS	0 TO 1000 FT
APPROACH REFERENCE POINT (ARP)	250000
AIRPORT ACQUISITION	A
FAIR PLAY - 50% CERTIFICATION	FULL
COMMERCIAL TRIP COVERAGE	100.0%
ALL RISK	100.0%
TPR	100.0%

AIRPORT DATA	
ITEM	EXISTING
AIRPORT ELEVATION (ASL/MSL)	65.9
SERVICE LEVEL TERPAS	COMMERCIAL SERVICE - PAV
PAVEMENT TYPE	PERMANENT CONCRETE SURF
MEAN MAX TEMP. (HOTTEST MONTH)	79°
TERMINAL, NAVIGATOR	VOR, LOC, GDS ONE
TRAFFIC WAY IN	30° / 17°
TRAFFIC LIGHTING	MEDIUM INTENSITY
CROSSING	BLUES COUNTY
MAGNETIC DECLINATION	10°-21' W
AIRPORT DESIGN GROUP	II (TERMINAL)
APPROACH LIGHTS	0 TO 1000 FT
APPROACH REFERENCE POINT (ARP)	250000
AIRPORT ACQUISITION	A
FAIR PLAY - 50% CERTIFICATION	FULL
COMMERCIAL TRIP COVERAGE	100.0%
ALL RISK	100.0%
TPR	100.0%

AIRPORT DATA	
ITEM	EXISTING
AIRPORT ELEVATION (ASL/MSL)	65.9
SERVICE LEVEL TERPAS	COMMERCIAL SERVICE - PAV
PAVEMENT TYPE	PERMANENT CONCRETE SURF
MEAN MAX TEMP. (HOTTEST MONTH)	79°
TERMINAL, NAVIGATOR	VOR, LOC, GDS ONE
TRAFFIC WAY IN	30° / 17°
TRAFFIC LIGHTING	MEDIUM INTENSITY
CROSSING	BLUES COUNTY
MAGNETIC DECLINATION	10°-21' W
AIRPORT DESIGN GROUP	II (TERMINAL)
APPROACH LIGHTS	0 TO 1000 FT
APPROACH REFERENCE POINT (ARP)	250000
AIRPORT ACQUISITION	A
FAIR PLAY - 50% CERTIFICATION	FULL
COMMERCIAL TRIP COVERAGE	100.0%
ALL RISK	100.0%
TPR	100.0%



AIRPORT DATA	
ITEM	EXISTING
AIRPORT ELEVATION (ASL/MSL)	65.9
SERVICE LEVEL TERPAS	COMMERCIAL SERVICE - PAV
PAVEMENT TYPE	PERMANENT CONCRETE SURF
MEAN MAX TEMP. (HOTTEST MONTH)	79°
TERMINAL, NAVIGATOR	VOR, LOC, GDS ONE
TRAFFIC WAY IN	30° / 17°
TRAFFIC LIGHTING	MEDIUM INTENSITY
CROSSING	BLUES COUNTY
MAGNETIC DECLINATION	10°-21' W
AIRPORT DESIGN GROUP	II (TERMINAL)
APPROACH LIGHTS	0 TO 1000 FT
APPROACH REFERENCE POINT (ARP)	250000
AIRPORT ACQUISITION	A
FAIR PLAY - 50% CERTIFICATION	FULL
COMMERCIAL TRIP COVERAGE	100.0%
ALL RISK	100.0%
TPR	100.0%

## **ATTACHMENT 4: PRIORITY AND ESTIMATED HABITAT**





Attachment 4: Priority and Estimated Habitat





**ATTACHMENT 6: ENF DISTRIBUTION LIST**



## **Martha's Vineyard Airport**

### **Capital Improvement Plan Projects**

#### **ENF Distribution List**

Jennifer Rand  
Town Administrator  
Town of West Tisbury  
1059 State Road, P.O. Box 278  
West Tisbury, MA 02575

Jennifer Rand  
West Tisbury Highway Department  
1060 State Road, P.O. Box 278  
West Tisbury, MA 02575

Cynthia Mitchell, Chair  
West Tisbury Board of Selectmen  
1059 State Road, P.O. Box 278, West Tisbury, MA 02575

Virginia Jones, Chair  
West Tisbury Planning Board  
1059 State Road, P.O. Box 278, West Tisbury, MA 02575

Joseph K Tierney Jr.  
Inspector of Buildings/Zoning Inspector  
West Tisbury Building Department  
1059 State Road, P.O. Box 278, West Tisbury, MA 02575

Tara Whiting, Chair  
West Tisbury Conservation Commission  
1059 State Road, P.O. Box 278, West Tisbury, MA 02575

Omar Johnson, Health Agent  
West Tisbury Board of Health  
PO Box 278, West Tisbury, MA 02575

West Tisbury Public Library  
1042 State Road, Vineyard Haven, MA 02568

Margaret E Serpa, Chair  
Edgartown Selectmen's Office  
70 Main St, Edgartown MA 02539

Wanda Williams, Town Clerk  
Edgartown Clerk's Office  
70 Main St, Edgartown MA 02539

Sam Sherman, Chair  
Edgartown Planning Board  
70 Main St, Edgartown MA 02539

Leonard Jason  
Building/Zoning Inspector  
Edgartown Building Department  
PO Box 5158, Edgartown, MA 02539

Edward Vincent, Chair  
Edgartown Conservation Commission  
PO Box 5130, Edgartown, MA 02539

Matt Poole, Health Agent  
Edgartown Board of Health  
PO Box 1596, Edgartown, MA 02539

Edgartown Public Library  
26 West Tisbury Road, Edgartown, MA 02539

Bob Rosenbaum, Chair  
Martha's Vineyard Airport Commission  
71 Airport Rd, West Tisbury, MA 02575

Mike Mauro  
Transportation Program Manager  
Martha's Vineyard Commission  
P.O. Box 1447, Oak Bluffs, MA 02557

Adam Turner  
Executive Director  
Martha's Vineyard Commission  
P.O. Box 1447, Oak Bluffs, MA 02557

Cheryl Andrews-Maltais  
Tribal Council Chairwoman  
Wampanoag Tribe of Gay Head  
20 Black Brook Road, Aquinnah, MA 02535



Millie Garcia-Serrano  
Regional Director  
Massachusetts Dept. of Environmental Protection-Southeast Office  
20 Riverside Drive, Lakeville, MA 02347

Jeffrey DeCarlo  
Aeronautics Administrator  
Massachusetts Dept. of Transportation-Aeronautics Division  
Logan Office Center, 1 Harborside Drive, Suite 205N, Boston, MA 02128

Nate Rawding  
Environmental Analyst III  
Massachusetts Dept. of Transportation-Aeronautics Division  
Logan Office Center, 1 Harborside Drive, Suite 205N, Boston, MA 02128

Stephen McKenna  
Regional Coordinator  
Massachusetts Coastal Zone Management-Cape Cod and Islands  
3195 Main Street, P.O. Box 220, Barnstable, MA 02630

Amy Hoenig  
Endangered Species Review Biologist  
Massachusetts Natural Heritage and Endangered Species Program  
1 Rabbit Hill Road, Westborough, MA 01581

Massachusetts Dept. of Conservation and Recreation  
Main Office  
251 Causeway Street, 9th Floor, Boston, MA 02114

Kerry Allard  
Permitting Coordinator  
Massachusetts Division of Marine Fisheries-Martha's Vineyard Office  
57 Shirley Street, Oak Bluffs, MA 02557

Ron O'Connor, Director  
Massachusetts Dept. of Public Health  
Office of Local and Regional Health  
250 Washington Street, Boston, MA 02108

Judith Judson, Commissioner  
Massachusetts Department of Energy Resources  
100 Cambridge St., Suite 900, Boston, MA 02114

William Francis Galvin, Chair  
Massachusetts Historical Commission  
220 Morrissey Boulevard, Boston, MA 02125-3314

Richard Doucette, Environmental Program Manager  
Federal Aviation Administration-New England Regional Office  
1200 District Avenue, Burlington, MA 01803

Michelle Ricci, Planner  
Federal Aviation Administration-New England Regional Office  
1200 District Avenue, Burlington, MA 01803

U.S. Environmental Protection Agency  
Region 1  
5 Post Office Square - Suite 100, Boston, MA 02109-3912

**ATTACHMENT 7: LIST OF MUNICIPAL AND FEDERAL PERMITS**



## **Martha's Vineyard Airport**

### **Capital Improvement Plan Projects**

#### **List of Municipal and Federal Permits**

- National Environmental Policy Act – Environmental Assessment
- NPDES Construction Permit – Notice of Intent and Stormwater Pollution Prevention Plan  
(May not be needed since all precipitation that lands on site infiltrates into the ground)
- NPDES Multi-Sector General Permit – including update of the airport's existing Stormwater Pollution Prevention Plan, Spill Prevention Control and Counter-measure Plan, and Installation Spill Contingency Plan
- Coastal Zone Management – Consistency Finding
- Martha's Vineyard Commission – Development of Regional Impact review
- West Tisbury Building Permit
- Edgartown Building Permit
- Local sewer and water connection permits